

F.A.P. RTE.	SECTION	COUNTY	TOTAL SHEETS	SHEET NO.
574	12BR-1	FULTON	62	1
FED. ROAD DIST. NO.	ILLINOIS	CONTRACT NO. 68732		

INDEX OF SHEETS

1	COVER SHEET
2	GENERAL NOTES, COMMITMENTS & MIX REQUIREMENTS
3-9	SUMMARY OF QUANTITIES
10-12	TYPICAL SECTIONS
13-14	SCHEDULE OF QUANTITIES
15	ALIGNMENT, TIES & BENCHMARKS
16-17	PLAN & PROFILE
18-20	STAGE CONSTRUCTION TRAFFIC DETAILS
21	EROSION CONTROL PLAN
22	ENTRANCE AND BUTT JOINT DETAILS
23	GRADING PLAN
24-42	STRUCTURE PLANS
43-52	DISTRICT 4 CADD STANDARDS
53-62	CROSS SECTIONS
	ILLINOIS DOT HIGHWAY STANDARDS

STATE OF ILLINOIS  
DEPARTMENT OF TRANSPORTATION  
DIVISION OF HIGHWAYS  
**PROPOSED  
HIGHWAY PLANS**

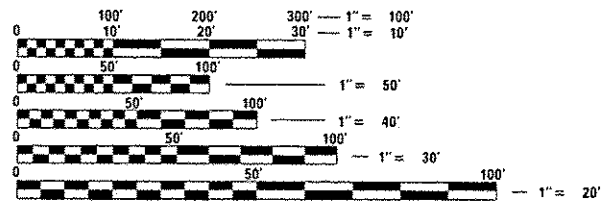
FAP 574 (IL ROUTE 41)  
SECTION 12BR-1  
PROJECT ACF-0574(132)  
FULTON COUNTY  
C-94-095-07

LIST OF ILLINOIS DOT HIGHWAY STANDARDS

000001-06	701006-03
001001-02	701011-02
280001-06	701201-04
420401-08	701301-04
482001-02	701306-03
515001-03	701311-03
542401-01	701321-12
630001-10	701326-04
630301-05	701901-02
631031-10	704001-07
635006-03	780001-03
636011-02	781001-03
701001-02	

LIST OF DISTRICT 4 CADD STANDARDS

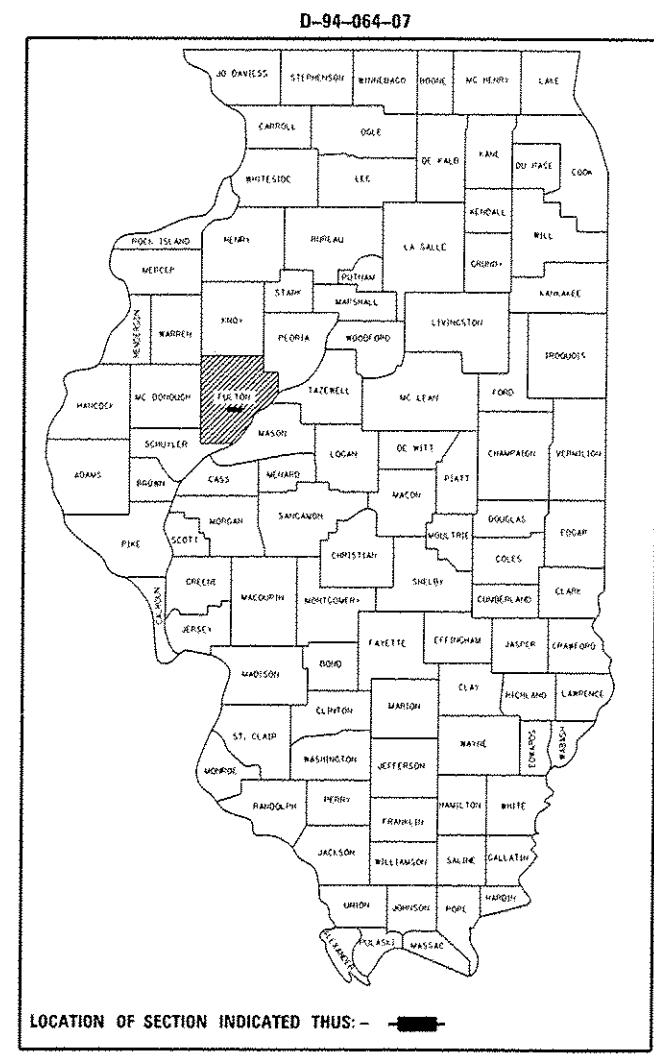
205001-D4
280001-D4
630101-D4
635101-D4
667101-D4
780001-D4



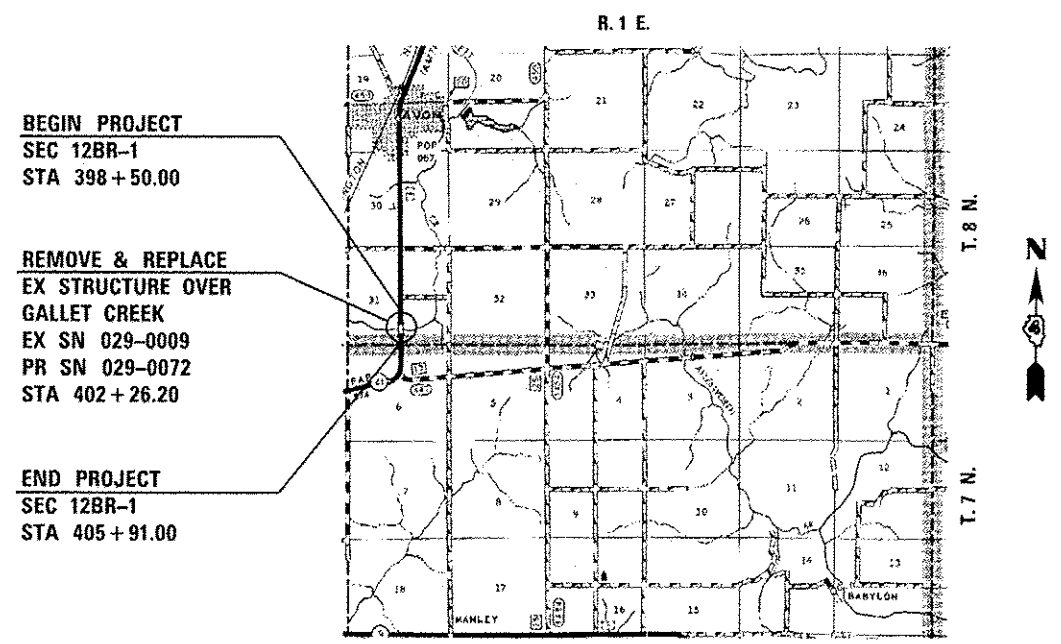
FULL SIZE PLANS HAVE BEEN PREPARED USING STANDARD ENGINEERING SCALES. REDUCED SIZED PLANS WILL NOT CONFORM TO STANDARD SCALES. IN MAKING MEASUREMENTS ON REDUCED PLANS, THE ABOVE SCALES MAY BE USED.

J.U.L.I.E.  
JOINT UTILITY LOCATION INFORMATION FOR EXCAVATION  
1-800-892-0123  
OR 811

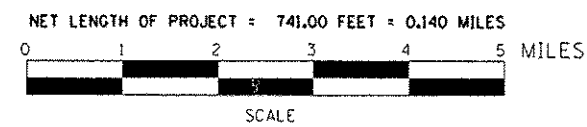
PROJECT ENGINEER: MIKE LEWIS 309-671-3454  
PROJECT MANAGER: MIKE MCLUCKIE 309-671-3468  
CATALOG NO. 033546-00D  
CONTRACT NO. 68732



ADT = 2100 (2009)  
% SU = 5.5 (2009)  
% MU = 5.5 (2009)  
TOWNSHIP: UNION  
FUNCTIONAL CLASSIFICATION: MINOR ARTERIAL (NON-URBAN)



LOCATION PLAN



*Richard K. Allender*  
RICHARD K. ALLENDER  
02-0546  
LICENSED  
PROFESSIONAL  
ENGINEER  
OF  
STATE OF ILLINOIS  
EXPIRATION: 11/30/2013

STATE OF ILLINOIS  
DEPARTMENT OF TRANSPORTATION  
DIVISION OF HIGHWAYS  
SUBMITTED Aug 16 2012  
*Joseph Elwood*  
DEPUTY DIRECTOR OF HIGHWAYS, REGION THREE ENGINEER  
October 5 2012  
*John D. Baranzelli, P.E.*  
acting ENGINEER OF DESIGN AND ENVIRONMENT  
October 5 2012  
*William R. Frey*  
acting DIRECTOR OF HIGHWAYS, CHIEF ENGINEER

PRINTED BY THE AUTHORITY  
OF THE STATE OF ILLINOIS

Allen Henderson & Associates, Inc.  
Civil and Structural Engineers Springfield, IL  
62703 Phone: (217)544-8033 IL Design Firm  
No. 184-001907