

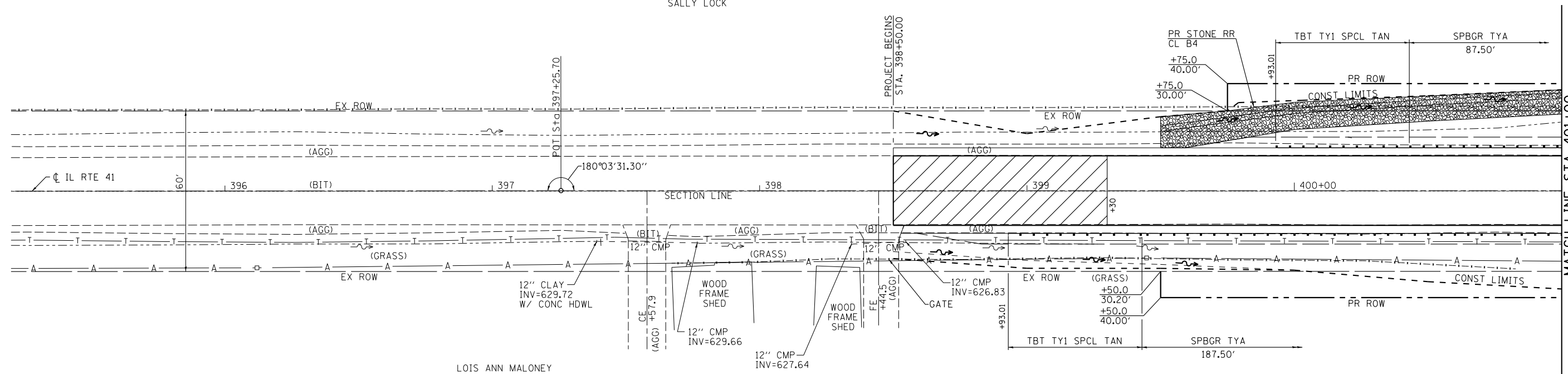
JAMES &  
SALLY LOCK

JAMES &  
SALLY LOCK

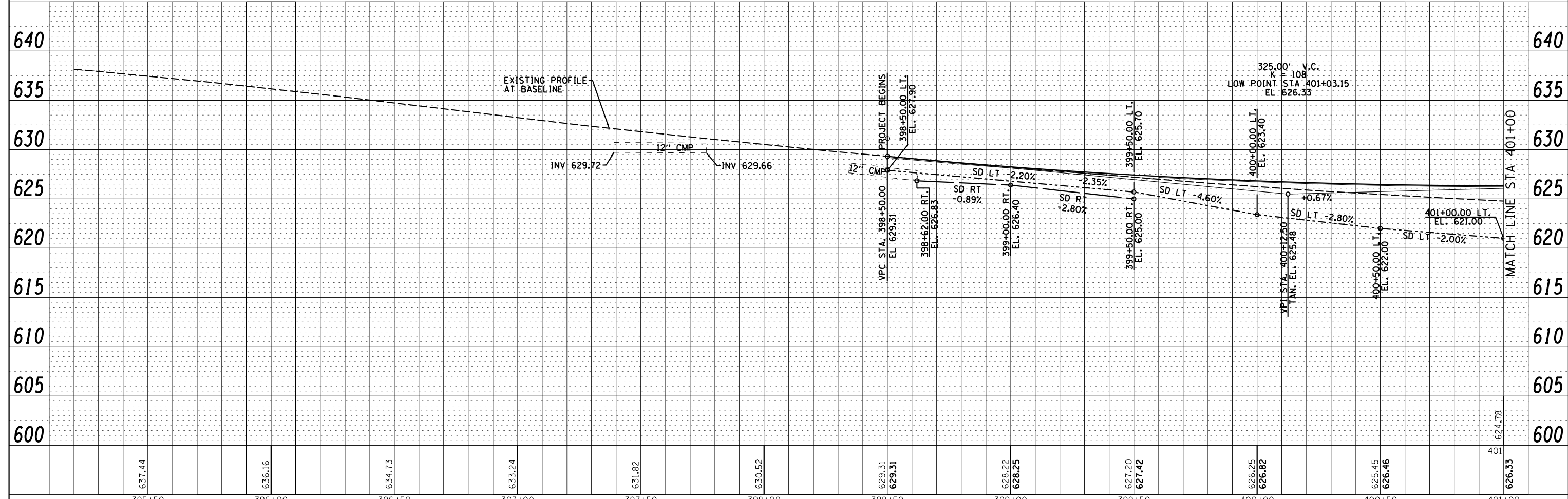
HMA SURF REM-BUTT JOINT

PLAN	SURVEYED	DATE
	PLOTTED	BY
	CHECKED	
	ALIGNED	
	CADD FILE NAME	
	NO.	

PROFILE	SURVEYED	DATE
	PLOTTED	BY
	CHECKED	
	GRADES	
	STRUCTURE	
	NOTATRS	
	CHFD	
	NO.	



NOTE:  
SEE PROPOSED TYPICAL SECTION  
FOR SHOULDER MATERIAL TYPE.



USER NAME = *USER*	DESIGNED -	REVISED -
	CHECKED -	REVISED -
PLOT SCALE = *SCALE*	DRAWN -	REVISED -
PLOT DATE = *DATE*	CHECKED -	REVISED -

**Allen Henderson & Associates, Inc.**  
Civil and Structural Engineers Springfield, IL  
62703 Phone: (217)544-8033 IL Design Firm  
No. 184-001907

<b>PLAN &amp; PROFILE</b>	
SCALE: 1"=20'	SHEET NO. 1 OF 2 SHEETS
STA. 398+50.00 TO STA. 401+00.00	

F.A.P. RTE.	SECTION	COUNTY	TOTAL SHEETS	SHEET NO.
574	12BR-1	FULTON	62	16
CONTRACT NO. 68732				
FED. ROAD DIST. NO. ILLINOIS FED. AID PROJECT				