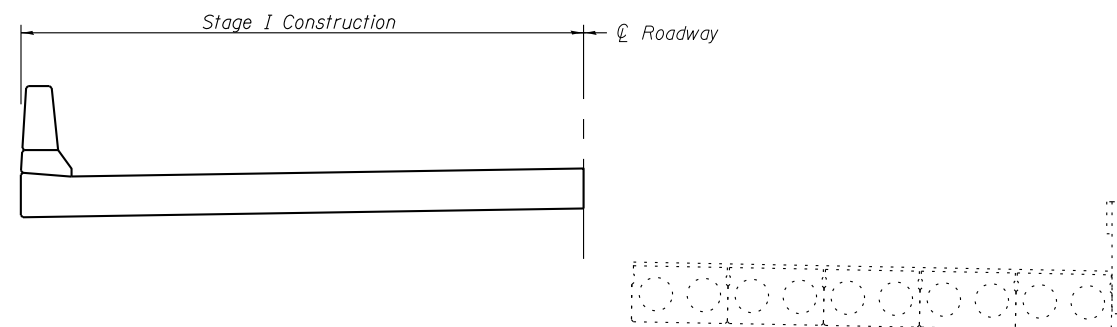
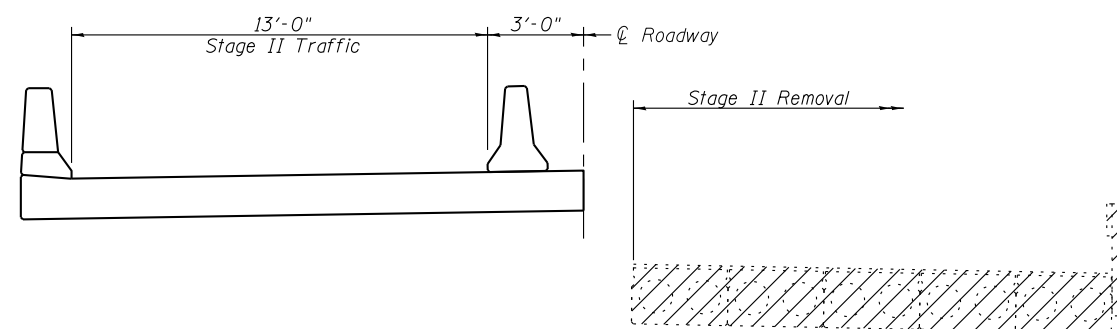


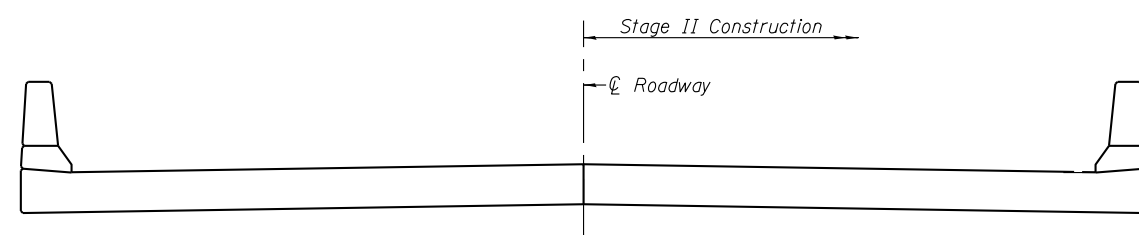
STAGE I REMOVAL
(Looking South)



STAGE I CONSTRUCTION
(Looking South)



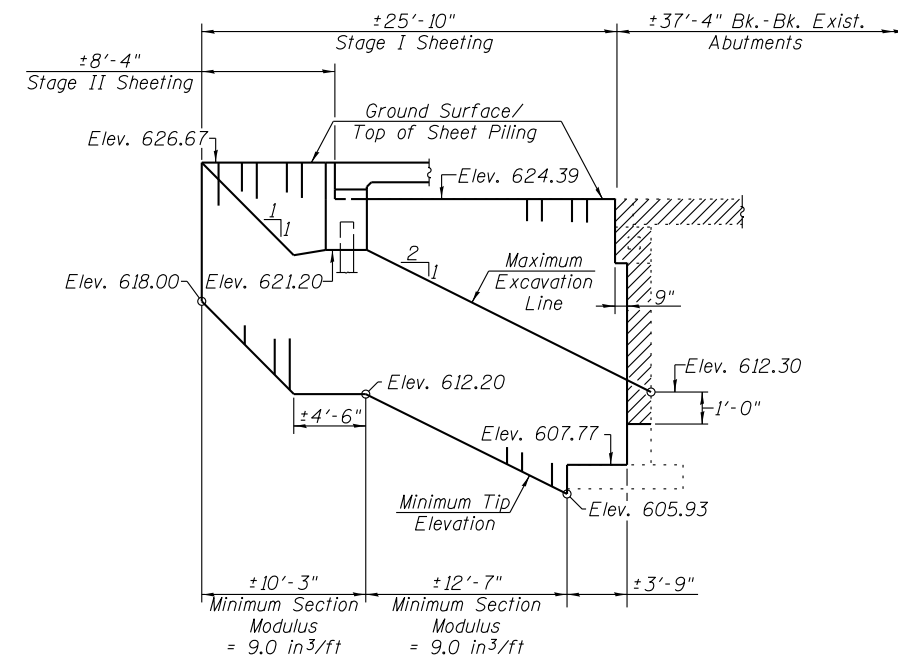
STAGE II REMOVAL
(Looking South)



STAGE II CONSTRUCTION
(Looking South)

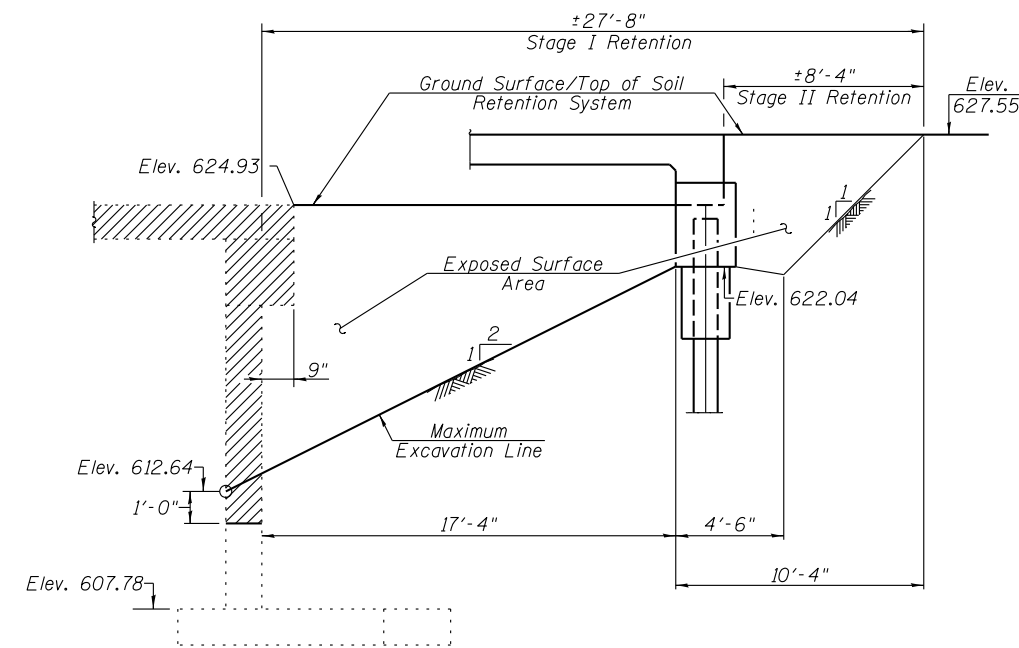
- Indicates Limits of Removal of Existing Structure

Cost of removing guardrail, steel railings and bituminous overlay with waterproofing membrane system is included in the cost of Removal of Existing Structure.
For quantity of Temporary Concrete Barrier see Roadway Plans.
For details of Temporary Concrete Barrier see Sheet 4 of 19.



TEMPORARY SHEET PILING DETAIL - NORTH ABUTMENT
(Looking East)

If the Contractor chooses to alter the temporary cantilevered sheet piling design requirements shown on the plans, a design submittal including plan details and calculations will be required for review and acceptance by the Engineer.
The Contractor shall connect the first sheet to the existing abutment wall to ensure stability of sheets driven to the top of the existing footing. This connection shall be reviewed and accepted by the Engineer and included in the cost for Temporary Sheet Piling.



TEMPORARY SOIL RETENTION SYSTEM AT S. ABUT.
(Looking East)

A cantilevered sheet piling design does not appear feasible and additional members or other retention systems may be necessary. The Contractor shall submit a temporary soil retention system design including plan details and calculations for review and acceptance by the Engineer.

FILE NAME =	USER NAME =	DESIGNED -	REVISED -		Allen Henderson & Associates, Inc. Civil and Structural Engineers Springfield, IL 62703 Phone: (217)544-8033 IL Design Firm No. 184-001907	STAGE CONSTRUCTION DETAILS STRUCTURE NO. 029-0072	F.A.P. RTE.	SECTION	COUNTY	TOTAL SHEETS	SHEET NO.
		CHECKED -	REVISED -				574	12BR-1	FULTON	62	26
		DRAWN -	REVISED -				CONTRACT NO. 68732				
		CHECKED -	REVISED -				ILLINOIS FED. AID PROJECT				
						STAGE NO. 3 OF 19 SHEETS					