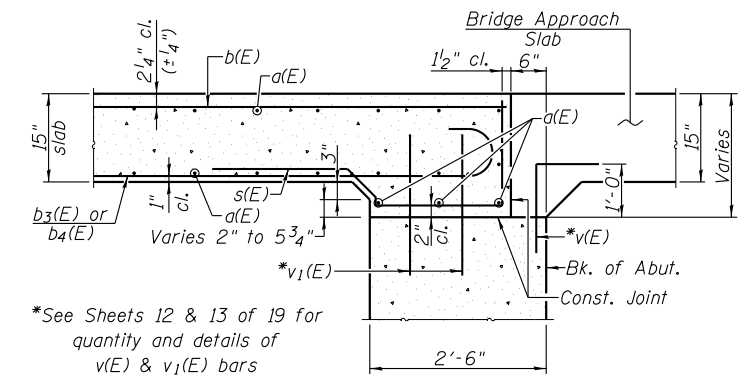


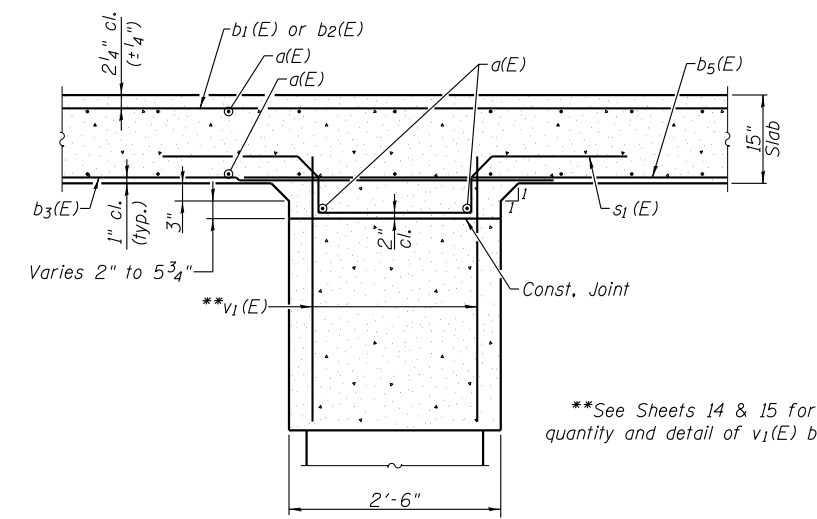
PLAN

MIN. BAR LAP
 #5 = 2'-10"
 #8 = 5'-10"



SECTION A-A

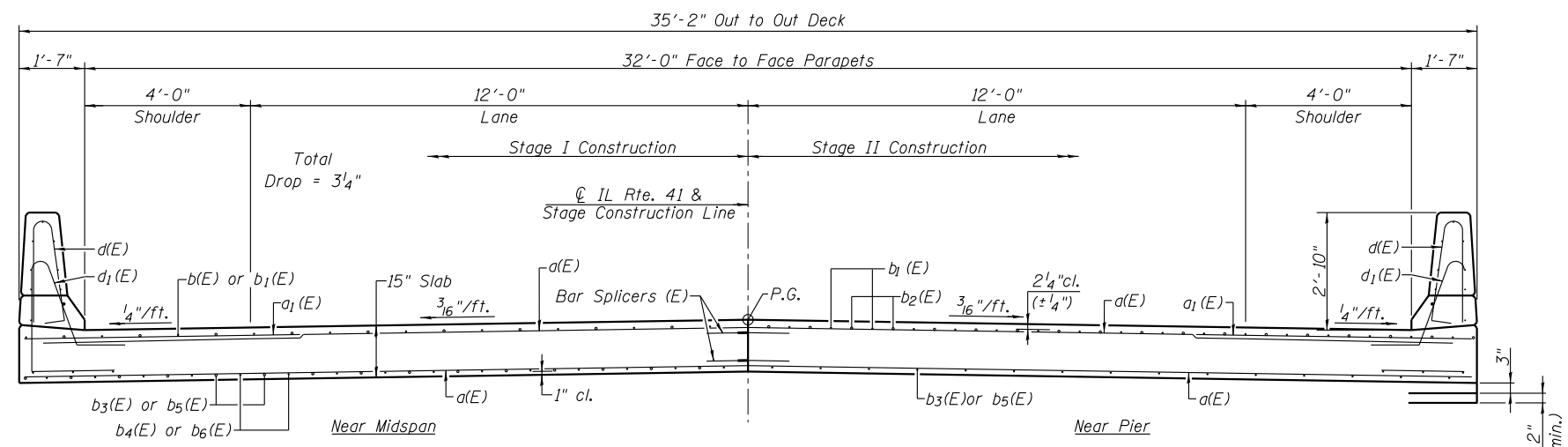
*See Sheets 12 & 13 of 19 for quantity and details of v(E) & v1(E) bars




SECTION B-B

**See Sheets 14 & 15 for quantity and detail of v1(E) bar.

Notes:
 See Sheet 9 of 19 for superstructure details, parapet reinforcement and Bill of Material.
 Bars indicated thus 36 x 2-#8 etc. indicates 36 lines of bars with 2 lengths per line.
 See Sheet 17 of 19 for Bar Splicer details.



CROSS SECTION
 (Looking South)

FILE NAME =	USER NAME =	DESIGNED -	REVISED -	 Allen Henderson & Associates, Inc. Civil and Structural Engineers Springfield, IL 62703 Phone: (217)544-8033 IL Design Firm No. 184-001907	SUPERSTRUCTURE STRUCTURE NO. 029-0072 SHEET NO. 8 OF 19 SHEETS	F.A.P. RTE.	SECTION	COUNTY	TOTAL SHEETS	SHEET NO.	
		CHECKED -	REVISED -			574	12BR-1	FULTON	62	31	
		PLOT SCALE =	REVISED -			CONTRACT NO. 68732					
		PLOT DATE =	REVISED -			ILLINOIS FED. AID PROJECT					