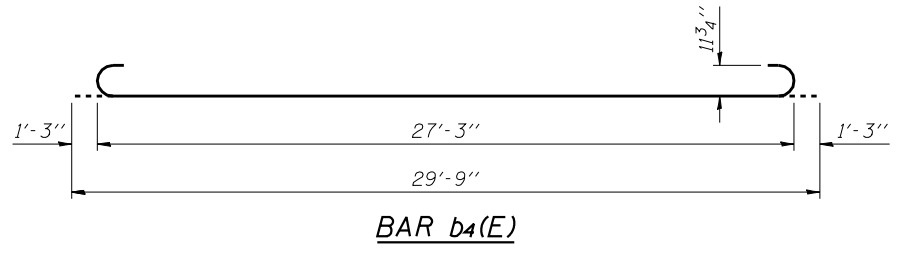
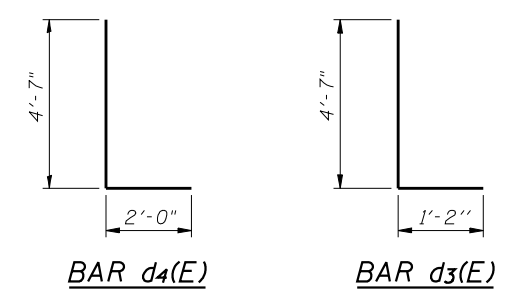
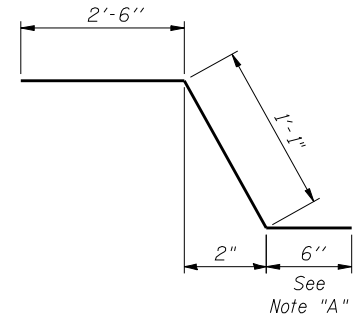
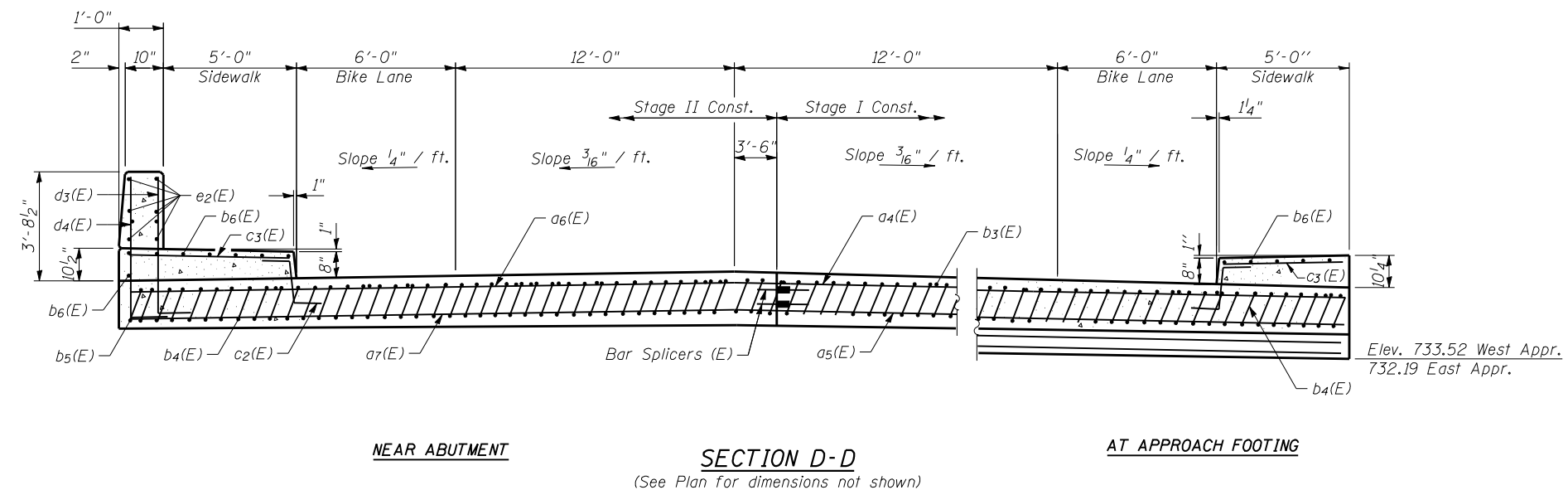


Notes:
 See sheet 13 & 14 of 27 for Detail A.
 Approach slab and parapet concrete shall be paid for as Concrete Superstructure.
 Approach footing concrete shall be paid for as Concrete Structures.
 Reinforcement shall be paid for as Reinforcement Bars, Epoxy Coated.
 For v(E) bar details, see sheet 11 of 27.
 The approach footing maximum applied service bearing pressure (Q_{max}) = 2.0 ksf.
 For bar splicer details, see sheet 26 of 27.
 Cost of excavation for approach footing included with Concrete Structures.
 For Porous Granular Embankment (Special) and drainage treatment details, see sheet 2 of 27.



**TWO APPROACHES
 BILL OF MATERIAL**

Bar	No.	Size	Length	Shape
a ₄ (E)	50	#4	19'-3"	—
a ₅ (E)	92	#5	19'-3"	—
a ₆ (E)	50	#4	26'-3"	—
a ₇ (E)	92	#5	26'-3"	—
b ₃ (E)	74	#4	29'-8"	—
b ₄ (E)	220	#9	29'-9"	—
b ₅ (E)	4	#4	14'-8"	—
b ₆ (E)	32	#5	29'-8"	—
c ₂ (E)	120	#5	3'-11"	—
c ₃ (E)	120	#5	4'-8"	—
d ₃ (E)	64	#6	5'-9"	—
d ₄ (E)	64	#4	6'-7"	—
e ₂ (E)	32	#4	14'-8"	—
t(E)	188	#4	9'-8"	—
w(E)	80	#5	19'-3"	—
w ₁ (E)	80	#5	26'-3"	—
Concrete Superstructure			Cu. Yd.	160.2
Concrete Structures			Cu. Yd.	28.3
Reinforcement Bars, Epoxy Coated			Pound	37,870

*** 32,860 lbs.(Superstructure) 5010 (Substructure)

Note 'A'
 In lieu of bottom leg, c₂(E) bars may be cored and set according to Article 509.06 of the Standard Specifications. Cored holes shall be roughened or scored per manufacturer's recommendations. Maximum depth of cored hole shall not exceed 9".

FILE NAME = 71019-015-asp-slab-detail.dwg
 CB PROJECT NO. 09070-7

BA-R 1-27-12

Coombe-Bloxdorf P.C.
 CIVIL ENGINEERS-
 STRUCTURAL ENGINEERS-
 LAND SURVEYORS
 Design Firm License No. 184-002703

USER NAME = .MML.	DESIGNED - GJB	REVISED -
PLOT SCALE = 0:2.000000 '1' / IN.	CHECKED - RKM	REVISED -
PLOT DATE = 8/10/2012	DRAWN - CFC	REVISED -
	CHECKED - RKM/MCB	REVISED -

**STATE OF ILLINOIS
 DEPARTMENT OF TRANSPORTATION**

**BRIDGE APPROACH SLAB DETAILS
 STRUCTURE NO. 010-0291**

SHEET NO. 15 OF 27 SHEETS

F.A.I. RTE.	SECTION	COUNTY	TOTAL SHEETS	SHEET NO.
57	(10-32HB-2)BY	CHAMPAIGN	81	53
CONTRACT NO. 70109			ILLINOIS FED. AID PROJECT	

(Sheet 3 of 3)