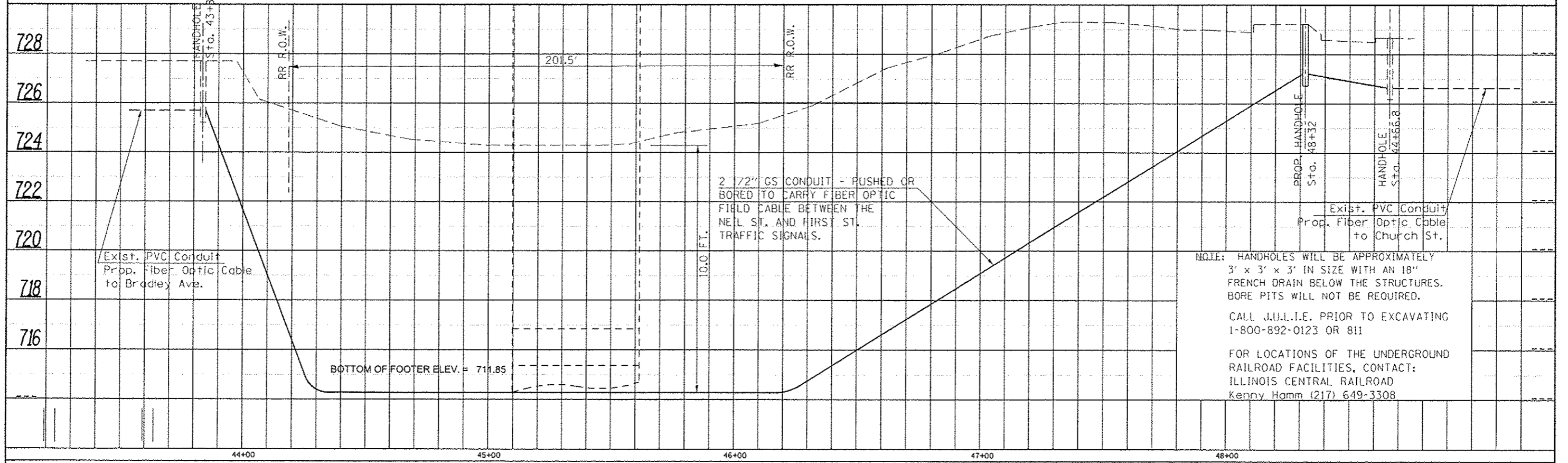
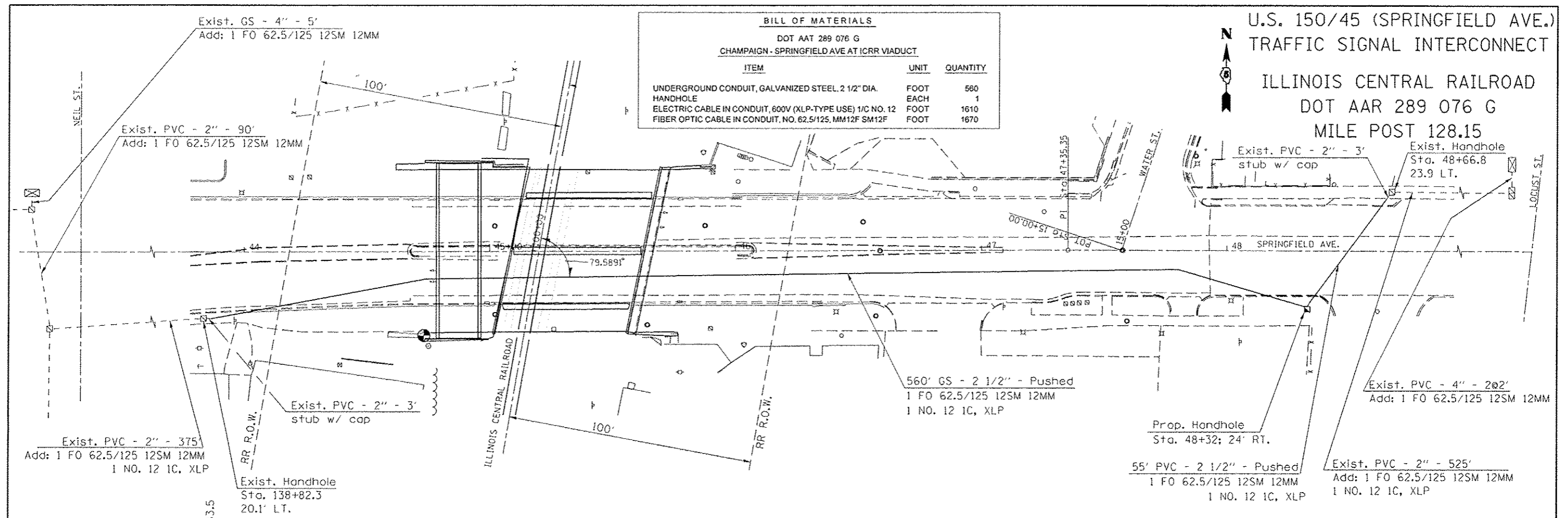


U.S. 150/45 (SPRINGFIELD AVE.)
 TRAFFIC SIGNAL INTERCONNECT
 ILLINOIS CENTRAL RAILROAD
 DOT AAR 289 076 G
 MILE POST 128.15

BILL OF MATERIALS
 DOT AAT 289 076 G
 CHAMPAIGN - SPRINGFIELD AVE AT ICRR VIADUCT

ITEM	UNIT	QUANTITY
UNDERGROUND CONDUIT, GALVANIZED STEEL, 2 1/2" DIA.	FOOT	560
HANDHOLE	EACH	1
ELECTRIC CABLE IN CONDUIT, 600V (XLP-TYPE USE) 1/C NO. 12	FOOT	1610
FIBER OPTIC CABLE IN CONDUIT, NO. 62.5/125, MM12F SM12F	FOOT	1670



NOTE: HANDHOLES WILL BE APPROXIMATELY 3' x 3' x 3' IN SIZE WITH AN 18" FRENCH DRAIN BELOW THE STRUCTURES. BORE PITS WILL NOT BE REQUIRED.
 CALL J.U.L.I.E. PRIOR TO EXCAVATING 1-800-892-0123 OR 811
 FOR LOCATIONS OF THE UNDERGROUND RAILROAD FACILITIES, CONTACT: ILLINOIS CENTRAL RAILROAD Kenny Hamm (217) 649-3308

FILE NAME: c:\pwwork\dot\biggord\0272722\0570	USER NAME: biggord	DESIGNED: ROB	REVISED:	STATE OF ILLINOIS DEPARTMENT OF TRANSPORTATION	F.A. RTE.	SECTION	COUNTY	TOTAL SHEETS	SHEET NO.
	PLOT SCALE: 48.0000 1" = 48'	DRAWN: ROB	REVISED:		DE MISC 2012-1			18	8
	PLOT DATE: 4/24/2012	CHECKED:	REVISED:		CONTRACT NO. 70942				
		DATE:	REVISED:		ILLINOIS FED. AID PROJECT				

VARIOUS
 CHAMPAIGN, VERMILION, McLEAN