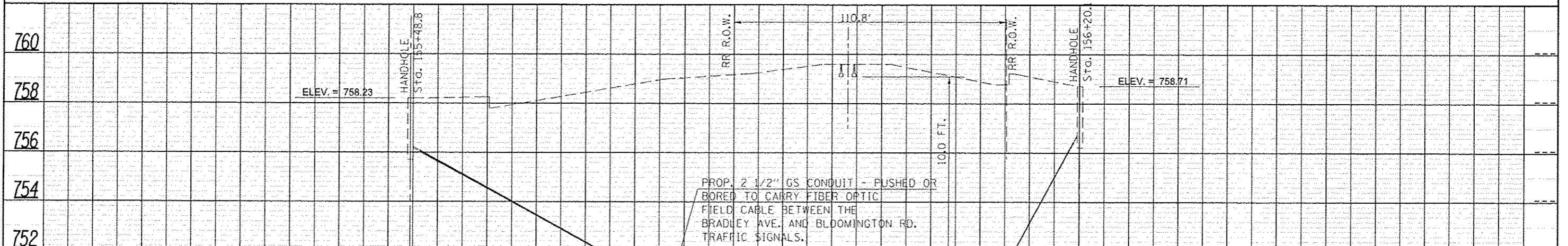
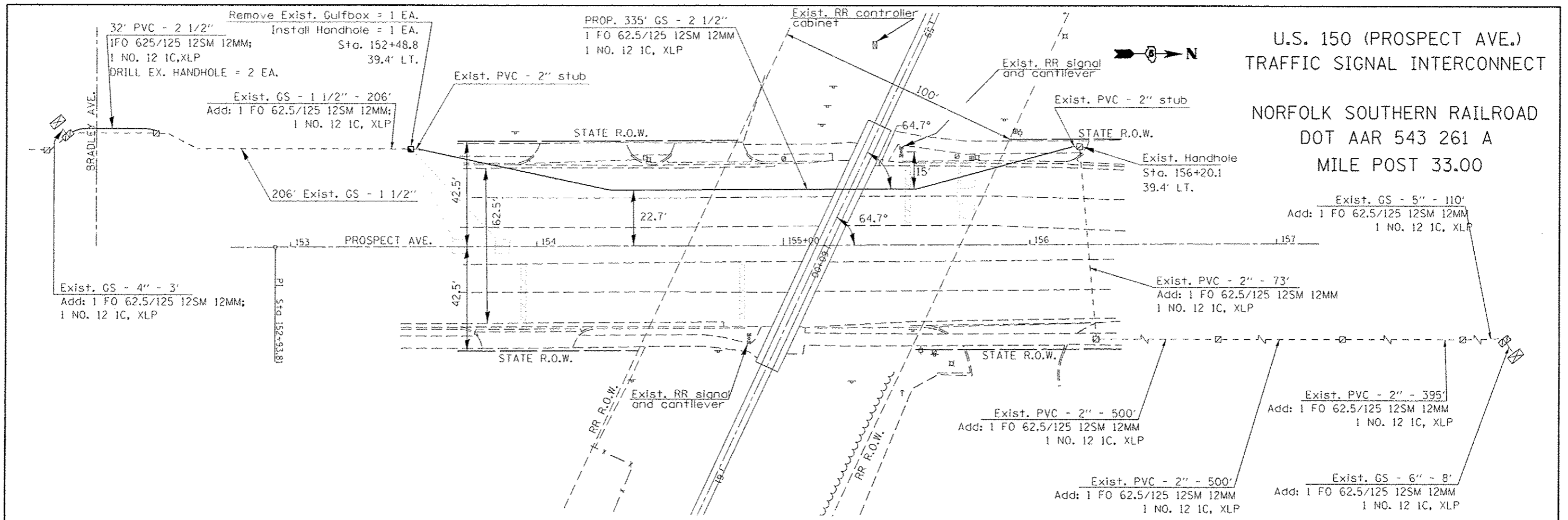


U.S. 150 (PROSPECT AVE.)  
TRAFFIC SIGNAL INTERCONNECT

NORFOLK SOUTHERN RAILROAD  
DOT AAR 543 261 A  
MILE POST 33.00



**BILL OF MATERIALS**  
DOT AAR 543 261 A  
CHAMPAIGN - PROSPECT AVE N. OF BROADWAY

ITEM	UNIT	QUANTITY
UNDERGROUND CONDUIT, GALVANIZED STEEL, 2 1/2" DIA.	FOOT	335
HANDHOLE	EACH	1
GULFBOX JUNCTION REMOVAL	EACH	1
ELECTRIC CABLE IN CONDUIT, 600V (XLP-TYPE USE) 1/2 NO. 12	FOOT	2162
FIBER OPTIC CABLE IN CONDUIT, NO. 62.5/125, MM12F SM12F	FOOT	2246
DRILL EXISTING HANDHOLE	EACH	2

CALL J.U.L.I.E. PRIOR TO EXCAVATING  
1-800-892-0123 OR 811

FOR LOCATIONS OF THE UNDERGROUND  
RAILROAD SIGNAL UTILITIES, CONTACT:  
NORFOLK SOUTHERN RAILROAD  
GREG TEMPLE (217) 853-9255  
LYNN HYMSTED (217) 433-3293

BORE PITS WILL NOT BE REQUIRED.

CHAMPAIGN, VERMILION, McLEAN