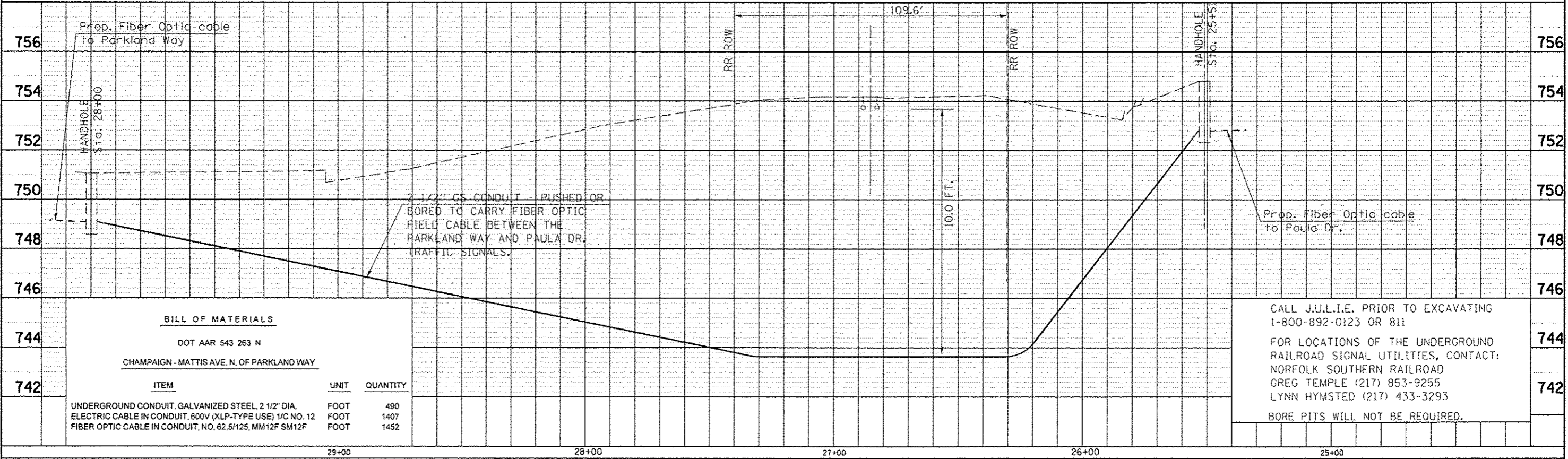
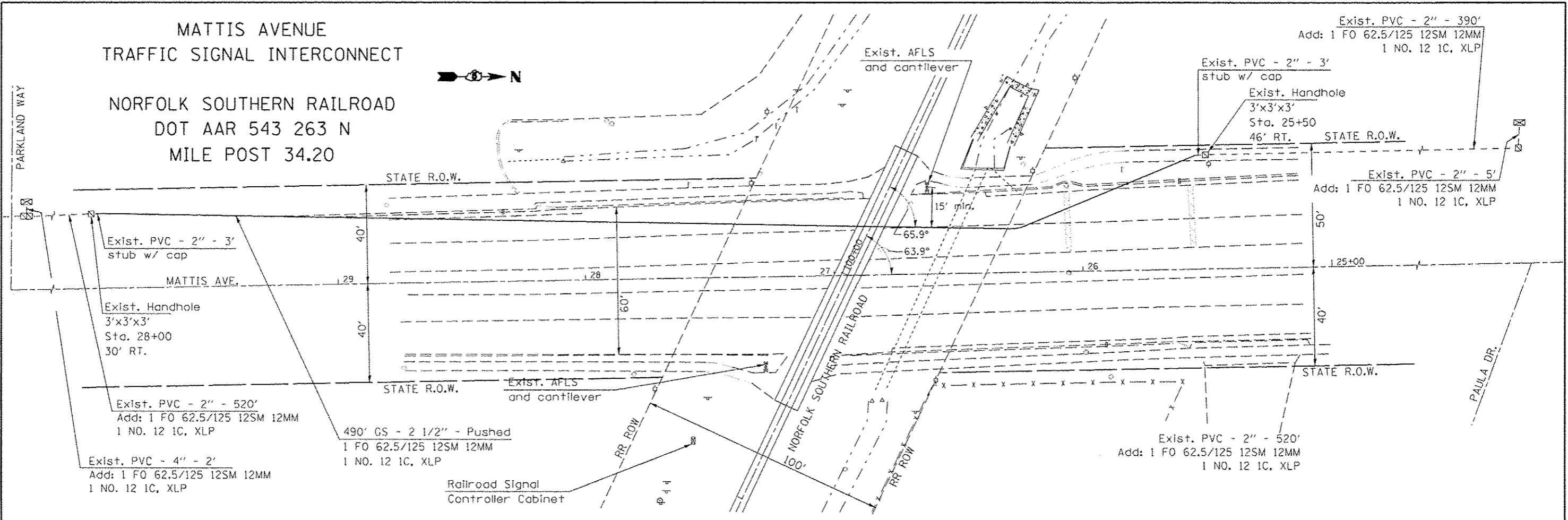


MATTIS AVENUE
TRAFFIC SIGNAL INTERCONNECT

NORFOLK SOUTHERN RAILROAD
DOT AAR 543 263 N
MILE POST 34.20



BILL OF MATERIALS

DOT AAR 543 263 N
CHAMPAIGN - MATTIS AVE. N. OF PARKLAND WAY

ITEM	UNIT	QUANTITY
UNDERGROUND CONDUIT, GALVANIZED STEEL, 2 1/2" DIA.	FOOT	490
ELECTRIC CABLE IN CONDUIT, 600V (XLP-TYPE USE) 1/2 NO. 12	FOOT	1407
FIBER OPTIC CABLE IN CONDUIT, NO. 62.5/125, MM12F SM12F	FOOT	1452

CALL J.U.L.I.E. PRIOR TO EXCAVATING
1-800-892-0123 OR 811
FOR LOCATIONS OF THE UNDERGROUND
RAILROAD SIGNAL UTILITIES, CONTACT:
NORFOLK SOUTHERN RAILROAD
GREG TEMPLE (217) 853-9255
LYNN HYMSTED (217) 433-3293
BORE PITS WILL NOT BE REQUIRED.