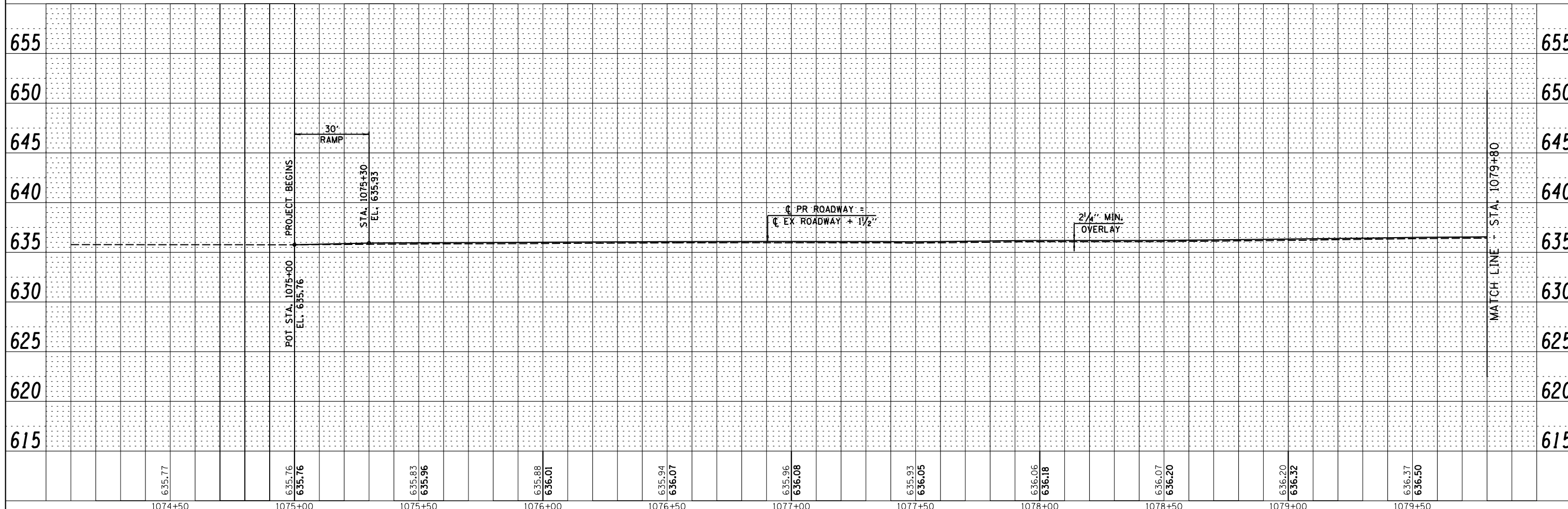
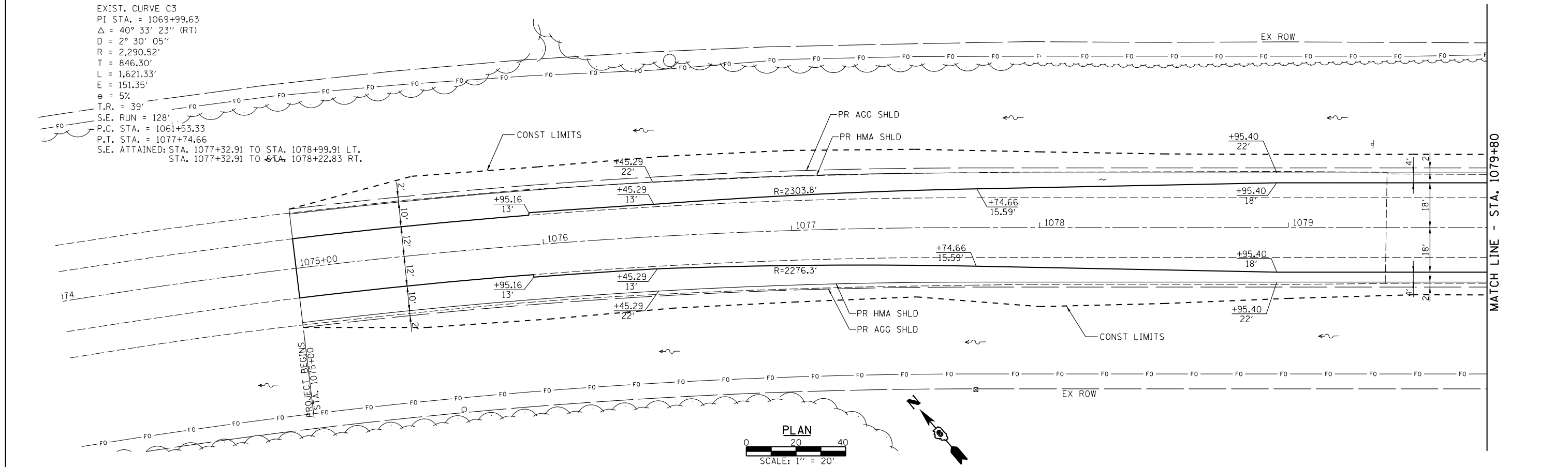


EXIST. CURVE C3  
 PI STA. = 1069+99.63  
 $\Delta = 40^\circ 33' 23''$  (RT)  
 $D = 2^\circ 30' 05''$   
 $R = 2,290.52'$   
 $T = 846.30'$   
 $L = 1,621.33'$   
 $E = 151.35'$   
 $e = 5\%$   
 $T.R. = 39'$   
 $S.E. RUN = 128'$   
 $P.C. STA. = 1061+53.33$   
 $P.T. STA. = 1077+74.66$   
 $S.E. ATTAINED: STA. 1077+32.91 TO STA. 1078+99.91 LT.$   
 $STA. 1077+32.91 TO STA. 1078+22.83 RT.$

PLAN	SURVEYED	DATE
NOTE BOOK	PLOTTED	BY
NO.	CHECKED	
	FILE NAME	

PROFILE	SURVEYED	DATE
NOTE BOOK	PLOTTED	BY
NO.	CHECKED	
	NOTATIONS CHFD	



USER NAME = *USER*	DESIGNED -	REVISED -
PLOT SCALE = *SCALE*	CHECKED -	REVISED -
PLOT DATE = *DATE*	DRAWN -	REVISED -
	CHECKED -	REVISED -

**Allen Henderson & Associates, Inc.**  
 Civil and Structural Engineers Springfield, IL  
 62703 Phone: (217)544-8033 IL Design Firm  
 No. 184-001907

**PLAN & PROFILE**  
 SCALE: 1" = 20' SHEET NO. 1 OF 5 SHEETS STA. 1075+00 TO STA. 1079+80

F.A.P. RTE.	SECTION	COUNTY	TOTAL SHEETS	SHEET NO.
67	3 (N, L, RS-3)	CASS	64	16
CONTRACT NO. 72075				
FED. ROAD DIST. NO. ILLINOIS FED. AID PROJECT				