

STATE OF ILLINOIS
DEPARTMENT OF TRANSPORTATION
DIVISION OF HIGHWAYS

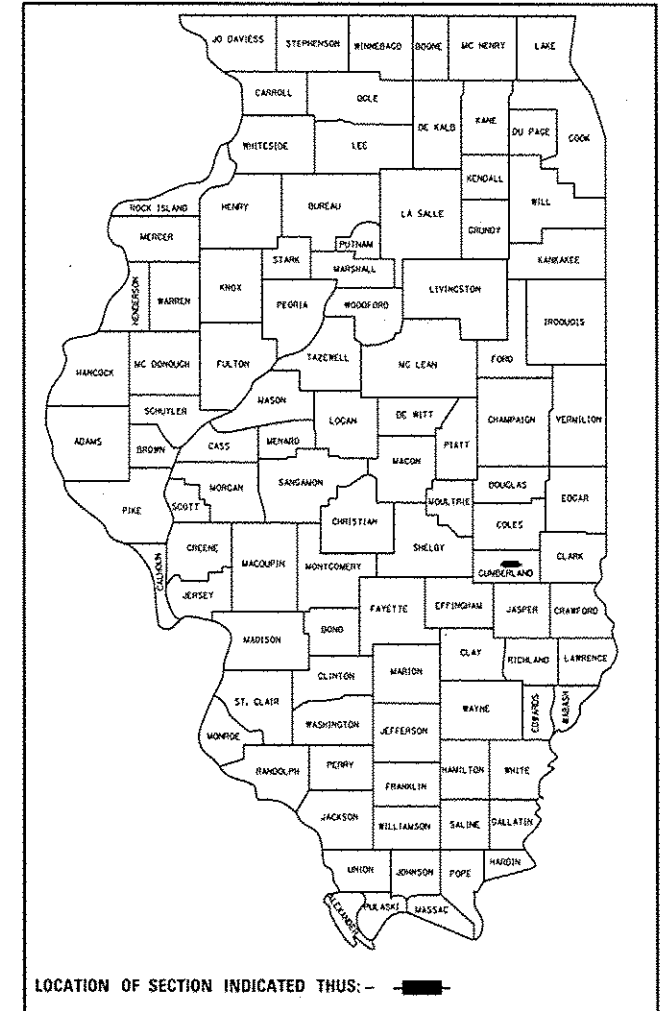
**PROPOSED
HIGHWAY PLANS**

F.A.I. ROUTE 70 (I-70)
SECTION (18-47-VB)K,(18-47B,18-47HB)BR
PROJECT ACIM-070-4(142)120
BRIDGE REMOVAL-DEMOLITION
CUMBERLAND COUNTY
C-97-108-10

F.A.I. RTE.	SECTION	COUNTY	TOTAL SHEETS	SHEET NO.
70		CUMBERLAND	147	1
		ILLINOIS	CONTRACT NO. 74466	

• (18-47-VB)K,(18-47B,18-47HB)BR

D-97-049-10



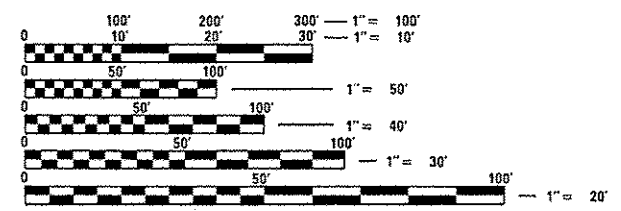
FOR INDEX OF SHEETS, SEE SHEET NO. 2

STATION EQUATION:
STA. 575 + 54.38 (BK) = STA. 80 + 00.00 (AH)

ADT = 19,000 (2012)
51% TRUCKS

F.A.I. ROUTE 70
SECTION (18-47-VB)K,(18-47B,18-47HB)BR
ENDS STA. 166 + 00 (WB)
STA. 166 + 00 (EB)

F.A.I. ROUTE 70
SECTION (18-47-VB)K,(18-47B,18-47HB)BR
BEGINS STA. 118 + 00 (WB)
STA. 119 + 00 (EB)

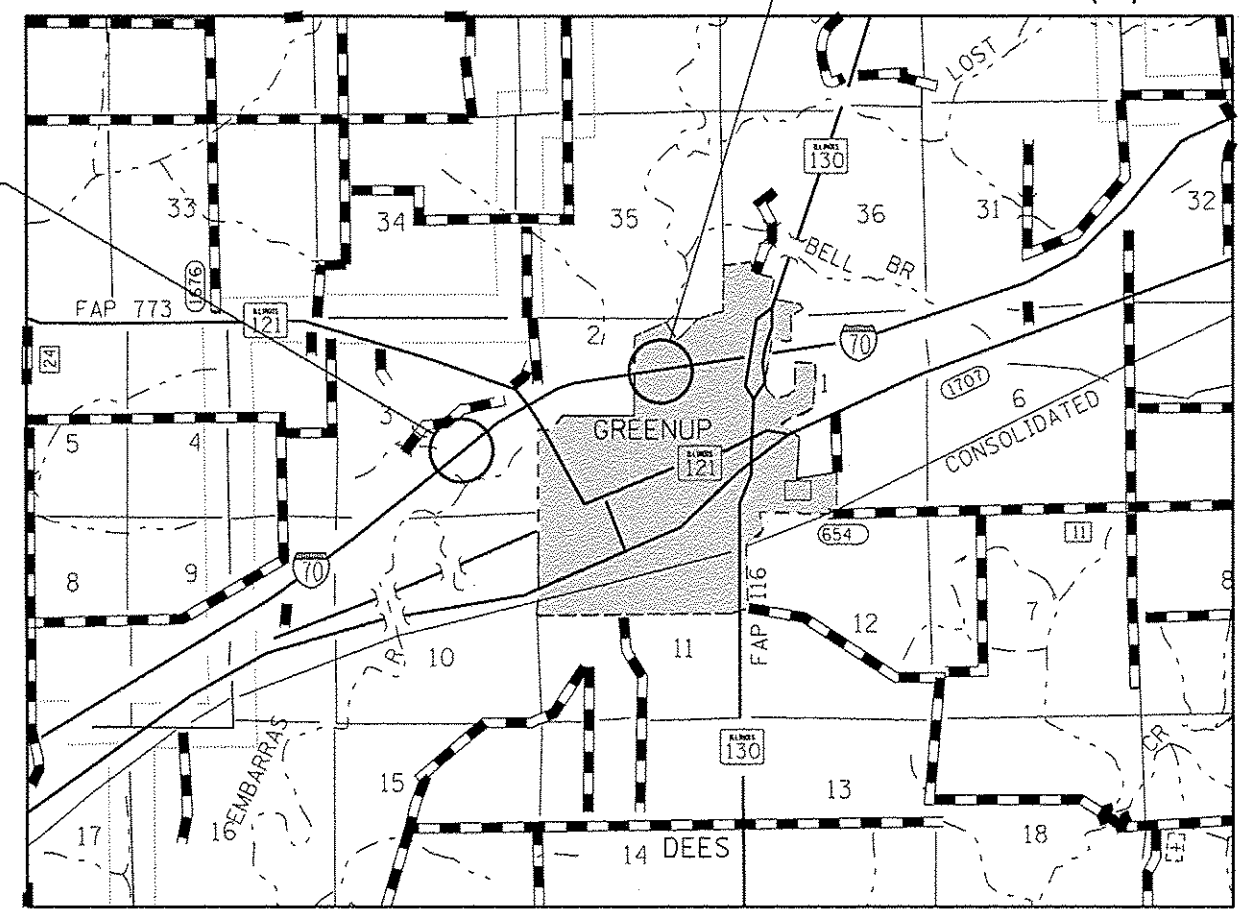


FULL SIZE PLANS HAVE BEEN PREPARED USING STANDARD ENGINEERING SCALES. REDUCED SIZED PLANS WILL NOT CONFORM TO STANDARD SCALES. IN MAKING MEASUREMENTS ON REDUCED PLANS, THE ABOVE SCALES MAY BE USED.

J.U.L.I.E.
JOINT UTILITY LOCATION INFORMATION FOR EXCAVATION
1-800-892-0123
OR 811

PROJECT ENGINEER: TOM RONAN (217)-342-8320
PROJECT MANAGER: BRETT WALKER (217) 342-8314

CONTRACT NO. 74466



GROSS LENGTH = 4,800 FT. = 0.91 MILE
NET LENGTH = 2,725 FT. = 0.52 MILE

STATE OF ILLINOIS
DEPARTMENT OF TRANSPORTATION
DIVISION OF HIGHWAYS

SUBMITTED August 17 2012
Rogan K. Driskell
DEPUTY DIRECTOR OF HIGHWAYS, REGION ENGINEER

October 5 2012
John D. Baranzelli P.E.
ENGINEER OF DESIGN AND ENVIRONMENT

October 5 2012
William R. Frey
DIRECTOR OF HIGHWAYS, CHIEF ENGINEER

PRINTED BY THE AUTHORITY
OF THE STATE OF ILLINOIS