

**SYMBOLS**

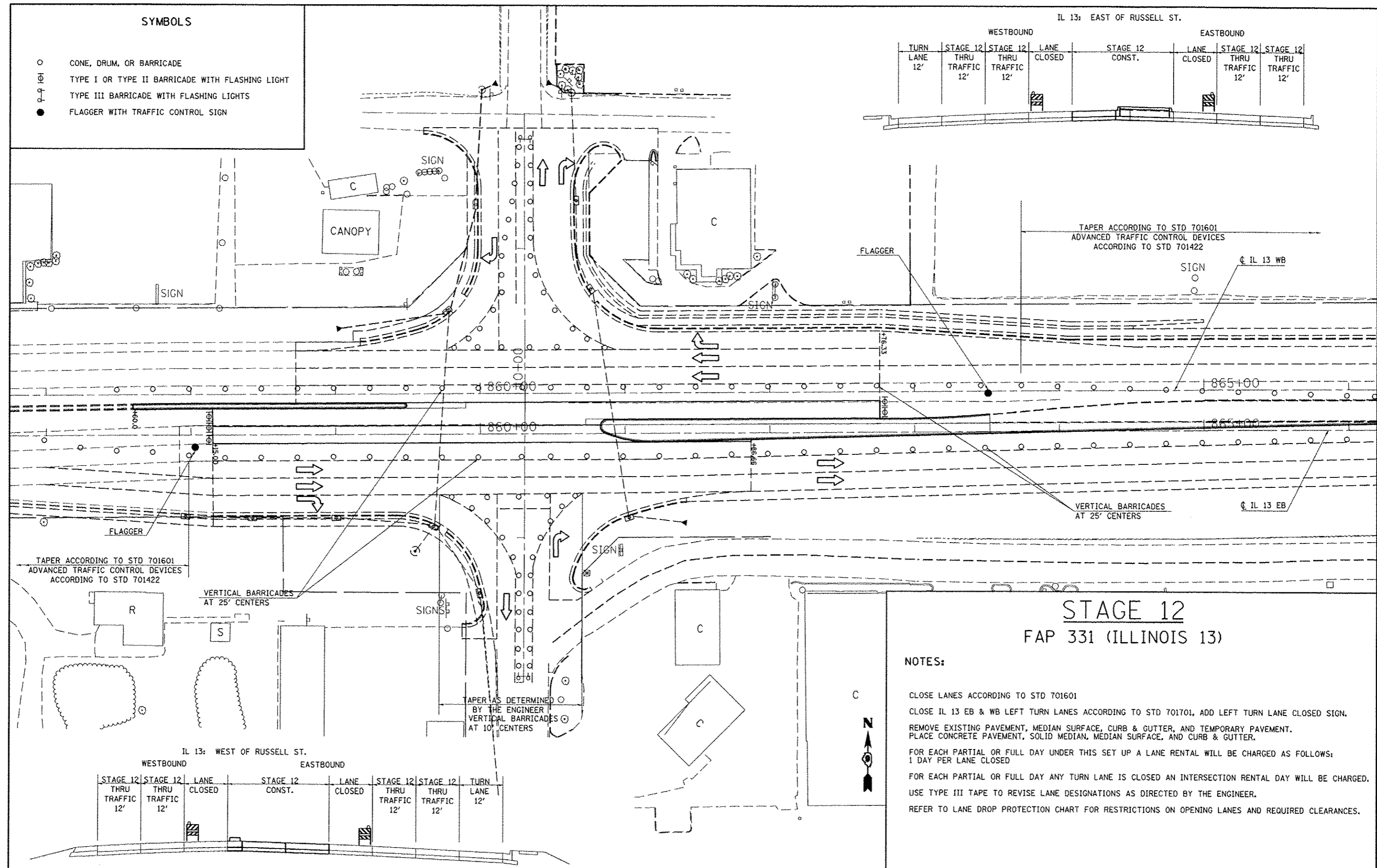
- CONE, DRUM, OR BARRICADE
- ⊕ TYPE I OR TYPE II BARRICADE WITH FLASHING LIGHT
- ⊙ TYPE III BARRICADE WITH FLASHING LIGHTS
- FLAGGER WITH TRAFFIC CONTROL SIGN

IL 13: EAST OF RUSSELL ST.

WESTBOUND

EASTBOUND

TURN LANE 12'	STAGE 12 THRU TRAFFIC 12'	STAGE 12 THRU TRAFFIC 12'	LANE CLOSED	STAGE 12 CONST.	LANE CLOSED	STAGE 12 THRU TRAFFIC 12'	STAGE 12 THRU TRAFFIC 12'



TAPER ACCORDING TO STD 701601  
ADVANCED TRAFFIC CONTROL DEVICES  
ACCORDING TO STD 701422

VERTICAL BARRICADES  
AT 25' CENTERS

TAPER ACCORDING TO STD 701601  
ADVANCED TRAFFIC CONTROL DEVICES  
ACCORDING TO STD 701422

VERTICAL BARRICADES  
AT 25' CENTERS

TAPER AS DETERMINED  
BY THE ENGINEER  
VERTICAL BARRICADES  
AT 10' CENTERS

**STAGE 12**  
**FAP 331 (ILLINOIS 13)**

**NOTES:**

- CLOSE LANES ACCORDING TO STD 701601
- CLOSE IL 13 EB & WB LEFT TURN LANES ACCORDING TO STD 701701, ADD LEFT TURN LANE CLOSED SIGN.
- REMOVE EXISTING PAVEMENT, MEDIAN SURFACE, CURB & GUTTER, AND TEMPORARY PAVEMENT. PLACE CONCRETE PAVEMENT, SOLID MEDIAN, MEDIAN SURFACE, AND CURB & GUTTER.
- FOR EACH PARTIAL OR FULL DAY UNDER THIS SET UP A LANE RENTAL WILL BE CHARGED AS FOLLOWS:  
1 DAY PER LANE CLOSED
- FOR EACH PARTIAL OR FULL DAY ANY TURN LANE IS CLOSED AN INTERSECTION RENTAL DAY WILL BE CHARGED.
- USE TYPE III TAPE TO REVISE LANE DESIGNATIONS AS DIRECTED BY THE ENGINEER.
- REFER TO LANE DROP PROTECTION CHART FOR RESTRICTIONS ON OPENING LANES AND REQUIRED CLEARANCES.

IL 13: WEST OF RUSSELL ST.

WESTBOUND

EASTBOUND

STAGE 12 THRU TRAFFIC 12'	STAGE 12 THRU TRAFFIC 12'	LANE CLOSED	STAGE 12 CONST.	LANE CLOSED	STAGE 12 THRU TRAFFIC 12'	STAGE 12 THRU TRAFFIC 12'	TURN LANE 12'