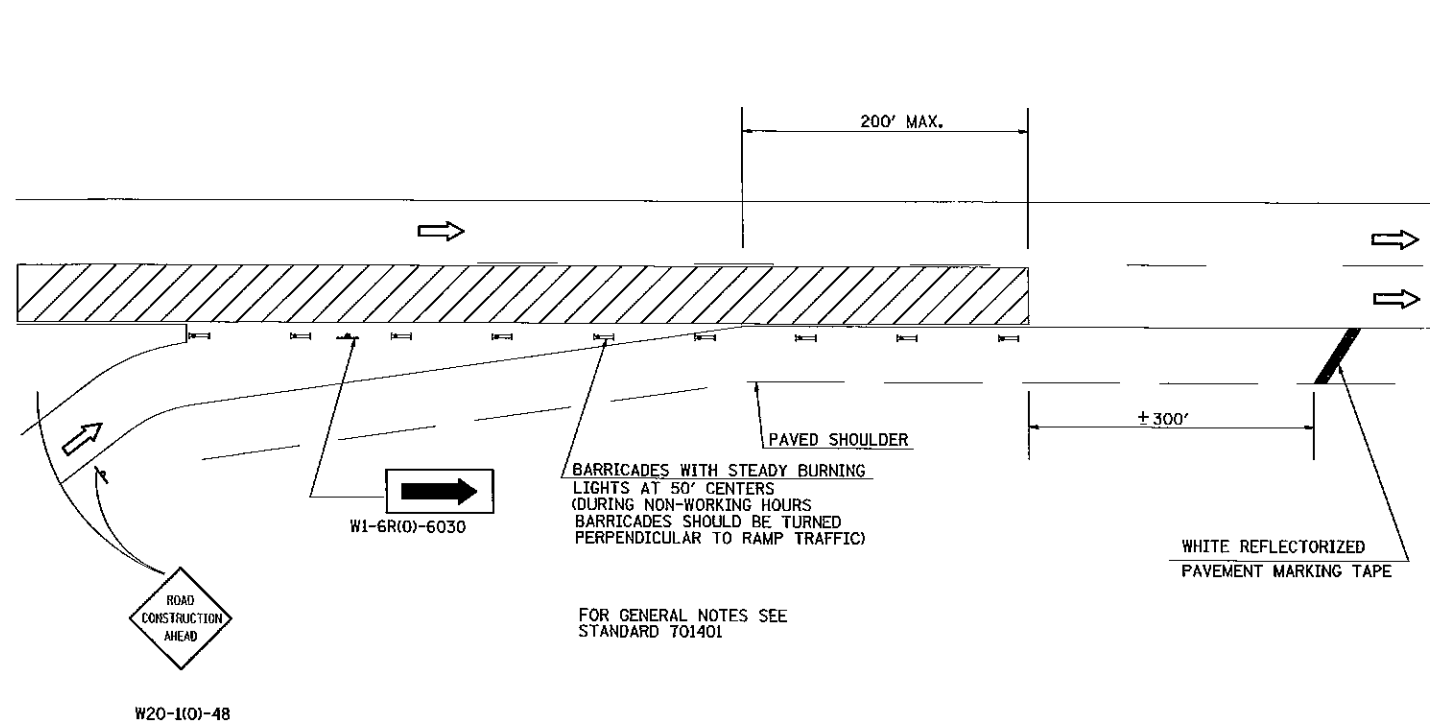
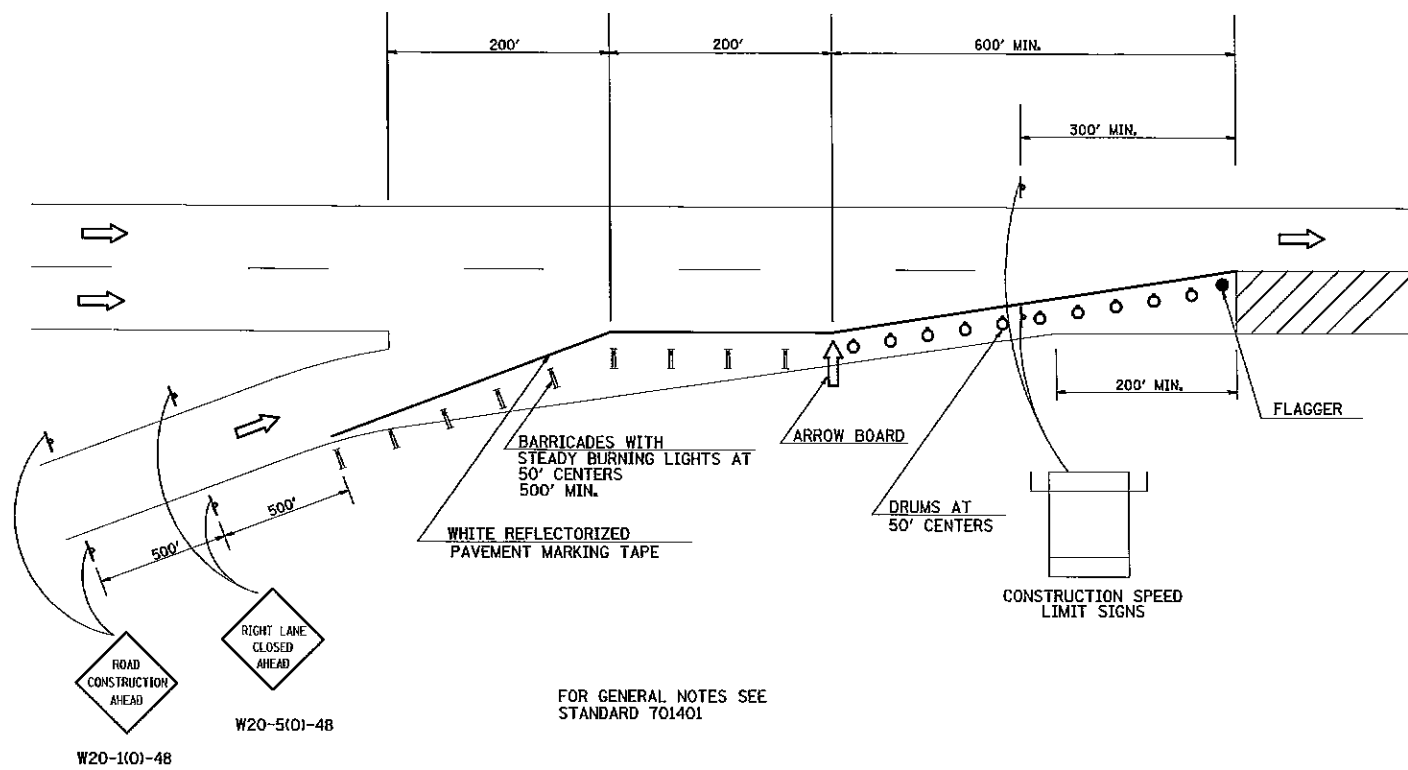


DETAIL OF TRAFFIC CONTROL AT ENTRANCE RAMP



STAGE I
RIGHT LANE CLOSURE PERMITTED AT
ENTRANCE RAMP



STAGE II
RIGHT LANE CLOSURE PERMITTED
200' BEYOND ENTRANCE RAMP

FILE NAME =	USER NAME = Stoverpg	DESIGNED -	REVISED -	STATE OF ILLINOIS DEPARTMENT OF TRANSPORTATION	TRAFFIC CONTROL AT ENTRANCE RAMP			F.A.I. RTE.	SECTION	COUNTY	TOTAL SHEETS	SHEET NO.
cd\pvc\work\pvc\stoverpg\0209709\78299-sh11-de tails.dgn		DRAWN -	REVISED -		SCALE:	SHEET NO. OF SHEETS	STA. TO STA.	57	(77-1.91-4.91-4-1.91-3)R-1	UNION/PULASKI	39	32
PLOT SCALE = 1/8" = 100.0000' / 1"		CHECKED -	REVISED -									
PLOT DATE = 8/16/2012		DATE -	REVISED -									
CONTRACT NO. 78289											ILLINOIS FED. AID PROJECT	