

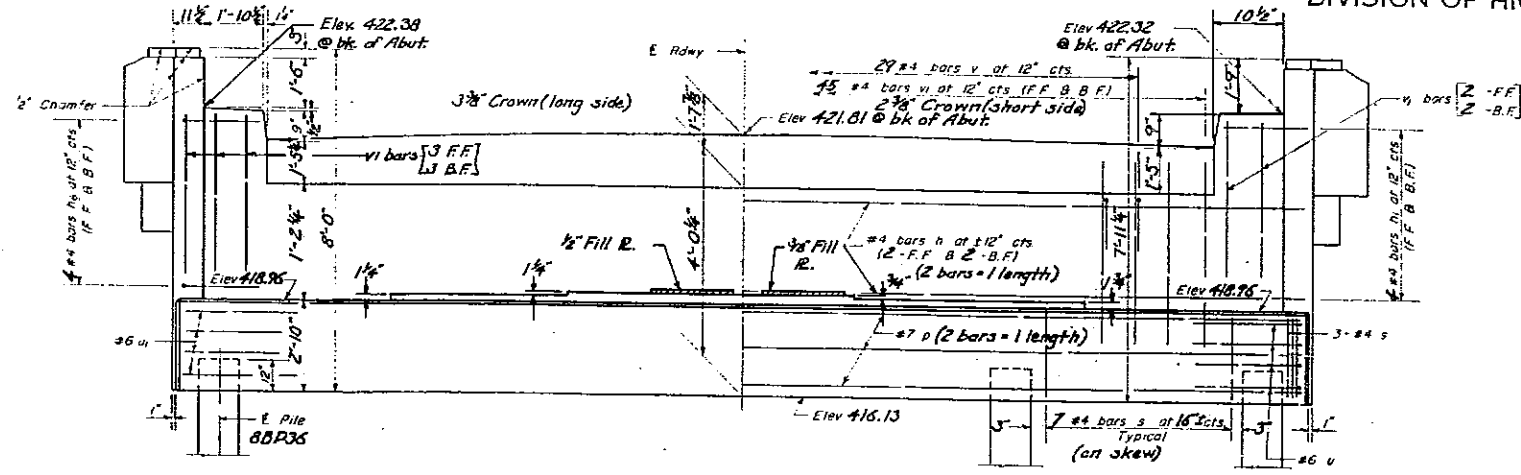
FAI-57

STATE OF ILLINOIS
DEPARTMENT OF PUBLIC WORKS & BUILDINGS
DIVISION OF HIGHWAYS

PROJECT NO.	DATE	TOTAL SHEETS	SHEET NO.
1-1-4	11-18-2	49	20
FED. ROAD DIST. NO. 7		ILLINOIS	FED. AID PROJECT

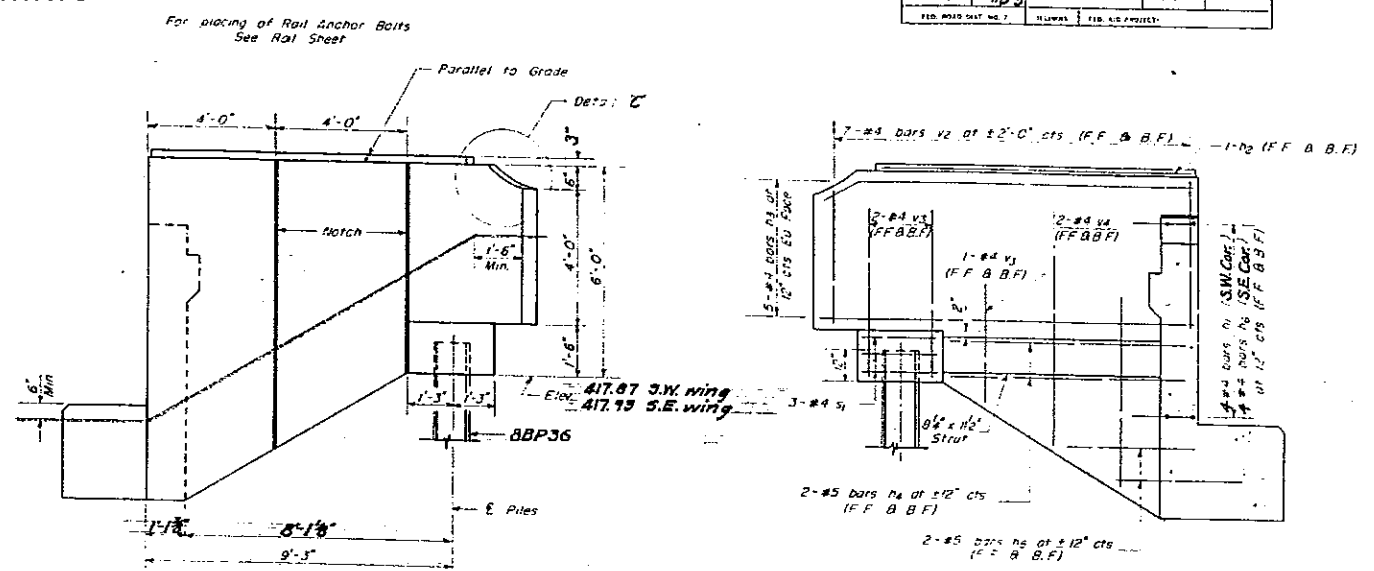
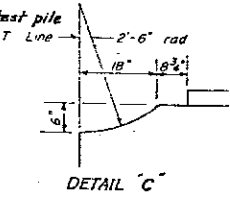
UNION COUNTY

SHEET NO. 13 SHEETS



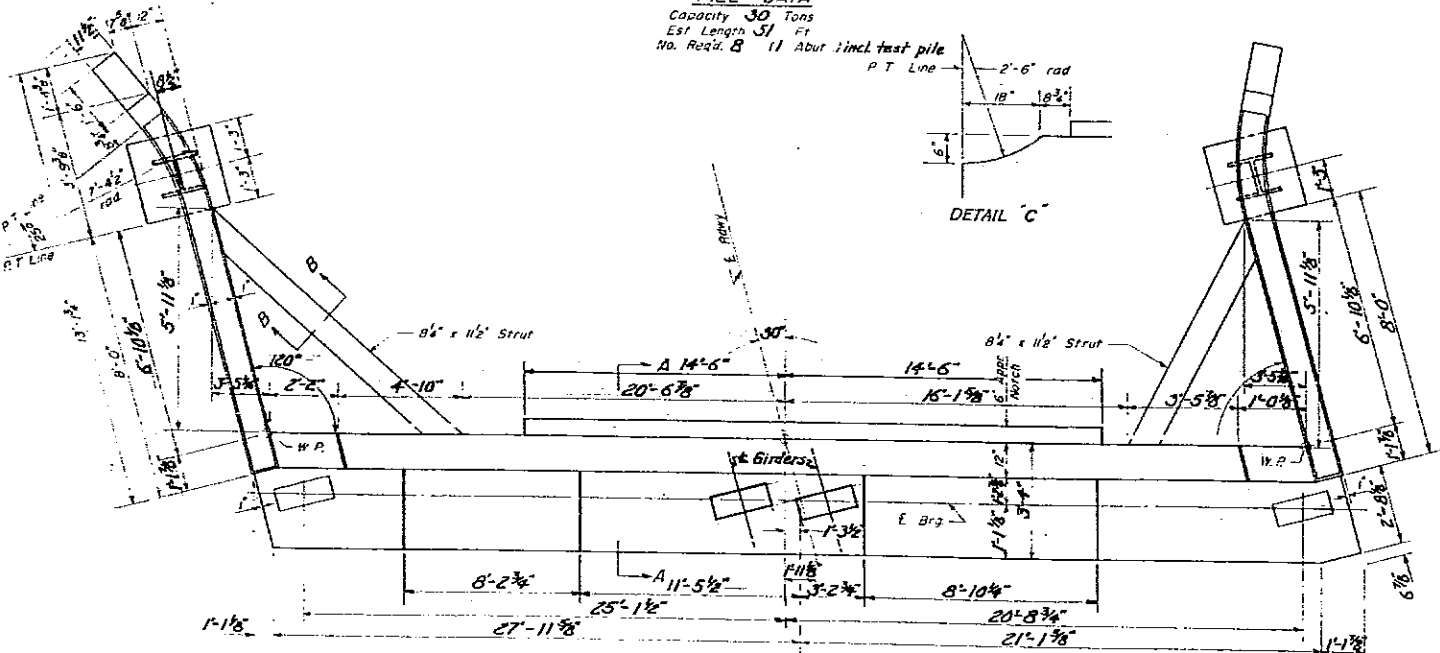
ELEVATION - SO. ABUT. EAST BRIDGE
At Right 25' to E. Rowy (Looking South)

PILE DATA
Capacity 30 Tons
Est. Length 31 FT
No. Reqd. 8 1/2 About Incl. test pile

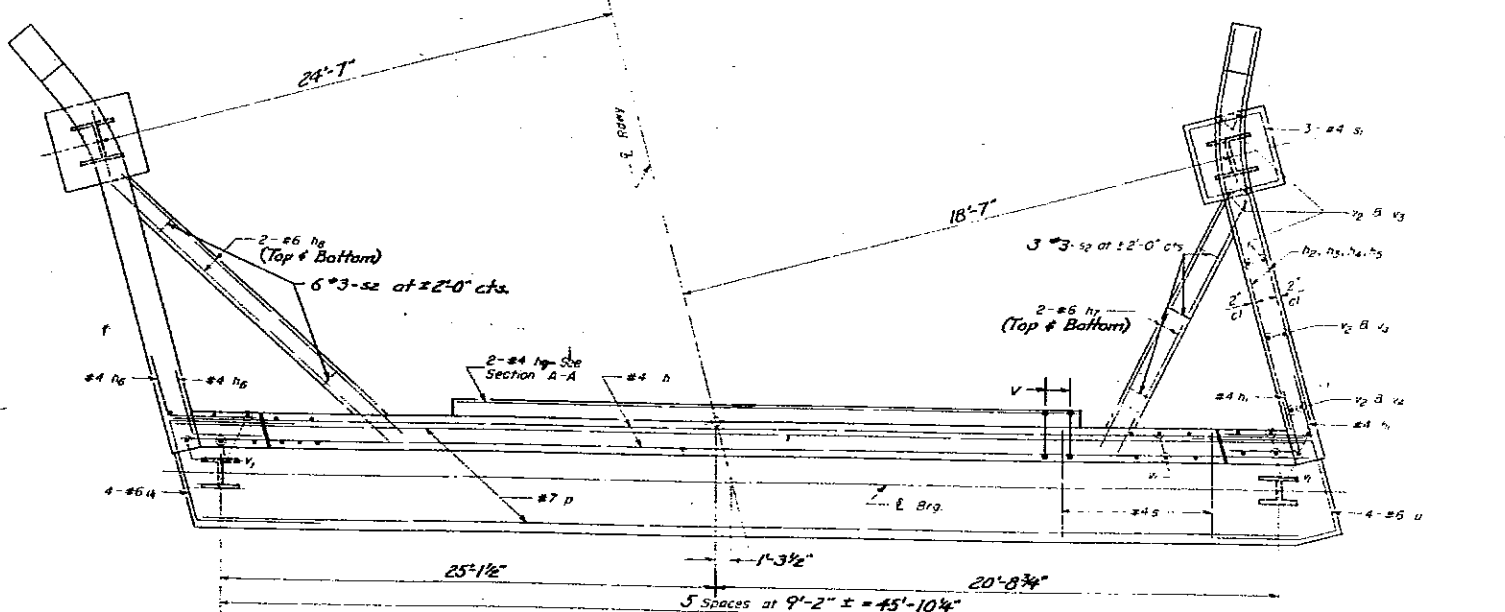


SIDE ELEVATION

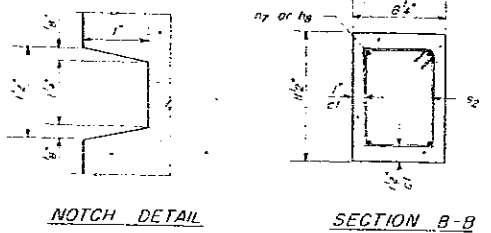
INSIDE ELEVATION OF BRACKET



PLAN OF ABUTMENT
Dimensions

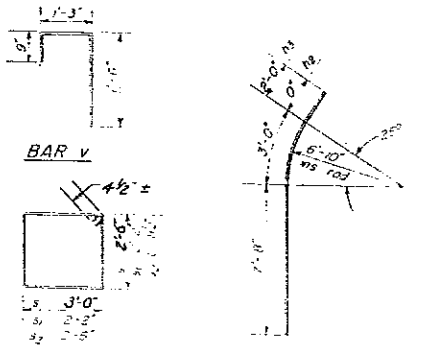


PLAN OF ABUTMENT
Reinforcement & Pile Spacing



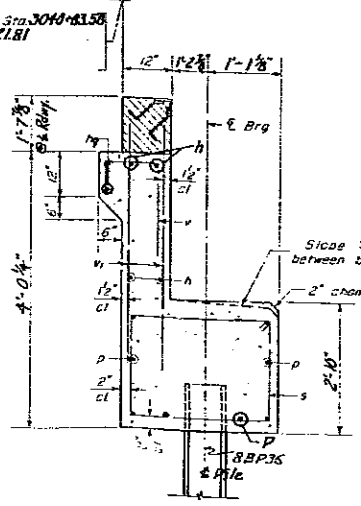
NOTCH DETAIL

SECTION B-B



BAR V

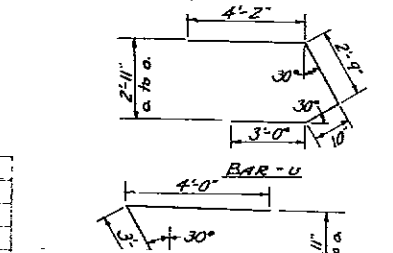
BAR h6



SECTION A-A

BILL OF MATERIAL - 1 ABUTMENT

Bar No.	Size	Length	Shape	Bar No.	Size	Length	Shape
h	#4	24'-9"		s	#4	11'-9"	
h1	#4	2'-6"		s1	#4	9'-3"	
h2	#4	10'-8"		s2	#4	3'-0"	
h3	#4	12'-8"		u	#4	10'-9"	
h4	#5	7'-0"		v	#4	3'-5"	
h5	#5	3'-3"		w	#4	4'-0"	
h6	#4	5'-0"		x	#4	3'-5"	
h7	#4	7'-0"		y	#4	4'-0"	
h8	#4	13'-0"		z	#4	3'-5"	
h9	#4	28'-6"		aa	#4	3'-5"	
p	#7	25'-4"		ab	#4	3'-5"	
Class X Concrete		27.6					
Reinforcement Bars		3170					
Steel Piles 8BP36		357					
Test Pile		One					



BAR = U

F.A.I. RTE.	SECTION	COUNTY	TOTAL SHEETS	SHEET NO.
57	(77-1.91-4.91-4-1.91-31R-1)	UNION/PULASKI	39	35
CONTRACT NO. 78289				
ILLINOIS FED. AID PROJECT				

SOUTH ABUTMENT-EAST BRIDGE
HIGHWAY GRADE SEPARATION
F.A.I. RT. 4-SEC. 91-4HB-2
UNION COUNTY
STATION 3039 + 92.98 (2)

DESIGNED: J.E. Stanton
CHECKED: E. J. Hillman
DRAWN: E. J. Hillman
EXAMINED: May 3, 1957
PASSED: [Signature]
APPROVED: [Signature]

BAR s & B s
BAR h6 R h6
BAR h1