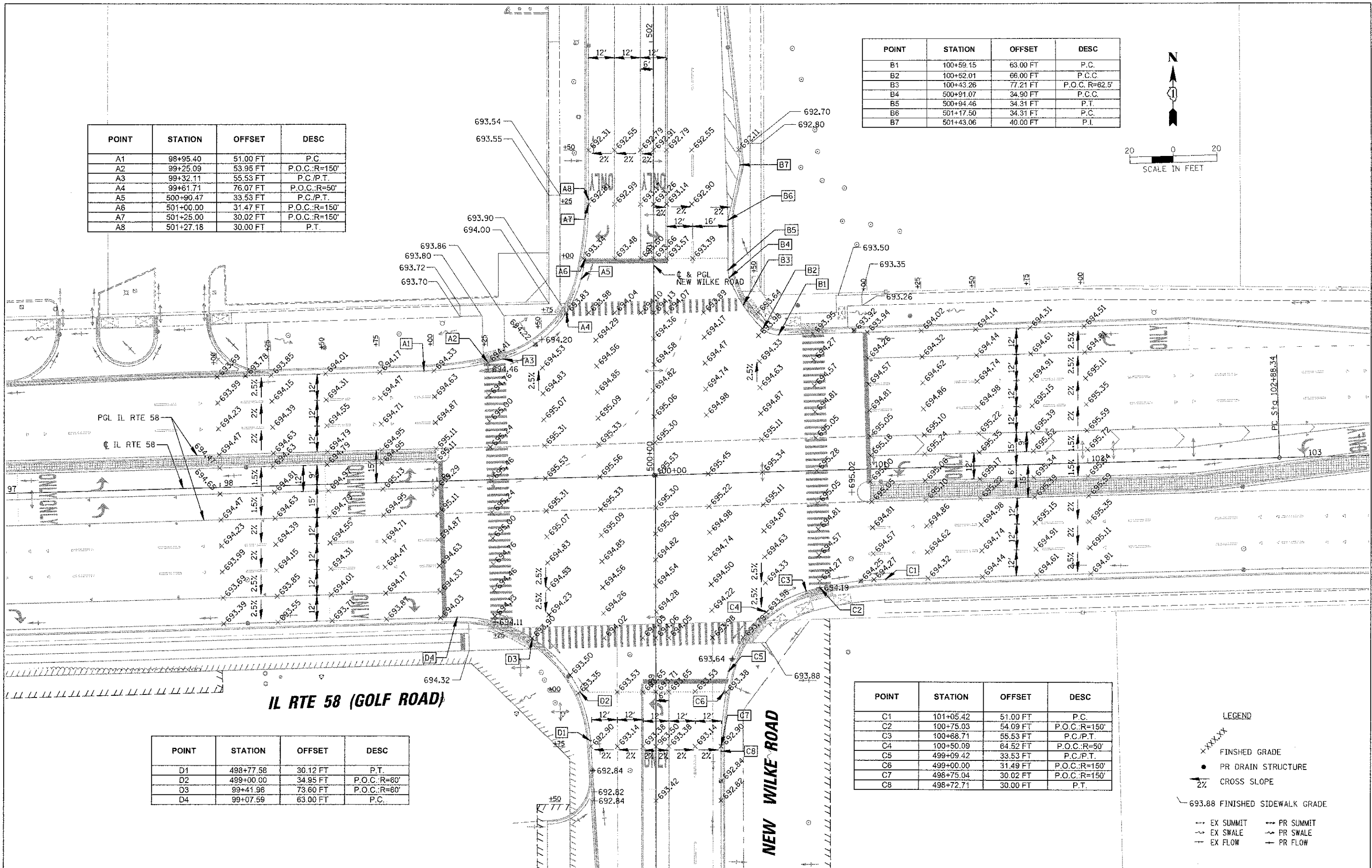
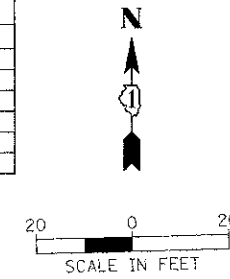


POINT	STATION	OFFSET	DESC
A1	98+95.40	51.00 FT	P.C.
A2	99+25.09	53.95 FT	P.O.C.:R=150'
A3	99+32.11	55.53 FT	P.C./P.T.
A4	99+61.71	76.07 FT	P.O.C.:R=50'
A5	500+90.47	33.53 FT	P.C./P.T.
A6	501+00.00	31.47 FT	P.O.C.:R=150'
A7	501+25.00	30.02 FT	P.O.C.:R=150'
A8	501+27.18	30.00 FT	P.T.

POINT	STATION	OFFSET	DESC
B1	100+59.15	63.00 FT	P.C.
B2	100+52.01	66.00 FT	P.C.C.
B3	100+43.26	77.21 FT	P.O.C.:R=62.5'
B4	500+91.07	34.90 FT	P.C.C.
B5	500+94.46	34.31 FT	P.T.
B6	501+17.50	34.31 FT	P.C.
B7	501+43.06	40.00 FT	P.I.



POINT	STATION	OFFSET	DESC
D1	498+77.58	30.12 FT	P.T.
D2	499+00.00	34.95 FT	P.O.C.:R=60'
D3	99+41.96	73.60 FT	P.O.C.:R=60'
D4	99+07.59	63.00 FT	P.C.

POINT	STATION	OFFSET	DESC
C1	101+05.42	51.00 FT	P.C.
C2	100+75.03	54.09 FT	P.O.C.:R=150'
C3	100+68.71	55.53 FT	P.C./P.T.
C4	100+50.09	64.52 FT	P.O.C.:R=50'
C5	499+09.42	33.53 FT	P.C./P.T.
C6	499+00.00	31.49 FT	P.O.C.:R=150'
C7	498+75.04	30.02 FT	P.O.C.:R=150'
C8	498+72.71	30.00 FT	P.T.

- LEGEND**
- xxx.xx FINISHED GRADE
 - PR DRAIN STRUCTURE
 - 2% CROSS SLOPE
 - 693.88 FINISHED SIDEWALK GRADE
 - EX SUMMIT --- PR SUMMIT
 - EX SWALE --- PR SWALE
 - EX FLOW --- PR FLOW