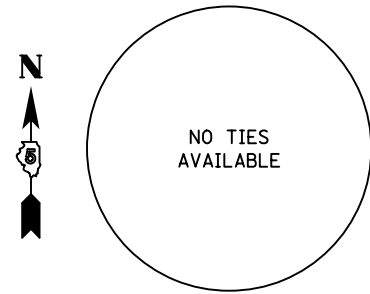
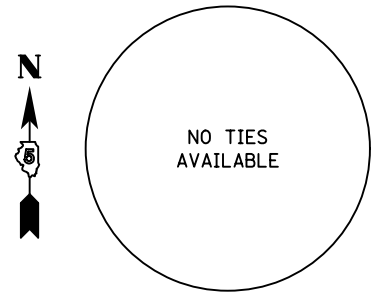


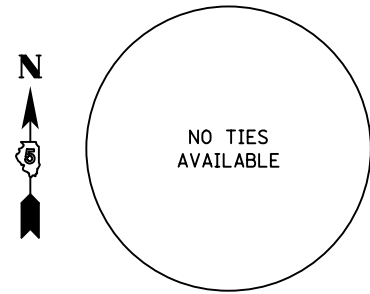
FAP RTE	SECTION	COUNTY	TOTAL SHEETS	SHEET NO.
729	•	VERMILION	298	53
FED. ROAD DIST. NO.		ILLINOIS FED. AID PROJECT		
• 36(W,RS-1) & 34Z-2(W,RS) CONTRACT #90939				



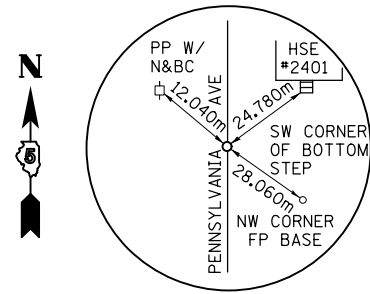
POT STATION 74+892.746 (EAST V.A. ENTRANCE)
N 384833.794, E 363693.343
PK NAIL



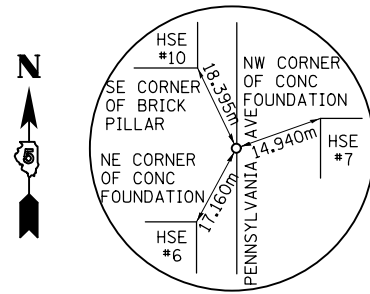
PI STATION 74+972.875 (EAST V.A. ENTRANCE)
N 384906.186, E 363658.991
PK NAIL



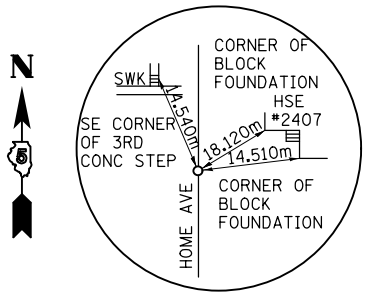
POT STATION 75+000.000 (EAST V.A. ENTRANCE)
N 384933.890, E 363658.672
PK NAIL



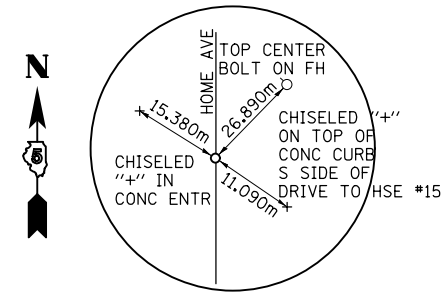
POT STATION 56+000.000 (PENNSYLVANIA AVE)
N 384937.147, E 363719.673
PK NAIL



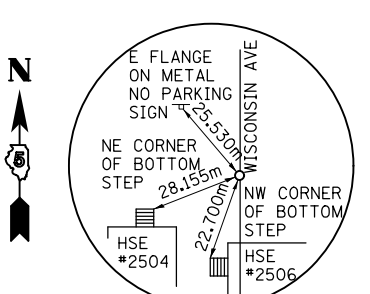
POT STATION 56+098.561 (PENNSYLVANIA AVE)
N 385035.696, E 363718.112
PK NAIL



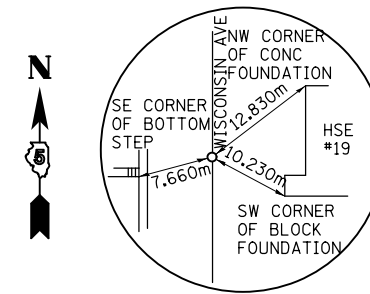
POT STATION 57+000.000 (HOME AVE)
N 384940.113, E 363775.221
PK NAIL



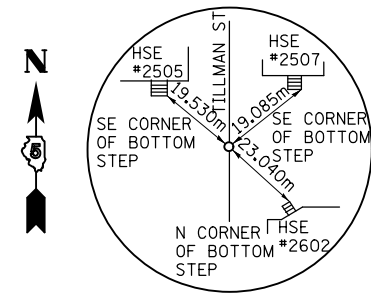
POT STATION 56+900.595 (HOME AVE)
N 384840.746, E 363777.950
PK NAIL



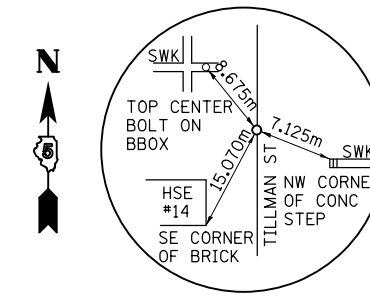
POT STATION 58+000.000 (WISCONSIN AVE)
N 384942.875, E 363826.386
PK NAIL



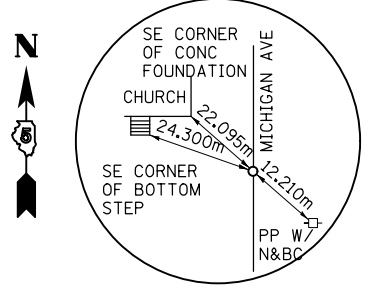
POT STATION 58+100.906 (WISCONSIN AVE)
N 385043.767, E 363824.710
PK NAIL



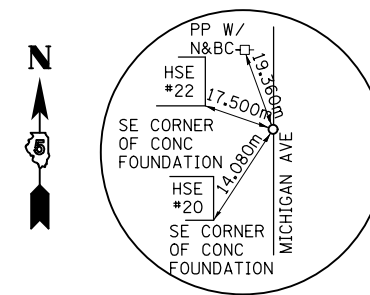
POT STATION 59+000.000 (TILLMAN ST)
N 384945.899, E 363882.205
PK NAIL



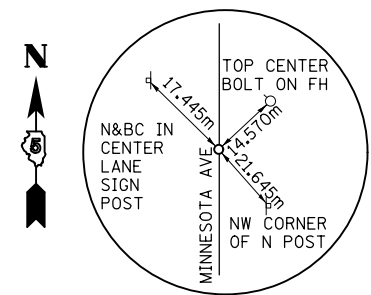
POT STATION 58+900.770 (TILLMAN ST)
N 384846.696, E 363884.546
PK NAIL



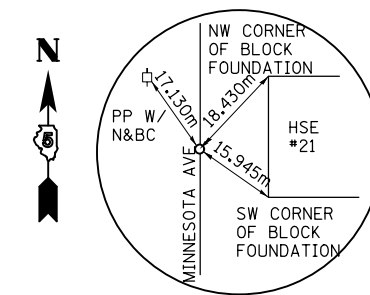
POT STATION 60+000.000 (MICHIGAN AVE)
N 384948.654, E 363933.070
PK NAIL



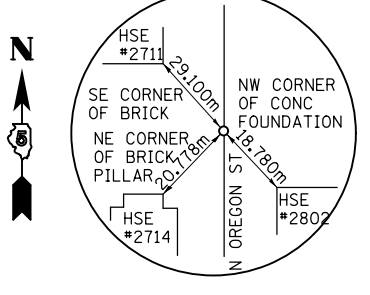
POT STATION 60+100.645 (MICHIGAN AVE)
N 385049.283, E 363931.267
PK NAIL



POT STATION 61+000.000 (MINNESOTA AVE)
N 384954.129, E 364034.163
PK NAIL



POT STATION 61+110.888 (MINNESOTA AVE)
N 385065.006, E 364032.605
PK NAIL



POT STATION 62+000.000 (N OREGON ST)
N 384959.603, E 364135.225
PK NAIL

NOTE: ALL COORDINATES ARE GROUND COORDINATES.

SIDESTREET
REFERENCE TIES

8/17/2012