

SEC 3, T 19 N, R 11 W, 2ND PM SEC 2, T 19 N, R 11 W, 2ND PM

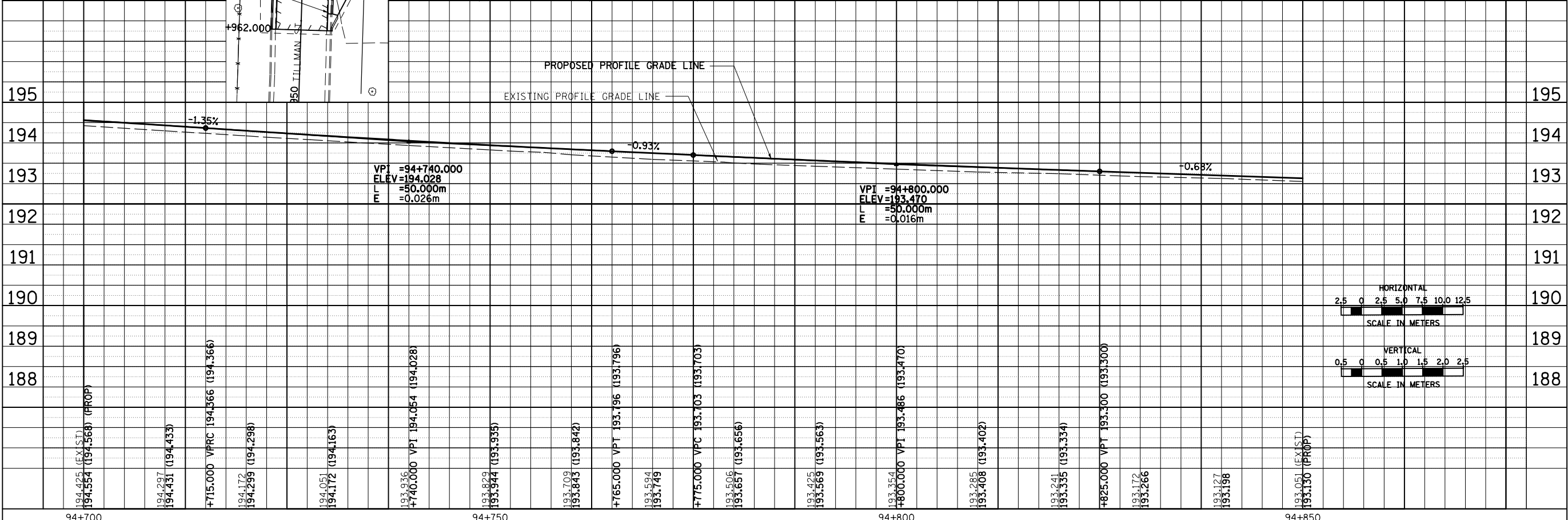
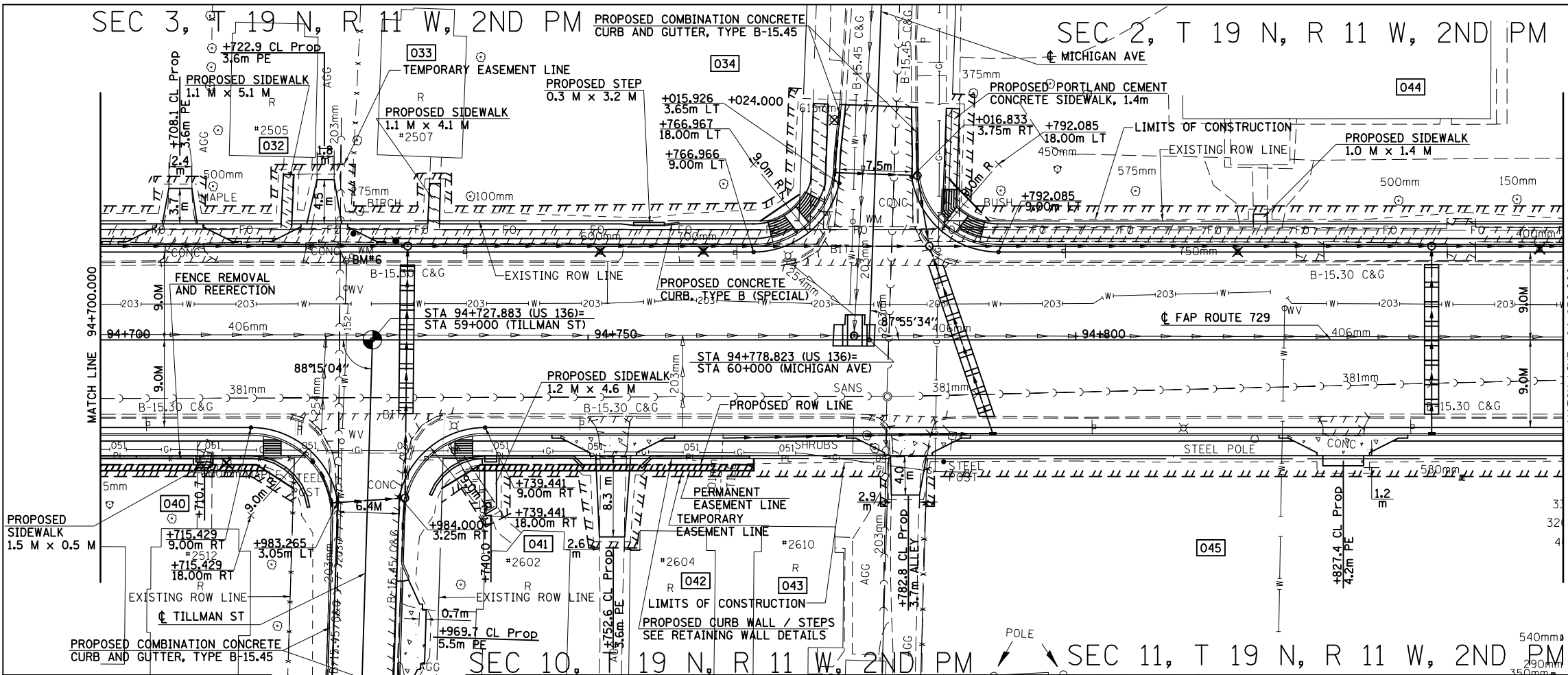
| F.A.P. RTE. | SECTION | COUNTY | TOTAL SHEETS | SHEET NO. |
|--|---------|---------------------------|--------------|-----------|
| 729 | * | VERMILION | 298 | 78 |
| STA. 94+700 TO STA. 94+850 | | ILLINOIS FED. AID PROJECT | | |
| • 36(W,RS-1) & 34Z-2(W,RS) CONTRACT #90939 | | | | |

| BY | DATE |
|----|------|
| | |
| | |

FINAL SURVEY PLOTTED NOTE BOOK TEMPLATE AREAS CHECKED

| BY | DATE |
|----|------|
| | |
| | |

ORIGINAL SURVEY PLOTTED NOTE BOOK TEMPLATE AREAS CHECKED



ROADWAY PLAN & PROFILE, FAP 729 (US136) STA 94+700 TO STA 94+850