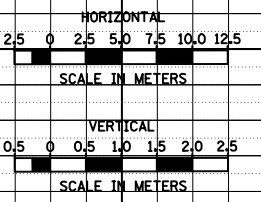
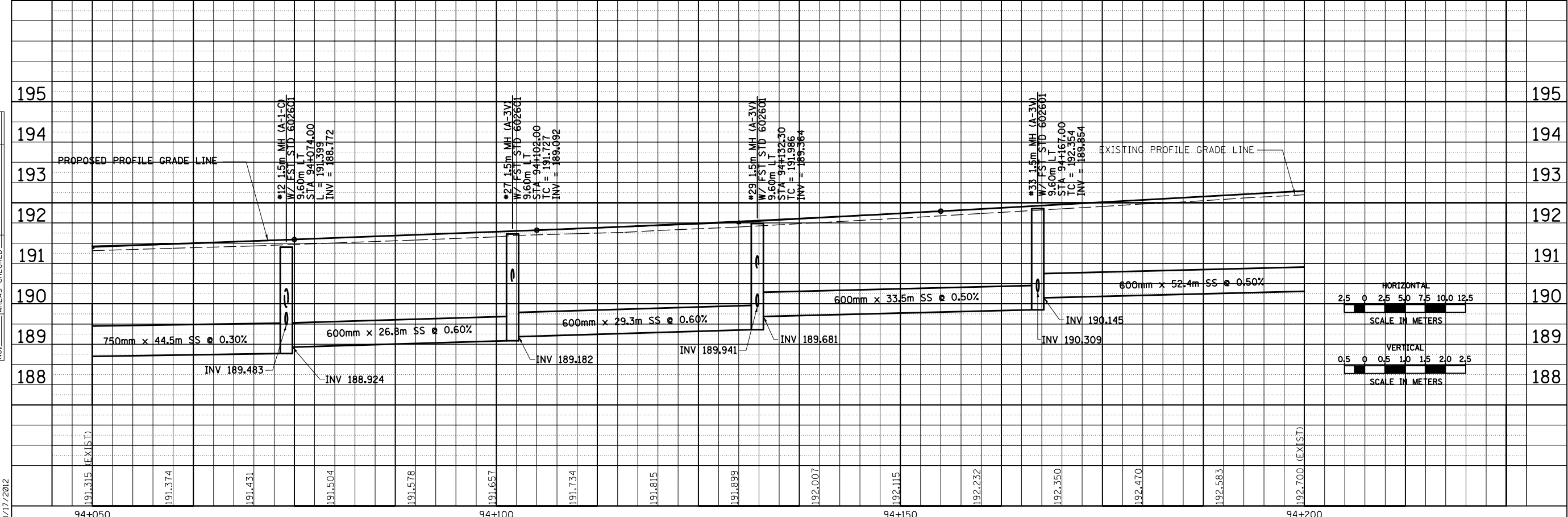
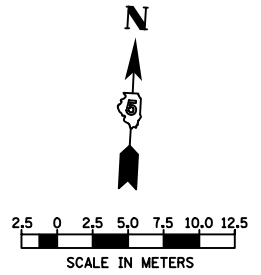
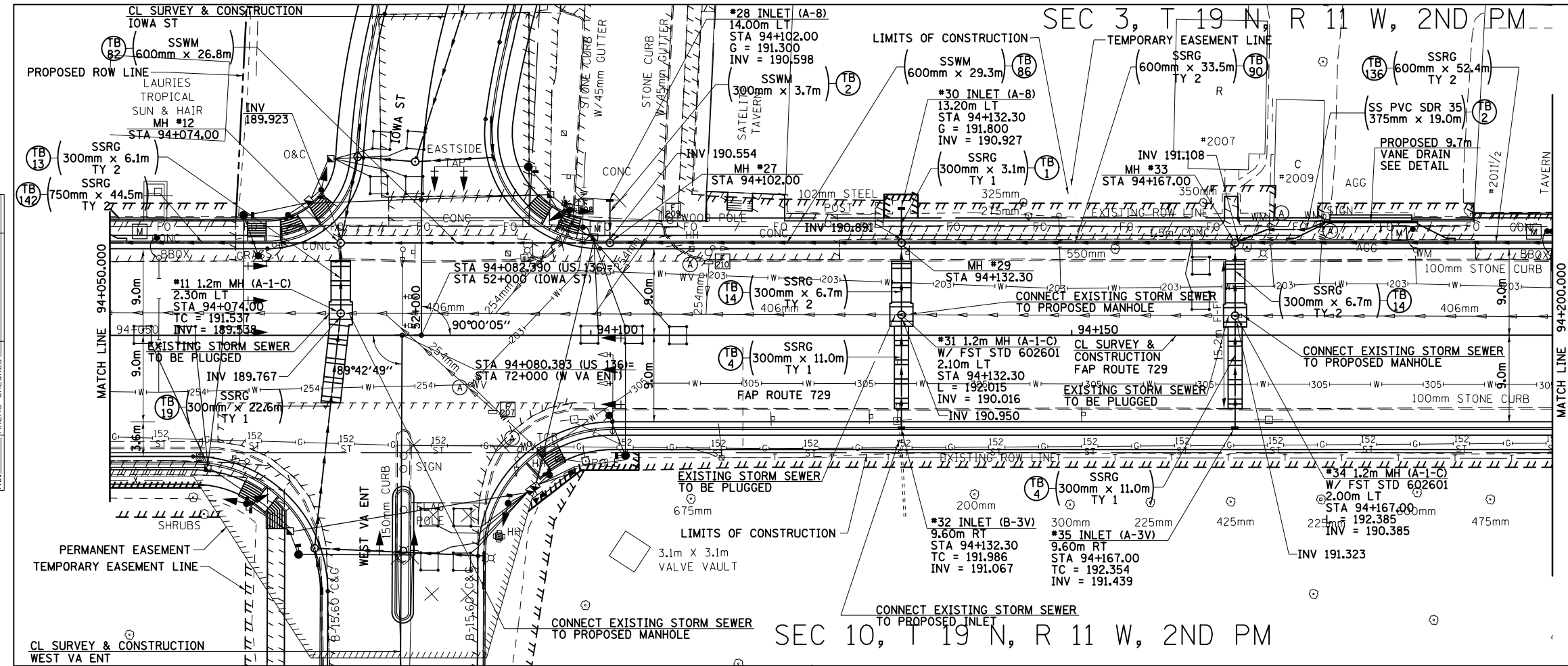


F.A.P. RTE.	SECTION	COUNTY	TOTAL SHEETS	SHEET NO.
729		VERMILION	298	88
STA. 94+050		TO STA. 94+200		
FED. ROAD DIST. NO.		ILLINOIS FED. AID PROJECT		
• 36(W,RS-1) & 34Z-2(W,RS) CONTRACT #90939				

BY	DATE
FINAL SURVEYED	
SURVEY PLOTTED	
NOTE BOOK TEMPLATE	
AREAS CHECKED	
NO.	

BY	DATE
ORIGINAL SURVEYED	
SURVEY PLOTTED	
NOTE BOOK TEMPLATE	
AREAS CHECKED	
NO.	



8/17/2012

c:\pwork\pwork\lock\j\d0313241\20003d002.dgn

DRAINAGE AND UTILITY PLAN & PROFILE, FAP 729 (US136) STA 94+050 TO STA 94+200