

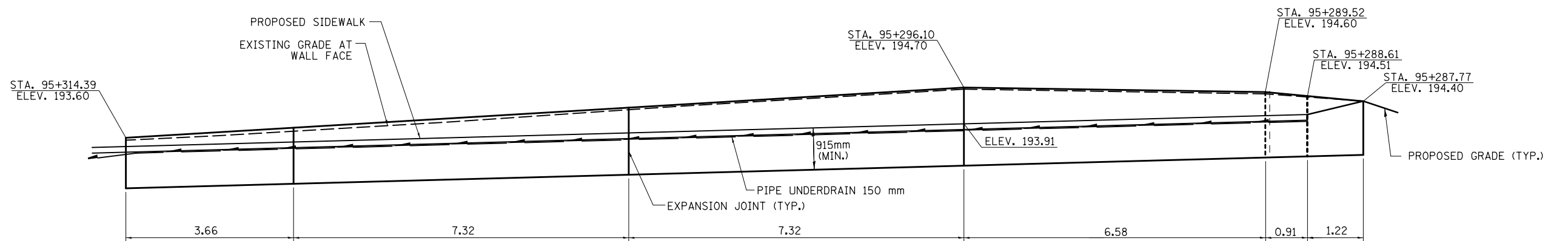
* CONNECT 150 mm PIPE UNDERDRAIN (SPECIAL) TO PROPOSED INLET AT STA. 95+350.09, 6.3 m RT

WALL 16 PLAN

SIDEWALK ELEVATION TABLE

STATION	ELEVATION
95+285	194.21
95+290	194.08
95+295	193.94
95+300	193.80
95+305	193.67
95+310	193.53
95+315	193.39

(PROPOSED OUTSIDE EDGE OF SIDEWALK ELEVATIONS)



WALL 16 ELEVATION

- NOTES:
- SEE SHEET 2 FOR WALL, STEP, AND EXPANSION JOINT DETAILS
 - ALL DIMENSIONS ARE IN METERS (m) EXCEPT AS NOTED.
 - U.N.O. = UNLESS NOTED OTHERWISE

FILE NAME =	USER NAME = ceerlockjd	DESIGNED -	REVISED -	STATE OF ILLINOIS DEPARTMENT OF TRANSPORTATION	WALL 16 PLAN AND ELEVATION			F.A.P. RTE.	SECTION	COUNTY	TOTAL SHEETS	SHEET NO.
ce:\pwork\pwork\ceerlockjd\0313241\0909339\RetainWallDetails.dgn		DRAWN -	REVISED -		729	36(W,RS-1) & 34Z-2(W,RS)	VERMILION	271	152			
PLOT SCALE = 2.54 m / in.		CHECKED -	REVISED -		CONTRACT NO. 90939							
PLOT DATE = 8/17/2012		DATE -	REVISED -		SCALE: 1:50	SHEET NO. 19 OF 19 SHEETS	STA.	TO STA.	ILLINOIS FED. AID PROJECT			