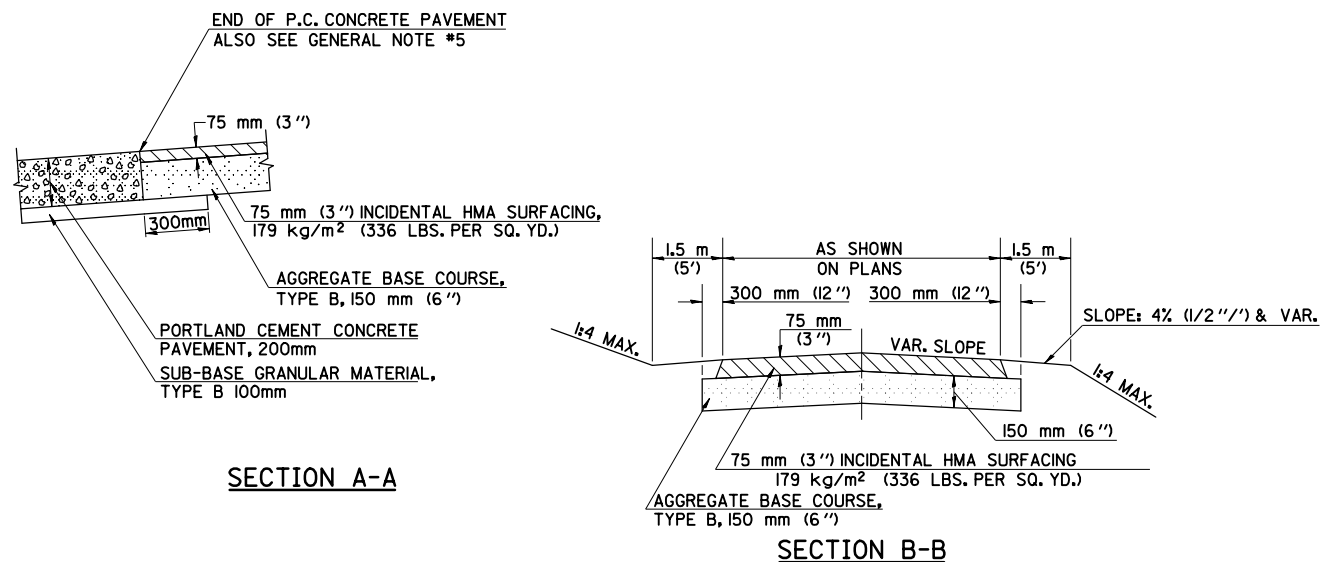
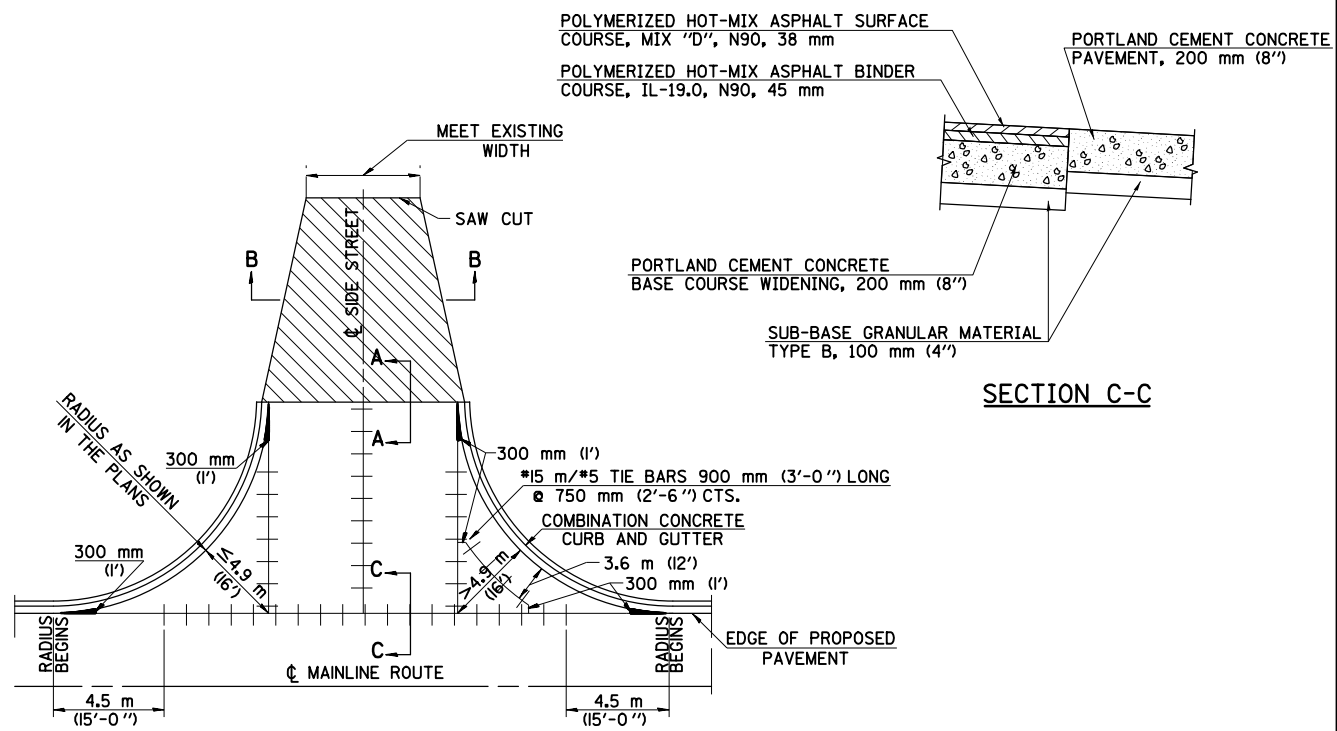


## DETAIL OF INTERSECTING SIDE STREETS



SECTION A-A

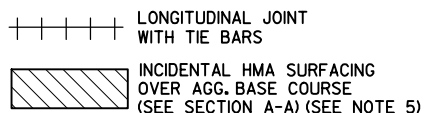
SECTION B-B



SECTION C-C

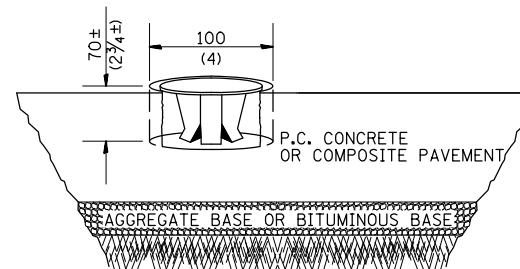
- ALL INTERSECTING SIDE STREETS SHALL BE CONSTRUCTED IN ACCORDANCE WITH THIS DETAIL EXCEPT THOSE NOTED IN THE PLANS.
- SAWED LONGITUDINAL JOINTS WITH TIE BARS WILL BE ALLOWED ALONG THE CENTERLINE ONLY WHEN THE STREET RETURN IS POURED FULL WIDTH.
- #4 TIE BARS MAY BE USED WHEN THE P.C. CONCRETE PAVEMENT THICKNESS IS LESS THAN 225 mm (9 INCHES).
- THE MATERIAL WITHIN THE WIDTH TRANSITION AREA MAY BE DIFFERENT THAN SHOWN ABOVE. THE WIDTH TRANSITION MAY NOT BE REQUIRED AT ALL LOCATIONS.
- SHADED AREAS SHALL BE POURED MONOLITHIC WITH ADJACENT COMBINATION CONCRETE CURB AND GUTTER. THIS WORK WILL BE MEASURED AND INCLUDED IN THE CONTRACT UNIT PRICE PER SQUARE METER (YARD) FOR PORTLAND CEMENT CONCRETE PAVEMENT OF THE THICKNESS SPECIFIED IN THE PLANS.
- SAWED CONTRACTION JOINTS, AS SHOWN IN STANDARD 420001, SHALL BE REQUIRED AT 12.2 m (MIN, SPACING 6.1 m) WHEN THE LENGTH OF THE RETURN EXCEEDS 12.2 m

### LEGEND



## PERMANENT SURVEY MARKER (SPECIAL)

TO BE USED IN "NEW" RIGID OR COMPOSITE PAVEMENT FOR SETTING EXISTING CENTERLINE CONTROL POINTS.



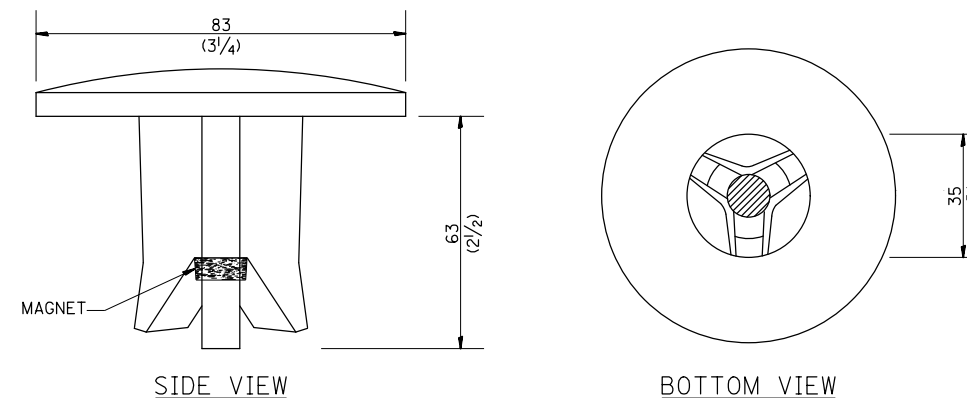
### GENERAL NOTES

- WORK ON THIS ITEM SHALL NOT START UNTIL THE FINAL SURFACE IS COMPLETED.
- THE ALUMINUM TABLET (FORKED) SHALL REST UPON THE BOTTOM OF THE 100 mm (4'') CORE HOLE. IF THE HOLE IS TOO DEEP, EPOXY GROUT MUST BE USED TO DECREASE THE DEPTH AND ALLOWED TO HARDEN BEFORE PROCEEDING.
- THE ALUMINUM TABLET SHALL BE ANCHORED IN THE 100 mm (4'') DIAMETER HOLE IN THE NEW PAVEMENT WITH TWO-COMPONENT EPOXY CONFORMING TO APPLICABLE PORTIONS OF ARTICLE 1025.01 (725.01) OF THE STANDARD SPECIFICATIONS.
- THE 100 mm (4'') CORE HOLE SHALL BE SUBJECT TO THE APPROVAL OF THE ENGINEER.
- THE CONTRACT PRICE, EACH, FOR SURVEY MARKER, TYPE 2 (SPECIAL) SHALL BE PAYMENT IN FULL FOR FURNISHING THE ALUMINUM TABLET AND ALL LABOR AND MATERIAL TO SET THE MARKER IN PLACE, AS SPECIFIED, INCLUDING CORING THE NEW PAVEMENT.
- ALL SURVEY MARKERS, TYPE 2 (SPECIAL) SHALL BE PLACED  $\pm 6$  mm (1/4'') BELOW THE FINAL SURFACE.

### SPECIFICATIONS FOR ALUMINUM TABLET (FORKED)

ALUMINUM TABLET (FORKED) FOR USE WITH "SURVEY MARKER, TYPE 2, (SPECIAL)" SHALL BE AS SHOWN ON THE DETAIL FOR THE 83 mm (3 1/4'') CONVEX SURVEY TABLET WITH ILLINOIS DEPARTMENT OF TRANSPORTATION LOGO. THIS LOGO SHALL PROVIDE FOR LETTERS RECESSED INTO THE SURFACE A MINIMUM OF 0.8 mm (1/32'') FOR EASY AND LONG-TERM LEGIBILITY. THE ALUMINUM TABLET SHALL BE PRODUCED BY THE PROCESS OF ORBITAL FORGING TO PRODUCE A HIGH-STRENGTH AND DURABLE MARKER CAP WHICH WILL NOT CHIP OR BREAK AND PROVIDE A SMOOTH FINISH FOR STAMPING OF DATA IN THE FIELD. THE ALUMINUM TABLET SHALL BE DESIGNED NOT TO TURN OR ROTATE. THREE PRONGS ON A 63 mm (2 1/2'') STEM SHALL BE SUCH THAT THE ALUMINUM TABLET CANNOT BE EASILY REMOVED.

COMPOSITION: ALUMINUM 92-93%; MAGNESIUM 6.5-7.5%.  
STRENGTH: YIELD--131-145 MPa (19,000-21,000 PSI);  
TENSIL--262-303 MPa (38,000-44,000 PSI); ELONGATION--10-15%  
[IN 50 mm (2'')]. SPECIFICATIONS: ALLOY 535.0; QQ-A-601ES.  
NO EXCEPTIONS.



SIDE VIEW

BOTTOM VIEW

DIMENSIONS SHOWN SHALL BE EXACT, OTHERS MAY VARY, BUT SHALL BE SHOWN ON SHOP DRAWINGS.

All dimensions are in millimeters (Inches) unless otherwise shown.

F.A.P. RTE.	SECTION	COUNTY	TOTAL SHEETS	SHEET NO.
729		VERMILION	298	158
FED. ROAD DIST. NO.		ILLINOIS FED. AID PROJECT		

• 36(W,RS-1) & 34Z-2(W,RS)  
CONTRACT #90939

REVISIONS		ILLINOIS DEPARTMENT OF TRANSPORTATION
NAME	DATE	
		<p style="text-align: center;">SPECIAL DETAILS</p> <p style="text-align: right;">DRAWN BY CT CHECKED BY AWM</p> <p style="text-align: left;">DATE AUGUST 2003</p>

DESIGNED			REVISIONS		
NAME	DATE		NAME	DATE	
AWH	8/17/91		G.A.M.	11-95	
PEK	8/17/91		D.L.P.	10-96	
CADD NO.	D-1.05				

8/17/2012

c:\pw\_work\pwidot\ceer-lock\jd\0313241\20003z001.dgn