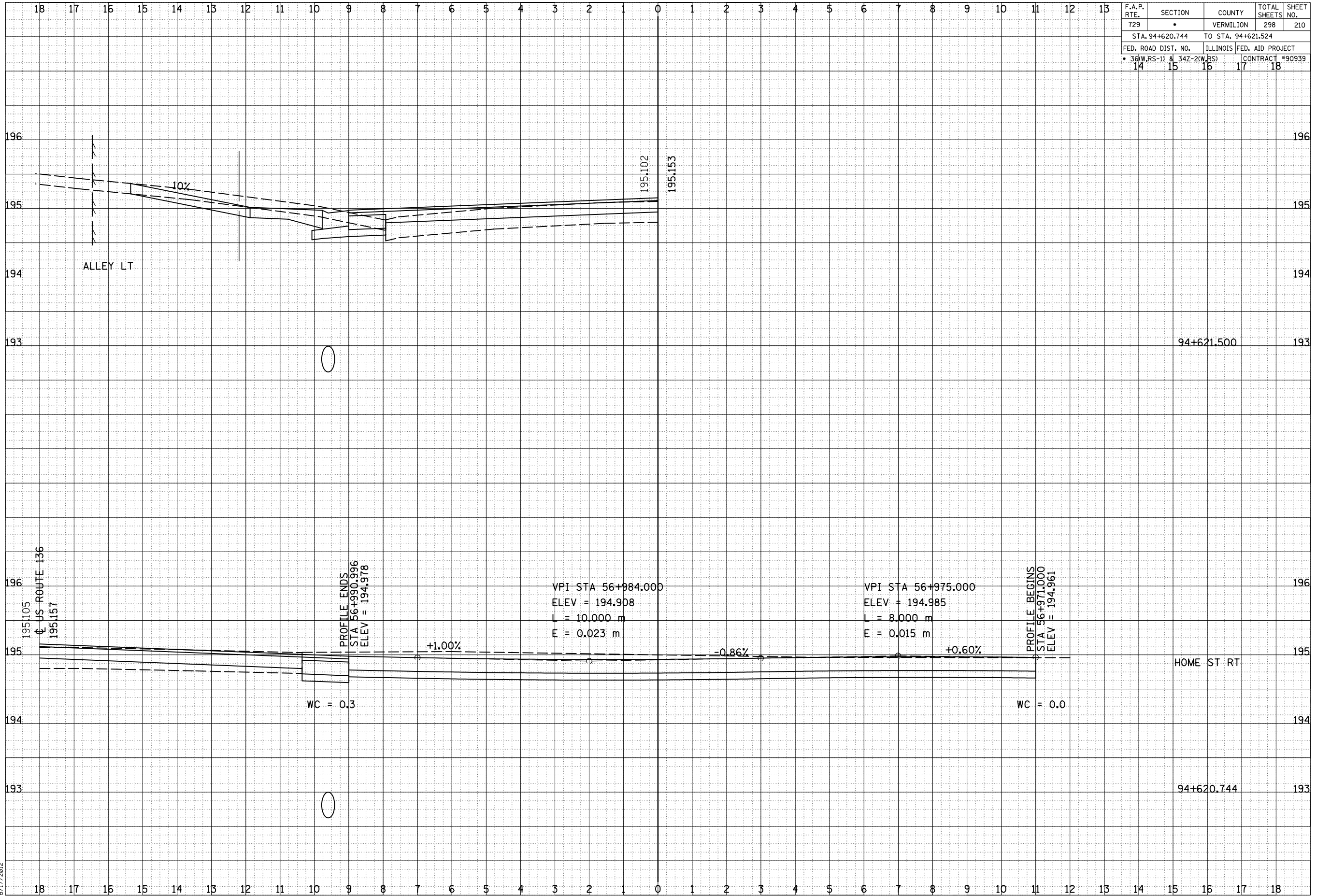


F.A.P. RTE.	SECTION	COUNTY	TOTAL SHEETS	SHEET NO.
729	*	VERMILION	298	210
STA. 94+620.744 TO STA. 94+621.524				
FED. ROAD DIST. NO.	ILLINOIS FED. AID PROJECT			
* 36(W,RS-1) & 34Z-2(W,RS)	CONTRACT #90939			
14	15	16	17	18

BY	DATE
FINISH SURVEYED	SURVEYED
NOTE BOOK	PLOTTED
NO.	AREAS CHECKED



BY	DATE
ORIGINAL SURVEYED	SURVEYED
NOTE BOOK	PLOTTED
NO.	AREAS CHECKED

8/17/2012

c:\pwork\pwork\cearlock\j\d0313241\20003xshs.dgn