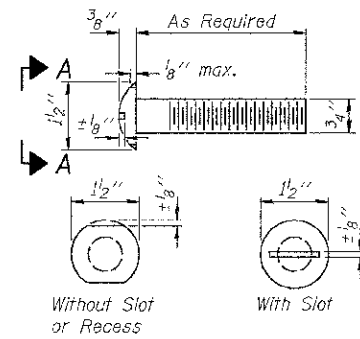
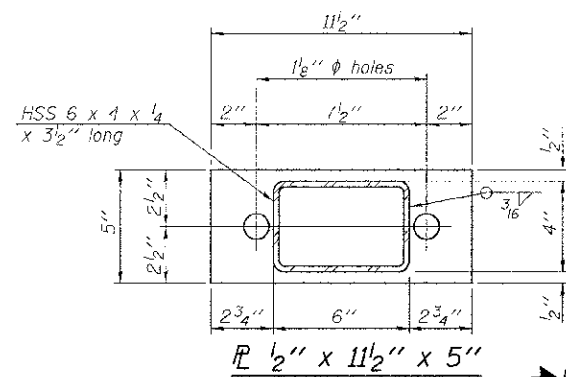


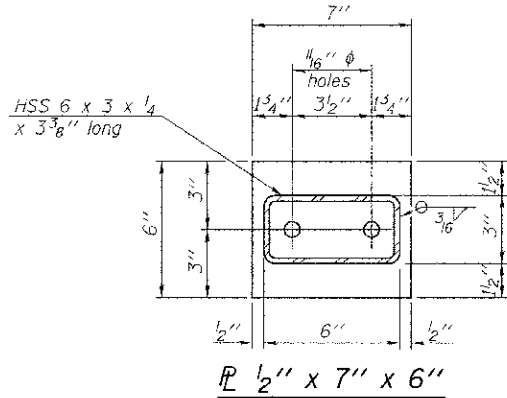
FOR RAIL POST SPACING SEE SH.#7 OF 17



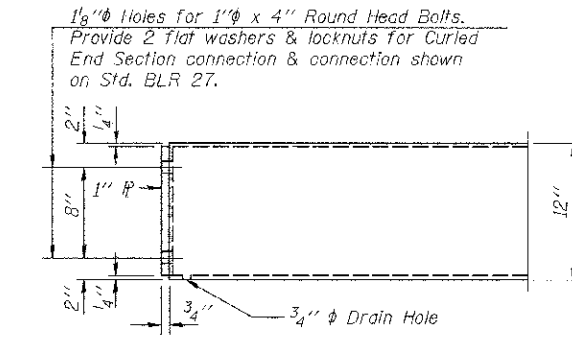
VIEW A-A
ROUND HEAD BOLT



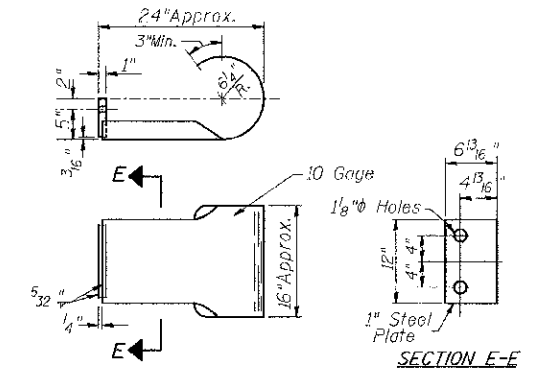
SECTION B-B
P 1/2" x 11 1/2" x 5"



SECTION C-C
P 1/2" x 7" x 6"

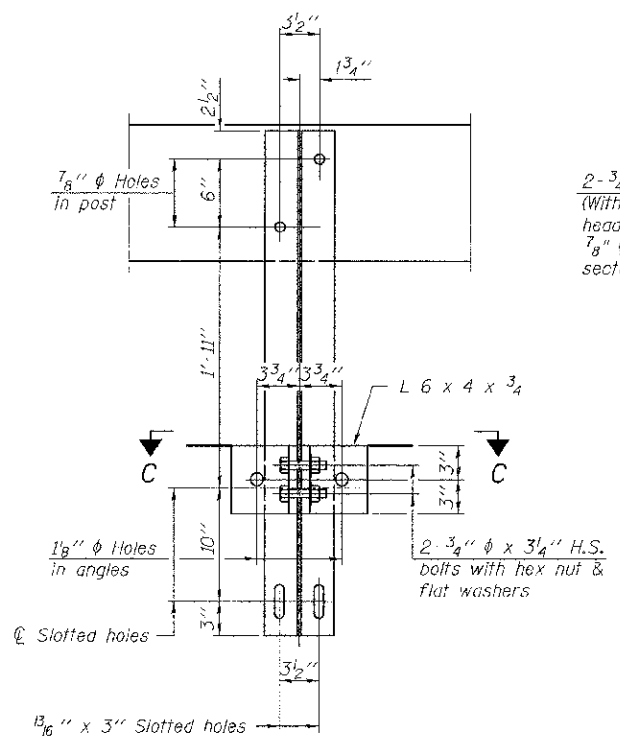


END OF RAIL DETAILS

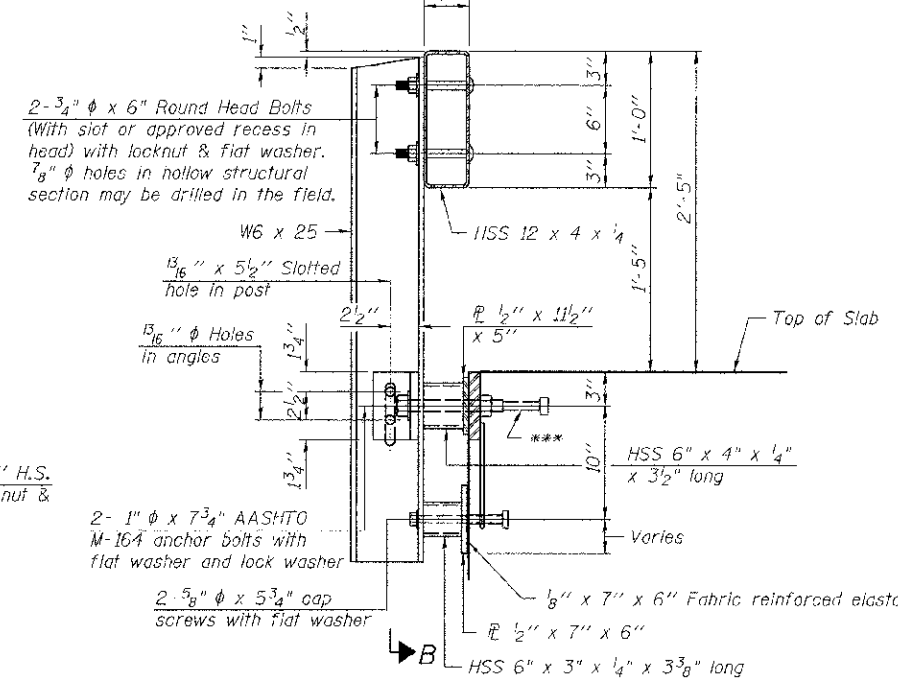


CURLED END SECTION

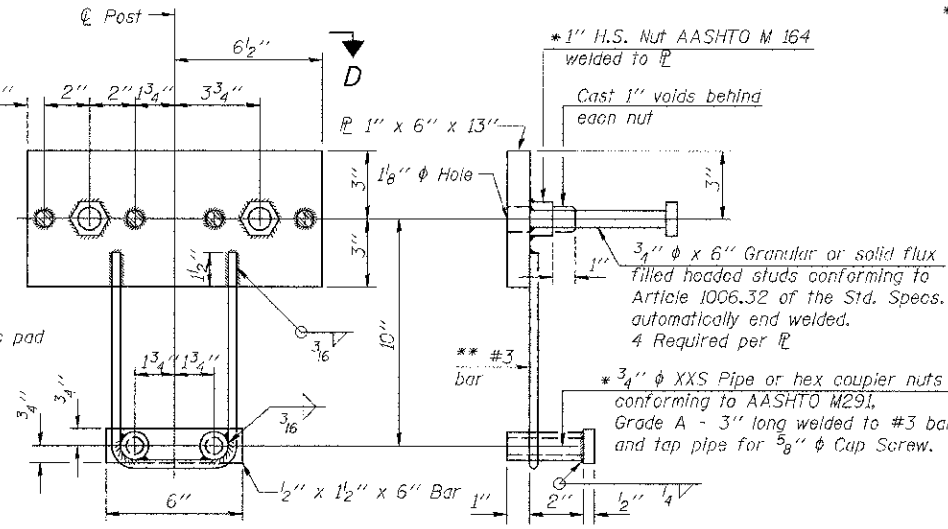
(2 Req'd) Cost Included with Steel Railing, Type S-1.
Terminal Markers - Direct Applied shall be placed on end of each Curled End Section. (S.W. and N.E. Corners)



SECTION B-B



SECTION AT RAILING POST



ANCHOR DEVICE

* Threaded areas shall be plugged or blocked off during casting of beam.

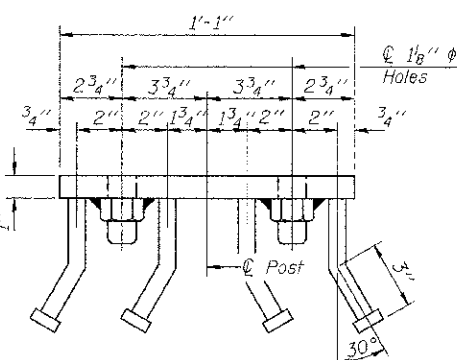
NOTES

All field drilled holes shall be coated with an approved zinc rich paint before erection.

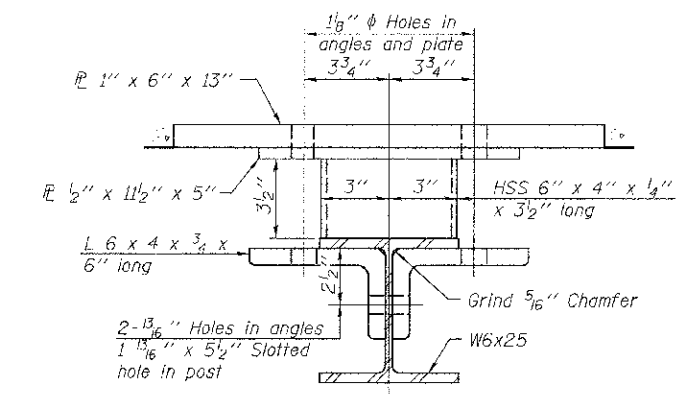
For multi-span bridges, sufficient 1/4" x 6" x 1'-2" galvanized steel shims shall be provided to align rail between adjacent spans. Cost included with Steel Railing, Type S-1.

All steel rail elements shall be galvanized according to Article 509.05 of the Standard Specifications.

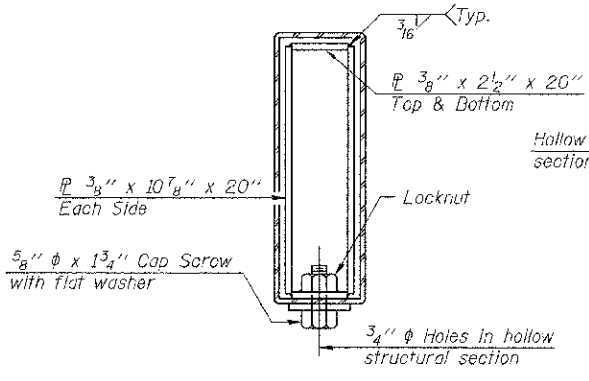
*** The studs of the anchor devices shall be placed below the top reinforcement bars and the outermost longitudinal reinforcement bar shall be placed directly above the studs of the rail post anchor device.



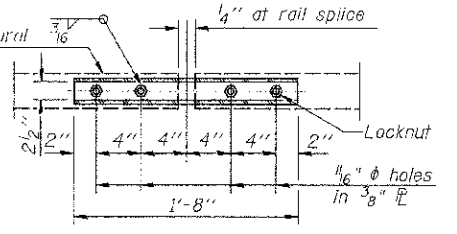
VIEW D-D



SECTION C-C



SECTIONS AT RAIL SPLICE



PLAN-BOTT. SPLICE TYPICAL

** Whenever the lower insert assemblies interfere with strand locations, the #3 bars shall be cut and adjusted in order to allow raising or lowering of the lower inserts. Maximum adjustment not to exceed 1/2".

BILL OF MATERIAL

Item	Unit	Quantity
Steel Railing, Type S-1	F001	424

STEEL RAILING, TYPE S-1
C.H. 2 OVER SUGAR CREEK
SECTION 07-00073-00-BR
SCHUYLER COUNTY
STATION 20+00.00

SHEET NO.	ROUTE NO.	SECTION	COUNTY	TOTAL SHEETS	SHEET NO.
9	CH 2	07-00073-00-BR	SCHUYLER	35	15
17 SHEETS		SN 085-3056		CONTRACT NO. 93584	
	FED. ROAD DIST. NO. 7	ILLINOIS		FED. AID PROJECT BR5-0455(107)	