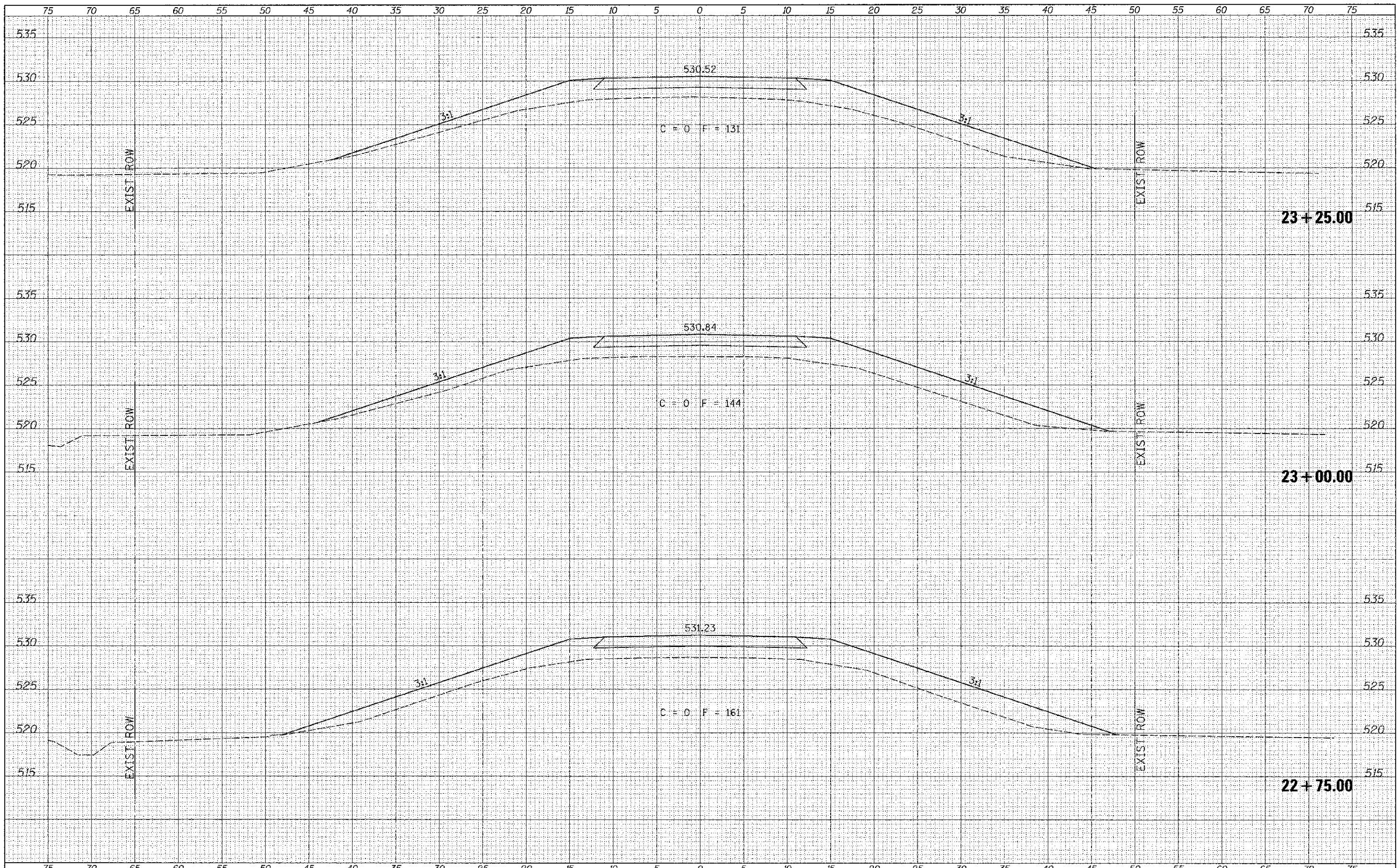


DATE	
BY	
DESIGNED	
DRAWN	
CHECKED	
DATE	
REVISIONS	
NO.	
AREA CHECKED	
NO.	
NOTE BOOK	
NO.	
AREA CHECKED	
NO.	
NOTE BOOK	
NO.	
AREA CHECKED	
NO.	

DATE	
BY	
DESIGNED	
DRAWN	
CHECKED	
DATE	
REVISIONS	
NO.	
AREA CHECKED	
NO.	
NOTE BOOK	
NO.	
AREA CHECKED	
NO.	
NOTE BOOK	
NO.	
AREA CHECKED	
NO.	



FILE NAME =	USER NAME = othomas	DESIGNED -	REVISED -	SCHUYLER COUNTY COUNTY HIGHWAY 2 OVER SUGAR CREEK	CROSS SECTIONS			F.A.S. RTE.	SECTION	COUNTY	TOTAL SHEETS	SHEET NO.
W:\Bridge\2998 - Schuyler\2998\ksh\body1		DRAWN -	REVISED -		455	07-00073-00-BR	SCHUYLER	35	32			
XS_SHEET	PLOT SCALE = 5.00000' / 1" =	CHECKED -	REVISED -		SCALE: 1"=5' SHEET 9 OF 12 SHEETS STA. 22+75.00 TO STA. 23+25.00			CONTRACT NO. 03584				
	PLOT DATE = 7/24/2012	DATE -	REVISED -		FED. ROAD DIST. NO. 7 [ILLINOIS] FED. AID PROJECT BR5-0455007							