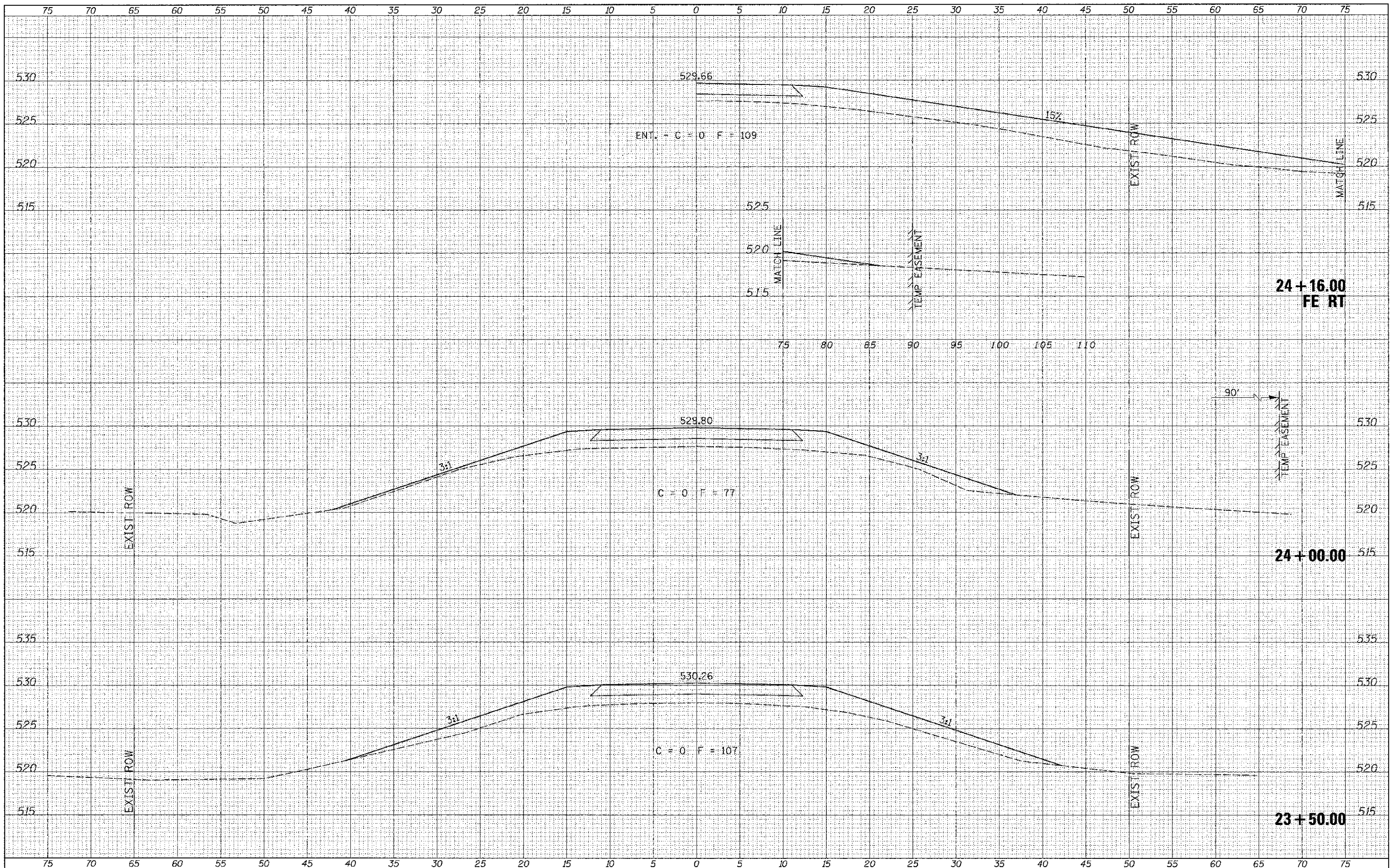


DATE	
BY	
FINAL SURVEY	
REVISIONS	
NOTE BOOK	
AREAS CHECKED	
NO.	

DATE	
BY	
ORIGINAL SURVEY	
REVISIONS	
NOTE BOOK	
AREAS CHECKED	
NO.	



FILE NAME = W:\Bridge\2198 - Schuyler\2198\ss1\ss1.dgn  
 X.S. SHEET

USER NAME = orthomas	DESIGNED -	REVISED -
PLOT SCALE = 1/8" = 1' - 0"	DRAWN -	REVISED -
PLOT DATE = 7/24/2012	CHECKED -	REVISED -
	DATE -	REVISED -

**SCHUYLER COUNTY  
 COUNTY HIGHWAY 2  
 OVER SUGAR CREEK**

**CROSS SECTIONS**  
 SCALE: 1"=5' SHEET 10 OF 12 SHEETS STA. 23+50.00 TO STA. 24+16.00

F.A.S. R/L	SECTION	COUNTY	TOTAL SHEETS	SHEET NO.
455	07-00073-00-BR	SCHUYLER	35	33
				CONTRACT NO. 93534
FED. ROAD DIST. NO. 7 (ILLINOIS) FED. AID PROJECT BR5-0455(107)				