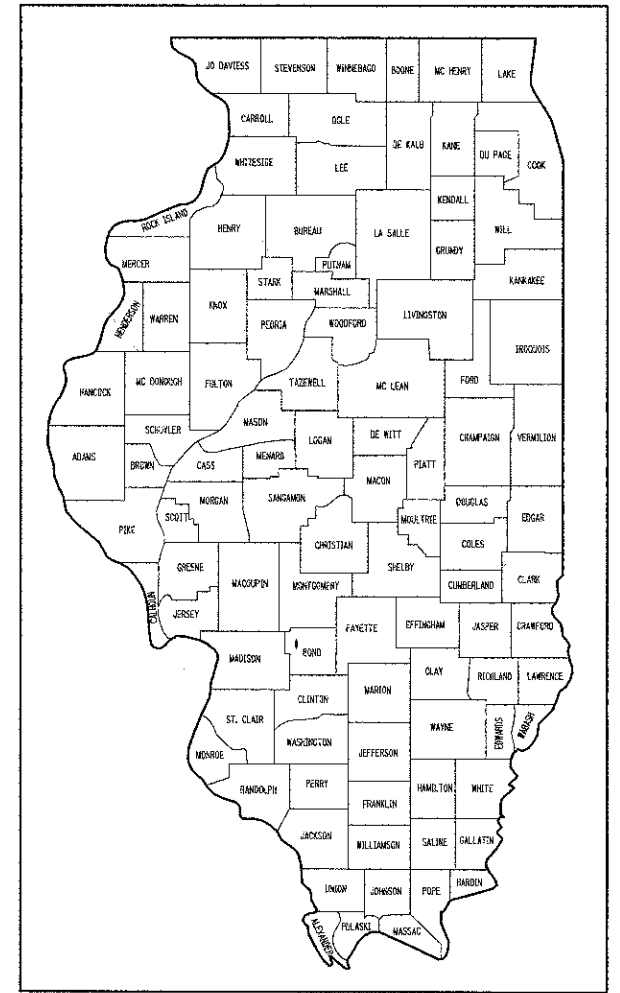


FAS RTE	SECTION	COUNTY	TOTAL SHEETS	SHEET NO.
779	07-00085-00-BR	BOND	41	1
SN 003-3053			CONTRACT NO. 97508	
ILLINOIS		FEDERAL AID PROJECT		

# MAJOR BRIDGE PROGRAM

## DETAIL PLANS FOR FAS 779 (CH 21 - N. POKEY ROAD) OVER TRIBUTARY TO SHOAL CREEK SECTION 07-00085-00-BR BOND COUNTY PROJECT NO. BRS-0779(104) JOB NO. C-98-304-09



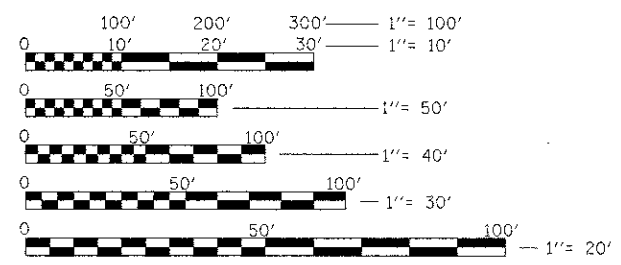
LOCATION OF SECTION INDICATED THUS: [Symbol]

### INDEX OF SHEETS

1. COVER SHEET
2. GENERAL NOTES
3. SUMMARY OF QUANTITIES
4. SCHEDULES
- 5-6. TYPICAL ROADWAY SECTIONS
- 7-8. PLAN & PROFILE PROPOSED ROADWAY
- 9-10. ROADWAY DETAILS
11. ENTRANCE DETAILS
- 12-13. PLAN & PROFILE EXISTING ROADWAY & REMOVALS
14. DETOUR PLAN
15. TRAFFIC CONTROL PLAN - POST PHASE 1
16. EROSION CONTROL PLAN
- 16A. TREE PLANTING PLAN
17. GENERAL PLAN AND ELEVATION
18. GENERAL DATA
19. SUPERSTRUCTURE
20. 21" x 48" P.P.C. DECK BEAM
21. 21" x 48" P.P.C. DECK BEAM DETAILS
22. PILE BENT ABUTMENT
23. PIER DETAILS
24. STEEL RAILING, TYPE SM WITH HOT-MIX ASPHALT WEARING SURFACE
25. HP PILE DETAILS
26. SOIL BORING LOGS
- 27-41. CROSS SECTIONS EXISTING & PROPOSED ROADWAY

### HIGHWAY STANDARDS

- |           |  |
|-----------|--|
| 000001-06 | STANDARD SYMBOLS, ABBREVIATIONS AND PATTERNS                               |
| 280001-06 | TEMPORARY EROSION CONTROL SYSTEMS  |
| 515001-03 | NAME PLATE FOR BRIDGES   |
| 542301-03 | PRECAST REINFORCED CONCRETE FLARED END SECTION                             |
| 630001-10 | STEEL PLATE BEAM GUARDRAIL   |
| 630201-06 | PCC/HMA STABILIZATION AT STEEL PLATE GUARDRAIL                             |
| 630301-05 | SHOULDER WIDENING FOR TYPE 1, (SPECIAL) GUARDRAIL TERMINALS                |
| 631032-07 | TRAFFIC BARRIER TERMINAL, TYPE 6A  |
| 635006-03 | REFLECTOR AND TERMINAL MARKER PLACEMENT                                    |
| 701006-03 | OFF-RD OPERATIONS, 2L, 2W, 15' TO 24" FROM PAVEMENT EDGE                   |
| 701306-03 | LANE CLOSURE, 2L, 2W, SLOW MOVING OPERATIONS DAY ONLY, FOR SPEEDS >45 MPH. |
| 701901-02 | TRAFFIC CONTROL DEVICES  |



FULL SIZE PLANS HAVE BEEN PREPARED USING STANDARD ENGINEERING SCALES. REDUCED SIZED PLANS WILL NOT CONFORM TO STANDARD SCALES. IN MAKING MEASUREMENTS ON REDUCED PLANS THE ABOVE SCALES MAY BE USED.

### DESIGN CLASSIFICATION

MAJOR COLLECTOR (NON-URBAN) ADT = 750-2,000  
 CURRENT ADT = 1,350 (2010)  
 DESIGN ADT = 1,800 (2032)  
 DESIGN SPEED = 50 MPH

### UTILITIES:

CALL J.U.L.I.E. BEFORE YOU DIG  
 1-800-892-0123 OR 811

### TELEPHONE:

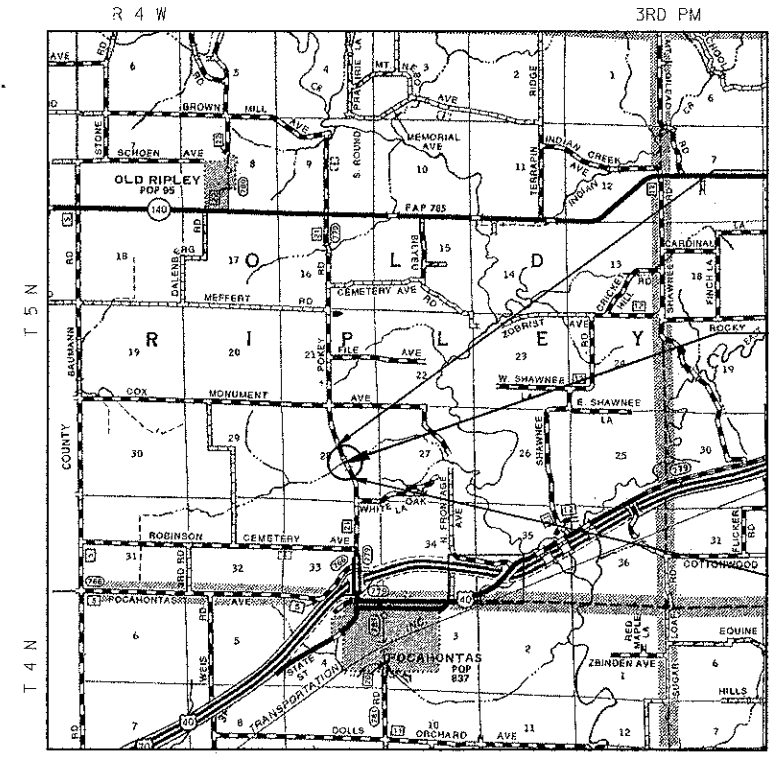
FRONTIER COMMUNICATIONS  
 ALTAMONT, IL. 62411  
 (618) 483-6205

### ELECTRIC:

SOUTHWESTERN ELECTRIC COOP  
 HIGHLAND, IL. 62249  
 (618) 664-1025

### WATER:

BOND/MADISON WATER CO.  
 208 ACADEMY STREET  
 POCAHONTAS, IL. 62275  
 (618) 659-0900



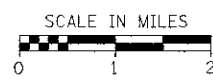
LOCATION MAP

NET LENGTH OF PROJECT = 2,950 FEET = 0.559 MILES

SECTION 07-00085-00-BR  
 BEGINS STA 16+50

**PROJECT LOCATION**  
 EXISTING S.N. 003-3023  
 PROPOSED STRUCTURE NO. 003-3053 STATION 27+00  
 THREE SIMPLE SPANS (40' EACH), PRECAST PRESTRESSED  
 CONCRETE DECK BEAMS (21") ON SPILL THRU PILE BENT  
 ABUTMENTS AND PILE BENT PIERS MEASURING 120'-0" B-B  
 OF THE ABUTMENTS WITH A 36'-0" CLEAR ROADWAY WIDTH.

SECTION 07-00085-00-BR  
 ENDS STA 46+00



STATE OF ILLINOIS DEPARTMENT OF TRANSPORTATION	
APPROVED	<u>Sept 6</u> 20 <u>12</u> <i>James D. Z...</i> COUNTY ENGINEER
PASSED	<u>9-13</u> 20 <u>12</u> <i>J. Blain</i> DISTRICT 8 ENGINEER OF LOCAL ROADS AND STREETS
RELEASING FOR BID BASED UPON LIMITED REVIEW	<u>9-13</u> 20 <u>12</u> <i>Omer Osman</i> OMER OSMAN, P.E. DEPUTY DIRECTOR OF HIGHWAYS REGION 5 ENGINEER



*Larry D. Gowler Jr.* DATE: 9/7/12  
 LARRY D. GOWLER JR.  
 REGISTERED PROFESSIONAL  
 ENGINEER IN ILLINOIS, NO. 52900

EXPIRES: NOVEMBER 30, 2013

CONTRACT NO. 97508