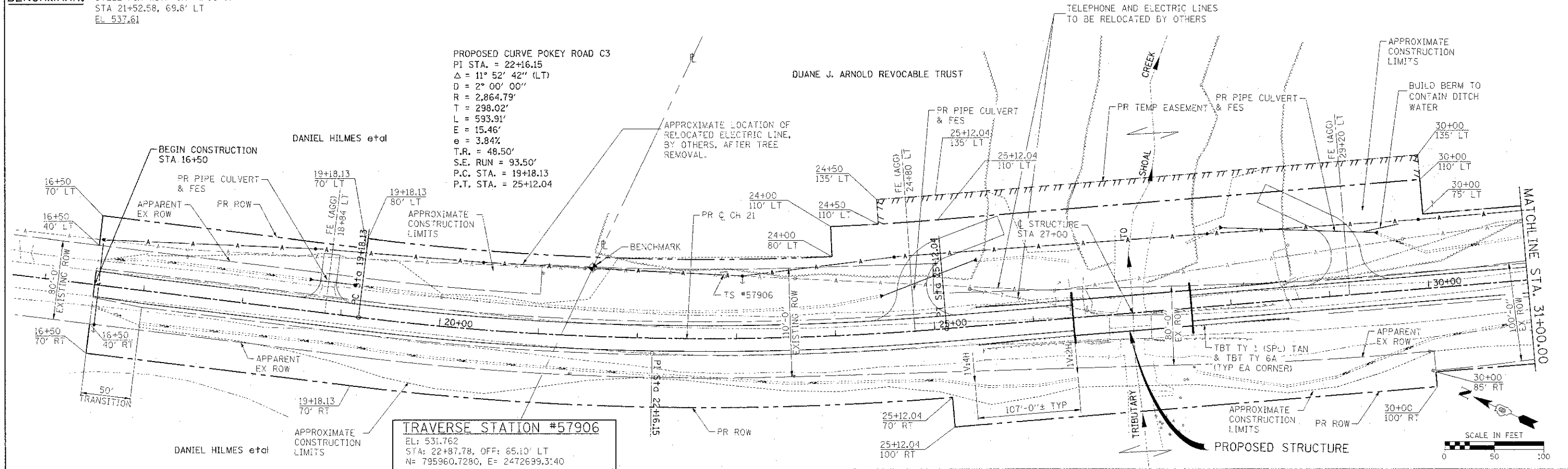
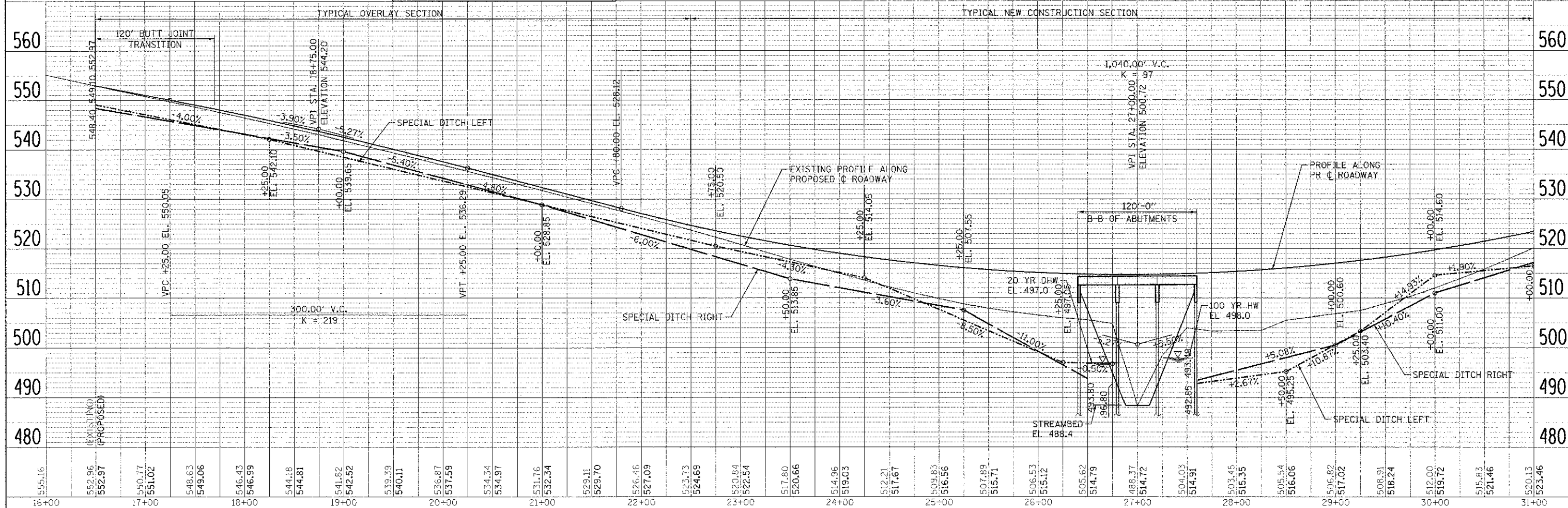


**BENCHMARK:** STEEL P/N WITH CAP (FOUND)  
 STA 21+52.58, 69.8' LT  
 EL. 537.61

**PROPOSED CURVE POKEY ROAD C3**  
 PI STA. = 22+16.15  
 $\Delta = 11^\circ 52' 42''$  (LT)  
 $D = 2^\circ 00' 00''$   
 $R = 2,864.79'$   
 $T = 298.02'$   
 $L = 593.91'$   
 $E = 15.46'$   
 $e = 3.84\%$   
 $T.R. = 48.50'$   
 $S.E. RUN = 93.50'$   
 $P.C. STA. = 19+18.13$   
 $P.T. STA. = 25+12.04$



**TRAVERSE STATION #57906**  
 EL: 531.762  
 STA: 22+87.78, OFF: 65.10' LT  
 N: 795960.7280, E: 2472639.3140



FILE NAME: I:\15748\02\07\01\57906.dgn	USER NAME: JOSEPH.DESER	DESIGNED: K.M.M.	REVISED: -	<b>STATE OF ILLINOIS DEPARTMENT OF TRANSPORTATION</b>	<b>PLAN &amp; PROFILE PROPOSED ROADWAY</b>	FAS RT#:	SECTION:	COUNTY:	TOTAL SHEET SHEETS, NO.:	
		DRAWN: K.C.J.	REVISED: -			779	07-C0085-00-BR	BOND:	41	7
		CHECKED: L.D.G.	REVISED: -			SCALE: SHEET NO. 1 OF 2 SHEETS   STA. 16+00 TO STA. 31+00		SN 003-3053	CONTRACT NO. 97508	
		DATE:	REVISED: -					ILLINOIS FED. AID PROJECT		