

STATE OF ILLINOIS
DEPARTMENT OF TRANSPORTATION

F.A.I. SITE	SECT. CN	COUNTY	TOTAL SHEETS	SHEET NO.
D-92-040-18	D2 BC 2019-1	ROCK ISLAND	4	1
		ILLINOIS	CONTRACT NO. 64M95	

INDEX OF SHEETS

1. COVER SHEET, INDEX OF SHEETS, STATE STANDARDS
2. SUMMARY OF QUANTITIES
3. SCHEDULE OF QUANTITIES
4. LOCATION MAP ROCK ISLAND COUNTY

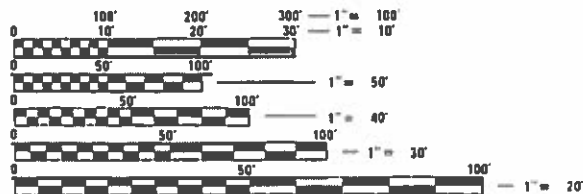
PROPOSED HIGHWAY PLANS

F.A.I. 80 (I-80) & F.A.I. 280 (I-280)
SECTION D2 BC 2019-1
PROJECT: STP-CBCZ(071)
TYPE of IMPROVEMENT: BRIDGE WASHING
ROCK ISLAND COUNTY

C-92-073-18

STATE STANDARDS

- 701101-05 OFF-ROAD OPERATIONS, MULTILANE, 15'(4.5m) TO 24"(600mm) FROM PAVEMENT EDGE
- 701400-09 APPROACH TO LANE CLOSURE, FREEWAY/EXPRESSWAY
- 701406-11 LANE CLOSURE, FREEWAY/EXPRESSWAY, DAY OPERATIONS ONLY
- 701411-09 LANE CLOSURE, MULTILANE, AT ENTRANCE OR EXIT RAMP FOR SPEEDS ≥ 45 MPH
- 701428-01 TRAFFIC CONTROL SETUP AND REMOVAL FREEWAY/EXPRESSWAY
- 701901-07 TRAFFIC CONTROL DEVICES
- 720011-01 METAL POSTS FOR SIGNS, MARKERS AND DELINEATORS
- 728001-01 TELESCOPING STEEL SIGN SUPPORT
- 729001-01 APPLICATIONS OF TYPES A & B METAL POSTS (FOR SIGNS & MARKERS)
- 701006-05 OFF-RD OPERATIONS, 2L, 2W, 15' (4.5m) TO 24" (600 mm) FROM PAVEMENT EDGE
- 701401-12 LANE CLOSURE, FREEWAY / EXPRESSWAY

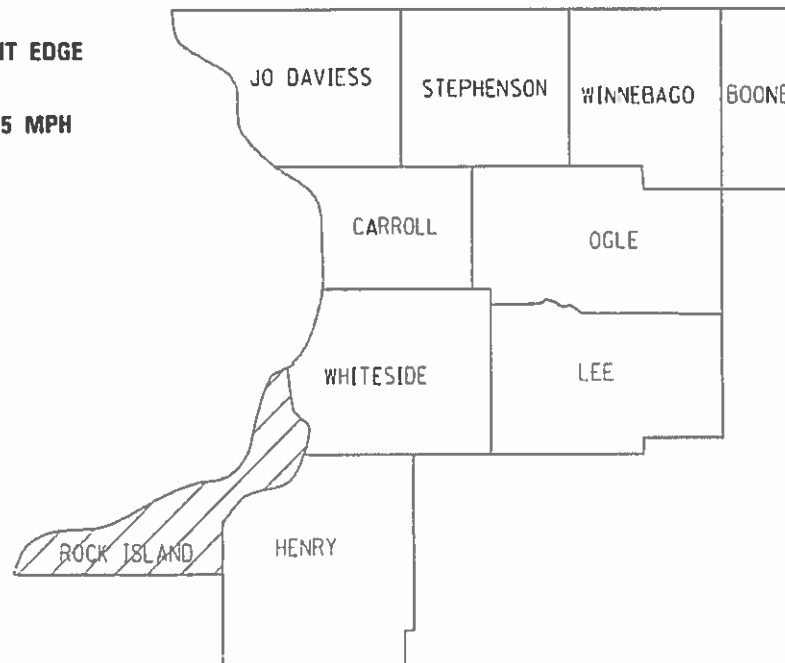


FULL SIZE PLANS HAVE BEEN PREPARED USING STANDARD ENGINEERING SCALES. REDUCED SIZED PLANS WILL NOT CONFORM TO STANDARD SCALES. IN MAKING MEASUREMENTS ON REDUCED PLANS, THE ABOVE SCALES MAY BE USED.

J.U.L.I.E.
JOINT UTILITY LOCATION INFORMATION FOR EXCAVATION
1-800-892-0123
OR 811

PROJECT ENGINEER: DAVID DOSS (815) 284-5416
PROJECT MANAGER: MAHMOUD ETEMADI (815) 284-5393

CONTRACT NO. 64M95



LOCATION OF SECTION INDICATED THIS: - [hatched symbol]

D-92-040-18



LOCATION OF SECTION INDICATED THIS: - [hatched symbol]

STATE OF ILLINOIS
DEPARTMENT OF TRANSPORTATION

SUBMITTED: 9/10/2018

[Signature]
REGIONAL ENGINEER

Oct 5 2018
[Signature]
ENGINEER OF DESIGN AND ENVIRONMENT

Oct 5 2018
[Signature]
DIRECTOR OF HIGHWAYS PROJECT IMPLEMENTATION

PRINTED BY THE AUTHORITY
OF THE STATE OF ILLINOIS

SUMMARY OF QUANTITIES

Paycode	Description	Units	Total	ILLINOIS	IOWA
				URBAN STP > 200k 90% FEDERAL 10% STATE 0047	URBAN 100% STATE 0047
59200101	BRIDGE WASHING NO. 1	EACH	1	0.5	0.5
59200102	BRIDGE WASHING NO. 2	EACH	1	0.5	0.5
59200103	BRIDGE WASHING NO. 3	EACH	1	0.5	0.5
67100100	MOBILIZATION	L SUM	1	0.5	0.5
70100420	TRAFFIC CONTROL AND PROTECTION, STANDARD 701411	EACH	2	1	1
70100700	TRAFFIC CONTROL AND PROTECTION, STANDARD 701406	L SUM	1	0.5	0.5
Z0048665	RAILROAD PROTECTIVE LIABILITY INSURANCE	L SUM	1	0.5	0.5

MODEL: Default
 FILE: \\msc01\BIBID\BIBID\ITC\Illinois\gov\PI\DOT\Documents\BIBID\Office\BIBID\2\Projects\Operations\BIBID_Section\BIBID_Bridge_Washing_over_the_Mississippi_River\2_structures\CADD\64M95-struct-cover.dgn

USER NAME = dossed	DESIGNED - _____	REVISED - _____
PLOT SCALE = 40.0000 ' / in.	DRAWN - _____	REVISED - _____
PLOT DATE = Jul-16-2018 09:42:07 AM	CHECKED - _____	REVISED - _____
	DATE - _____	REVISED - _____

**STATE OF ILLINOIS
DEPARTMENT OF TRANSPORTATION**

SUMMARY OF QUANTITIES

SCALE: _____ SHEET ____ OF ____ SHEETS STA. _____ TO STA. _____

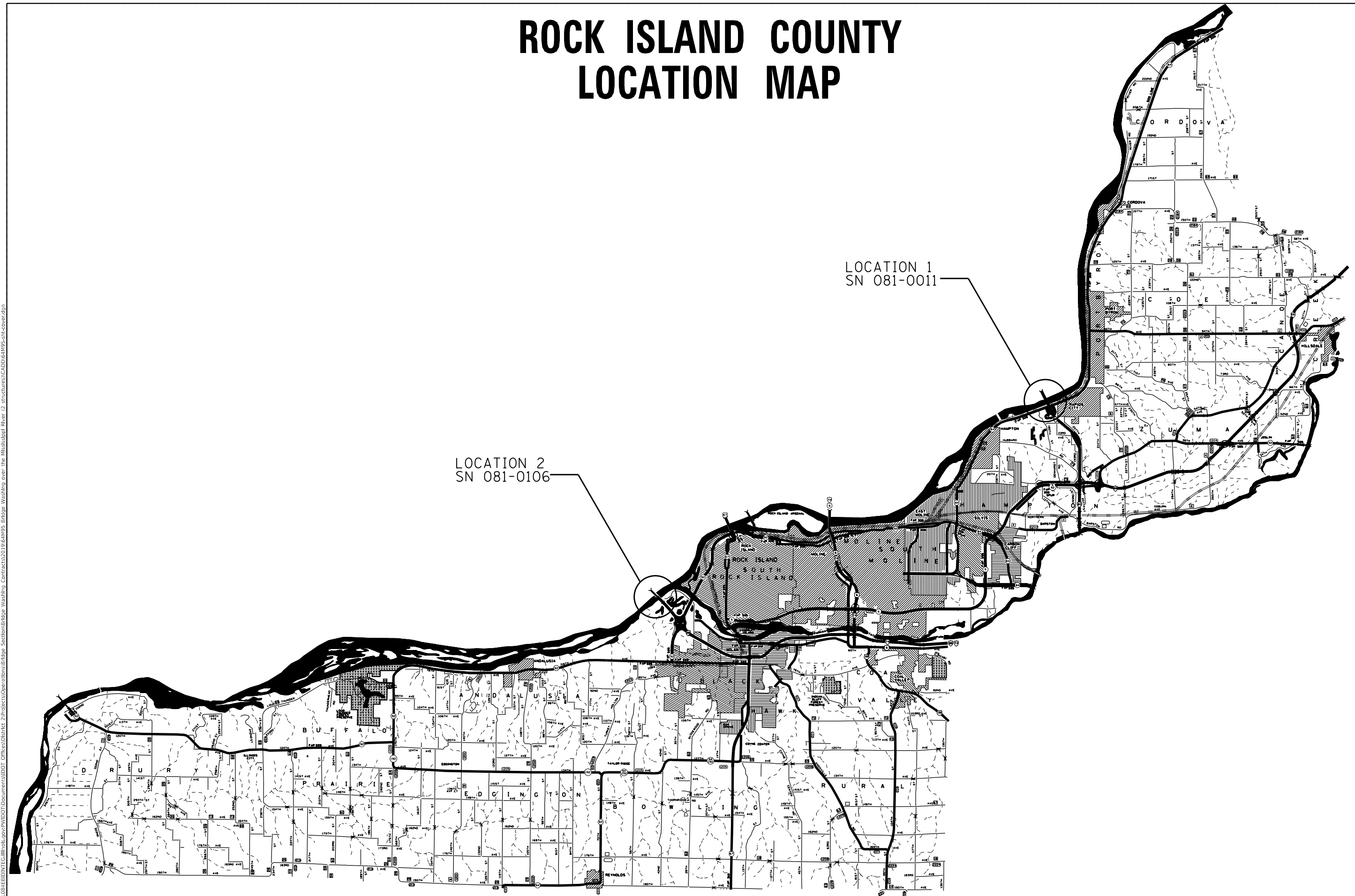
F.A.I. RTE.	SECTION	COUNTY	TOTAL SHEETS	SHEET NO.
80&280	D2 BC 2019-1	ROCK ISLAND	4	2
CONTRACT NO. 64M95				
		ILLINOIS	FED. AID PROJECT	

SCHEDULE OF QUANTITIES

Pay Item Spring 2019	SN	Feature Crossed	Facility Carried	Bridge Location	Traffic Control
BRIDGE WASHING NO. 1	081-0011	Mississippi River	FAI 80 (I-80)	Near LeClaire Iowa	701400 & 701406
Pay Item Fall 2019	SN	Feature Crossed	Facility Carried	Bridge Location	Traffic Control
BRIDGE WASHING NO. 2	081-0011	Mississippi River	FAI 80 (I-80)	Near LeClaire Iowa	701400 & 701406
	SN	Feature Crossed	Facility Carried	Bridge Location	Traffic Control
BRIDGE WASHING NO. 3	081-0106	Mississippi River	FAI 280 (I-280)	SW of Rock Island	701400 & 701406

MODEL: Default
 FILE: \\nas01c.pva.illinois.gov\BID\NTEC\Illinois.gov\PWD\DOT\Documents\DOT_Offices\District 2\Projects\Operations\Bridges_Section\Bridges_Washing_Contracts\2019\64M95_Bridges_Washing_over_the_Mississippi_River_2_structures\CADD\64M95-sht-cover.dgn

ROCK ISLAND COUNTY LOCATION MAP



LOCATION 2
SN 081-0106

LOCATION 1
SN 081-0011

MODEL: Default
 FILE: \\p1ul08a01ed01n01ec.illinois.gov\p1ul08a01ed01n01ec\Documents\DOT_Offices\District 2\Projects\Operations\Bridges_Sections\Bridges_Washins_Contract\301964M95_Bridge_Washins_Contract\301964M95_Site-cover.dgn

USER NAME = dossdd	DESIGNED - _____	REVISED - _____
	DRAWN - _____	REVISED - _____
PLOT SCALE = 40,0000 ' / in.	CHECKED - _____	REVISED - _____
PLOT DATE = Jul-12-2018 02:06:04 PM	DATE - _____	REVISED - _____

**STATE OF ILLINOIS
DEPARTMENT OF TRANSPORTATION**

**ROCK ISLAND COUNTY
LOCATION MAP**

SCALE: _____ SHEET _____ OF _____ SHEETS STA. _____ TO STA. _____

F.A.I. RTE.	SECTION	COUNTY	TOTAL SHEETS	SHEET NO.
80&280	D2 BC 2019-1	ROCK ISLAND	4	4
CONTRACT NO. 64M95				
ILLINOIS FED. AID PROJECT				