

LIST OF ILLINOIS DOT HIGHWAY STANDARDS

STANDARD NO.	DESCRIPTION
000001-06	STANDARD SYMBOLS, ABBREVIATIONS AND PATTERNS
001001-02	AREAS OF REINFORCEMENT BARS
001006	DECIMAL OF AN INCH AND DECIMAL OF A FOOT
280001-07	TEMPORARY EROSION CONTROL SYSTEMS
420406	PAVEMENT CONNECTOR (HMA) FOR BRIDGE APPROACH SLAB
482006-03	HMA SHOULDER ADJACENT TO RIGID PAVEMENT
515001-03	NAME PLATE FOR BRIDGES
542001-06	CONCRETE END SECTIONS FOR PIPE CULVERTS 15" (375 MM) THRU 84" (2100 MM) DIA.
542301-03	PRECAST REINFORCED CONCRETE FLARED END SECTION
542311-07	TRAVERSABLE PIPE GRATE FOR CONCRETE END SECTIONS
601001-05	PIPE UNDERDRAINS
601101-02	CONCRETE HEADWALL FOR PIPE UNDERDRAINS
602001-02	CATCH BASIN, TYPE A
604091-03	FRAME AND GRATE TYPE 24
606001-07	CONCRETE CURB TYPE B AND COMBINATION CONCRETE CURB AND GUTTER
606006-04	OUTLET FOR CONCRETE CURB AND GUTTER, TYPE B-6.24 (B-15.60)
630001-12	STEEL PLATE BEAM GUARDRAIL
630301-08	SHOULDER WIDENING FOR TYPE I (SPECIAL) GUARDRAIL TERMINALS
631031-15	TRAFFIC BARRIER TERMINAL, TYPE 6
635001-02	DELINEATORS
642001-02	SHOULDER RUMBLE STRIPS, 16 IN.
643001-02	SAND MODULE IMPACT ATTENUATOR
664001-02	CHAIN LINK FENCE
665001-02	WOVEN WIRE FENCE
666001-01	RIGHT OF WAY MARKERS
701001-02	OFF-ROAD OPERATIONS, 2L, 2W, MORE THAN 15' (4.5 m) AWAY
701006-05	OFF-ROAD OPERATIONS, 2L, 2W, 15' (4.5 m) TO 24" (600 mm) FROM PAVEMENT EDGE
701011-04	OFF-ROAD MOVING OPERATIONS, 2L, 2W, DAY ONLY
701101-05	OFF-ROAD OPERATIONS, MULTILANE, 15' (4.5 m) TO 24" (600 mm) FROM PAVEMENT EDGE
701106-02	OFF-ROAD OPERATIONS, MULTILANE, MORE THAN 15' (4.5 m) AWAY
701400-09	APPROACH TO LANE CLOSURE, FREEWAY / EXPRESSWAY
701401-11	LANE CLOSURE, FREEWAY / EXPRESSWAY
701426-09	LANE CLOSURE, MULTILANE, INTERMITTENT OR MOVING OPERATION, FOR SPEEDS >= 45 MPH
701451-05	RAMP CLOSURE, FREEWAY / EXPRESSWAY
701901-07	TRAFFIC CONTROL DEVICES
704001-08	TEMPORARY CONCRETE BARRIER
720001-01	SIGN PANEL MOUNTING DETAILS
720006-04	SIGN PANEL ERECTION DETAILS
720011-01	METAL POSTS FOR SIGNS, MARKERS & DELINEATORS
728001-01	TELESCOPING STEEL SIGN SUPPORT
729001-01	APPLICATIONS OF TYPES A & B METAL POSTS (FOR SIGNS & MARKERS)
731001-01	BASE FOR TELESCOPING STEEL SIGN SUPPORT
780001-05	TYPICAL PAVEMENT MARKINGS
781001-04	TYPICAL APPLICATIONS RAISED REFLECTIVE PAVEMENT MARKERS
782006	GUARDRAIL AND BARRIER WALL REFLECTOR MOUNTING DETAILS
B.L.R. 17-4	TRAFFIC CONTROL DEVICES - DAY LABOR CONSTRUCTION
B.L.R. 22-7	TYPICAL APPLICATION OF TRAFFIC CONTROL DEVICES FOR CONSTRUCTION ON RURAL LOCAL HIGHWAYS (TWO-LANE TWO WAY RURAL TRAFFIC) (ROAD CLOSED TO THRU TRAFFIC)

602406-08 PRECAST MANHOLE, TYPE A, 6' (1.8 m) DIAMETER 

GENERAL NOTES

- THE THICKNESS OF HMA SHOWN ON THE PLANS IS THE NOMINAL THICKNESS. DEVIATIONS FROM THE NOMINAL THICKNESS WILL BE PERMITTED WHEN SUCH DEVIATIONS OCCUR DUE TO IRREGULARITIES IN THE EXISTING SURFACE OR BASE ON WHICH THE HMA IS PLACED.
- THE HMA SURFACE OF ALL MAILBOX TURNOUTS, PRIVATE ENTRANCES, COMMERCIAL ENTRANCES, AND SIDE ROADS SHALL BE MADE NEATLY, IN A WORKMANLIKE MANNER, AND SHALL ACCURATELY CONFORM TO THE SHAPES AND DIMENSIONS SHOWN ON THE PLAN DETAILS. IF REQUIRED BY THE ENGINEER, THE CONTRACTOR SHALL BE REQUIRED TO SAW CUT THE HMA SURFACE TO CONFORM TO THE SHAPES AND DIMENSIONS SHOWN ON THE PLAN DETAILS. THIS WORK SHALL BE INCLUDED IN THE COST OF THE HMA SURFACE.

GENERAL NOTES CONTINUED


- EXCEPT AS NOTED ON THE PLANS, PAVEMENT GRADES SHOWN ARE AT THE TOP OF PAVEMENT SURFACES.
- BEFORE ORDERING PIPE CULVERTS OR PIPE DRAINS, THE CONTRACTOR SHALL CONSULT THE ENGINEER FOR EXACT LENGTHS.
- THE ENGINEER WILL BE THE SOLE JUDGE CONCERNING CURING TIME FOR THE VARIOUS HMA LIFTS.
- FOR STABILIZATION, ALL TYPE III BARRICADES SHALL REQUIRE A MINIMUM OF FOUR SAND BAGS PER BARRICADE.
- SEEDING SHALL NOT BE PERMITTED AT ANY TIME WHEN THE GROUND IS FROZEN, WET, OR IN AN UNTILLABLE CONDITION. LOCATIONS TO BE SEEDED WILL BE DETERMINED BY THE ENGINEER.
- ONLY THOSE TREES DESIGNATED BY THE ENGINEER OR LISTED IN THE TREE REMOVAL SCHEDULE SHALL BE REMOVED. THE CONTRACTOR SHALL PROTECT ALL REMAINING TREES FROM DAMAGE DUE TO HIS OPERATIONS.
- ON EXISTING PAVEMENT WHICH MAY BE SUPERELEVATED, THE NEW HMA PAVEMENT SHALL BE BUILT WITH THE SAME SUPERELEVATION UNLESS NEW SUPERELEVATION RATES ARE GIVEN ON THE PLANS.
- ALL ELEVATIONS REFER TO U.S.G.S. MEAN SEA LEVEL DATUM.
- ABANDONED UNDERGROUND UTILITIES THAT CONFLICT WITH CONSTRUCTION SHALL BE DISPOSED OF OUTSIDE THE LIMITS OF THE RIGHT OF WAY ACCORDING TO ARTICLE 202.03 OF THE STANDARD SPECIFICATIONS AND AS DIRECTED BY THE ENGINEER. THIS WORK WILL NOT BE PAID FOR SEPARATELY, BUT SHALL BE INCLUDED IN THE COST OF EARTH EXCAVATION.
- ANY REFERENCE TO A STANDARD IN THESE PLANS SHALL BE INTERPRETED TO MEAN THE EDITION AS INDICATED BY THE SUBNUMBER SHOWN IN THE LIST OF STANDARDS OR THE COPY INCLUDED IN THESE PLANS.
- THE FOLLOWING RATES OF APPLICATION HAVE BEEN USED IN CALCULATING PLAN QUANTITIES:

GRANULAR MATERIALS	2.05 TONS / CU YD
HMA RESURFACING	112 LBS / SQ YD / IN
SHORT TERM PAVEMENT MARKING	10 FT / 100 FT OF APPLICATION
MIX FOR CRACKS, JTS & FLGWYS	0.0003 TONS / SQ YD
LEVEL BINDER (HAND METHOD)	0.0005 TONS / SQ YD
SUPPLEMENTAL WATERING	3 GAL / SQ YD / APPLICATION
CALCIUM CHLORIDE	2 LB / SQ YD / APPLICATION
AGGREGATE DITCH CHECKS	5 TONS AGGREGATE
- THE WORK REQUIRED TO CONNECT ANY SEWER TO AN EXISTING DRAINAGE STRUCTURE OR PIPE WILL NOT BE PAID FOR SEPARATELY, BUT SHALL BE CONSIDERED AS INCLUDED IN THE CONTRACT UNIT PRICE BID FOR THE SEWER ITEMS.
- MEMBERS OF JULIE KNOWN TO BE WITHIN THE LIMITS OF THE IMPROVEMENT ARE:
 - AT&T UNDERGROUND CABLE
 - AQUA ILLINOIS 12" DI WATER MAIN
 - COMCAST UNDERGROUND CABLE
 - COM ED OVERHEAD WIRES
 - NICOR GAS GAS MAIN
 - VILLAGE OF BOURBONNAIS SANITARY SEWER & FORCE MAIN

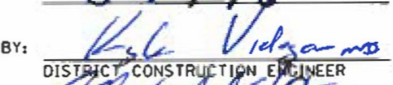
COMMITMENTS

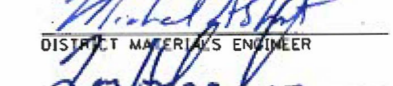
IN ORDER TO PROTECT INDIANA BATS AND NORTHERN LONG-EARED BATS, NO TREES 3 INCHES OR GREATER IN DIAMETER AT BREAST HEIGHT SHALL BE CLEARED BETWEEN APRIL 1 AND SEPTEMBER 30.


STATE OF ILLINOIS
DEPARTMENT OF TRANSPORTATION
DISTRICT THREE

PREPARED BY: 
DISTRICT STUDIES & PLANS ENGINEER

DATE: 8-17-18

EXAMINED BY: 
DISTRICT CONSTRUCTION ENGINEER


DISTRICT MATERIALS ENGINEER


DISTRICT OPERATIONS ENGINEER

STATE OF ILLINOIS
DEPARTMENT OF TRANSPORTATION
DISTRICT THREE
AS BUILT INFORMATION

SUPERVISING CONSTRUCTION FIELD ENGINEER

RESIDENT ENGINEER / TECHNICIAN

START & END DATES
OF CONSTRUCTION: _____

INSPECTORS: _____

MIXTURES TABLE

LOCATIONS & MIXTURE USES	CH 8 FULL DEPTH PAVEMENT			POLYMERIZED HMA SURFACE (I-57)	HMA SHOULDERS (I-57) BOTTOM LIFTS	HMA SHOULDERS (I-57) TOP LIFTS (1 1/2")	POLYMERIZED HMA SURFACE (TEMP. FOR I-57 RUMBLES)
	* HMA BASE COURSE, 8"	POLYMERIZED HMA BINDER COURSE, 2 1/4"	POLYMERIZED HMA SURFACE 2"				
BINDER GRADE (PG)	PG64-22	SBS PG70-28	SBS PG70-28	SBS PG70-28	PG64-22	PG70-28	SBS PG70-28
DESIGN AIR VOIDS	4.0% @ N70	4.0% @ N70	4.0% @ N70	4.0% @ N90	4.0% @ N70	4.0% @ N70	4.0% @ N70
MIXTURE COMPOSITION	IL-19.0	IL-9.5	IL-9.5	IL-9.5	IL-19.0	IL-9.5	IL-9.5
FRICTION AGGREGATE			MIXTURE D	MIXTURE E		MIXTURE C	MIXTURE C
MIXTURE WEIGHT	112 LBS/SY/IN	112 LBS/SY/IN	112 LBS/SY/IN	112 LBS/SY/IN	112 LBS/SY/IN	112 LBS/SY/IN	112 LBS/SY/IN
QUALITY MANAGEMENT PROGRAM	OC/OA	OC/OA	OC/OA	OC/OA	OC/OA	OC/OA	OC/OA
SUBLOT SIZE	N/A	N/A	N/A	N/A	N/A	N/A	N/A
DENSITY TEST METHOD	CORES/ CORRELATION	CORES/ CORRELATION	CORES/ CORRELATION	CORES	CORES	CORES	CORES

* USE FULL DEPTH PAVEMENT (HMA BASE COURSE DEPTH VARIES) WHEN CONSTRUCTING PAVEMENT CONNECTOR (HMA) FOR BRIDGE APPROACH SLAB

KNIGHT Engineers & Architects	USER NAME = dcarroll	DESIGNED = D.M.S.	REVISED =	STATE OF ILLINOIS DEPARTMENT OF TRANSPORTATION	GENERAL NOTES, COMMITMENTS, HIGHWAY STANDARDS AND MIX TABLE I-57			F.A.I. RTE. = 57	SECTION = 46-211HBR-1	COUNTY = KANKAKEE	TOTAL SHEETS = 92	SHEET NO. = 2
	PLOT SCALE = 1/100	CHECKED = F.J.W.	REVISED =					SCALE: NONE	SHEET NO. OF SHEETS	STA. 1413+40 TO STA. 1429+95	FED. ROAD DIST. NO. 3	ILLINOIS FED. AID PROJECT
	PLOT DATE =	DATE = 08-10-2018	REVISED =									

SUMMARY OF QUANTITIES				CONSTRUCTION CODE	
CODE NO	ITEM	UNIT	TOTAL QUANTITY	0010 SN046-0150 90% FED 10% STATE	0004 ROADWAY 100% COUNTY
550A0340	STORM SEWERS, CLASS A, TYPE 2, 12"	FOOT	104	104	
550A0360	STORM SEWERS, CLASS A, TYPE 2, 15"	FOOT	35	35	
550A0480	STORM SEWERS, CLASS A, TYPE 2, 48"	FOOT	120	120	
58700300	CONCRETE SEALER	SQ FT	1,811	1,811	
59100100	GEOCOMPOSITE WALL DRAIN	SQ YD	136	136	
60100060	CONCRETE HEADWALLS FOR PIPE DRAINS	EACH	4	4	
60100945	PIPE DRAINS 12"	FOOT	305	305	
60108100	PIPE UNDERDRAINS 4" (SPECIAL)	EACH	34	34	
60108501	PIPE UNDERDRAINS, TYPE 3	EACH	2496	2496	
60204505	CATCH BASINS, TYPE A, 5' DIAMETER, TYPE 8 GRATE	EACH	1	1	
60224005	MANHOLES, TYPE A, 6' -DIAMETER, TYPE 8 GRATE	EACH	1	1	
60237470	INLETS, TYPE A, TYPE 24 FRAME AND GRATE	EACH	8	8	
60255500	MANHOLES TO BE ADJUSTED	EACH	1	1	
60600095	CLASS SI CONCRETE (OUTLET)	CU YD	20	20	
60605000	COMBINATION CONCRETE CURB AND GUTTER, TYPE B-6.24	FOOT	843	843	

* SPECIALTY ITEM

FILED \$

DRAINAGE STRUCTURES												
STRUCTURE NO.	STATION	OFFSET	INLET	MH TY A	MH 6' DIA.	CONCRETE	PRC	PRC	PRC	CONC ES	TRVRS	MH
			TY A	TY 8	TY 1	THRUST	FES 12"	FES 15"	FES 24"	542001	PIPE GRT	ADJUST
			TY 24 F&G	TY 8	TY 1	BLOCKS	12"	15"	24"	36 1:6	CON ES	
			(EACH)	(EACH)	(EACH)	(EACH)	(EACH)	(EACH)	(EACH)	(EACH)	(FOOT)	(EACH)
1	1417+55	26' L	1									
2	1417+55	26' R	1									
3	1418+25	26' L	1									
4	1418+25	26' R	1									
5	1423+25	26' L	1									
6	1423+25	26' R	1									
7	1424+45	26' L	1									
8	1424+45	26' R	1									
9	1418+25	63' L		1								
10	1419+50	70' L			1							
---	1417+55	46' L				1						
---	1418+25	56' L				1						
---	1419+91.3	80' L					1					
---	1423+25	74' L				1						
---	1423+25	89' R				1						
---	1424+45	61' L				1						
---	1424+45	75' R				1						
---	1417+55	56' L					1					
---	1419+98	80' L						1		33		
---	1419+98	103' R							1	33		
---	1423+25	80' L					1					
---	1423+25	91' R					1					
---	1424+40	70' L							1			
---	1424+40	81' R							1			
---	1424+45	68' L					1					
---	1424+45	81' R					1					
---	420+00	110' L									1	
TOTAL			8	1	1	6	5	1	2	2	66	1

PIPE UNDERDRAIN SCHEDULE					
NO.	STATION OFFSET	STATION OFFSET	PIPE UNDERDRAINS	PIPE UNDERDRAIN	CONCRETE
			TYPE 3	(SPECIAL)	HEADWALL
			(FOOT)	(FOOT)	FOR PIPE
					DRAINS
U1	1414+00, 12'L	1414+00, 20'L		8	
U2	1414+00	1417+50	351		
U3	1417+55	1418+25	65		
U4	1418+25	1419+41	114		
U5	1414+00, 12'R	1414+00, 21'R		9	
U6	1414+00	1417+50	351		
U7	1417+55	1418+25	65		
U8	1418+25	1419+41	114		
U9	1422+20	1423+25	103		
U10	1423+25	1424+45	115		
U11	1424+50	1429+50	500		
U12	1429+50, 12'L	1429+50, 19'L		7	
U13	1422+20	1423+25	103		
U14	1423+25	1424+45	115		
U15	1424+50	1429+50	500		
U16	1429+50, 12'R	1429+50, 22'R		10	
UD1	1414+00, 20'L				1
UD2	1414+00, 21'R				1
UD3	1429+50, 19'L				1
UD4	1429+50, 22'R				1
TOTAL			2,496	34	4

CLASS SI CONCRETE (OUTLET)		
STATION	OFFSET	QUANTITY (CU YD)
1417+05	45' LT	4.4
1417+05	47' RT	4.5
1425+00	62' LT	5.7
1425+00	58' RT	5.4
TOTAL		20

STORM SEWER AND CULVERT PIPE SCHEDULE									
FROM STRUCTURE NO.	STATION	OFFSET	PIPE CULVERT	PIPE CULVERT	STORM SEWER	STORM SEWER	STORM SEWER	PIPE DRAIN	TRENCH BACKFILL
			CL A TY1 36"	CL A TY4 24"	CL A TY2 12"	CL A TY2 15"	CL A TY2 48"	12"	(CU YD)
			(FOOT)	(FOOT)	(FOOT)	(FOOT)	(FOOT)	(FOOT)	
1	1417+55	26' L						23	
2	1417+55	26' R			52				12
3	1418+25	26' L						57	
4	1418+25	26' R			52				12
5	1423+25	26' L						60	
6	1423+25	26' R						70	28
7	1424+45	26' L						47	
8	1424+45	26' R						48	28
9	1418+25	63' L					120		
10	1419+50	70' L				35			
FES	1419+98	88' R	30						
EXIST. HDWL.	1419+98	49' L	22						
FES	1424+40	81' R		139					185
TOTAL			52	139	104	35	120	305	265

STABILIZED CONSTRUCTION ENTRANCE				
FROM STATION	TO STATION	SIDE (LT/RT)	AREA (SQ YD)	
1413+40	1413+90	LT	66.7	
1429+45	1429+95	RT	66.7	
TOTAL			133	

MATERIAL TRANSFER DEVICE				
FROM STATION	TO STATION	SIDE	AREA (SQ YD)	
413+70	427+80	N.B.	511.5	
413+70	427+80	S.B.	511.5	
TOTAL			1,023	

LONGITUDINAL JOINT SEALANT				
FROM STATION	TO STATION	SIDE	LENGTH (FT)	
413+70	427+80	N.B.	1410	
413+70	427+80	S.B.	1410	
TOTAL			2,820	

DRAINAGE			
STATION	OFFSET	REINFORCEMENT BARS (POUND)	CONCRETE COLLAR (CU YD)
1419+98	80' LT	33	0.416
1419+98	103' RT	33	0.416
TOTAL		66	0.83

LANDSCAPING								
FROM STATION	TO STATION	SIDE (LT/RT)	HEAVY DUTY EROSION CONTROL BLANKET	MULCH, METHOD 2	SEEDING, CLASS 2A	NITROGEN FERTILIZER NUTRIENT	PHOSPHORUS FERTILIZER NUTRIENT	POTASSIUM FERTILIZER NUTRIENT
			(SQ YD)	(ACRE)	(ACRE)	(POUND)	(POUND)	(POUND)
1413+40	1420+14	LT	2,517	0.52	0.52	47	47	47
1413+40	1420+14	RT	2,915	0.60	0.60	54	54	54
419+70	422+00	MEDIAN	1,439	0.30	0.30	27	27	27
1421+47	1429+95	LT	4,155	0.86	0.86	77	77	77
1421+47	1428+35	RT	3,644	0.75	0.75	68	68	68
1428+48	1429+95	RT	116	0.02	0.02	2	2	2
TOTAL			14,786	3.05	3.05	275	275	275

INLET AND PIPE PROTECTION			
STATION	OFFSET		QUANTITY (EACH)
1418+25	61' LT		1
1419+98	88' RT		1
1424+41	81' RT		1
421+97	10' RT		1
TOTAL			4

PERIMETER EROSION BARRIER				
FROM STATION	TO STATION	SIDE (LT/RT)	LENGTH (FOOT)	
1413+40	1420+09	LT	696	
1413+40	1420+14	RT	645	
1420+54	1421+03	LT	49	
1420+59	1421+08	RT	49	
1421+48	1429+95	LT	831	
1421+51	1429+95	RT	868	
TOTAL			3,138	

TEMPORARY EROSION CONTROL				
FROM STATION	TO STATION	SIDE (LT/RT)	TEMPORARY EROSION CONTROL SEEDING	TEMPORARY EROSION CONTROL BLANKET
			(POUND)	(SQ YD)
1413+40	1429+95	LT	347	8,406
1413+40	1429+95	RT	474	11,471
TOTAL			821	19,877

TEMPORARY DITCH CHECKS				
FROM STATION	TO STATION	SIDE (LT/RT)	QUANTITY (EACH)	LENGTH (FOOT)
1413+40	1416+40	LT	4	33.2
1413+40	1416+23	RT	5	41.5
1418+00	1419+72	RT	3	24.9
1420+00	1420+00	LT	1	8.3
1423+00	1427+00	RT	6	49.8
1423+12	1426+00	LT	5	41.5
1427+85	1429+95	LT	3	24.9
1429+95	1429+95	RT	1	8.3
TOTAL			28	233

TURF REINFORCEMENT MAT				
STATION	OFFSET	DIMENSIONS	AREA (SQ YD)	
1417+00	45' LT	6' X 9'	6.0	
1417+00	47' RT	6' X 9'	6.0	
1417+55	60' LT	6' X 9'	6.0	
1419+98	80' LT	20' X 20'	44.4	
1423+25	80' LT	6' X 9'	6.0	
1423+25	91' RT	6' X 9'	6.0	
1424+43	70' LT	12' X 16'	21.3	
1424+43	81' RT	12' X 10'	13.3	
1425+00	62' LT	6' X 9'	6.0	
1425+00	58' RT	6' X 9'	6.0	
TOTAL			121	

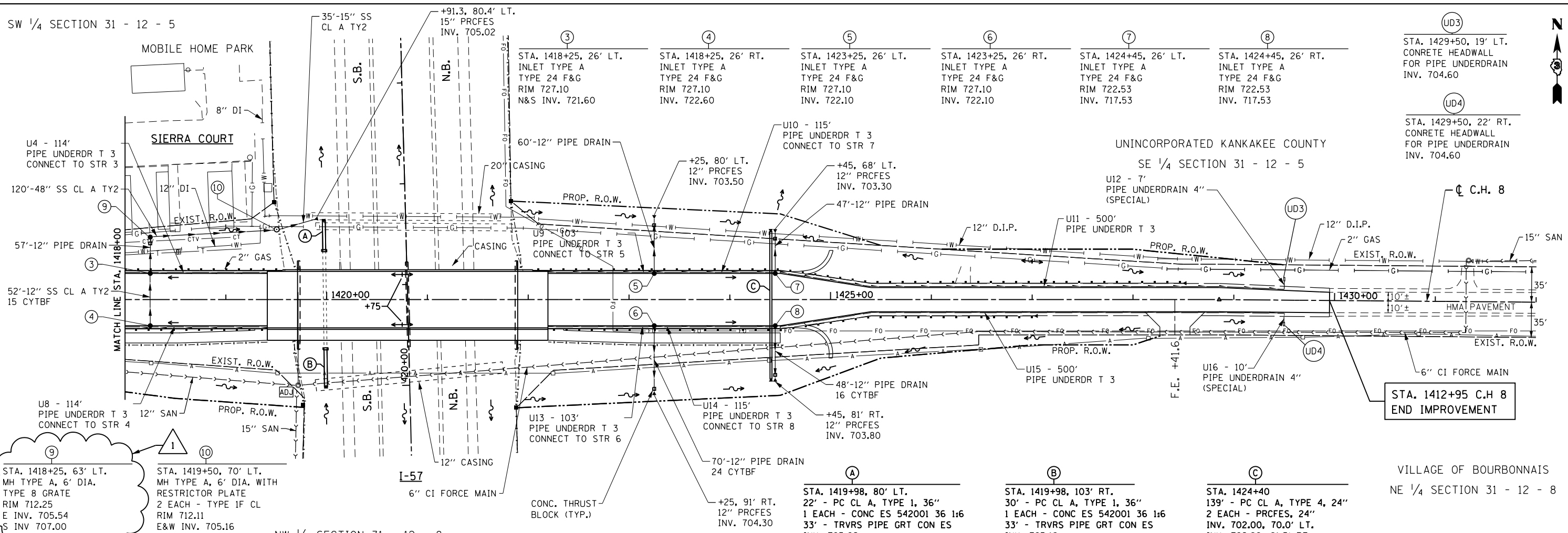
9FILES

	USER NAME = FWilliams	DESIGNED - D.M.S.	REVISED - 10-24-2018
	PLOT SCALE = 1:1000	DRAWN - D.M.S.	REVISED -
	PLOT DATE	CHECKED - F.J.W.	REVISED -
		DATE - 08-10-2018	REVISED -

STATE OF ILLINOIS
DEPARTMENT OF TRANSPORTATION

SCHEDULE OF QUANTITIES			
F.A.I. RTE.	SECTION	COUNTY	TOTAL SHEETS
57	46-2(I)HBR-1	KANKAKEE	92
CONTRACT NO. 66956			17
SCALE: NONE SHEET NO. 2 OF 4 SHEETS STA. 1413+40 TO STA. 1429+95			
FED. ROAD DIST. NO. 3 ILLINOIS FED. AID PROJECT			

SW 1/4 SECTION 31 - 12 - 5

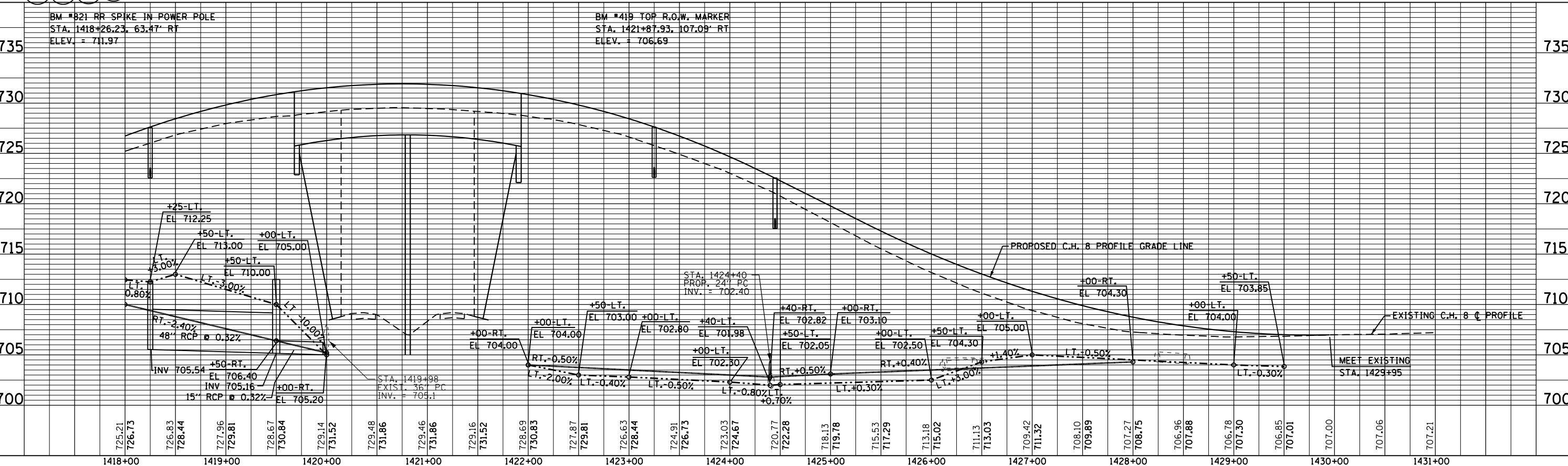


STA. 1418+25, 63' LT. MH TYPE A, 6' DIA. TYPE 8 GRATE RIM 712.25 E INV. 705.54 S INV. 707.00

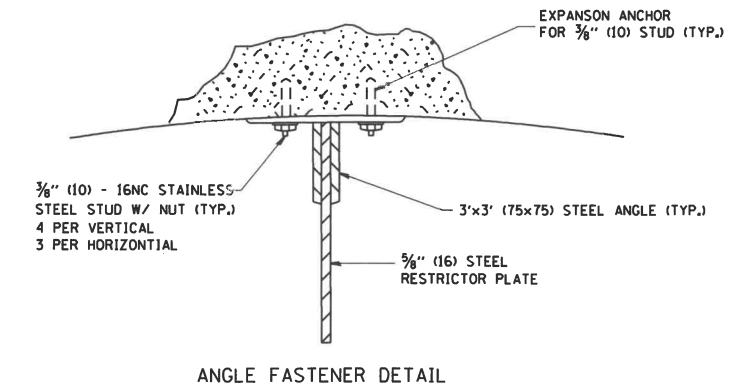
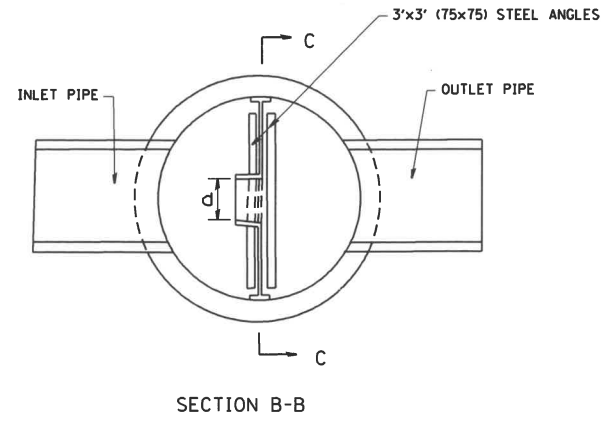
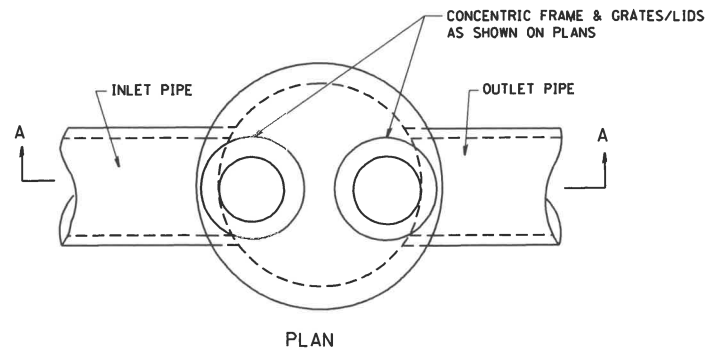
STA. 1419+50, 70' LT. MH TYPE A, 6' DIA. WITH RESTRICTOR PLATE 2 EACH - TYPE IF CL RIM 712.11 E&W INV. 705.16

NW 1/4 SECTION 31 - 12 - 8

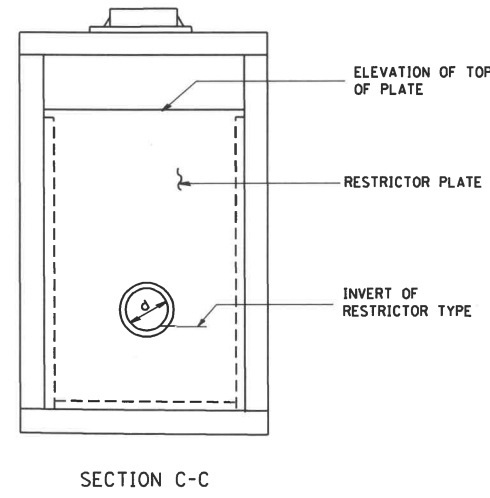
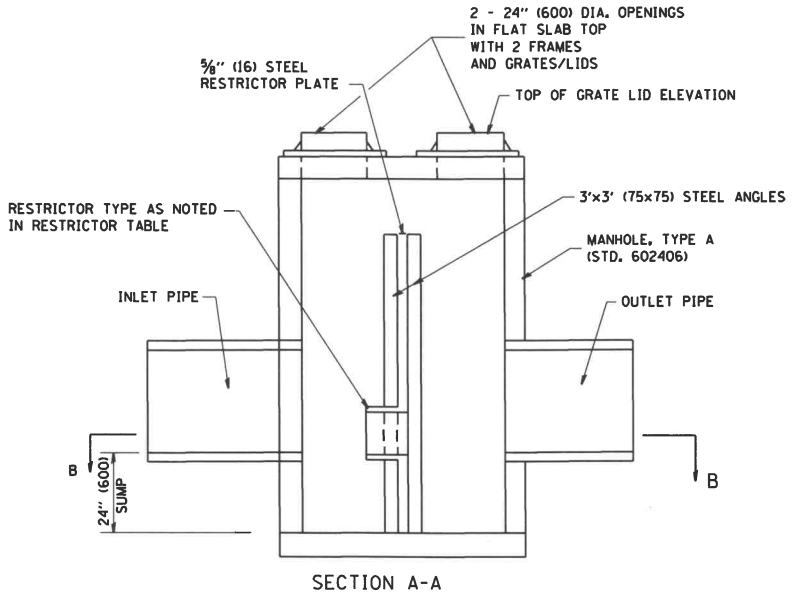
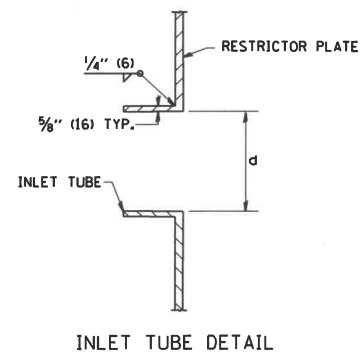
VILLAGE OF BOURBONNAIS
NE 1/4 SECTION 31 - 12 - 8



KNIGHT Engineers & Architects		USER NAME = FWilliams DESIGNED - D.M.S. DRAWN - D.M.S. CHECKED - F.J.W. PLOT DATE	DESIGNED - D.M.S. REVISIONS - CHECKED - F.J.W. DATE - 08-10-2018	REVISED - 10-24-2018 REVISED - REVISED - REVISED -	STATE OF ILLINOIS DEPARTMENT OF TRANSPORTATION		DRAINAGE PLAN AND PROFILE C.H. 8		F.A.I. RTE. 57 SECTION 46-2(1)HR-1 COUNTY KANKAKEE TOTAL SHEETS 92 SHEET NO. 35 CONTRACT NO. 66956	SCALE: 1" = 50' SHEET NO. 2 OF 2 SHEETS STA. 1418+00 TO STA. 1431+00	FED. ROAD DIST. NO. 3 ILLINOIS FED. AID PROJECT
---	--	---	---	---	---	--	---	--	---	--	---

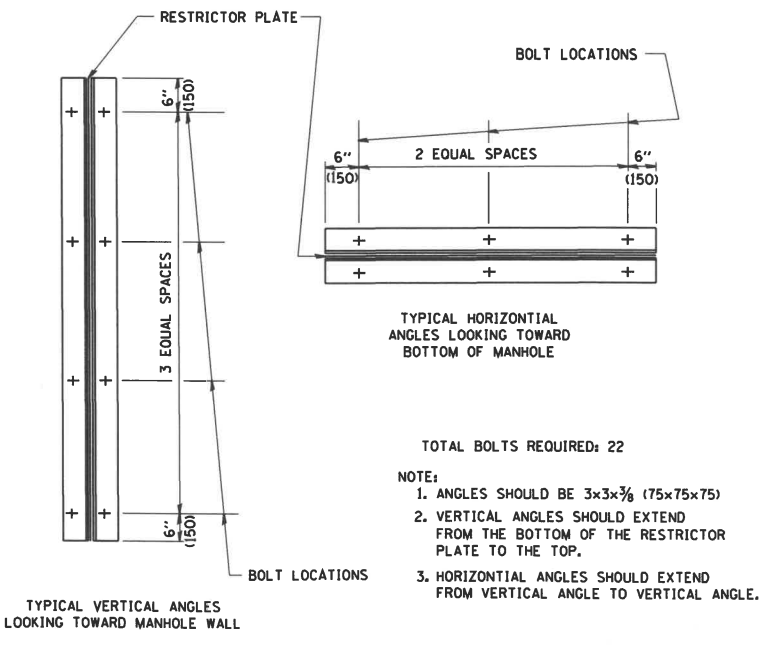


- NOTES:
1. ALL STEEL ANGLES AND PLATES TO BE GALVANIZED AFTER FABRICATION.
 2. ALL RESTRICTOR PLATES, ANGLES AND HARDWARE TO BE INCLUDED IN THE COST OF THE MANHOLE.
 3. BASIS OF PAYMENT: "MANHOLES, TYPE A, 6 FT. (1.8 m)-DIAMETER, TYPE I FRAME, CLOSED LID, RESTRICTOR PLATE" EACH



STATION	MANHOLE DIAMETER	FRAME AND GRATE	RESTRICTOR TYPE	INSIDE RESTRICTOR TYPE DIAMETER in. (mm) (d)	INVERT OF RESTRICTOR TYPE	ELEVATION OF TOP OF PLATE OVERFLOW
1419+50	6'	2-T1F CL	2	4.8"	705.16	709.54

MANHOLE WITH RESTRICTOR PLATE



RESTRICTOR TYPE					
1	2	3	4	5	6
RE-ENTRANT TUBE	SHARP EDGED	SQUARE EDGED	RE-ENTRANT TUBE	SQUARE EDGED	ROUNDED
LENGTH: 1/2 TO 1 DIA.		STREAM CLEARS SIDES	LENGTH: 2-1/2 DIA.	LENGTH: 2-1/2 DIA.	
C=.52	C=.61	C=.61	C=.73	C=.82	C=.98
VALUES OF "C" FOR CIRCULAR AND SQUARE ORIFICES					

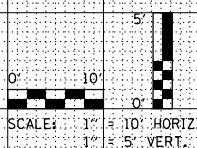
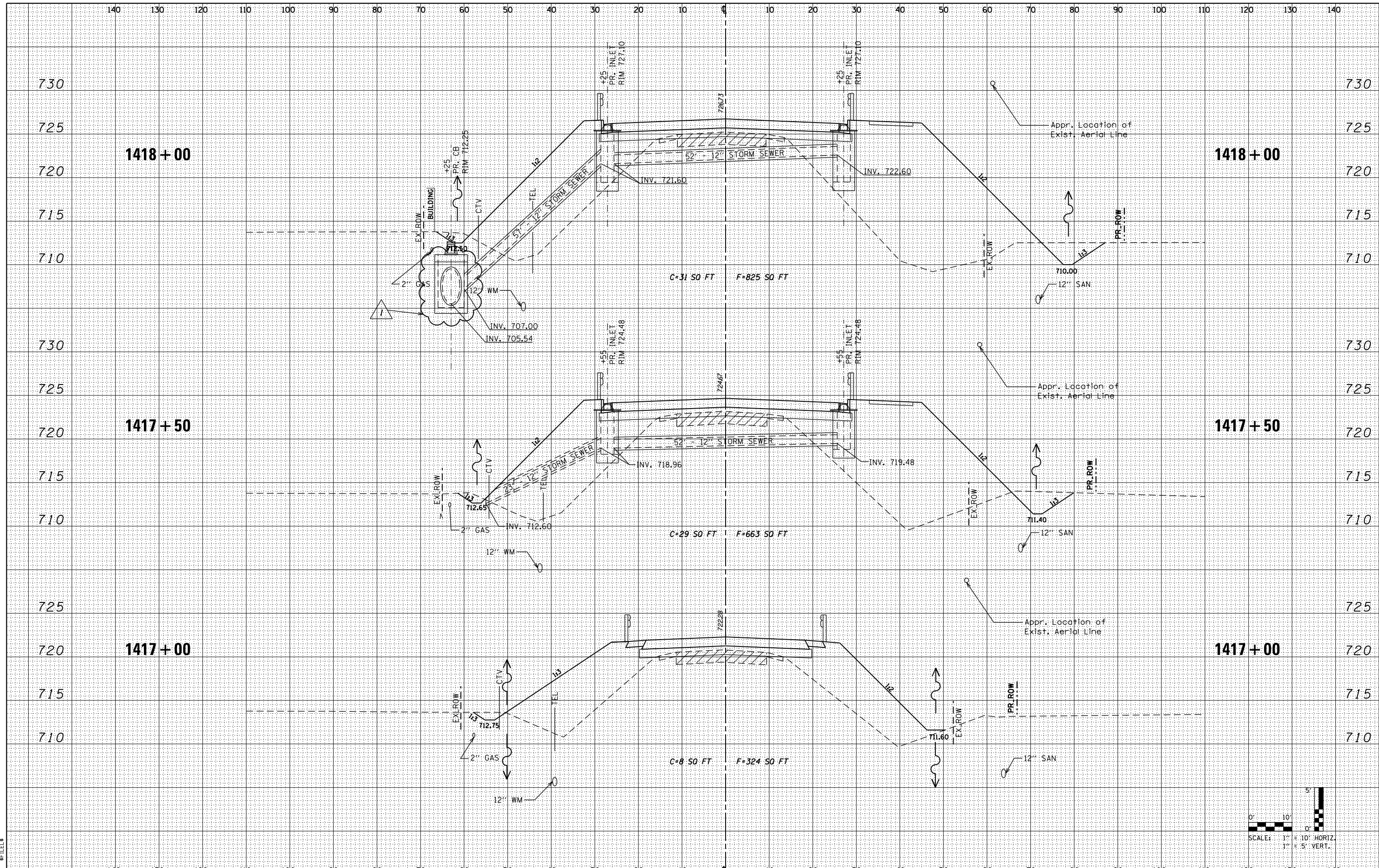
ALL DIMENSIONS ARE IN INCHES (MILLIMETERS) UNLESS OTHERWISE SHOWN.

FILE NAME = W:\data\22x34\bd12.dgn	USER NAME = gaglianobt	DESIGNED - R. SHAH	REVISED - R. SHAH 10-25-94
	PLOT SCALE = 50.000 ' / IN.	DRAWN -	REVISED - E. GOMEZ 08-28-00
	PLOT DATE = 1/4/2008	CHECKED -	REVISED - M. GOMEZ 01-08-01
		DATE - 09-09-94	REVISED -

STATE OF ILLINOIS
DEPARTMENT OF TRANSPORTATION

SCALE: NONE		SHEET NO. 1 OF 1 SHEETS		STA.	TO STA.
-------------	--	-------------------------	--	------	---------

F.A.J. RTE.	SECTION	COUNTY	TOTAL SHEETS	SHEET NO.
57	46-2 (1) HBR-1	KANKAKEE	92	76
BD600-04 (BD-12)		CONTRACT NO. 66956		
FED. ROAD DIST. NO. 1 ILLINOIS FED. AID PROJECT				



KNIGHT
Engineers & Architects

USER NAME - FWilliams	DESIGNED - D.M.S.	REVISED - 10-24-2018
PLOT SCALE = 1:200	DRAWN - D.M.S.	REVISED -
PLOT DATE	CHECKED - F.J.W.	REVISED -
	DATE - 08-10-2018	REVISED -

**STATE OF ILLINOIS
DEPARTMENT OF TRANSPORTATION**

**CROSS SECTIONS
C.H. 8**

SCALE: NONE SHEET NO. 4 OF 16 SHEETS STA. TO STA.

F.A.I. RTE.	SECTION	COUNTY	TOTAL SHEETS	SHEET NO.
57	46-2(1)HR-1	KANKAKEE	92	80
				CONTRACT NO. 66956

FED. ROAD DIST. NO. 3 ILLINOIS FED. AID PROJECT