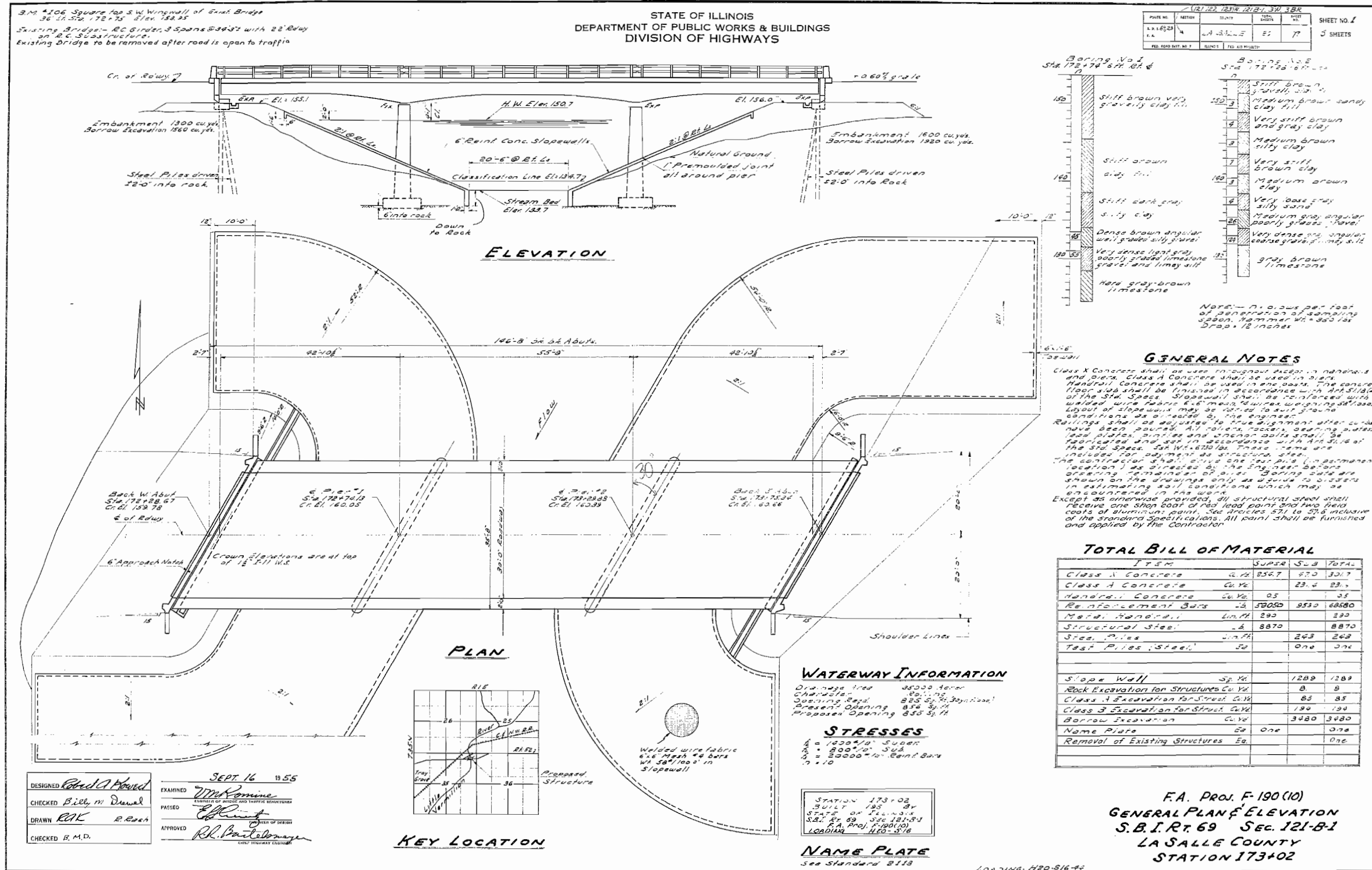


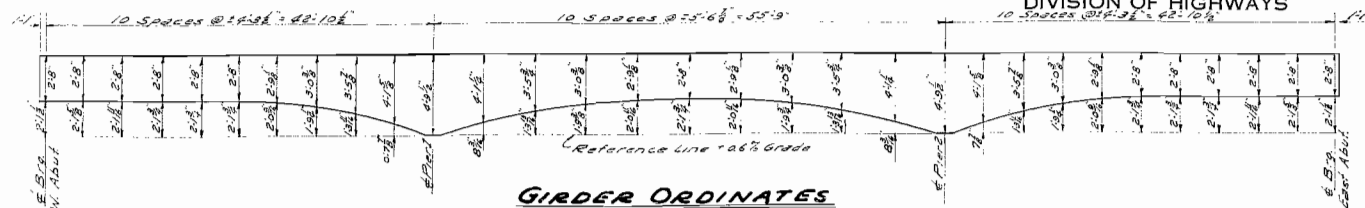
FOR INFORMATIONAL PURPOSES ONLY



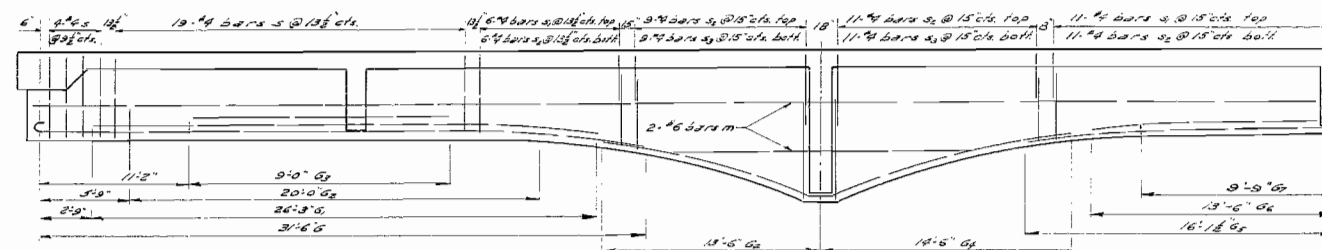
FOR INFORMATIONAL PURPOSES ONLY

STATE OF ILLINOIS
DEPARTMENT OF PUBLIC WORKS & BUILDINGS
DIVISION OF HIGHWAYS

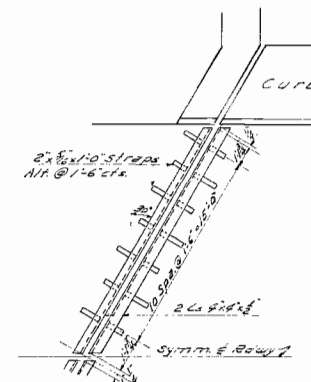
DATE: 9/16/55	SECTION: LA SALLE	DATE: 9/16/55	NO. 78	SHEET NO. 2
PROJECT: S.B.I. RT. 69 SEC. 121-B-1		DATE: 9/16/55		6 SHEETS



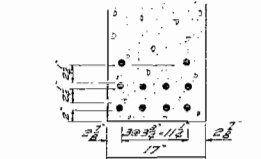
GIRDER ORDINATES
Ordinates include dead load defl. Contractor shall allow for settlement of forms and shrinkage.



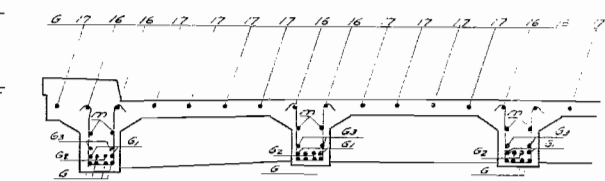
HALF ELEVATION OF GIRDERS



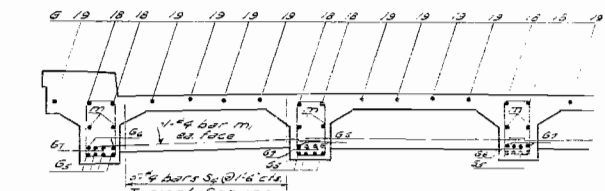
HALF PLAN EXP. JTS.



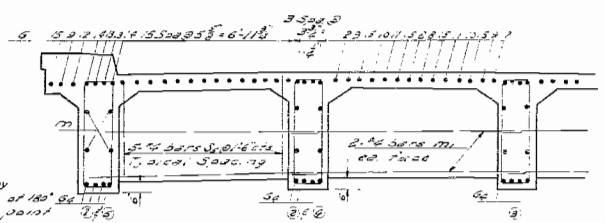
GIRDER DETAILS



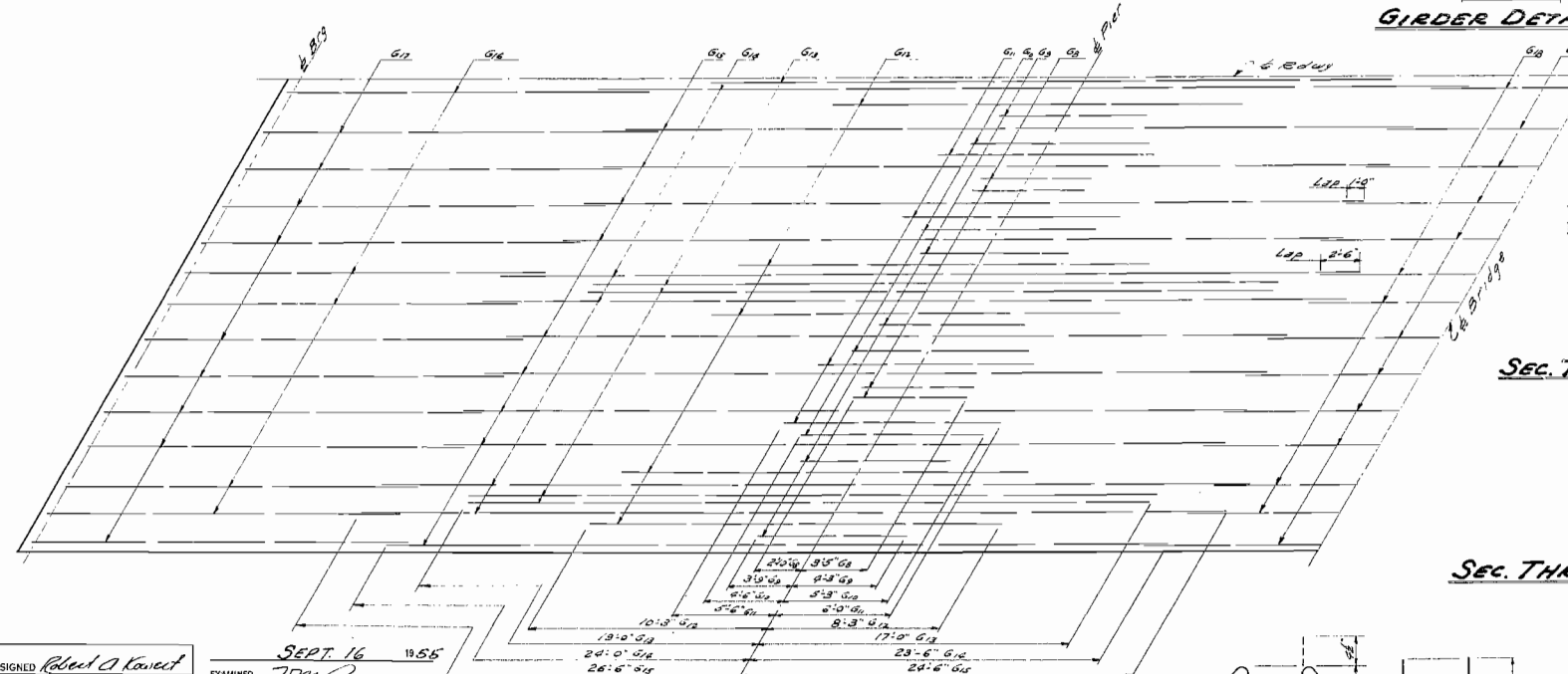
HALF SECTION @ 1/2 SPAN 1 of 3



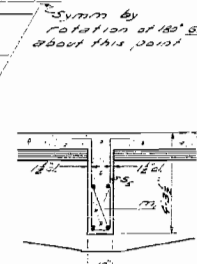
HALF SECTION @ 1/2 SPAN 2



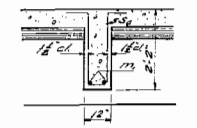
HALF SECTION @ PIER



QUARTER PLAN
Showing Reinforcement in Top Slab



SEC. THRU DIAPH. @ PIERS



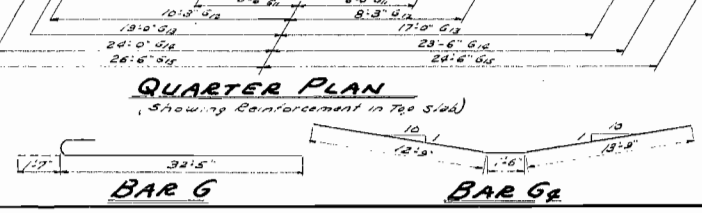
SEC. THRU INTERIOR DIAPH.

BAR LIST-GIRDER & DIAPH.

BAR NO.	SIZE	LENGTH	SHAPE	
G1	11	34'-0"	U	
G2	11	28'-3"	U	
G3	11	20'-0"	U	
G4	8	9'-0"	U	
G5	9	28'-0"	U	
G6	11	32'-3"	U	
G7	11	27'-0"	U	
G8	11	18'-5"	U	
G9	8	6'-3"	U	
G10	5	8'-0"	U	
G11	5	9'-0"	U	
G12	5	11'-6"	U	
G13	5	18'-6"	U	
G14	11	36'-0"	U	
G15	11	47'-6"	U	
G16	5	5'-0"	U	
G17	11	12'-3"	U	
G18	5	22'-9"	U	
G19	11	13'-9"	U	
G20	5	8'-9"	U	
S1	230	6	6'-3"	U
S2	170	4	4'-4"	U
S3	370	6	6'-0"	U
S4	300	4	7'-6"	U
S5	40	4	4'-4"	U
S6	40	4	9'-6"	U
S7	80	6	22'-8"	U
S8	58	4	9'-2"	U

DESIGNED: Robert A. Kowatz
CHECKED: Bill M. D...
DRAWN: R.K. R. Bush
CHECKED: G. M. ...
EXAMINED: [Signature]
PASSED: [Signature]
APPROVED: [Signature]

SEPT 16 1955



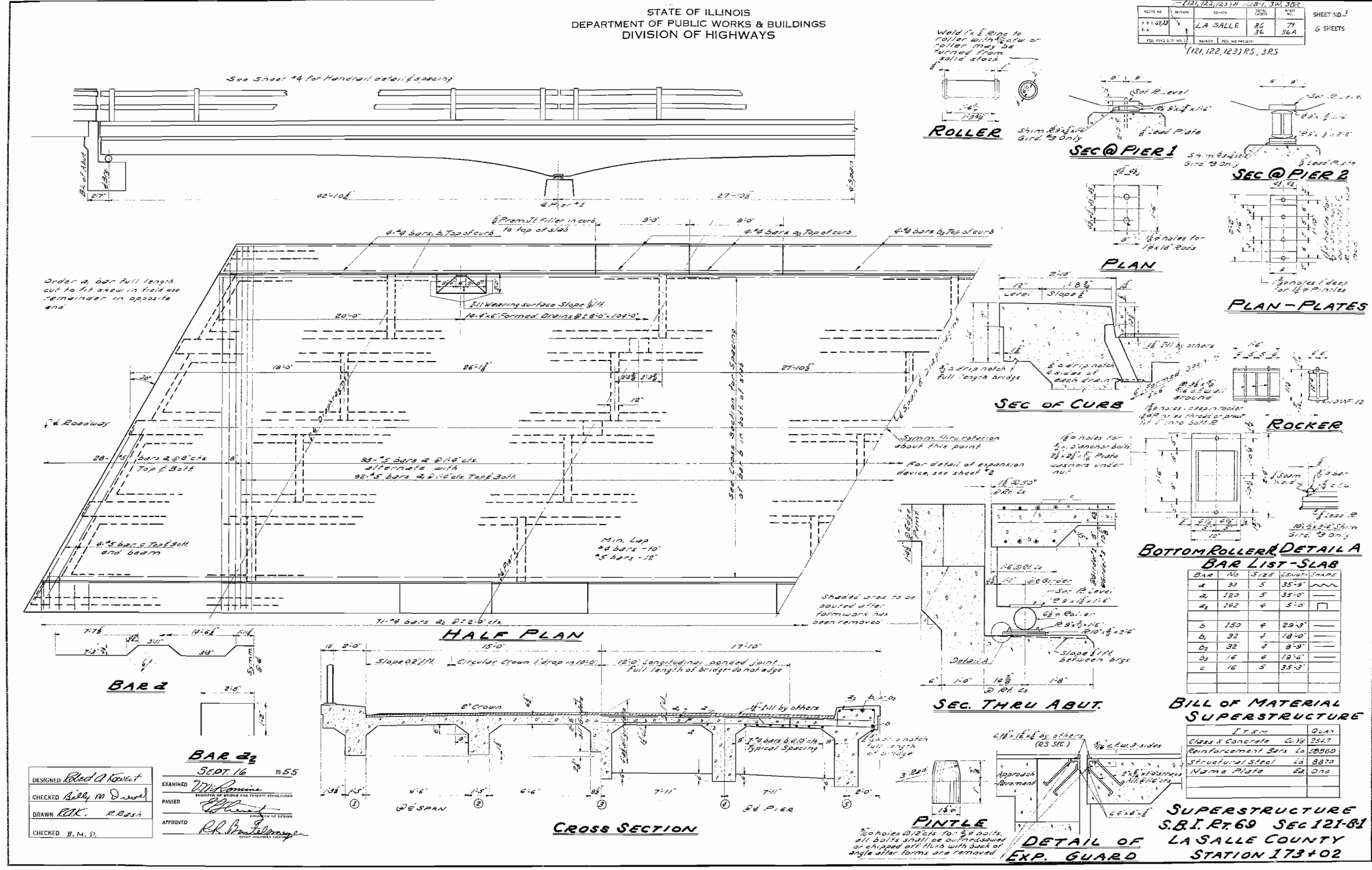
GIRDER REINFORCEMENT
S.B.I. RT. 69 SEC. 121-B-1
LA SALLE COUNTY
STATION 173+02



FOR INFORMATIONAL PURPOSES ONLY

STATE OF ILLINOIS
DEPARTMENT OF PUBLIC WORKS & BUILDINGS
DIVISION OF HIGHWAYS

ROUTE NO.	SECTION	COUNTY	STATION	SHEET NO.
121, 122, 123	RS, 3RS	LA SALLE	86 79 36A	6 SHEETS



DESIGNED *Robert A. Kowal*
 EXAMINED *W. M. Rossini*
 CHECKED *Billy M. Dwyer*
 DRAWN *E.K. R. Bosh*
 CHECKED *B. M. D.*

SEPT 16 1955

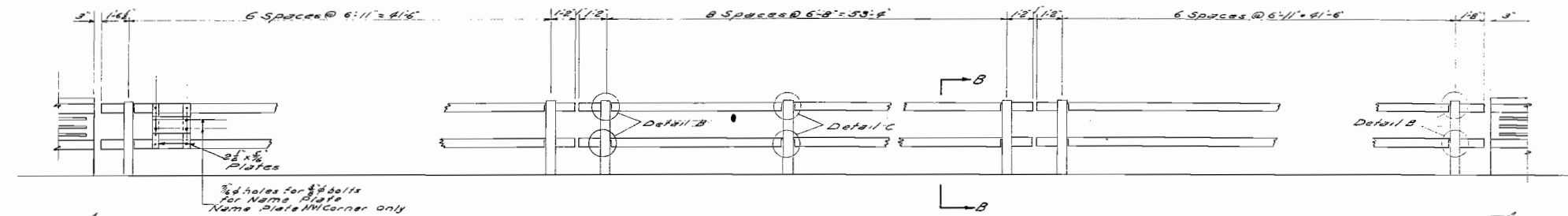
APPROVED *R. B. ...*



FOR INFORMATIONAL PURPOSES ONLY

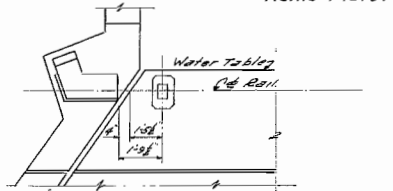
STATE OF ILLINOIS
DEPARTMENT OF PUBLIC WORKS & BUILDINGS
DIVISION OF HIGHWAYS

PROJECT NO.	SECTION	POST	SHEET NO.
LA SALLE 86	80	6	6 SHEETS

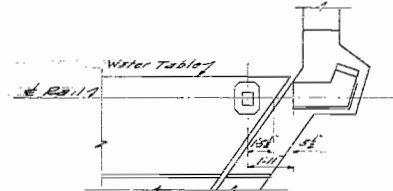


ELEVATION NORTH HANDRAIL

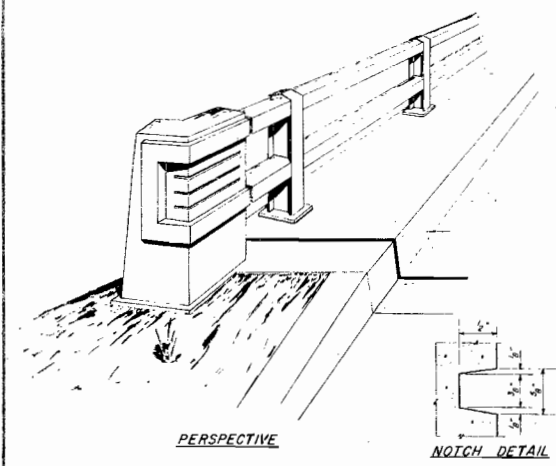
South Handrail Symm. by Rotation of 180°



PLAN OF N.W. & S.E. END POSTS

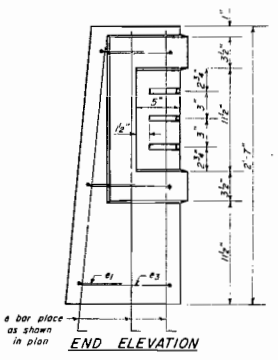


PLAN OF N.E. & S.W. END POSTS

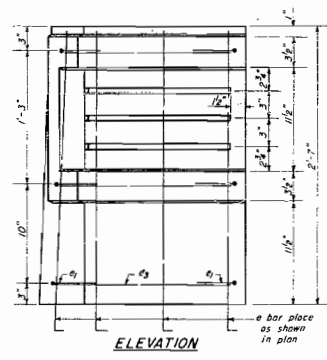


PERSPECTIVE

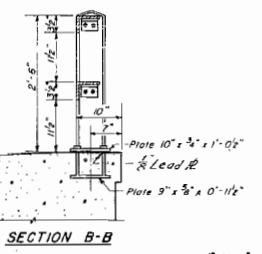
NOTCH DETAIL



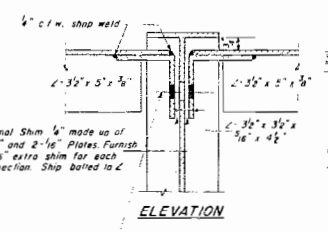
END ELEVATION



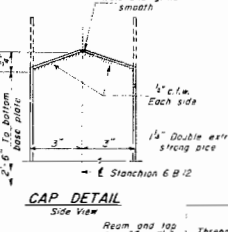
ELEVATION



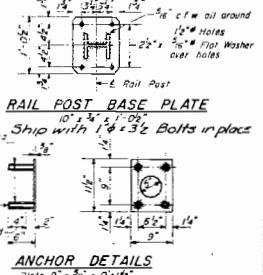
SECTION B-B



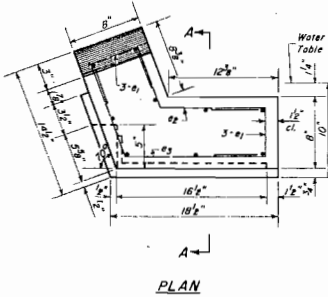
ELEVATION



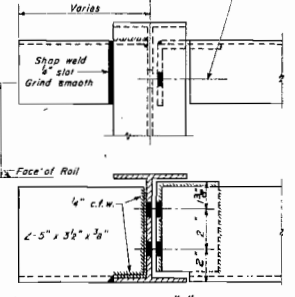
CAP DETAIL



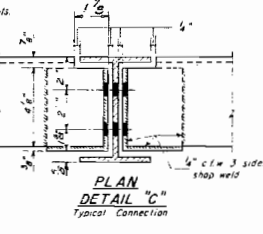
ANCHOR DETAILS



PLAN



DETAIL B-B



PLAN DETAIL Typical Connection

BILL OF MATERIAL

Bar	No	Size	Length	Shape
e	36	#5	3'-9"	
e ₁	24	#4	1'-6"	
e ₂	12	#4	1'-3"	
e ₃	12	#4	2'-0"	

Handrail Concrete Cu.YE 0.5
Reinforcement Bars LB 190
Metal Handrail Lm.Ft. 8.20

DESIGNED *James J. Rebering*
CHECKED *Robert W. D'Amico*
DRAWN *P.H.C. R. Reber*
CHECKED *R. A. D.*

SEPT. 16 1955
EXAMINED *W.M. Rebering*
PASSED *E.P. Rebering*
APPROVED *R.P. Bartolomay*

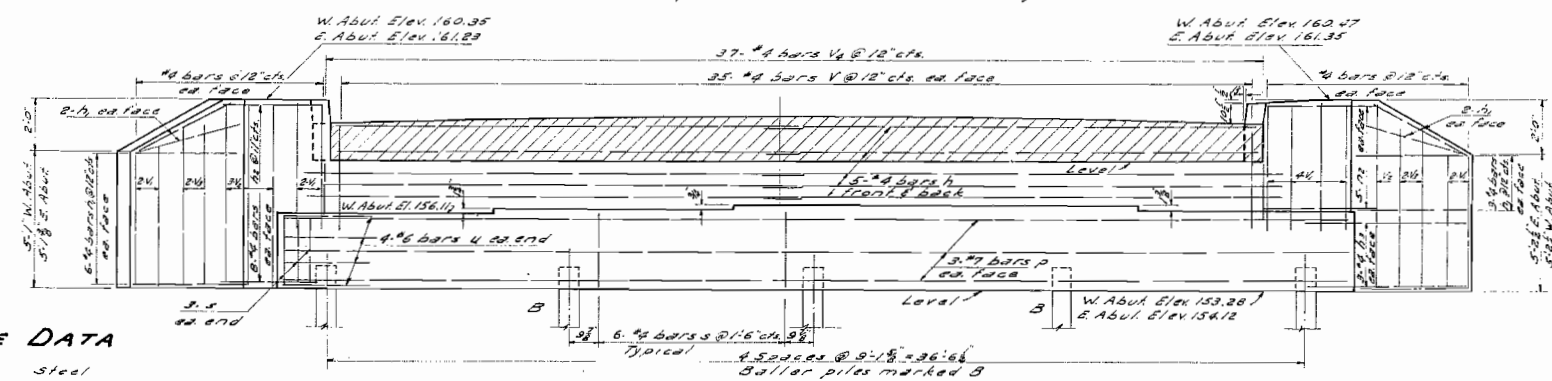
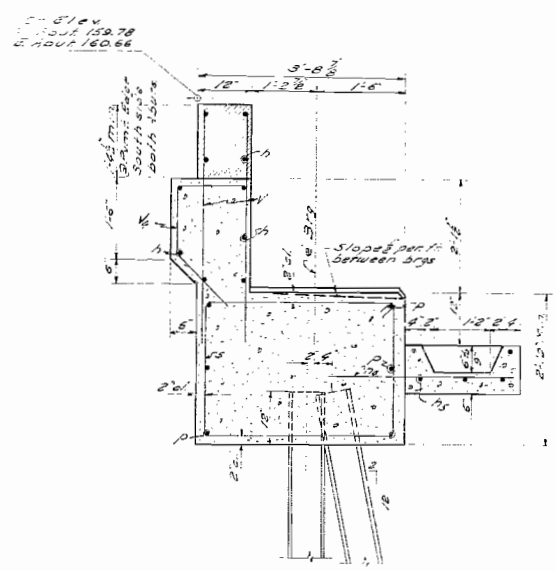
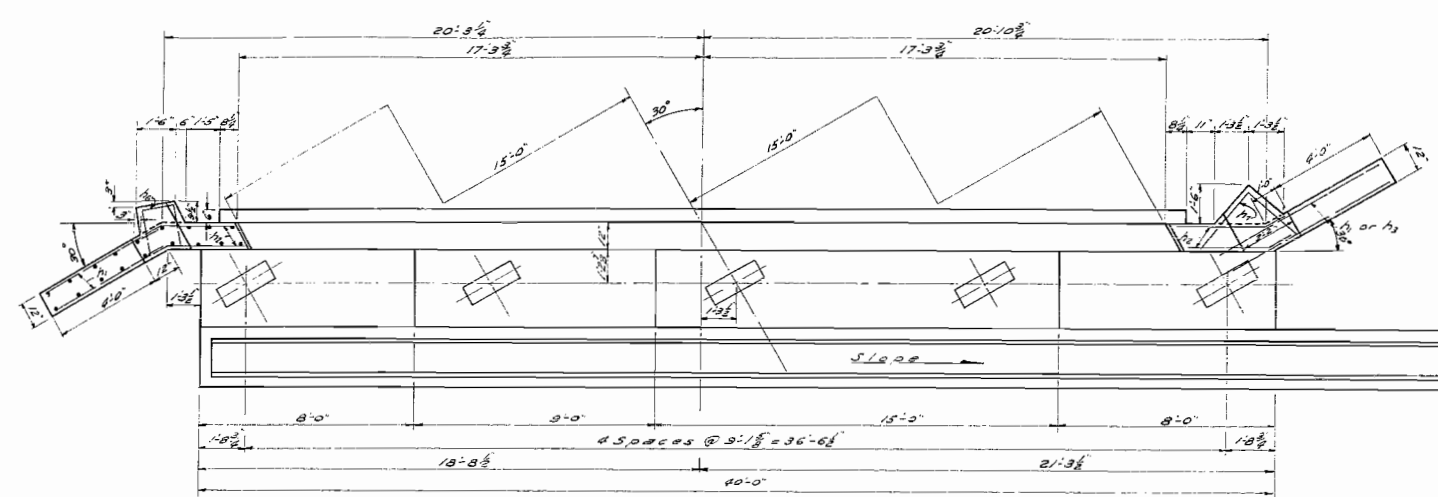
HANDRAIL DETAILS
S.I. RT. 69 Sec 121-B1
LA SALLE COUNTY
STATION 173+02



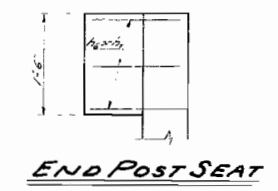
FOR INFORMATIONAL PURPOSES ONLY

STATE OF ILLINOIS
DEPARTMENT OF PUBLIC WORKS & BUILDINGS
DIVISION OF HIGHWAYS

ROUTE NO. 121	SECTION 69	COUNTY LA SALLE	POST MILE 121-B-1	SHEET NO. 81	SHEET NO. 5
TOTAL SHEETS 81				6 SHEETS	



PILE DATA
Type Steel
Section 3.BP36
Capacity 30 Ton
No. Required 10 (Includes One Test Pile)
Est. Length 27 Feet



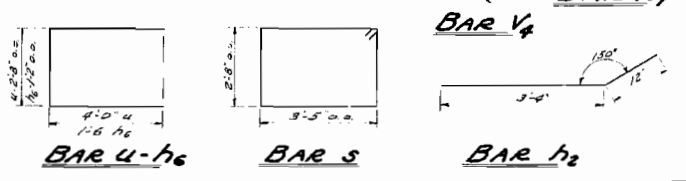
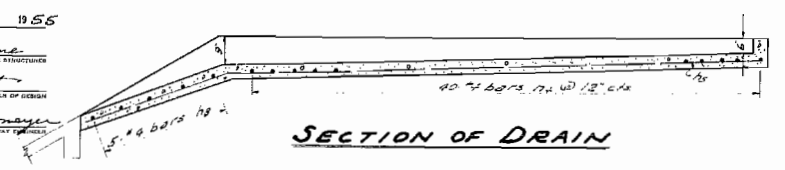
BILL OF MATERIAL-TWO ABUT.

BAR	NO	SIZE	LENGTH	SHAPE
A	40	4	13'-0"	—
B	52	4	5'-0"	—
C	52	4	6'-0"	—
D	12	4	7'-0"	—
E	80	4	6'-0"	—
F	12	4	29'-6"	—
G	12	4	2'-2"	—
H	12	4	4'-8"	—
V	160	4	6'-0"	—
W	60	4	5'-0"	—
X	6	4	6'-0"	—
Y	16	4	6'-0"	—
Z	76	4	3'-8"	—
D	12	7	33'-9"	—
S	60	3	12'-1"	—
V	16	8	10'-8"	—
H ₂	10	4	1'-9"	—
Class X Concrete G. 101 470				
Reinforcement Bars G. 3520				
Steel Piles 202 203				
Test Piles 22 274				

DESIGNED Robert A. Kowetz
CHECKED Billy M. Daniel
DRAWN C.A.K. R.R.A.S.A.
CHECKED B. M. P.

EXAMINED W.M. Romine
PASSED
APPROVED R.L. Bartschmayer

SEPT 16 1955



ABUTMENTS
S.B.I. RT. 69 SEC. 121-B-1
LA SALLE COUNTY
STA. 173+02

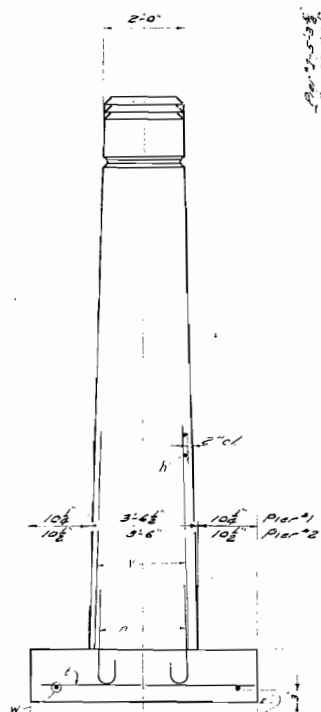


FOR INFORMATIONAL PURPOSES ONLY

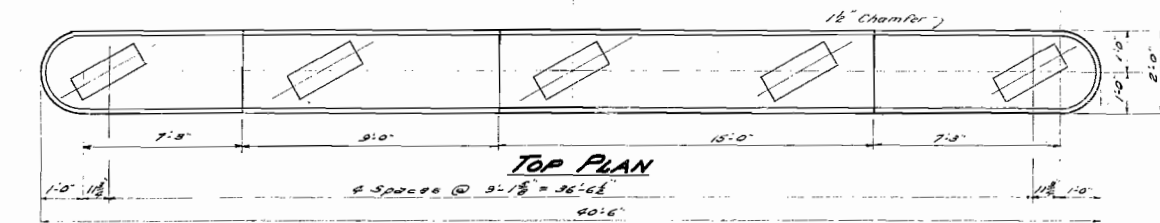
STATE OF ILLINOIS
DEPARTMENT OF PUBLIC WORKS & BUILDINGS
DIVISION OF HIGHWAYS

PROJECT NO.	LA SALLE	86	82
SHEET NO.	6		

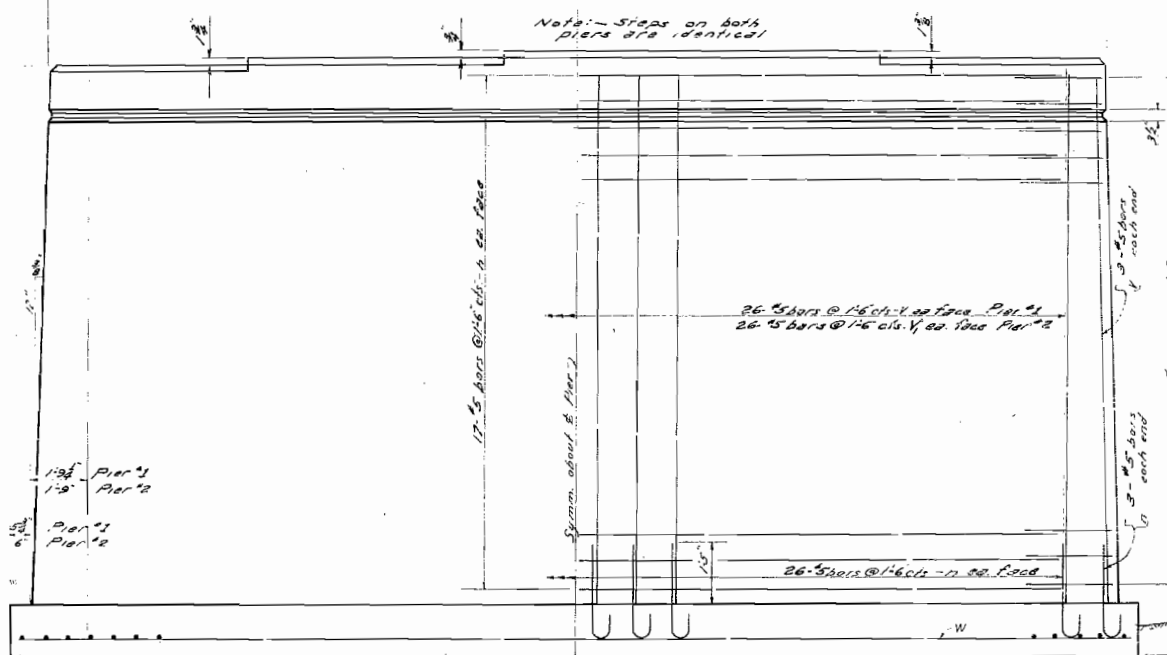
Pier #1 Sta 173+74.13 Cr Elev 160.05
Pier #2 Sta 173+29.88 Cr Elev 160.33



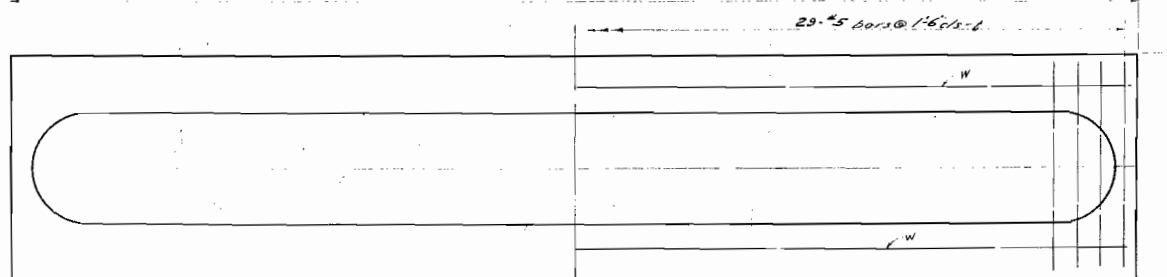
END VIEW



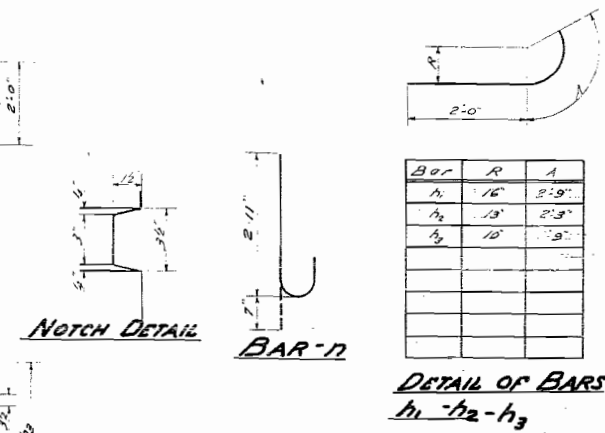
TOP PLAN



ELEVATION



FOOTING PLAN



DETAIL OF BARS
h₁ - h₂ - h₃

BILL OF MATERIAL - PIERS #1 & #2

BAR	NO.	SIZE	LENGTH	BAR	NO.	SIZE	LENGTH
V	58	5	29'-0"	h	68	5	23'-9"
V ₁	58	5	23'-6"	h ₁	48	5	4'-5"
h	116	5	3'-6"	h ₂	40	5	4'-6"
				h ₃	40	5	3'-9"
L	58	5	4'-9"				
W	8	4	22'-0"				
Class A Concrete				Cu Yds		221.4	
Reinforcement Bars				lbs		6010	

DESIGNED: *Robert A. Howard*
CHECKED: *Billy P. Damm*
DRAWN: *R.W. H. Gorton*
APPROVED: *B.M.D.*

SEPT. 16 1955
EXAMINED: *W.M. ...*
PASSED: *E. ...*
APPROVED: *R.H. ...*

PIERS
S.B.I. R.F. 69 Sec. 121-B1
LA SALLE COUNTY
STATION 173+02