

GENERAL NOTES

GENERAL NOTES

INDEX OF SHEETS

- ① WHERE SECTION OR SUBSECTION MONUMENTS ARE ENCOUNTERED, THE ENGINEER SHALL BE NOTIFIED IN A TIMELY MANNER BEFORE SUCH MONUMENTS ARE REMOVED. THE CONTRACTOR SHALL PROTECT AND CAREFULLY PRESERVE ALL PROPERTY MARKERS AND MONUMENTS UNTIL THE OWNER, AN AUTHORIZED AGENT, OR LAND SURVEYOR HAS WITNESSED AND CROSS-TIED ITS LOCATION.
- ② THE NOMINAL THICKNESS FOR BASE AND SURFACE COURSES ARE SHOWN ON THE TYPICAL SECTIONS, STANDARDS, SCHEDULES, OR SPECIAL DETAILS. THE CONSTRUCTED THICKNESS OF THE ABOVE ITEM SHALL NOT BE LESS THAN 90 PERCENT OF THE NOMINAL THICKNESS AT ANY LOCATION.
- ③ THE THICKNESS OF THE HMA MIXTURE SHOWN ON THE PLANS IS THE NOMINAL THICKNESS. DEVIATIONS FROM THE NOMINAL THICKNESS WILL BE PERMITTED WHEN SUCH DEVIATION OCCUR DUE TO IRREGULARITIES IN THE EXISTING SURFACE OR BASE ON WHICH THE HOT-MIX ASPHALT MIXTURE IS PLACED.
- ④ ANY REFERENCE TO A STANDARD IN THE PLANS SHALL BE INTERPRETED TO MEAN THE EDITION, AS INDICATED BY THE SUB-NUMBER LISTED IN THE INDEX OF SHEETS.
- ⑤ THE CONTRACTOR SHALL BE RESPONSIBLE FOR PROTECTING UTILITY PROPERTY FROM CONSTRUCTION OPERATIONS AS OUTLINED IN ARTICLE 107.31 OF THE STANDARD SPECIFICATIONS. THE JULIE NUMBER IS 800-892-0123. A MINIMUM OF FORTY-EIGHT HOURS ADVANCED NOTICE IS REQUIRED. ANY DAMAGE TO THE UNDERGROUND FACILITIES CAUSED BY THE CONTRACTOR SHALL BE REPAIRED TO THE SATISFACTION OF THE DEPARTMENT AT THE CONTRACTOR'S EXPENSE, INCLUDING TEMPORARY REPAIRS WHICH MAY BE REQUIRED TO KEEP THE FACILITY OPERATIONAL WHILE MATERIAL IS BEING OBTAINED TO MAKE PERMANENT REPAIRS.
- ⑥ THE LOCATIONS OF THOSE BURIED AND ABOVE GROUND UTILITIES SHOWN ARE APPROXIMATE, ARE SHOWN FOR CONTRACTOR INFORMATIONAL USE ONLY, AND ARE NOT TO BE REFERENCED FOR CONSTRUCTION PURPOSES. THE IMPLIED PRESENCE OR ABSENCE OF UTILITIES IS NOT TO BE CONSTRUED BY THE OWNER, ENGINEER, CONTRACTOR OR SUBCONTRACTORS TO BE AN ACCURATE AND COMPLETE REPRESENTATION OF UTILITIES THAT MAY OR MAY NOT EXIST ON THE CONSTRUCTION SITE. BURIED AND ABOVE GROUND UTILITY LOCATIONS, IDENTIFICATION, AND MARKING ARE THE SOLE RESPONSIBILITY OF THE CONTRACTOR. REROUTING, DISCONNECTION, PROTECTION, ...ETC OF ANY UTILITIES MUST BE COORDINATED BETWEEN CONTRACTOR, UTILITY COMPANY, AND OWNER. SITE SAFETY, INCLUDING THE AVOIDANCE OF HAZARDOUS ASSOCIATED WITH BURIED AND ABOVE GROUND UTILITIES REMAIN THE SOLE RESPONSIBILITY OF THE CONTRACTOR.

⑦ THE FOLLOWING MIXTURE REQUIREMENTS ARE APPLICABLE:

LOCATION(S):	IL 96	IL 96	IL 96	IL 96	IL 96	IL 96	Side Rds. & Entr.
MIXTURE USE(S):	HMA CONC SURF CSE	LEV BIND	PATCHING	HMA SHLDR (bottom lift)	HMA BC WID 10"	HMA SHLDR (top lift)	INCIDENTAL HMA SURF
AC/PG:	PG 64-22	PG 58-28	PG 64-22	PG 64-22	PG 64-22	PG 64-22	PG 64-22
DESIGN AIR VOIDS	4.0% @ N design = 50	4.0% @ N design = 50	4.0% @ N design = 50	4.0% @ N design = 50	4.0% @ N design = 50	4.0% @ N design = 50	4.0% @ N design = 50
MIXTURE COMPOSITION (Gradation Mixture)	IL 9.5	IL 9.5	IL 19.0	IL 19.0	IL 19.0	IL 9.5	IL 9.5
FRICITION AGGREGATE	MIX "C"	N/A	N/A	N/A	N/A	MIX "C"	MIX "C"
QUALITY MANAGEMENT	OPC	OPC (See NOTE)	OC/OA	OC/OA	OC/OA	OC/OA	OC/OA
SUBLOT SIZE	1,000 TONS	1,000 TONS	N/A	N/A	N/A	N/A	N/A

- ⑧ IN ADDITION TO FIELD AND AERIAL SURVEYS, PLAN DIMENSIONS AND DETAILS RELATIVE TO THE EXISTING FACILITIES HAVE BEEN TAKEN FROM EXISTING PLANS AND ARE SUBJECT TO CONSTRUCTION VARIATIONS. IT SHALL BE THE CONTRACTOR'S RESPONSIBILITY TO VERIFY SUCH DIMENSIONS AND DETAILS IN THE FIELD. SUCH VARIATIONS SHALL NOT BE A CAUSE FOR ADDITIONAL COMPENSATION DUE TO A CHANGE IN THE SCOPE OF WORK. HOWEVER, THE CONTRACTOR WILL BE PAID FOR THE QUANTITY ACTUALLY FURNISHED AT THE UNIT PRICE BID FOR THE WORK.
- ⑨ THE EXACT LOCATIONS AND SIZES OF PAVEMENT PATCHES SHALL BE DETERMINED BY THE ENGINEER IN THE FIELD.
- ⑩ ACCESS TO ALL ENTRANCES AND SIDE ROADS SHALL BE MAINTAINED AT ALL TIMES.
- ⑪ ALL SAW CUTS NECESSARY TO COMPLETE THE WORK DETAILED IN THE PLANS SHALL BE INCLUDED IN THE COST FOR THE VARIOUS PAY ITEMS INVOLVED AND SHALL BE IN ACCORDANCE WITH SECTION 440 OF THE STANDARD SPECIFICATIONS.
- ⑫ UNLESS DIRECTED BY THE ENGINEER, PAVEMENT MARKING LINES SHALL NOT BE LAID DIRECTLY OVER A LONGITUDINAL CRACK OR JOINT NOR OVER A TAR OR ASPHALT PAINTED LINE. THE EDGE OF A CENTERLINE OR LANE LINE SHALL BE OFFSET A MINIMUM DISTANCE OF 2" FROM A LONGITUDINAL CRACK OR JOINT. EDGE LINES SHALL BE APPROXIMATELY 2" FROM THE EDGE OF PAVEMENT. SEE SECTION 780 OF THE STANDARD SPECIFICATIONS FOR TRAFFIC CONTROL ITEMS.
- ⑬ THE APPROXIMATE AVERAGE THICKNESS OF 2 3/4" IS USED FOR CALCULATING THE QUANTITY FOR AGGREGATE WEDGE SHOULDERS, TYPE B.
- ⑭ NO PASSING ZONES SHALL BE VERIFIED BY THE BUREAU OF OPERATIONS. THE RESIDENT ENGINEER SHALL NOTIFY THE DISTRICT 6 BUREAU OF OPERATIONS AT (217) 782-7314 AT LEAST 14 DAYS IN ADVANCES OF FINAL PAVEMENT MARKINGS.
- ⑮ PROPOSED SUPERELEVATIONS SHOWN IN THE TYPICAL SECTIONS ARE REFERENCED FROM EXISTING PLANS AND SHALL MATCH EXISTING PAVEMENT GRADES AND TRANSITIONS, THE ENGINEER SHALL FIELD VERIFY ALL EXISTING SUPERELEVATIONS.
- ⑯ ALL AGGREGATE SURFACE COURSE SHALL BE DETERMINED IN THE FIELD BY THE ENGINEER.

RATES OF APPLICATION TABLES

THE FOLLOWING RATES OF APPLICATION HAVE BEEN ASSUMED IN CALCULATING PLAN QUANTITIES.

BITUMINOUS MATERIALS (PRIME COAT): 0.05 LBS / 50 FT (FOR MILLING)
0.025 LBS / FT (FOR LIFTS)
HMA SURFACE MIX C / BINDER (112 LBS): 0.056 TON / 50 YD • in
AGGREGATE MATERIALS: 2.05 TON / CU YD

COMMITMENTS

THE RESIDENT ENGINEER SHALL CONTACT STUDIES AND PLANS CONCERNING ANY MAJOR PLAN CHANGE TO MAKE SURE NO PREVIOUS COMMENTS (NOT LISTED) WERE MADE AFFECTING THE DESIGN AND ALLOW AN IMPROVED DESIGN FOR FUTURE PROJECTS.

1 COVER SHEET
2 INDEX OF SHEETS, LISTS OF STANDARDS, GENERAL NOTES AND COMMITMENTS
3 - 9 SUMMARY OF QUANTITIES (7)
10 - 19 SCHEDULE OF QUANTITIES (10)
20 - 25 TYPICAL SECTIONS (6)
26 CROSS-TIES AND BENCH MARKS
27 - 38 PLAN SHEETS (12)
39 - 41 STAGE CONSTRUCTION PLAN SN: 001-0052 (3)
42 - 48 BRIDGE REPAIR PLANS SN: 001-0052 (7)
49 - 50 BRIDGE REPAIR PLANS SN: 001-0074 (2)
51 PIPE CULVERT REPAIR DETAILS SN: 001-7039
52 - 56 ADA SIDEWALK RAMP DETAILS (5)
57 SUPERELEVATION DETAIL
58 - 59 ENTRANCE AND SIDEROAD DETAILS (2)

STANDARDS

000001-06	STANDARD SYMBOLS, ABBREVIATIONS, AND PATTERNS
001001-02	AREAS OF REINFORCEMENT BARS
001006	DECIMAL OF AN INCH AND OF A FOOT
424001-10	PERPENDICULAR CURB RAMPS FOR SIDEWALKS
424006-03	DIAGONAL CURB RAMPS FOR SIDEWALKS
442201-03	CLASS C & O PATCHES
606001-07	CONCRETE CURB TYPE B AND COMBINATION CONCRETE CURB AND GUTTER
630001-12	STEEL PLATE BEAM GUARDRAIL
630301-08	SHOULDER WIDENING FOR TYPE I (SPECIAL) GUARDRAIL TERMINALS
631031-15	TRAFFIC BARRIER TERMINAL, TYPE 6
643001-02	SAND MODULE IMPACT ATTENUATORS
667101-02	PERMANENT SURVEY MARKER
701001-02	OFF-ROAD OPERATIONS, 2L, 2W, MORE THAN 15' (4.5 m) AWAY
701006-05	OFF-ROAD OPERATIONS, 2L, 2W, 15' (4.5 m) TO 24" (600 mm) FROM PAVEMENT EDGE
701201-04	LANE CLOSURE, 2L, 2W, DAY ONLY, FOR SPEEDS ≥ 45 MPH
701306-04	LANE CLOSURE, 2L, 2W, SLOW MOVING OPERATIONS ONLY, FOR SPEEDS ≥ 45 MPH
701311-03	LANE CLOSURE, 2L, 2W, MOVING OPERATIONS - DAY ONLY
701321-17	LANE CLOSURE, 2L, 2W, BRIDGE REPAIR WITH BARRIER
701326-04	LANE CLOSURE, 2L, 2W, PAVEMENT WIDENING, FOR SPEEDS ≥ 45 MPH
701336-06	LANE CLOSURE, 2L, 2W, WORK AREAS IN SERIES, FOR SPEEDS ≥ 45 MPH
701501-06	URBAN LANE CLOSURE, 2L, 2W, UNDIVIDED
701701-10	URBAN LANE CLOSURE, MULTILANE INTERSECTION
701801-06	SIDEWALK, CORNER, OR CROSSWALK CLOSURE
701901-07	TRAFFIC CONTROL DEVICES
704001-08	TEMPORARY CONCRETE BARRIER
780001-05	TYPICAL PAVEMENT MARKING
781001-04	TYPICAL APPLICATIONS OF RAISED REFLECTIVE PAVEMENT MARKINGS
782006	GUARDRAIL AND BARRIER WALL REFLECTOR MOUNTING DETAILS

DISTRICT SIX

EXAMINED February 16th 20 18
John C. Williams
OPERATIONS ENGINEER

EXAMINED February 22nd 20 18
James A. McDaniel
PROJECT IMPLEMENTATION ENGINEER

EXAMINED February 21 20 18
Colleen P. Myers
PROGRAM DEVELOPMENT ENGINEER

△ REV. 10-22-2018

MICHELLE L. ENGLISH

USLR #14141 = c3br/ars	DESIGNED = RSC	REVISED =
PLOT SCALE = 10.0000' / in.	DRAWN = RSC	REVISED =
PLOT DATE = 3/21/2018	CHECKED =	REVISED =
	DATE =	REVISED =

**STATE OF ILLINOIS
DEPARTMENT OF TRANSPORTATION**

**INDEX OF SHEETS &
GENERAL NOTES**

SCALE: NTS SHEET 1 OF 1 SHEETS STA. TO STA.

F.A.P. RTE.	SECTION	COUNTY	TOTAL SHEETS	SHEET NO
506	(126)RS-3,BRR,BDR,BJR,SCR	ADAMS	59	2
				CONTRACT NO. 72C29
ILLINOIS FED. AID PROJECT				

MODEL: C:\p1\1108\EBID\NTEG\Illinois.gov\PWD\DOT\Documents\DOT_Offices\District 8\Projects\DE72C29\CADD\DATA\CAD\Sheet\DE72C29-plr-500.dgn
 FILE NAME: P:\1108\EBID\NTEG\Illinois.gov\PWD\DOT\Documents\DOT_Offices\District 8\Projects\DE72C29\CADD\DATA\CAD\Sheet\DE72C29-plr-500.dgn

CODE NO.	ITEM	UNIT	TOTAL QUANTITY	CONSTRUCTION CODE							
				6-00788-0000	6-00788-0200	6-00788-0200	6-00788-0200	6-00788-0200	6-00788-0200		
				80 % FEDERAL 20 % STATE ROADWAY	80 % FEDERAL 20 % STATE BRIDGE	80 % FEDERAL 20 % STATE BRIDGE	80 % FEDERAL 20 % STATE PIPE CULVERT	80 % FEDERAL 20 % STATE BOX CULVERT	80 % FEDERAL 20 % STATE BOX CULVERT		
				0005 3P	0059 001-0052	0047 001-0074	0004 001-7039	0004 001-7038	0004 001-7037		
20200100	EARTH EXCAVATION	CU YD	214		110	104					
20200600	EXCAVATING AND GRADING EXISTING SHOULDER	UNIT	108	90	9	9					
20700110	POROUS GRANULAR EMBANKMENT	TON	8				8				
25000100	SEEDING, CLASS 1	ACRE	0.1	0.1							
25100115	MULCH, METHOD 2	ACRE	0.1	0.1							
28100707	STONE DUMPED RIPRAP, CLASS A4	SQ YD	413		173	138	69	11		22	
28100709	STONE DUMPED RIPRAP, CLASS A5	SQ YD	128		128						
35600716	HOT-MIX ASPHALT BASE COURSE WIDENING, 10"	SQ YD	771		396	375					
40200800	AGGREGATE SURFACE COURSE, TYPE B	TON	58	58							
40600290	BITUMINOUS MATERIALS (TACK COAT)	POUND	50,163	50,163							
40600625	LEVELING BINDER (MACHINE METHOD), N50	TON	2,957	2,957							
40600627	LEVELING BINDER (MACHINE METHOD), 1L 9.5FG, N50	TON	2,957	2,957							
40600982	HOT-MIX ASPHALT SURFACE REMOVAL - BUTT JOINT	SQ YD	2,819	2,819							
40600990	TEMPORARY RAMP	SQ YD	87	87							



REV. 10-22-2018

USER NAME = cabrerars	DESIGNED - RSC	REVISED -
	DRAWN - RSC	REVISED -
PLOT SCALE = 2.0000' / in.	CHECKED -	REVISED -
PLOT DATE = 3/17/2018	DATE -	REVISED -

**STATE OF ILLINOIS
DEPARTMENT OF TRANSPORTATION**

SUMMARY OF QUANTITIES

SCALE: NTS SHEET 1 OF 7 SHEETS STA. TO STA.

F.A.P. RTE.	SECTION	COUNTY	TOTAL SHEETS	SHEET NO.
506	(126)RS-3,BRR,BDR,BJR,SCR	ADAMS	59	3
CONTRACT NO. 72C29				
ILLINOIS FED. AID PROJECT				

MODEL: Default
 FILE NAME: P:\11108\B&E\ID\ITEC\Illinois.gov\PIWDOT\Documents\DOT Offices\District 8\Projects\ID72C29\CADD\DATA\CAD\Sheets\ID72C29-ph-500.dgn

CODE NO.	ITEM	UNIT	TOTAL QUANTITY	CONSTRUCTION CODE						
				6-00788-0000	6-00788-0200	6-00788-0200	6-00788-0200	6-00788-0200	6-00788-0200	
				80 % FEDERAL 20 % STATE	80 % FEDERAL 20 % STATE	80 % FEDERAL 20 % STATE	80 % FEDERAL 20 % STATE	80 % FEDERAL 20 % STATE	80 % FEDERAL 20 % STATE	
				ROADWAY	BRIDGE	BRIDGE	PIPE CULVERT	BOX CULVERT	BOX CULVERT	
				0005	0059	0047	0004	0004	0004	
RURAL				3P	001-0052	001-0074	001-7039	001-7038	001-7037	
70102635	TRAFFIC CONTROL AND PROTECTION, STANDARD 701701	L SUM	1	1						
70102640	TRAFFIC CONTROL AND PROTECTION, STANDARD 701801	L SUM	1	1						
70103815	TRAFFIC CONTROL SURVEILLANCE	CAL DAY	15	15						
70106500	TEMPORARY BRIDGE TRAFFIC SIGNALS	EACH	1		1					
70106700	TEMPORARY RUMBLE STRIPS	EACH	12		12					
70300100	SHORT TERM PAVEMENT MARKING	FOOT	7,136	7,136						
70300150	SHORT TERM PAVEMENT MARKING REMOVAL	SQ FT	793	793						
70300230	TEMPORARY PAVEMENT MARKING - LINE 5"	FOOT	78,696	78,696						
70400100	TEMPORARY CONCRETE BARRIER	FOOT	537.5		537.5					
70400200	RELOCATE TEMPORARY CONCRETE BARRIER	FOOT	537.5		537.5					
70500100	TEMPORARY STEEL PLATE BEAM GUARDRAIL, TYPE A	FOOT	112.5				112.5			
70500615	TEMPORARY TRAFFIC BARRIER TERMINAL, TYPE 1	EACH	1				1			
70600260	IMPACT ATTENUATORS, TEMPORARY (FULLY REDIRECTIVE, NARROW), TEST LEVEL 3	EACH	2		2					
70600330	IMPACT ATTENUATORS, RELOCATE (FULLY REDIRECTIVE), TEST LEVEL 3	EACH	2		2					



REV. 10-22-2018

USER NAME = cabrerars	DESIGNED - RSC	REVISED -
	DRAWN - RSC	REVISED -
PLOT SCALE = 2.0000' / in.	CHECKED -	REVISED -
PLOT DATE = 3/17/2018	DATE -	REVISED -

**STATE OF ILLINOIS
DEPARTMENT OF TRANSPORTATION**

SUMMARY OF QUANTITIES

SCALE: NTS SHEET 5 OF 7 SHEETS STA. TO STA.

F.A.P. RTE.	SECTION	COUNTY	TOTAL SHEETS	SHEET NO.
506	(126)RS-3,BRR,BDR,BJR,SCR	ADAMS	59	7
CONTRACT NO. 72C29				
ILLINOIS FED. AID PROJECT				

MODEL: Default
 FILE NAME: P:\111084\EBID\NTEG\Illinois.gov\PIWDOT\Documents\DOT Offices\District 8\Projects\DE72C29\CADD\data\CAD\sheet\DE72C29-ph-500.dgn

CODE NO.	ITEM	UNIT	TOTAL QUANTITY	CONSTRUCTION CODE					
				6-00788-0000	6-00788-0200	6-00788-0200	6-00788-0200	6-00788-0200	6-00788-0200
				80 % FEDERAL 20 % STATE	80 % FEDERAL 20 % STATE	80 % FEDERAL 20 % STATE	80 % FEDERAL 20 % STATE	80 % FEDERAL 20 % STATE	80 % FEDERAL 20 % STATE
				ROADWAY	BRIDGE	BRIDGE	PIPE CULVERT	BOX CULVERT	BOX CULVERT
				0005	0059	0047	0004	0004	0004
RURAL				3P	001-0052	001-0074	001-7039	001-7038	001-7037
* 72501000	TERMINAL MARKER - DIRECT APPLIED	EACH	8		4	4			
* 78001120	PAINT PAVEMENT MARKING - LINE 5"	FOOT	78,696	78,696					
* 78100100	RAISED REFLECTIVE PAVEMENT MARKER	EACH	301	301					
* 78200005	GUARDRAIL REFLECTORS, TYPE A	EACH	20		9	11			
78300200	RAISED REFLECTIVE PAVEMENT MARKER REMOVAL	EACH	301	301					
X0322469	PLUG EXISTING FLOOR DRAINS	EACH	62		62				
X0327979	PAVEMENT MARKING REMOVAL - GRINDING	SQ FT	314		314				
X5000015	REMOVE AND RE-INSTALL PIPE CULVERTS	FOOT	17				17		
X6670105	PERMANENT SURVEY MARKERS (SPECIAL)	EACH	20	20					⚠
X7050167	TEMPORARY TRAFFIC BARRIER TERMINAL, TYPE 1, SPECIAL (TANGENT)	EACH	1				1		
X7050169	TEMPORARY TRAFFIC BARRIER TERMINAL, TYPE 1, SPECIAL (FLARED)	EACH	1				1		
X7200201	WIDTH RESTRICTION SIGNING	L SUM	1		1				
Z0012130	BRIDGE DECK SCARIFICATION 3/4"	SQ YD	1,007		1,007				
Z0012164	BRIDGE DECK MICROSILICA CONCRETE OVERLAY 2 1/2"	SQ YD	1,007		1,007				
Z0016001	DECK SLAB REPAIR (FULL DEPTH, TYPE I)	SQ YD	4		4				
Z0016002	DECK SLAB REPAIR (FULL DEPTH, TYPE II)	SQ YD	8		8				

* SPECIALTY ITEM

⚠ REV. 10-22-2018

USER NAME = cabrerars	DESIGNED - RSC	REVISED -
DRAWN - RSC	CHECKED -	REVISED -
PLOT SCALE = 2.0000' / in.	DATE -	REVISED -
PLOT DATE = 3/20/2018		

**STATE OF ILLINOIS
DEPARTMENT OF TRANSPORTATION**

SUMMARY OF QUANTITIES

SCALE: NTS SHEET 6 OF 7 SHEETS STA. TO STA.

F.A.P. RTE.	SECTION	COUNTY	TOTAL SHEETS	SHEET NO.
506	(126)RS-3,BRR,BDR,BJR,SCR	ADAMS	59	8
CONTRACT NO. 72C29				
ILLINOIS FED. AID PROJECT				

REMOVING INLETS

LOCATION	QUANTITY (EACH)
[F.A.P. 506 (IL 96)]	-
Turtle St. Intrscn / NE Quad	1
PROJECT TOTAL (3P)	1

STORM SEWER REMOVAL, 12"

LOCATION	QUANTITY (FOOT)
[F.A.P. 506 (IL 96)]	-
Turtle St. Intrscn / NE Quad	32.0
PROJECT TOTAL (3P)	32

FRAME AND GRATES TO BE ADJUSTED

LOCATION	QUANTITY (EACH)
[F.A.P. 506 (IL 96)]	-
W. Main St. Intrscn / NW Quad	1
PROJECT TOTAL (3P)	1

HANDICAP RAMP SCHEDULE

LOCATION (HANDICAP RAMPS)	SIDEWALK REMOVAL	CC&G REMOVAL	DETECTABLE WARNINGS	PCC SIDEWALK 4 INCH	COMB CC&G TB6. 24
	(SQ FT)	(FOOT)	(SQ FT)	(SQ FT)	(FOOT)
[F.A.P. 506 (IL 96)]	-	-	-	-	-
(LIMA)	-	-	-	-	-
(STREET "A" - STA 377+25.50 RT)	-	-	-	-	-
NE QUAD	112.45	13.62	10	143.83	13.62
(N 2850th AVE. / W. MEYER RD.)	-	-	-	-	-
(STA 382+79.29 LT)	-	-	-	-	-
SW QUAD	100.19	19.98	12.48	125.61	19.98
NW QUAD	166.17	18.51	10	193.18	18.51
(N 2850th AVE. / TURTLE ST.)	-	-	-	-	-
(STA 385+43.38 RT)	-	-	-	-	-
SE QUAD	254.72	21.50	15.43	368.32	21.50
NE QUAD	409.25	40.00	13.15	517.98	40.00
(W. JEFFERSON ST. - STA 394+00.00 LT)	-	-	-	-	-
SW QUAD	72.02	14.18	10	80.49	14.18
NW QUAD	84.71	17.75	10	87.23	17.75
(W. MAIN ST. / STA 397+39.59 LT)	-	-	-	-	-
SW QUAD	176.93	32.41	20	218.12	32.41
NW QUAD	122.54	33.51	18	124.19	33.51
PROJECT TOTAL	1,499	212	119	1,859	212

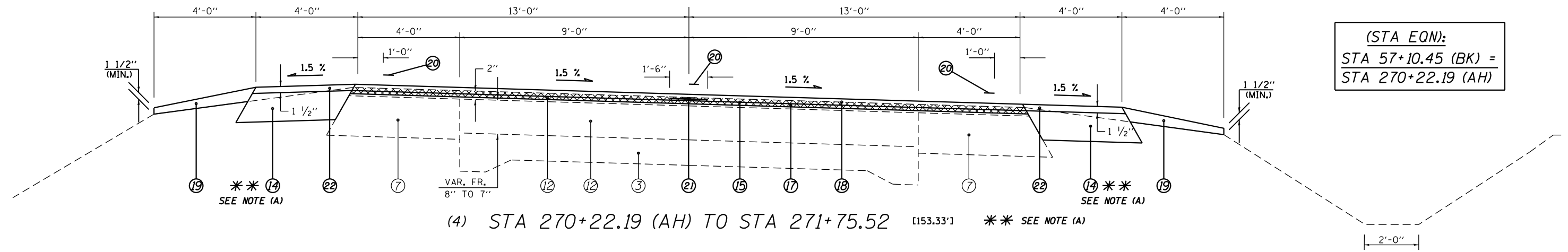
TEMPORARY GUARDRAIL SCHEDULE ¹

LOCATION	LENGTH (FOOT)	TEMP TRBT T1 SPL TAN	TEMP SPBGR TA	TEMP TRBT T1 SPL FLAR
		(EACH)	(FOOT)	(EACH)
[F.A.P. 506 (IL 96)]	-	-	-	-
346+60.00 TO 347+10.00 LT	50.0	1	-	-
347+10.00 TO 348+22.50 LT	112.5	-	112.5	-
348+22.50 TO 348+72.50 LT	50.0	-	-	1
PROJECT TOTAL (SN 001-7039)	-	1	112.5	1

MODEL: Default
 FILE NAME: P:\1108\BARDNET\EG_IL\inois.gov\PWD\DOT\Documents\DOT_Offices\District 8\Projects\0672C29\CADD\DATA\CAD\sheet\0672C29-sh-schedule.dgn

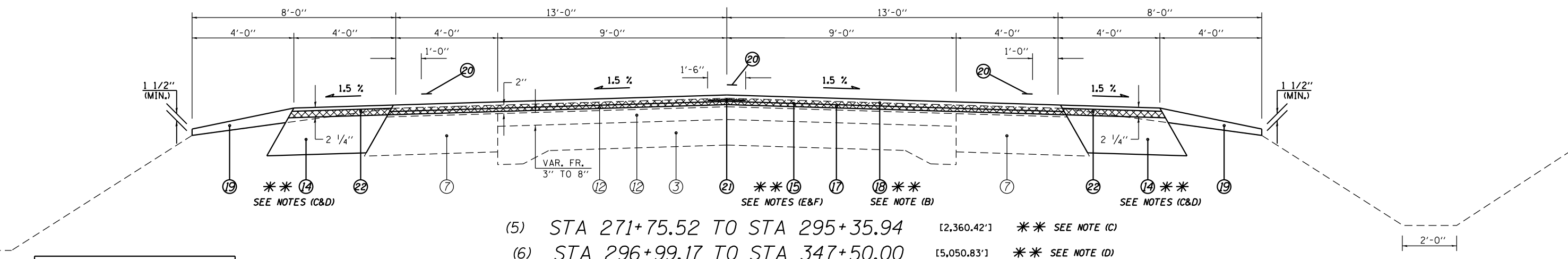
¹ REV. 10-22-2018

☉ F.A.P. 506 (IL 96)



(4) STA 270+22.19 (AH) TO STA 271+75.52 [153.33'] ** SEE NOTE (A)

☉ F.A.P. 506 (IL 96)



(5) STA 271+75.52 TO STA 295+35.94 [2,360.42'] ** SEE NOTE (C)
 (6) STA 296+99.17 TO STA 347+50.00 [5,050.83'] ** SEE NOTE (D)

BRIDGE REPAIR
 S.N.: 001-0074
 (over WHITE OAK CREEK)
 STA 295+50.94 TO
 STA 296+84.17

LEGEND

- | | |
|--|--|
| ① EXIST. BITUMINOUS BASE COURSE, 8" | ⑬ PROP. HOT-MIX ASPHALT BASE COURSE WIDENING, 10" |
| ② EXIST. BITUMINOUS CONCRETE PAVEMENT, TYPE 2 13" | ⑭ PROP. HOT-MIX ASPHALT SHOULDERS, 6 1/2" (SQ YD) |
| ③ EXIST. PCC PAVEMENT 9"-6"-9" | ⑮ PROP. HOT-MIX ASPHALT SURFACE REMOVAL, 1 1/2" |
| ④ EXIST. SUB-BASE GRANULAR MATERIAL, 4" | ⑯ PROP. HOT-MIX ASPHALT SURFACE REMOVAL, 2 1/4" |
| ⑤ EXIST. SUB-BASE GRANULAR, TYPE A 12" | ⑰ PROP. LEVELING BINDER (MACHINE METHOD), N50 3/4" |
| ⑥ EXIST. ROCKFILL | ⑱ PROP. HOT-MIX ASPHALT SURFACE COURSE, MIX C, N50 1 1/2" |
| ⑦ EXIST. BITUMINOUS CONCRETE BINDER COURSE, 13 1/2" & VAR. | ⑲ PROP. AGGREGATE WEDGE SHOULDER, TYPE B |
| ⑧ EXIST. PIPE UNDERDRAINS FABRIC LINED TRENCH 4" | ⑳ PROP. PAINT PAVEMENT MARKING - LINE 5" |
| ⑨ EXIST. BITUMINOUS SHOULDERS, 8" | ㉑ PROP. LONGITUDINAL JOINT SEALANT (INSTALLED BETWEEN LEV BIND & SURF) |
| ⑩ EXIST. CONCRETE GUTTER, TYPE A | ㉒ PROP. HMA SHOULDERS (TONS) |
| ⑪ EXIST. COMB. CONCRETE CURB AND GUTTER, TYPE B-6.24 | |
| ⑫ EXIST. BITUMINOUS OVERLAY | |

- ** NOTE:**
- (A) HMA SHLDR, 6 1/2" ENDS AT STA. 276+28.00 LT & RT.
- (B) ROCKFILL LOCATED UNDER APPROACH SLABS
 STA. 281+60.00 TO STA. 286+25.00, LT - STA. 286+40.00, RT
 STA. 291+15.00 TO STA. 295+98.00, RT & LT
 STA. 296+40.00 TO STA. 310+15.00 LT - 310+25.00 RT
- (C) HMA BC WID, 10" FR. STA. 292+80.00 TO 295+50.94 LT & RT
- (D) HMA BC WID, 10" FR. STA. 296+84.17 TO 298+35.00 LT & RT

△ REV. 10-22-2018

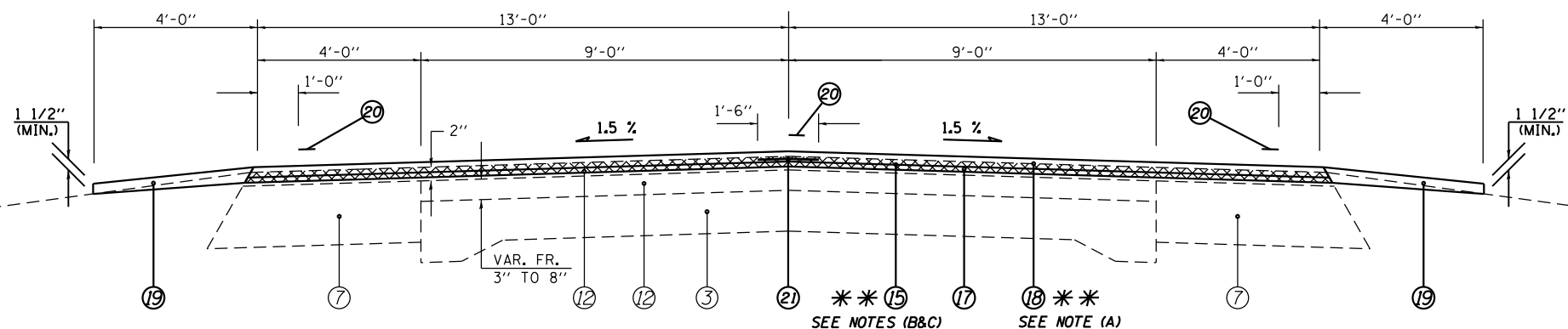
**STATE OF ILLINOIS
 DEPARTMENT OF TRANSPORTATION**

TYPICAL SECTIONS

USER NAME = cabrerars	DESIGNED - RSC	REVISED -	F.A.P. RTE. 506	SECTION *	COUNTY ADAMS	TOTAL SHEETS 59	SHEET NO. 21
DRAWN - RSC	CHECKED -	REVISED -	SCALE: NTS	SHEET 2 OF 6 SHEETS	ILLINOIS	FED. AID PROJECT	CONTRACT NO. 72C29
PLOT SCALE = 100,0000' / in.	DATE -	REVISED -	STA. 270+22.19 TO STA. 347+50.00		(126)RS-3,BRR,BDR,BJR,SCR		
PLOT DATE = 10/3/2018							

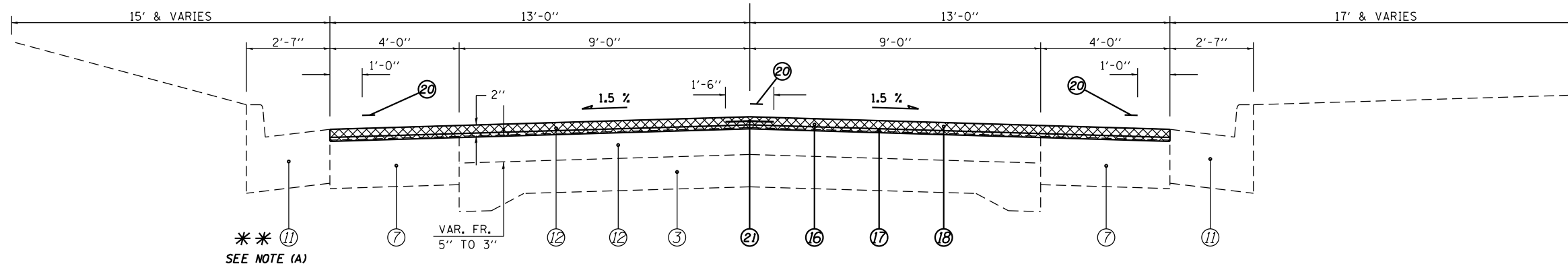
MODEL: Default
 FILE: \\mspc01\p01\B&E\BIDDING\Illinois\p01\BIDDING\Documents\DOT Office\Director @Project\0672C29\CADDData\CAD\Sheet\0672C29-21-typrcal.dgn

☉ F.A.P. 506 (IL 96)



(14) STA 370+50.00 TO STA 373+11.20 [261.20'] ** SEE NOTE (E)
 (18) STA 411+75.60 TO STA 465+75.00 [5,399.40'] ** SEE NOTE (F)

☉ F.A.P. 506 (IL 96)



(15) STA 373+11.20 TO STA 389+20.70 [1,609.50']

LEGEND

- | | |
|--|--|
| ① EXIST. BITUMINOUS BASE COURSE, 8" | ⑬ PROP. HOT-MIX ASPHALT BASE COURSE WIDENING, 10" |
| ② EXIST. BITUMINOUS CONCRETE PAVEMENT, TYPE 2 13" | ⑭ PROP. HOT-MIX ASPHALT SHOULDERS, 6 1/2" (SQ YD) |
| ③ EXIST. PCC PAVEMENT 9"-6"-9" | ⑮ PROP. HOT-MIX ASPHALT SURFACE REMOVAL, 1 1/2" |
| ④ EXIST. SUB-BASE GRANULAR MATERIAL, 4" | ⑯ PROP. HOT-MIX ASPHALT SURFACE REMOVAL, 2 1/4" |
| ⑤ EXIST. SUB-BASE GRANULAR, TYPE A 12" | ⑰ PROP. LEVELING BINDER (MACHINE METHOD), N50 3/4" |
| ⑥ EXIST. ROCKFILL | ⑱ PROP. HOT-MIX ASPHALT SURFACE COURSE, MIX C, N50 1 1/2" |
| ⑦ EXIST. BITUMINOUS CONCRETE BINDER COURSE, 13 1/2" & VAR. | ⑲ PROP. AGGREGATE WEDGE SHOULDER, TYPE B |
| ⑧ EXIST. PIPE UNDERDRAINS FABRIC LINED TRENCH 4" | ⑳ PROP. PAINT PAVEMENT MARKING - LINE 5" |
| ⑨ EXIST. BITUMINOUS SHOULDERS, 8" | ㉑ PROP. LONGITUDINAL JOINT SEALANT (INSTALLED BETWEEN LEV BIND & SURF) |
| ⑩ EXIST. CONCRETE GUTTER, TYPE A | ㉒ PROP. HMA SHOULDERS (TONS) |
| ⑪ EXIST. COMB. CONCRETE CURB AND GUTTER, TYPE B-6.24 | |
| ⑫ EXIST. BITUMINOUS OVERLAY | |

** NOTE:

- (A) ROCKFILL LOCATED UNDER APPROACH SLABS
 STA. 370+50.00 TO 373+40.00 LT & RT
 STA. 444+55.00 TO 447+25.00 LT & RT
- (B) MILLING DEPTH VAR. FR. 1 1/2" TO 2 1/4" -
 FR. STA. 372+96.20 TO 373+11.20.
- (C) MILLING DEPTH VAR. FR. 2 1/4" TO 1 1/2" -
 FR. STA. 411+75.60 TO 411+90.60.
- (D) PROP. HMA & AGGR WEDGE SHLDS & EXIST.
 CC&G BEGIN AT STA. 373+42.90 LT.

△ REV. 10-22-2018

STATE OF ILLINOIS
 DEPARTMENT OF TRANSPORTATION

TYPICAL SECTIONS

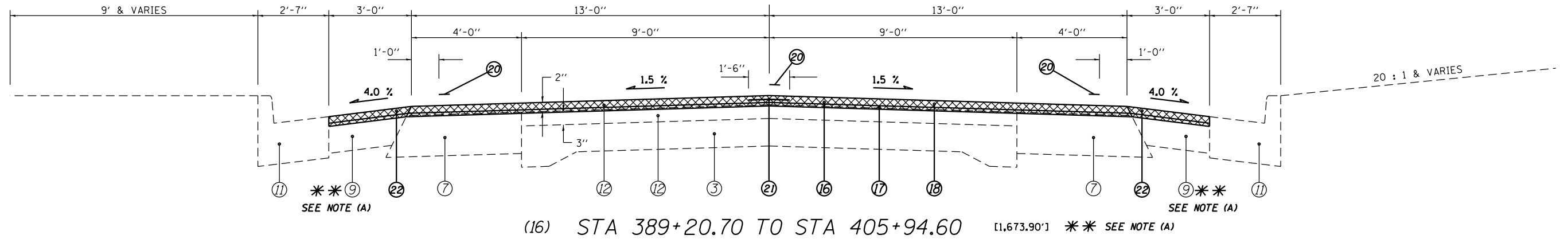
SCALE: NTS SHEET 5 OF 6 SHEETS STA. 370+50.00 TO STA. 465+75.00

F.A.P. RTE.	SECTION	COUNTY	TOTAL SHEETS	SHEET NO.
506	*	ADAMS	59	24
CONTRACT NO. 72C29				
ILLINOIS FED. AID PROJECT				

(126)RS-3,BRR,BDR,BJR,SCR

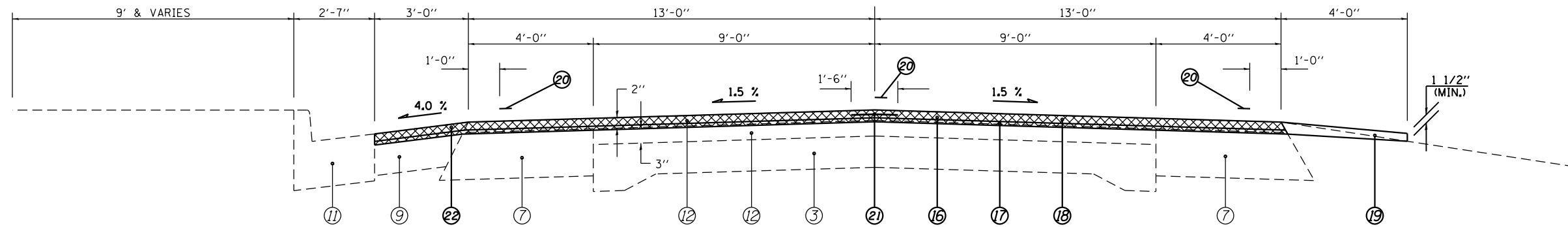
MODEL: Default
 FILE: \\mspc-pwulb08\BDR\NTEC\Illinois\pwr\pwr\DOT\Documents\10DOT_Offices\10DOT_CADDData\CADDData\CAD\Sheet\0672C29\pwr\typical.dgn

☒ F.A.P. 506 (IL 96)



(16) STA 389+20.70 TO STA 405+94.60 [1,673.90'] ** SEE NOTE (A)

☒ F.A.P. 506 (IL 96)



(17) STA 405+94.60 TO STA 411+75.60 [581.00']

** NOTE:

(A) WIDTH OF EXIST. BIT SHLD VAR. FR. 0' TO 3'-0" FR. STA. 389+20.70 TO 389+82.20 LT & FR. STA. 389+92.80 TO 390+45.80 RT.

LEGEND

- | | |
|--|--|
| ① EXIST. BITUMINOUS BASE COURSE, 8" | ⑬ PROP. HOT-MIX ASPHALT BASE COURSE WIDENING, 10" |
| ② EXIST. BITUMINOUS CONCRETE PAVEMENT, TYPE 2 13" | ⑭ PROP. HOT-MIX ASPHALT SHOULDERS, 6 1/2" (SQ YD) |
| ③ EXIST. PCC PAVEMENT 9"-6"-9" | ⑮ PROP. HOT-MIX ASPHALT SURFACE REMOVAL, 1 1/2" |
| ④ EXIST. SUB-BASE GRANULAR MATERIAL, 4" | ⑯ PROP. HOT-MIX ASPHALT SURFACE REMOVAL, 2 1/4" |
| ⑤ EXIST. SUB-BASE GRANULAR, TYPE A 12" | ⑰ PROP. LEVELING BINDER (MACHINE METHOD, N50 3/4") |
| ⑥ EXIST. ROCKFILL | ⑱ PROP. HOT-MIX ASPHALT SURFACE COURSE, MIX C, N50 1 1/2" |
| ⑦ EXIST. BITUMINOUS CONCRETE BINDER COURSE, 13 1/2" & VAR. | ⑲ PROP. AGGREGATE WEDGE SHOULDER, TYPE B |
| ⑧ EXIST. PIPE UNDERDRAINS FABRIC LINED TRENCH 4" | ⑳ PROP. PAINT PAVEMENT MARKING - LINE 5" |
| ⑨ EXIST. BITUMINOUS SHOULDERS, 8" | ㉑ PROP. LONGITUDINAL JOINT SEALANT (INSTALLED BETWEEN LEV BIND & SURF) |
| ⑩ EXIST. CONCRETE GUTTER, TYPE A | ㉒ PROP. HMA SHOULDERS (TONS) |
| ⑪ EXIST. COMB. CONCRETE CURB AND GUTTER, TYPE B-6.24 | |
| ⑫ EXIST. BITUMINOUS OVERLAY | |

△ REV. 10-22-2018

MODEL: Default
 FILE: \\nas01.psu.edu\B&E\BID\NTEC\Illinois\gov\PIWDOT\Documents\10DOT_Offices\Director\Projects\0672C29\CADDData\CAD\Sheet\0672C29\p17c29typical.dgn

USER NAME = cabrerars	DESIGNED - RSC	REVISED -
	DRAWN - RSC	REVISED -
PLOT SCALE = 100,0000' / in.	CHECKED -	REVISED -
PLOT DATE = 10/3/2018	DATE -	REVISED -

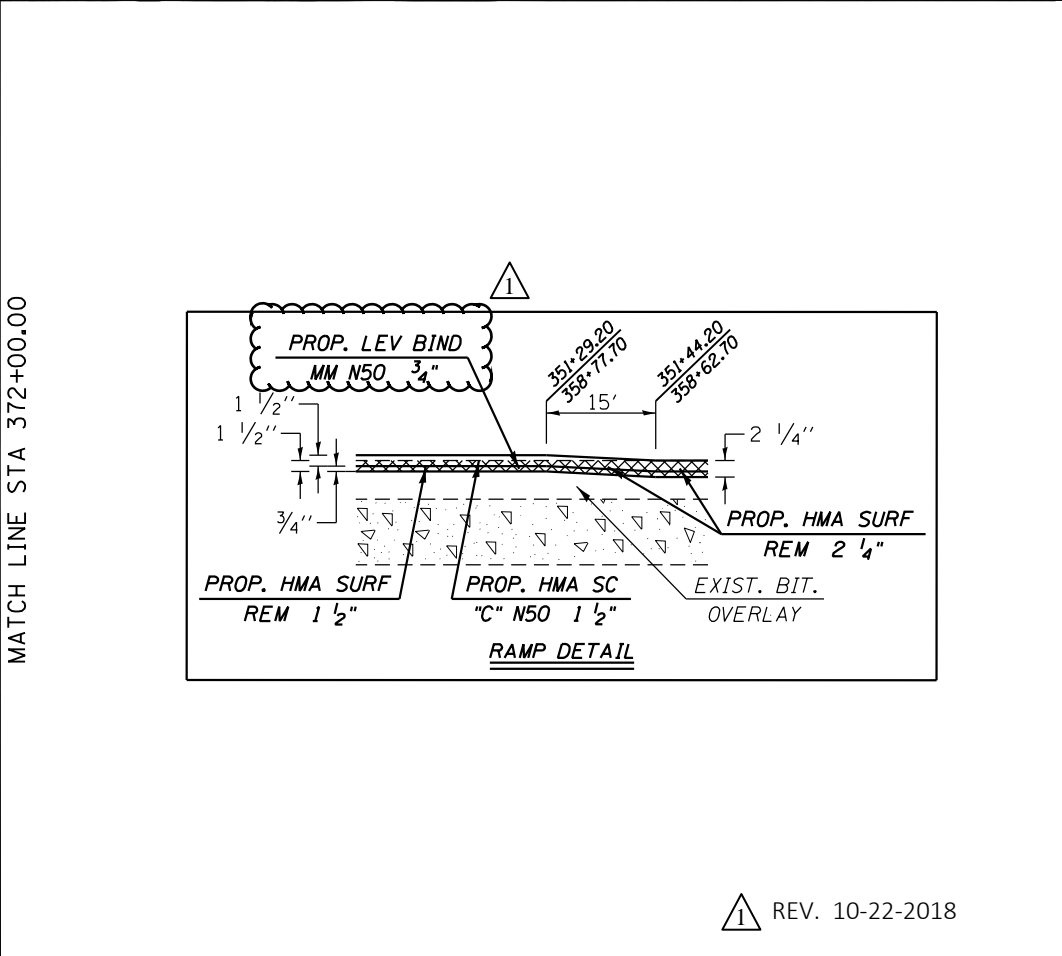
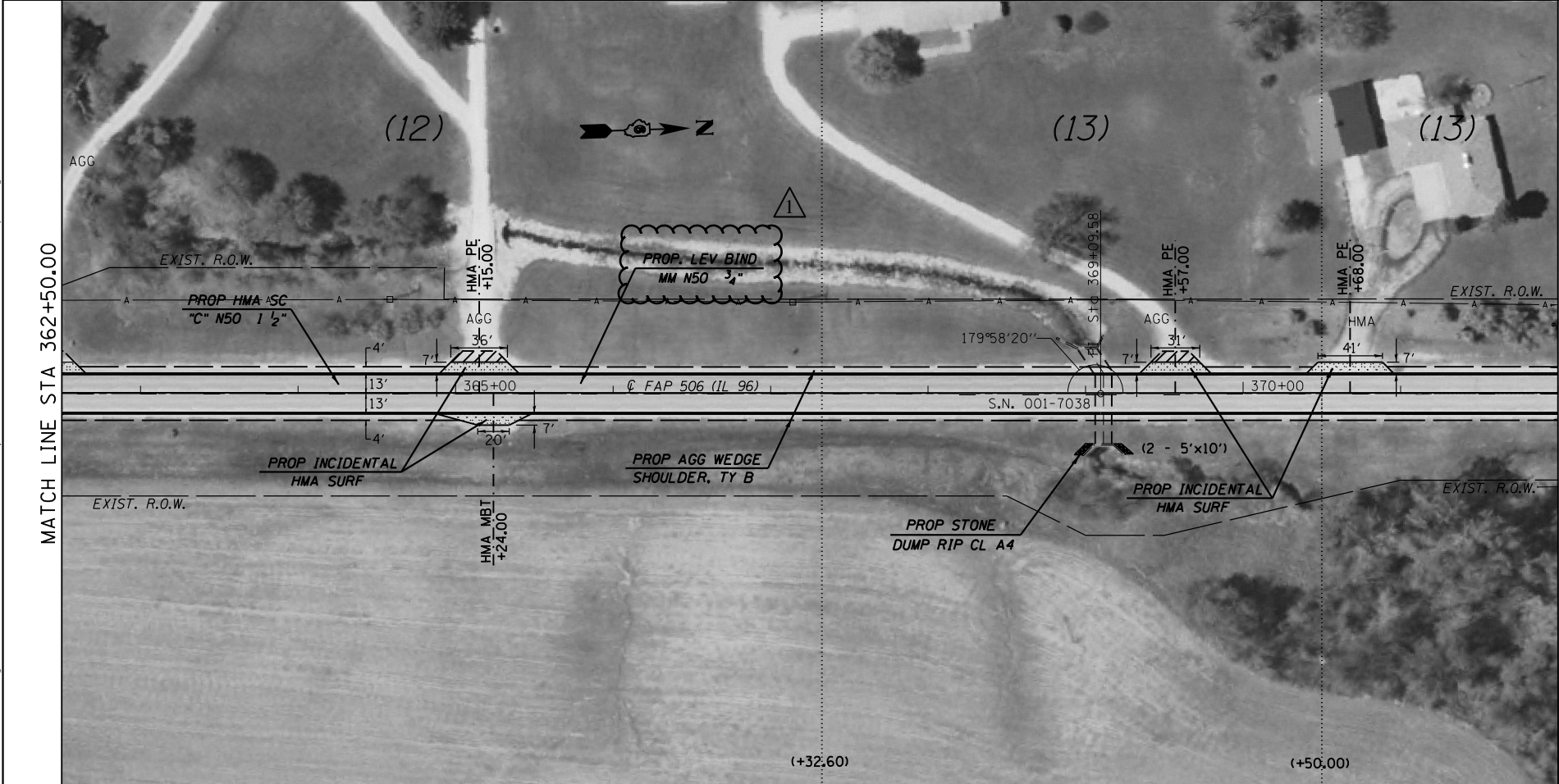
STATE OF ILLINOIS
DEPARTMENT OF TRANSPORTATION

TYPICAL SECTIONS

SCALE: NTS SHEET 6 OF 6 SHEETS STA. 389+20.70 TO STA. 411+75.60

F.A.P. RTE.	SECTION	COUNTY	TOTAL SHEETS	SHEET NO.
506	*	ADAMS	59	25
CONTRACT NO. 72C29				
ILLINOIS FED. AID PROJECT				

(126)RS-3,BRR,BDR,BJR,SCR



△ REV. 10-22-2018

MODEL: Default
 FILE: \\nas01\proj\1108\B&E\BIDD\ITC\Illinois\gov\p\WIDOT\Documents\BIDD\Office\BIDD\T\Office\BIDD\T\CAD\BIDD\BIDD\72C29\p\plan50.dgn

USER NAME = cabrerars	DESIGNED - RSC	REVISED -
	DRAWN - RSC	REVISED -
PLOT SCALE = 100,0000' / in.	CHECKED -	REVISED -
PLOT DATE = 10/3/2018	DATE -	REVISED -

**STATE OF ILLINOIS
DEPARTMENT OF TRANSPORTATION**

PLAN SHEETS

SCALE: 50 SHEET 6 OF 12 SHEETS STA. 347+50.00 TO STA. 372+00.00

F.A.P. RTE.	SECTION	COUNTY	TOTAL SHEETS	SHEET NO.
506	*	ADAMS	59	32
CONTRACT NO. 72C29				
ILLINOIS FED. AID PROJECT				

(126)RS-3,BRR,BDR,BJR,SCR

(LIMA)

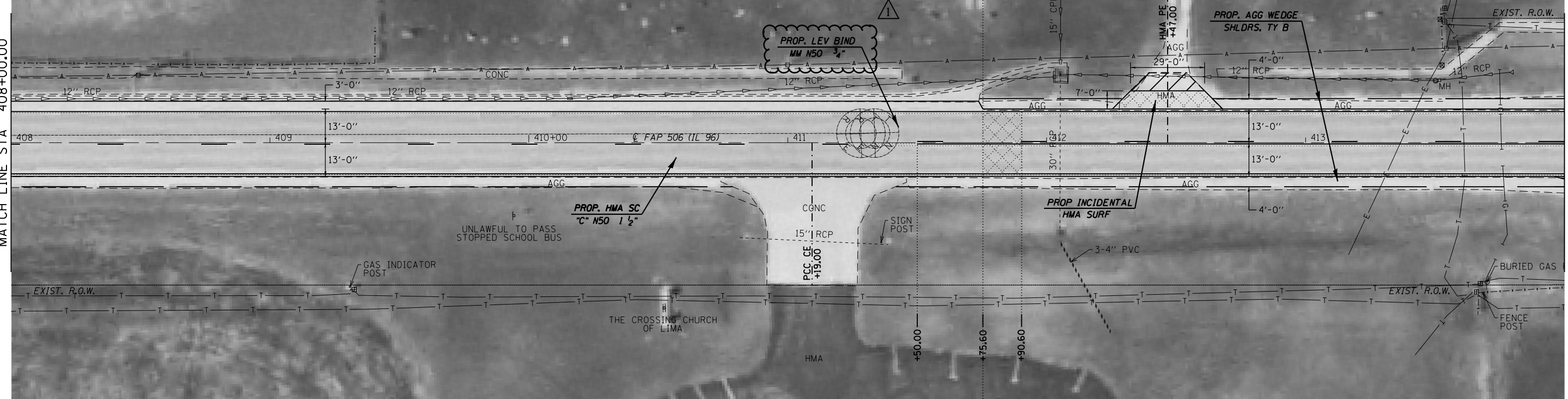
(+75.60)

(17)

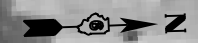
(18)

MATCH LINE STA 408+00.00

MATCH LINE STA 414+00.00

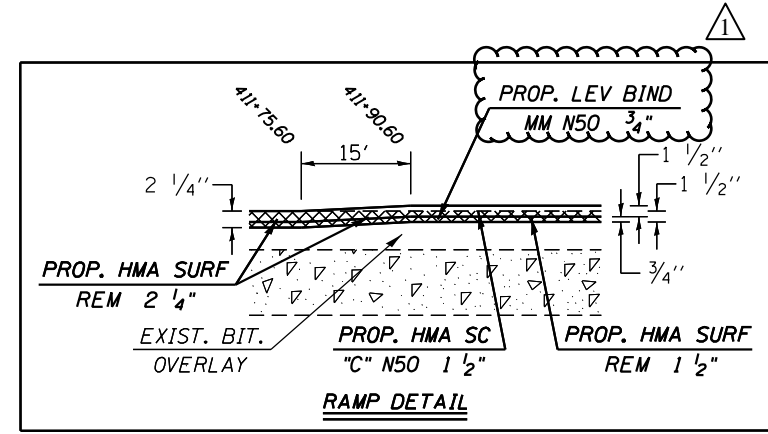
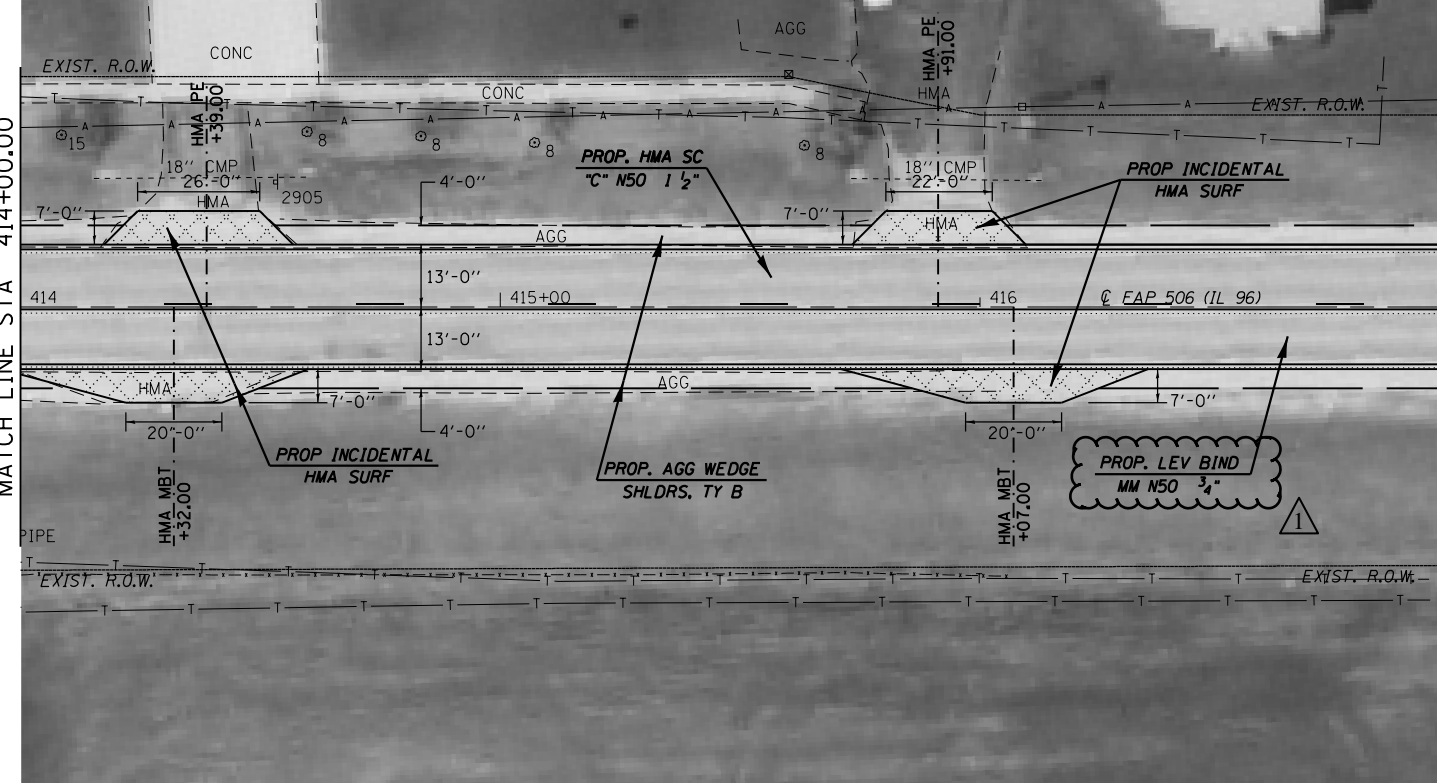


(18)



MATCH LINE STA 414+00.00

MATCH LINE STA 417+00.00



REV. 10-22-2018

MODEL: Default
FILE: \\nas01\proj\72C29\CADD\Drawings\72C29\Drawings\72C29-3-BRR,BDR,BJR,SCR.dwg

USER NAME = cabrerars	DESIGNED - RSC	REVISED -
DRAWN - RSC	REVISED -	
PLOT SCALE = 40.0000' / in.	CHECKED -	REVISED -
PLOT DATE = 10/3/2018	DATE -	REVISED -

STATE OF ILLINOIS
DEPARTMENT OF TRANSPORTATION

PLAN SHEETS

SCALE: 20 SHEET 10 OF 12 SHEETS STA. 408+00.00 TO STA. 417+00.00

F.A.P. RTE.	SECTION	COUNTY	TOTAL SHEETS	SHEET NO.
506	*	ADAMS	59	36
CONTRACT NO. 72C29				
ILLINOIS FED. AID PROJECT				

(126)RS-3,BRR,BDR,BJR,SCR

(18)

EXIST. CURVE 201
 PI STA. = 430+51.69
 $\Delta = 0^\circ 47' 37''$ (LT)
 $D = 0^\circ 04' 46''$
 $R = 72,184.86'$
 $T = 500.00'$
 $L = 999.98'$
 $E = 1.73'$
 $e = \text{---}$
 $T.R. = \text{---}$
 $S.E. RUN = \text{---}$
 $P.C. STA. = 425+51.69$
 $P.T. STA. = 435+51.67$

MATCH LINE STA 417+00.00

MATCH LINE STA 432+00.00

MATCH LINE STA 432+00.00

MATCH LINE STA 447+00.00

(18)

REV. 10-22-2018

MODEL: Default
FILE NAME: p:\ul\B&E\BID\ITEC\Illinois\pov\RW\DOT\Documents\1\DOT Office\1\dir\et 6\Projects\0672C29\CADD\data\CAD\sheet\0672C29-11-plan50.dgn

USER NAME = cabrerars	DESIGNED - RSC	REVISED -
	DRAWN - RSC	REVISED -
PLOT SCALE = 100,0000' / in.	CHECKED -	REVISED -
PLOT DATE = 10/3/2018	DATE -	REVISED -

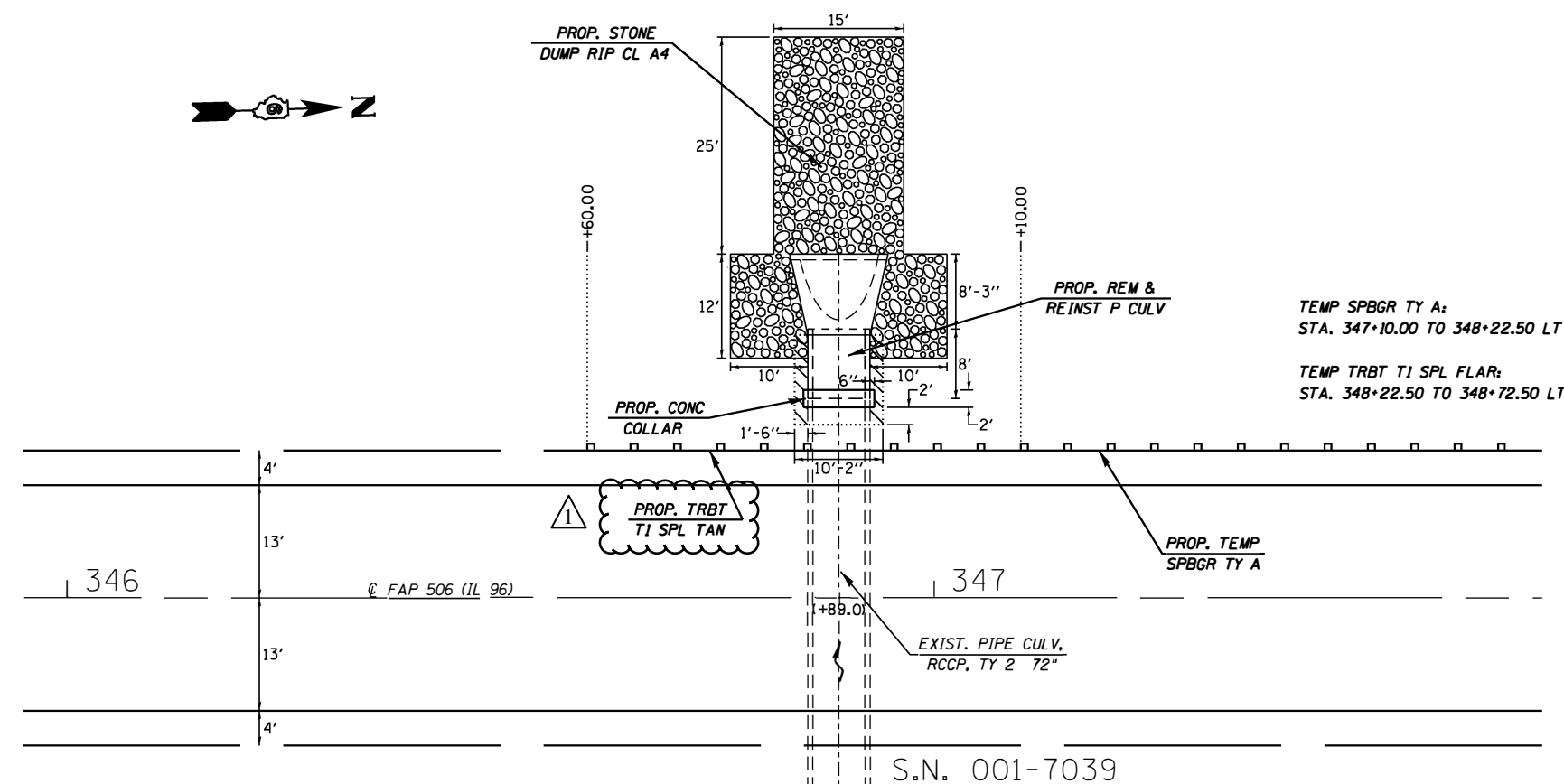
**STATE OF ILLINOIS
DEPARTMENT OF TRANSPORTATION**

PLAN SHEETS

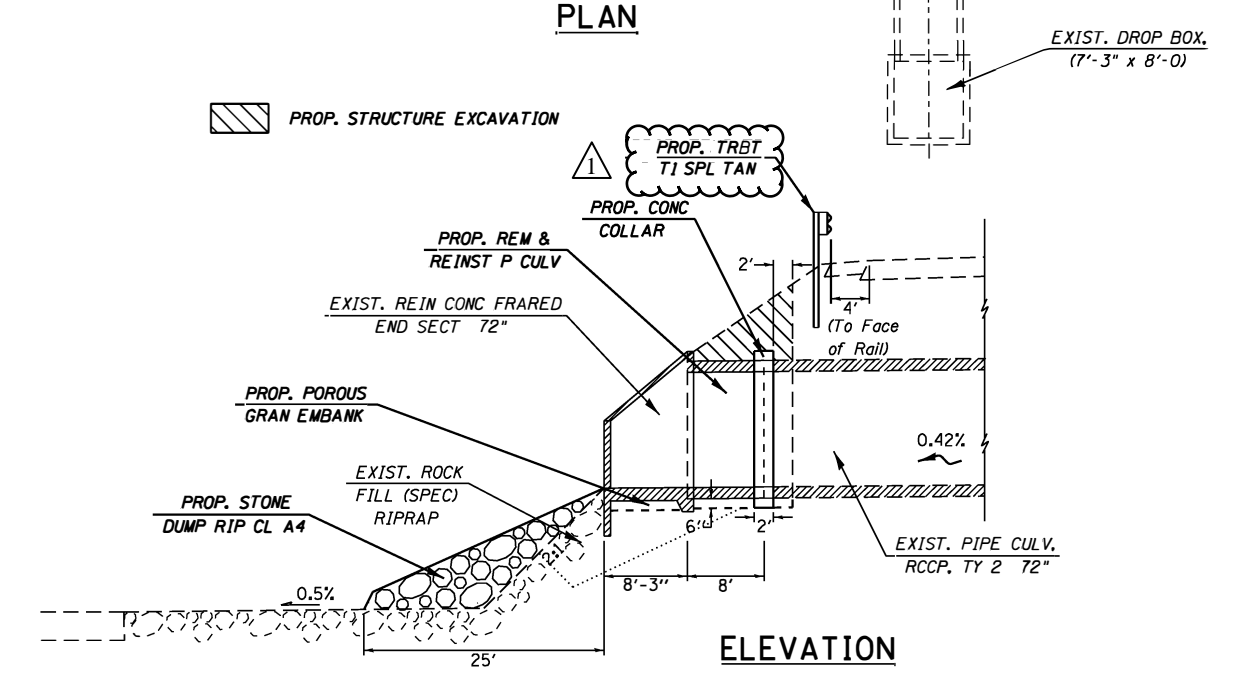
SCALE: 50 SHEET 11 OF 12 SHEETS STA. 417+00.00 TO STA. 447+00.00

F.A.P. RTE.	SECTION	COUNTY	TOTAL SHEETS	SHEET NO.
506	*	ADAMS	59	37
CONTRACT NO. 72C29				
ILLINOIS FED. AID PROJECT				

(126)RS-3,BRR,BDR,BJR,SCR



PLAN



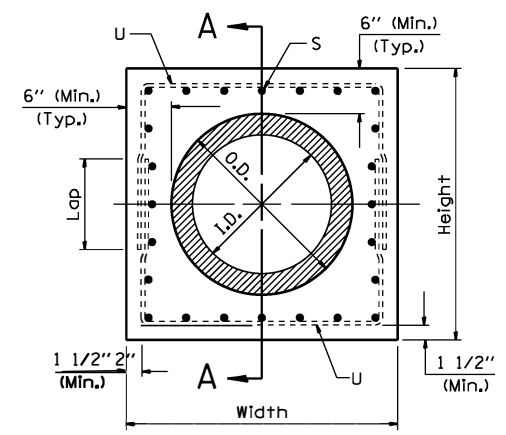
ELEVATION

GENERAL NOTES

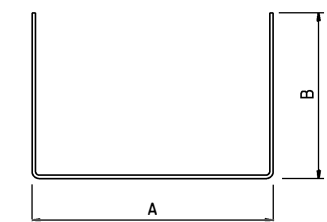
Plan dimensions and details relative to existing plans are subject to nominal construction variations. The Contractor shall field verify existing dimensions and details affecting new construction and make necessary adjustments prior to construction or ordering of materials. Such variations shall not be cause for additional compensation for change in scope of work; however, the Contractor will be paid for the quantity actually furnished at the unit price bid for the work.

Existing reinforced concrete flared end sections and pipe culverts shall be removed so that all sections considered suitable for future use by the Engineer shall be salvaged. Any material having salvage value which has been damaged by the Contractor shall be replaced by the Contractor at his/her expense with new sections of same type and size.

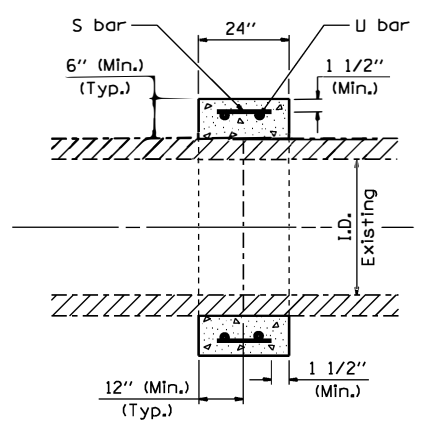
Mastic Joint Sealer for pipe connections shall meet the requirements of Section 1005 of the Standard Specifications.



PIPE CULVERT COLLAR



#5 U - bar



SECTION A-A

(Pipe end to pipe end, No expansion bolts required)

Station	Skew	Existing Culvert Size	Proposed Culvert		Collar		Reinforcement Bars						Class SI Concrete Collar yd ³				
			I.D.	O.D.	Height	Width	S bar			U bar							
							No.	Size	Length	No.	Size	A	B	Lap	Length	lb	
346+89.00	NONE	72"	72"	86"	98"	98"	24	#5	1'-9"	4	#5	7'-11"	5'-3"	2'-6"	18'-7"	121.3	2.0

TOTAL BILL OF MATERIAL		
ITEM	UNIT	TOTAL
Structure Excavation	CU YD	21
Remove and Reinstall Pipe Culvert	FOOT	17
Concrete Collar	CU YD	2
Reinforcement Bars	POUND	122
Porous Granular Embankment	TON	8
Stone Dumped Riprap, Class A4	SQ YD	69
Temporary Steel Plate Beam Guardrail, Type A	FOOT	112.5
Temporary Traffic Barrier Terminal, Type I	EACH	1
Temporary Traffic Barrier Terminal, Type I, Special (Flared)	EACH	1

REV. 10-22-2018

Special (Tangent)

MODEL: Defaul; FILE NAME: \\ILL084\BEN\NTEG\Illinois.gov\PIV\DOT\Documents\10101\Office\BIDirect\B\Projects\0672C29\CADD\data\CAD\sheet\0672C29-shr-culvert-repair.dgn

U ERSNAME = c.d.r. rars	DESIGNED - RSC	REVISED -
PLOT SCALE = 40.0000' / in.	D RAWN - RSC	REVISED -
PLOT DATE = 10/18/2018	CHECKED -	REVISED -
	DATE -	REVISED -

**STATE OF ILLINOIS
DEPARTMENT OF TRANSPORTATION**

**PIPE CULVERT REPAIR DETAILS
SN: 001-7039**

SCALE: NTS SHEET 1 OF 1 SHEETS STA. 345+95.00 TO STA. 348+25.00

F.A.P. RTE.	SECTION	COUNTY	TOTAL SHEETS	SHEET NO.
506	*	ADAMS	59	51
CONTRACT NO. 72C29				

(126)RS-3.BRR,BOR,BJR,SCR