

PIPE NO.	FROM	TO	LENGTH (FT)	DIA (IN)	PIPE TYPE	SLOPE (%)	D.I.	U.I.
P100	S101	S100	66	48	STORM SEWERS, CLASS A, TYPE 1 EQUIVALENT ROUND-SIZE	0.11%	530.50	530.57
P101	S102	S101	148	48	STORM SEWERS, CLASS A, TYPE 2 EQUIVALENT ROUND-SIZE	0.10%	530.57	530.72
P102	S103	S102	364	48	STORM SEWERS, CLASS A, TYPE 1 EQUIVALENT ROUND-SIZE	0.10%	530.72	531.09
P103	S104	S103	140	48	STORM SEWERS, CLASS A, TYPE 1 EQUIVALENT ROUND-SIZE	0.10%	531.09	531.23
P104	S105	S104	382	48	STORM SEWERS, CLASS A, TYPE 1 EQUIVALENT ROUND-SIZE	0.10%	531.23	531.61
P105	S107	S106	45	12	STORM SEWERS, RUBBER GASKET, CLASS A, TYPE 2	2.89%	533.74	535.03
P106	S109	S106	138	48	STORM SEWERS, CLASS A, TYPE 1 EQUIVALENT ROUND-SIZE	0.10%	531.61	531.75
P107	S110	S109	8	12	STORM SEWERS, RUBBER GASKET, CLASS A, TYPE 1	1.75%	533.88	534.02
P108	S111	S110	10	12	STORM SEWERS, RUBBER GASKET, CLASS A, TYPE 1	6.30%	534.02	534.65
P109	S112	S110	29	12	STORM SEWERS, RUBBER GASKET, CLASS A, TYPE 1	3.34%	534.02	534.99
P110	S114	S109	180	48	STORM SEWERS, CLASS A, TYPE 1 EQUIVALENT ROUND-SIZE	0.11%	531.75	531.94
P111	S116	S114	8	21	STORM SEWERS, RUBBER GASKET, CLASS A, TYPE 2	1.06%	531.94	532.03
P112	S117	S116	29	21	STORM SEWERS, RUBBER GASKET, CLASS A, TYPE 1	0.59%	532.03	532.20
P113	S118	S117	27	21	STORM SEWERS, RUBBER GASKET, CLASS A, TYPE 1	0.62%	532.20	532.36
P114	S119	S118	26	18	STORM SEWERS, TYPE 1, WATER MAIN QUALITY PIPE	11.30%	533.24	536.15
P115	S120	S118	40	21	STORM SEWERS, RUBBER GASKET, CLASS A, TYPE 1	0.60%	532.36	532.60
P116	S121	S120	26	21	STORM SEWERS, TYPE 1, WATER MAIN QUALITY PIPE	8.08%	532.60	534.68
P117	S122	S114	23	42	STORM SEWERS, CLASS A, TYPE 1 EQUIVALENT ROUND-SIZE	0.13%	531.94	531.97
P118	S123	S122	23	12	STORM SEWERS, RUBBER GASKET, CLASS A, TYPE 1	16.34%	532.79	536.42
P119	S124	S122	51	42	STORM SEWERS, CLASS A, TYPE 1 EQUIVALENT ROUND-SIZE	0.12%	531.97	532.02
P120	S126	S124	22	12	STORM SEWERS, RUBBER GASKET, CLASS A, TYPE 1	4.14%	532.93	533.85
P121	S128	S124	137	42	STORM SEWERS, CLASS A, TYPE 1 EQUIVALENT ROUND-SIZE	0.14%	532.02	532.21
P122	S129	S128	8	12	STORM SEWERS, RUBBER GASKET, CLASS A, TYPE 2	1.65%	532.23	532.37
P123	S130	S129	10	12	STORM SEWERS, RUBBER GASKET, CLASS A, TYPE 1	1.00%	532.37	532.47
P124	S131	S129	29	12	STORM SEWERS, RUBBER GASKET, CLASS A, TYPE 1	0.96%	532.37	532.65
P125	S132	S131	10	12	STORM SEWERS, RUBBER GASKET, CLASS A, TYPE 1	1.00%	532.65	532.75
P126	S133	S128	37	42	STORM SEWERS, CLASS A, TYPE 1 EQUIVALENT ROUND-SIZE	0.16%	532.21	532.27
P127	S134	S133	15	15	*STORM SEWERS, RUBBER GASKET, CLASS A, TYPE 1	12.00%	532.70	534.50
P128	S135	S133	43	15	STORM SEWERS, RUBBER GASKET, CLASS A, TYPE 1	0.66%	532.27	532.55
P129	S136	S133	101	30	STORM SEWERS, CLASS A, TYPE 1 EQUIVALENT ROUND-SIZE	0.30%	532.27	532.57
P130	S137	S136	9	12	STORM SEWERS, RUBBER GASKET, CLASS A, TYPE 1	1.64%	533.02	533.16
P131	S138	S137	29	12	STORM SEWERS, RUBBER GASKET, CLASS A, TYPE 1	0.97%	533.16	533.44
P132	S139	S136	61	30	STORM SEWERS, CLASS A, TYPE 1 EQUIVALENT ROUND-SIZE	0.30%	532.57	532.75
P133	S140	S139	22	12	STORM SEWERS, RUBBER GASKET, CLASS A, TYPE 1	8.34%	534.70	536.54
P134	S141	S139	50	30	STORM SEWERS, CLASS A, TYPE 1 EQUIVALENT ROUND-SIZE	0.30%	532.75	532.90
P135	S142	S141	22	12	STORM SEWERS, RUBBER GASKET, CLASS A, TYPE 1	9.74%	534.41	536.57
P136	S143	S141	180	30	STORM SEWERS, CLASS A, TYPE 2 EQUIVALENT ROUND-SIZE	0.31%	532.90	533.45
P137	S144	S143	8	15	STORM SEWERS, RUBBER GASKET, CLASS A, TYPE 2	1.66%	533.90	534.04
P138	S145	S144	10	12	STORM SEWERS, RUBBER GASKET, CLASS A, TYPE 1	0.97%	534.04	534.14
P139	S146	S144	29	12	STORM SEWERS, RUBBER GASKET, CLASS A, TYPE 1	0.97%	534.04	534.32
P140	S147	S146	10	12	STORM SEWERS, RUBBER GASKET, CLASS A, TYPE 1	1.01%	534.32	534.42
P141	S148	S143	84	30	STORM SEWERS, CLASS A, TYPE 1 EQUIVALENT ROUND-SIZE	0.30%	533.45	533.70
P142	S149	S148	23	12	STORM SEWERS, RUBBER GASKET, CLASS A, TYPE 1	6.29%	535.48	536.90
P143	S150	S148	48	24	STORM SEWERS, RUBBER GASKET, CLASS A, TYPE 2	0.31%	533.70	533.85
P144	S151	S150	22	12	STORM SEWERS, RUBBER GASKET, CLASS A, TYPE 1	13.34%	534.53	537.50
P145	S152	S150	76	24	STORM SEWERS, RUBBER GASKET, CLASS A, TYPE 1	0.30%	533.85	534.08
P146	S153	S152	8	15	STORM SEWERS, RUBBER GASKET, CLASS A, TYPE 2	1.65%	534.12	534.26
P147	S154	S153	29	15	STORM SEWERS, RUBBER GASKET, CLASS A, TYPE 1	0.76%	534.26	534.48
P148	S155	S154	22	15	STORM SEWERS, RUBBER GASKET, CLASS A, TYPE 1	0.98%	534.48	534.70
P149	S156	S155	33	12	STORM SEWERS, TYPE 1, WATER MAIN QUALITY PIPE	8.54%	535.00	537.86
P150	S157	S155	48	12	STORM SEWERS, RUBBER GASKET, CLASS A, TYPE 1	0.81%	534.70	535.09
P151	S158	S157	40	12	STORM SEWERS, TYPE 1, WATER MAIN QUALITY PIPE	6.00%	535.09	537.47
P152	S159	S152	145	18	STORM SEWERS, RUBBER GASKET, CLASS A, TYPE 2	0.55%	534.08	534.88
P153	S160	S159	8	12	STORM SEWERS, RUBBER GASKET, CLASS A, TYPE 2	1.65%	535.17	535.31
P154	S161	S160	29	12	STORM SEWERS, RUBBER GASKET, CLASS A, TYPE 1	0.97%	535.31	535.59
P155	S162	S159	123	15	STORM SEWERS, RUBBER GASKET, CLASS A, TYPE 2	0.55%	534.88	535.56
P156	S163	S162	8	12	STORM SEWERS, RUBBER GASKET, CLASS A, TYPE 2	1.53%	535.56	535.69
P157	S164	S163	29	12	STORM SEWERS, RUBBER GASKET, CLASS A, TYPE 1	1.93%	535.69	536.25
P158	S100	S164	9	24	STORM SEWERS, RUBBER GASKET, CLASS A, TYPE 1	0.77%	530.50	530.57

*15" CHECK VALVE INSTALLED ON DOWNSTREAM END

LEGEND

BOUNDARY LINES/SYMBOLS	EXISTING	PROPOSED
DITCH & SWALE BOTTOM	----	----
SUMMIT	↔	↔
DIRECTION OF SWALE FLOW	→	→
PIPE CULVERT	----	----
PIPE UNDERDRAINS, TYPE 1, 6"	—○—	—○—
STORM SEWER	—○—	—○—
CATCH BASIN	○	●
INLET	—	—
MANHOLE OR PRECAST TEE W/RISER	○	○
RCP TEE		↑
RCP REDUCER		⊞
PIPE CULVERT END SECTION	◁	◁
STRUCTURES		XXX
PIPES		XXX
CLEANING DRY WELLS		C/DW
MJ CAP		⌈

FILE NAME = S:\JUL_16_08\16-000-0495\6457108\Drawings\CD\DWG\16-000_Sheets\6457108-sh-drain-schedule.dwg

STRAND ASSOCIATES
 1170 SOUTH HOBLOTT ROAD
 JOLIET, ILLINOIS 60431
 (815) 744-4200

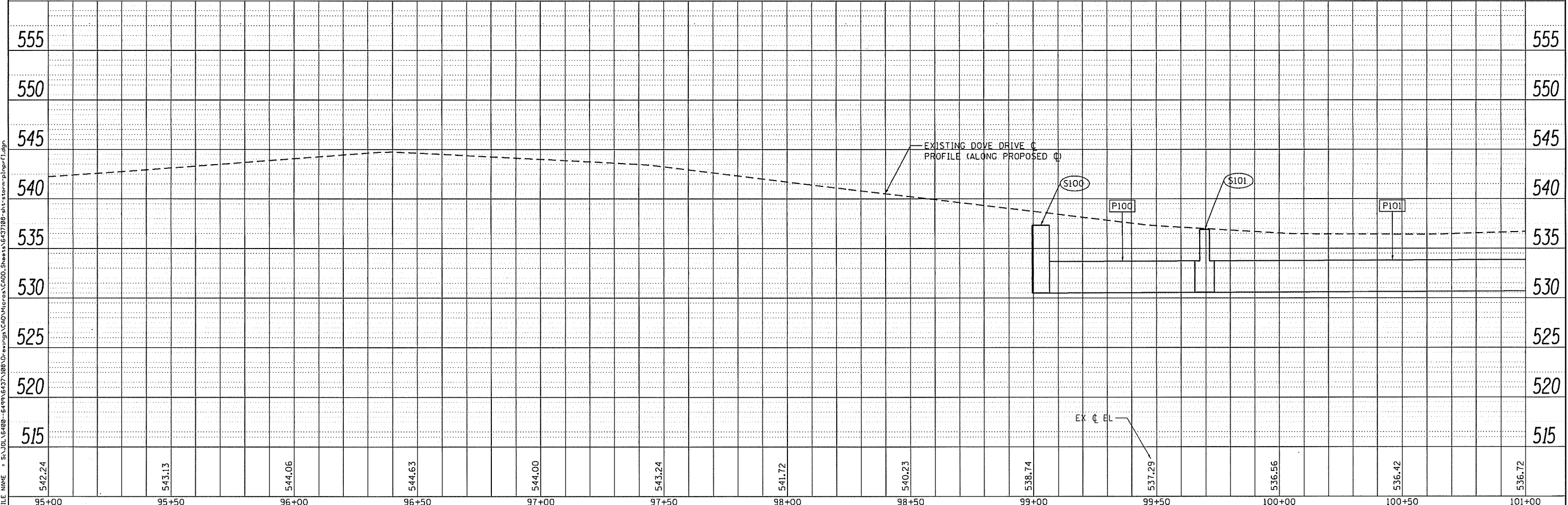
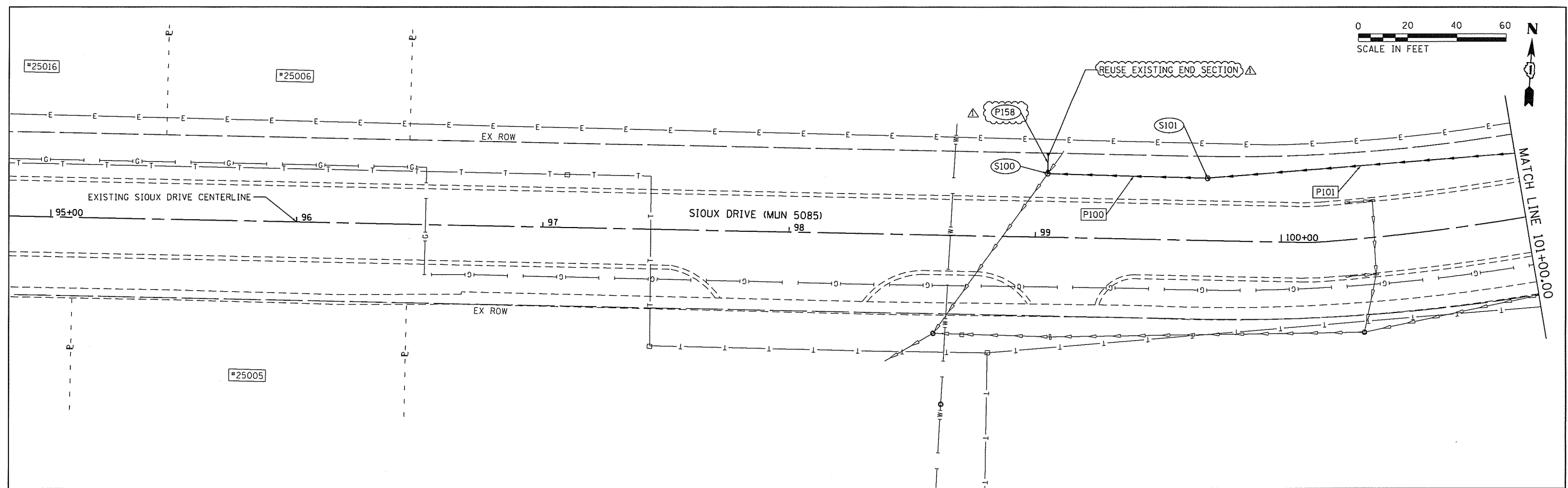
USER NAME = JakeSc	DESIGNED -	REVISED - 10/31/2018
MODEL NAME = Default	DRAWN -	REVISED -
PLOT SCALE = 2.0000' / in.	CHECKED -	REVISED -
PLOT DATE = 10/31/2018	DATE -	REVISED -

**STATE OF ILLINOIS
 DEPARTMENT OF TRANSPORTATION**

DRAINAGE SCHEDULES

SCALE: SHEET 1 OF 3 SHEETS STA. TO STA.

MUN	SECTION	COUNTY	TOTAL SHEETS	SHEET NO.
5080	16-00025-00-FP	WILL	74	27
CONTRACT NO. 61F19				
[ILLINOIS] FED. AID PROJECT				



PLAN

BY	DATE
STRANDED	
PLOTTED	
NOTE BOOK	
NO.	
CADD FILE NAME	

PROFILE

BY	DATE
STRANDED	
PLOTTED	
NOTE BOOK	
NO.	
CADD FILE NAME	

FILE NAME = S:\JL\6408--6499\6437\08\Drawings\CADD\Profile\Profile.dgn

1170 SOUTH HOUBOLT ROAD JOLIET, ILLINOIS 60431 (815) 744-4200	USER NAME = JakeSe	DESIGNED -	REVISED - Δ 10/31/2018	STATE OF ILLINOIS DEPARTMENT OF TRANSPORTATION	DRAINAGE AND UTILITY PLAN AND PROFILE SIoux DRIVE			MUN	SECTION	COUNTY	TOTAL SHEETS	SHEET NO.
	MODEL NAME = Default	DRAWN -	REVISED -		0023	16-00025-00-FP	WILL	74	30			
	PLOT SCALE = 40.0000' / in.	CHECKED -	REVISED -		CONTRACT NO. 61F19							
	PLOT DATE = 10/31/2018	DATE = 10/31/2018	REVISED -		ILLINOIS FED. AID PROJECT							

SCALE: 20'-H 5'-V SHEET 1 OF 7 SHEETS STA. 95+00.00 TO STA. 101+00.00