

099

F.A. RTE.	SECTION	COUNTY	TOTAL SHEET NO.
	ROCK CUT 2018	WINNEBAGO	406 + 1
	ILLINOIS		CONTRACT NO. 46903

*406 + 1 = 407 TOTAL SHEETS

STATE OF ILLINOIS
DEPARTMENT OF TRANSPORTATION
DIVISION OF HIGHWAYS

I.D.O.T./I.D.N.R. STATEWIDE
ROCK CUT STATE PARK
SECTION: ROCK CUT 2018

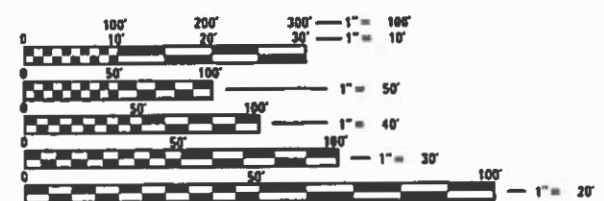
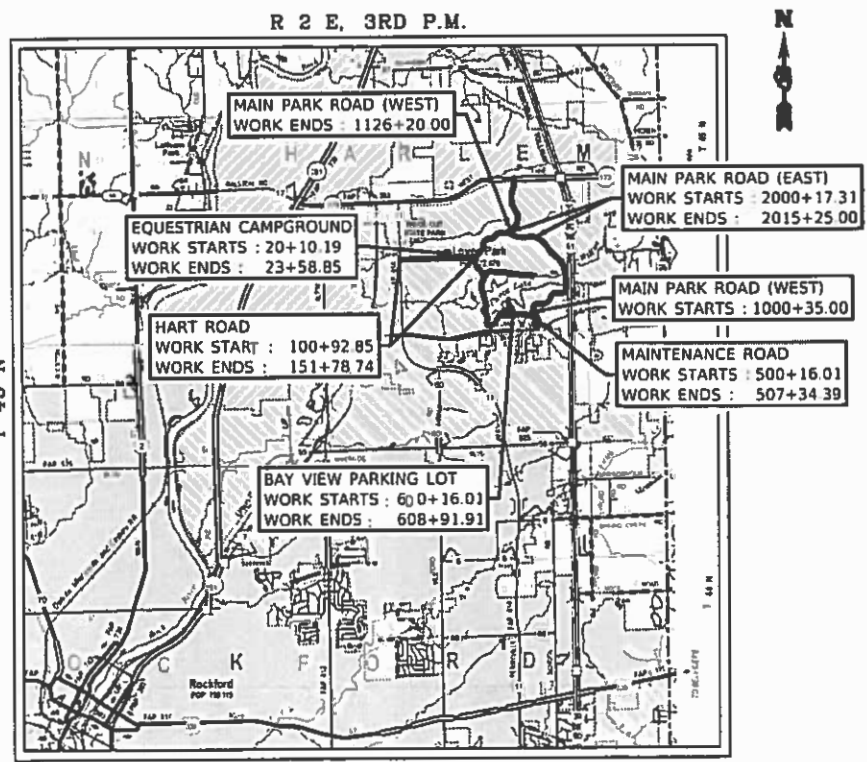
PARK IMPROVEMENTS
SECTION: ROCK CUT 2018
WINNEBAGO COUNTY
I.D.O.T. PROJECT No. P-30-001-14
I.D.N.R. FILE No. 1-016-001
C-30-018-18

INDEX OF SHEETS
(SEE SHEET 2)

STATE STANDARDS
(SEE SHEET 2)



MAIN PARK ROAD (NEW WORK)
STA 1044+05.60 = 700+00.00
STA 1051+17.40 = 707+34.28



FULL SIZE PLANS HAVE BEEN PREPARED USING STANDARD ENGINEERING SCALES. REDUCED SIZED PLANS WILL NOT CONFORM TO STANDARD SCALES. IN MAKING MEASUREMENTS ON REDUCED PLANS, THE ABOVE SCALES MAY BE USED.

J.U.L.I.E.
JOINT UTILITY LOCATION INFORMATION FOR EXCAVATION
1-800-892-0123
OR 811

PROJECT ENGINEER :
CONSULTANT ENGINEER :
CONTRACT NO. 46903

vasconcelles
engineers & corporation
247 west white oaks drive
spring field, il 62704
phone (217)698-3114

GROSS LENGTH = 21,096.25 FT. = 3.995 MILE
NET LENGTH = 21,144.36 FT. = 4.005 MILE

ROBERT H. DALY
062-03025
REGISTERED
PROFESSIONAL
ENGINEER
OF
ILLINOIS
EXPIRES: 11/30/19
SIGNED: 09/07/18

STATE OF ILLINOIS
DEPARTMENT OF TRANSPORTATION

SUBMITTED 8-17-2018

REGIONAL ENGINEER

OCT 5 2018

ENGINEER OF DESIGN AND ENVIRONMENT

OCT 9 2018

DIRECTOR OF HIGHWAYS PROJECT IMPLEMENTATION

PRINTED BY THE AUTHORITY
OF THE STATE OF ILLINOIS

INDEX OF SHEETS

1	COVER SHEET
2-3	INDEX OF SHEETS, GENERAL NOTES AND LEGEND
4-16	SUMMARY OF QUANTITIES
17-42	SCHEDULE OF QUANTITIES
43-49	TYPICAL SECTIONS
50	EXISTING OVERALL SITE AND CONTROL POINTS
51	CONTROL POINT COORDINATES
52-76	MAIN PARK ROAD (EXISTING & DEMOLITION)
77-85	HART ROAD (EXISTING & DEMOLITION)
86	EQUESTRIAN CAMPGROUND (EXISTING & DEMOLITION)
87	MAINTENANCE OFFICE ROAD (EXISTING & DEMOLITION)
88-89	BAY VIEW PARKING LOT (EXISTING & DEMOLITION)
90	BOAT RAMP PARKING LOT (EXISTING & DEMOLITION)
91-130	MAIN PARK ROAD (PLAN & PROFILE)
131-144	HART ROAD (PLAN & PROFILE)
145	HART ROAD INTERSECTION GRADING PLAN
146-147	EQUESTRIAN CAMPGROUND (PLAN & PROFILE)
148-149	MAINTENANCE OFFICE ROAD (PLAN & PROFILE)
150	DAM APPROACH ROADWAY
151-153	BAY VIEW PARKING LOT (PLAN & PROFILE)
154	BOAT RAMP PARKING LOT
155	BOAT RAMP PARKING LOT GRADING PLAN
156	BOAT RAMP PARKING LOT SIDEWALK GRADING DETAILS
157	CONCESSION PARKING LOT PROPOSED PLAN
158	CONCESSION PARKING LOT GRADING PLAN
159	DAY-USE PARKING LOT (EAST) GRADING PLAN
160	DAY-USE PARKING LOT (WEST) GRADING PLAN
161-162	SPILLWAY PARKING LOT
163	NORTH SPILLWAY PARKING LOT
164-171	NEW SHARED USE PATH (PLAN & PROFILE)
172	NEW SPILLWAY SIDEWALKS
173-197	MAIN PARK ROAD (EROSION CONTROL)
198-206	HART ROAD (EROSION CONTROL)
207	EQUESTRIAN CAMPGROUND (EROSION CONTROL)
208	MAINTENANCE OFFICE ROAD (EROSION CONTROL)
209-210	BAY VIEW PARKING LOT (EROSION CONTROL)
211	BOAT RAMP (EROSION CONTROL)
212-215	NEW SHARED USE PATH (EROSION CONTROL)
216-219	TRAFFIC CONTROL
220-223a	SITE DETAILS
224	CONCESSION PARKING LOT LANDSCAPE PLAN
225	BOAT RAMP PARKING LOT - ELECTRICAL
226	MAIN PARK ROAD (CONCESSION AREA) - ELECTRICAL
227	MAIN PARK ROAD (DAY USE/WEST LAKE PICNIC AREA) - ELECTRICAL
228	MAIN PARK ROAD & SPILLWAY PARKING LOT - ELECTRICAL
229	WIRING & DETAIL
230-234	STRUCTURE PLANS - BOX CULVERT (1004 + 78.73)
235-256	STRUCTURE PLANS - BRIDGE (1059 + 59.90)
257-265	STRUCTURE PLANS - RETAINING WALL (918 + 46 - 922 + 46)
266-276	DISTRICT 2 STANDARDS
277-348	MAIN PARK ROAD (CROSS SECTIONS)
349-374	HART ROAD (CROSS SECTIONS)
375-378	EQUESTRIAN ROAD (CROSS SECTIONS)
379-382	MAINTENANCE OFFICE ROAD (CROSS SECTIONS)
383-387	BAY VIEW PARKING LOT (CROSS SECTIONS)
388-406	NEW SHARED USE PATH (CROSS SECTIONS)

LIST OF DISTRICT 2 STANDARDS

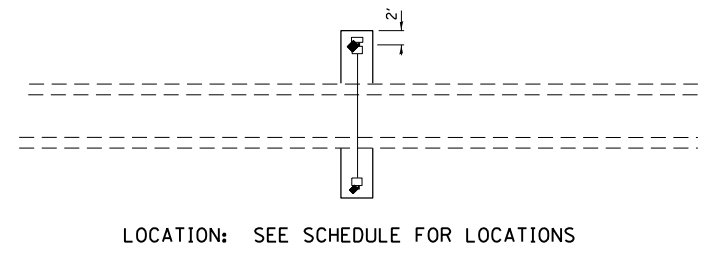
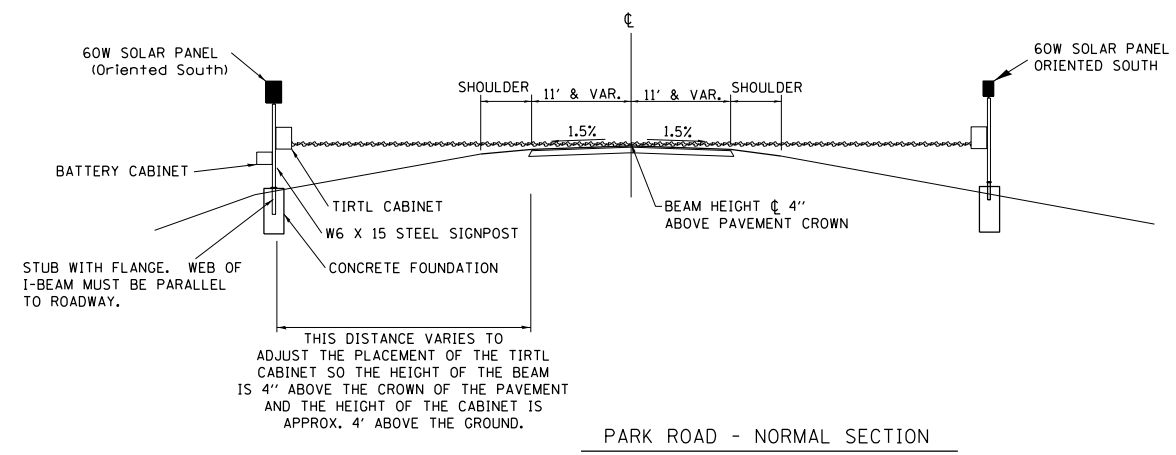
5.1	STANDARD OUTLET FOR CURB AND GUTTER
10.2	INLETS, SPECIAL
19.4A	CONCRETE REVETMENT MAT AT END SECTIONS
21.2	STANDARD INLET FOR CURB AND GUTTER
31.4	PARKING BLOCKS
34.1	WORK ZONE SIGN DETAILS
41.1	TYPICAL PAVEMENT MARKINGS
44.2	RESERVED PARKING SIGN DETAIL
50.4	TYPICAL BENCHING ON EXISTING EMBANKMENT
63.2	PIPE HANDRAILS FOR STEPS
71.4	DETAIL OF CONCRETE STEPS
92.1	DETAILS OF PLANTING AND BRACING TREES

LIST OF HIGHWAY STANDARDS

000001-06	STANDARD SYMBOLS, ABBREVIATIONS AND PATTERNS	630001-12	STEEL PLATE BEAM GUARDRAIL
001001-02	AREAS OF REINFORCEMENT BARS	630116	BACK SIDE PROTECTION OF GUARDRAIL
001006	DECIMAL OF AN INCH AND OF A FOOT	631031-15	TRAFFIC BARRIER TERMINAL, TYPE 6
202001-01	EARTH MEDIAN DITCH CHECK	666001-01	RIGHT OF WAY MARKERS
280001-07	TEMPORARY EROSION CONTROL SYSTEMS	701001-02	OFF-RD OPERATIONS, 2L, 2W, MORE THAN 15' (4.5 M) AWAY
420001-09	PAVEMENT JOINTS	701006-05	OFF-RD OPERATIONS, 2L, 2W, 15' (4.5 M) TO 24" (600MM) FROM PAVEMENT EDGE
420101-06	24' (7.2M) JOINTED PCC PAVEMENT	701011-04	OFF-RD MOVING OPERATIONS, 2L, 2W, DAY ONLY
420701-03	PAVEMENT WELDED WIRE REINFORCEMENT	701301-04	LANE CLOSURE, 2L, 2W, SHORT TIME OPERATIONS
424001-10	PERPENDICULAR CURB RAMPS FOR SIDEWALKS	701901-07	TRAFFIC CONTROL DEVICES
515001-03	NAME PLATE FOR BRIDGES	720001-01	SIGN PANEL MOUNTING DETAILS
542301-03	PRECAST REINFORCED CONCRETE FLARED END SECTION	720021-02	SIGN PANELS EXTRUDED ALUMINUM TYPE
542306-03	PRECAST REINFORCED CONCRETE ELLIPTICAL FLARED END SECTION	728001-01	TELESCOPING STEEL SIGN SUPPORT
542401-03	METAL FLARED END SECTION FOR PIPE CULVERTS	731001-01	BASE FOR TELESCOPING STEEL SIGN SUPPORT
602301-04	INLET - TYPE A	780001-05	TYPICAL PAVEMENT MARKINGS
602306-03	INLET - TYPE B	B.L.R. 14-12	PORTLAND CEMENT CONCRETE PAVEMENT (NONREINFORCED)
602401-04	PRECAST MANHOLE TYPE A 4' (1.22M) DIAMETER	B.L.R. 17-4	TRAFFIC CONTROL DEVICES - DAY LABOR CONSTRUCTION
602406-08	PRECAST MANHOLE TYPE A 6' (1.83M) DIAMETER	B.L.R. 18-6	TRAFFIC CONTROL DEVICES - DAY LABOR MAINTENANCE
602601-05	PRECAST REINFORCED CONCRETE FLAT SLAB TOP	B.L.R. 21-9	TYPICAL APPLICATION OF TRAFFIC CONTROL DEVICES FOR CONSTRUCTION ON RURAL LOCAL HIGHWAYS
602701-02	MANHOLE STEPS	B.L.R. 22-7	TYPICAL APPLICATION OF TRAFFIC CONTROL DEVICES FOR CONSTRUCTION ON RURAL LOCAL HIGHWAYS (TWO-LANE TWO WAY RURAL TRAFFIC)
604001-04	FRAME AND LIDS TYPE 1	B.L.R. 23-4	TRAFFIC BARRIER TERMINAL TYPE 1
604011-05	FRAME AND GRATE TYPE 3V	B.L.R. 24-2	MAILBOX TURNOUT FOR LOCAL ROADS
604036-03	GRATE TYPE 8		
604056-04	FRAME AND GRATE TYPE 11V		
606001-07	CONCRETE CURB TYPE B AND COMBINATION CONCRETE CURB AND GUTTER		
610001-08	SHOULDER INLET WITH CURB		

2
220-223a

FILE NAME =	USER NAME = *USER*	DESIGNED -	REVISED -	STATE OF ILLINOIS DEPARTMENT OF TRANSPORTATION	INDEX OF SHEETS, GENERAL NOTES AND LEGEND ROCK CUT STATE PARK		F.A. RTE.	SECTION	COUNTY	TOTAL SHEETS	SHEET NO.	
FILES		DRAWN - D.R.C.	REVISED -		SCALE:	SHEET 1 OF 2 SHEETS	STA.	TO STA.	ROCK CUT 2018	WINNEBAGO		
MODELNAME		CHECKED - R.H.D.	REVISED -							CONTRACT NO. 46903		
		DATE - 08/31/18	REVISED -							ILLINOIS FED. AID PROJECT		

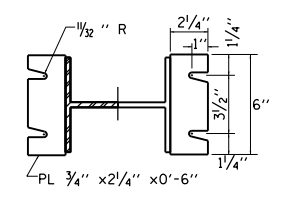
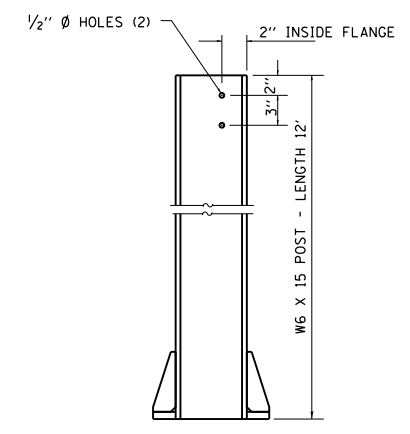
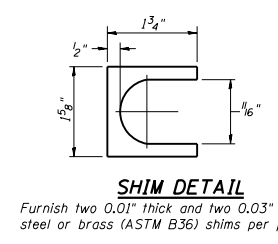
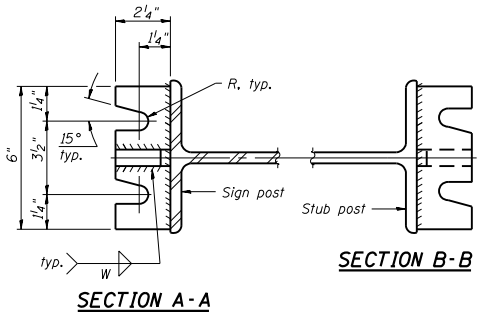
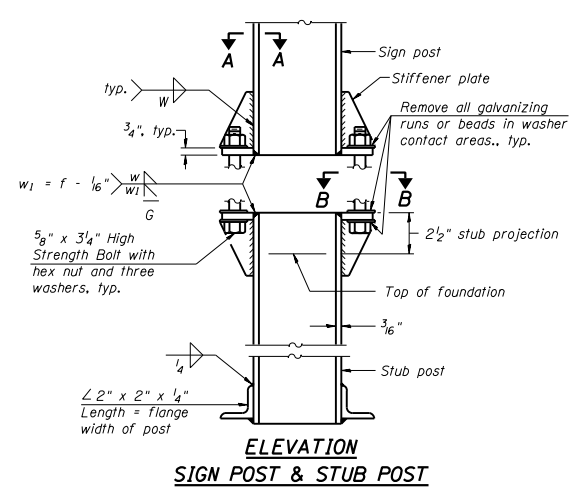
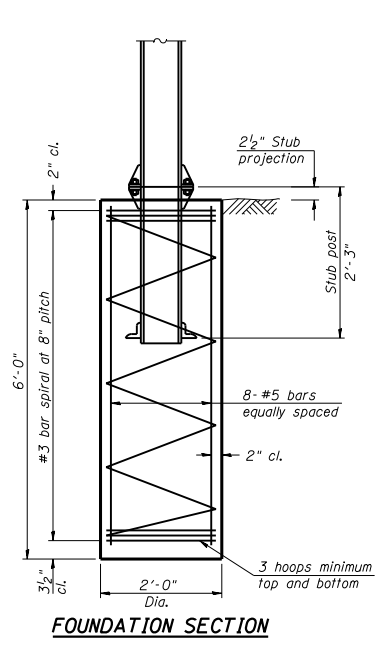


NOTES:

1. SYSTEM CONSISTS OF TWO W6 X 15 I-BEAM SIGNPOSTS WITH CONCRETE FOUNDATION AND A FLANGE WITH BREAKAWAY BOLTS
2. THE I-BEAMS ARE 12' LONG AND DRILLED AS PER THE I-BEAM DETAIL TO ACCOMODATE A PIPE TO ALLOW THE MOUNTING OF THE SOLAR PANEL.
3. THE WEB OF THE I-BEAM IS TO BE PLACED PARALLEL TO THE LANES.
4. THE TWO POSTS MUST BE PLACED DIRECTLY ACROSS FROM EACH OTHER AND PERPENDICULAR TO THE LANES.
5. TWO POSTS ARE REQUIRED LOCATED AS PER THE ENGINEER AND DRAWING.
6. THE CABINETS ARE ATTACHED TO THE I-BEAM USING 8" GALVANIZED J-BOLTS.
7. THE BOTTOM OF THE CABINET HEIGHT MUST BE NO LOWER THAN 4' ABOVE THE GROUND AND BE ABLE TO VIEW ACROSS ALL LANES AT THE CROWN OF THE PAVEMENT.
8. THE IDOT OFFICE OF PLANNING AND PROGRAMMING DATA MANAGEMENT LAB (RAMON TAYLOR or RICH MARX 217-782-2065) SHALL BE NOTIFIED TWO WEEKS PRIOR TO THE LAYOUT AND SHALL BE PRESENT DURING THE PLACEMENT OF THE POST FOUNDATIONS.

TIRTL TRAFFIC COUNTER SCHEDULE OF QUANTITIES (FOR INFORMATION ONLY)

CODE NUMBER	ITEM	UNIT	QUANTITY
72700100	STRUCTURAL STEEL SIGN SUPPORT - BREAKAWAY	POUND	520
73400100	CONCRETE FOUNDATIONS	CU YD	1.4
X0323388	TRAFFIC COUNTER SYSTEM (INCLUDES BELOW)	EACH	1
TIRTL TRAFFIC DATA COLLECTION SYSTEM INCLUDES:			
	Sierra Wireless GX-450 Mobile 4G XLTE Gateway EVD0-Verizon	EACH	1
	Panorama Low Profile LTE MiMo LGAM-BC3G-26-3SP Antenna	EACH	1
	TIRTL CABINET 15" X 27" X 16"	EACH	2
	BATTERY CABINET 16.5" X 16" X 11.5" BBA1M w/ #2 Police Lock	EACH	1
	SOLAR PANEL 60 W 12 VDC with Bracket	EACH	2
	TIRTL TRAFFIC COUNTER	EACH	1
	SUNSAVER SOLAR CHARGE REGULATOR 10 AMP 12 VDC	EACH	2
	BATTERY - 33 AH ABSORBED ELECTROLYTE 8" X 5.5" X 7" (DEEP CYCLE)	EACH	1
	BATTERY -104AH ABSORBED ELECTROLYTE 10" X 6" X 8" (DEEP CYCLE)	EACH	1



GENERAL NOTES

Posts shall be plumbed by using shims with post-to-stub post connection bolts snug tight only. Final tightening of all High Strength Bolts shall be in accordance with Article 727.05 and threads at the junction of the bolt and nut shall be burred or center punched to prevent the nut from loosening.

LOADING: 80 m.p.h. wind with 30% gust factor, normal to sign.

DESIGN STRESSES:
 Structural steel - 20,000 p.s.i.
 Reinforcing steel - 20,000 p.s.i.
 Concrete - 1,400 p.s.i.
 Footing soil pressure - 2,000 p.s.f.

After fabrication, the post and upper 6", min. of the stub post shall be hot-dip galvanized in accordance with AASHTO M11. All bolts, nuts and washers shall be hot-dip galvanized in accordance with AASHTO M232.

BREAK-AWAY WIDE FLANGE STEEL POST DETAILS

FILE NAME = 78440-sh-t43.dgn	USER NAME = Stevek	DESIGNED - R.H.D.	REVISED - J.E.B. 09/24/18	STATE OF ILLINOIS DEPARTMENT OF TRANSPORTATION	TRAFFIC COUNTER DETAIL ROCK CUT STATE PARK		F.A. RTE.	SECTION	COUNTY	TOTAL SHEETS	SHEET NO.
Default	PLOT SCALE = 100.0000' / in.	DRAWN - D.R.C.	REVISED -				ROCK CUT 2018	WINNEBAGO	406	223a	
	PLOT DATE = 10/31/2018	CHECKED - R.H.D.	REVISED -				CONTRACT NO. 46903				
		DATE - 08/31/18	REVISED -				ILLINOIS FED. AID PROJECT				