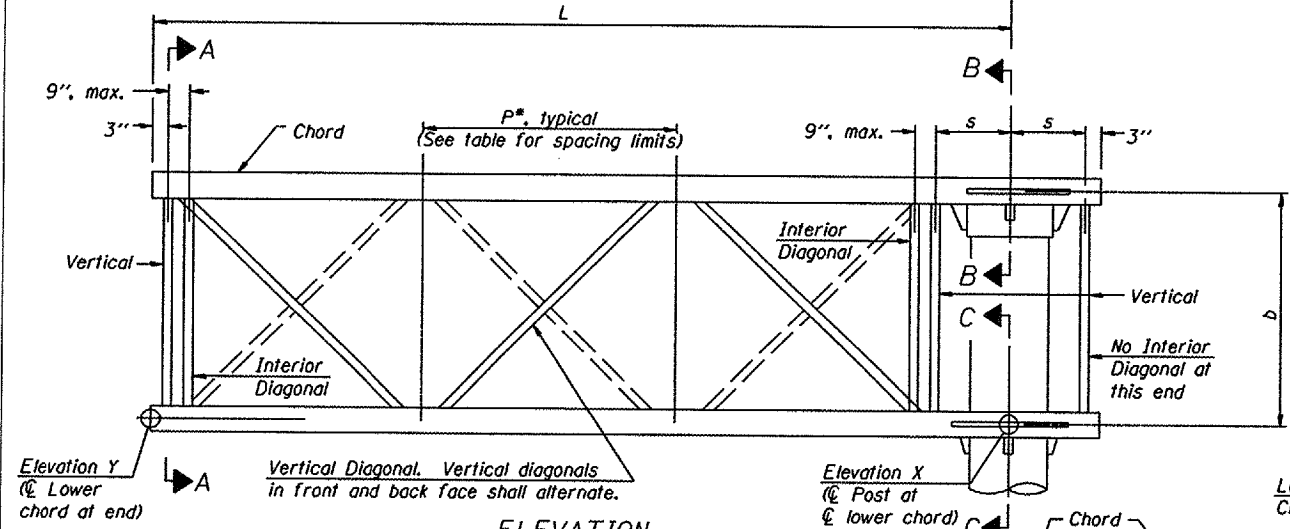
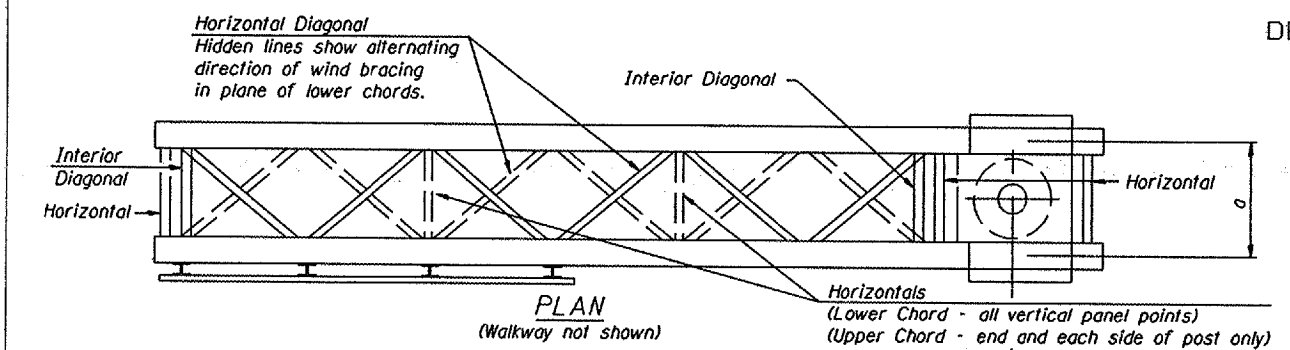
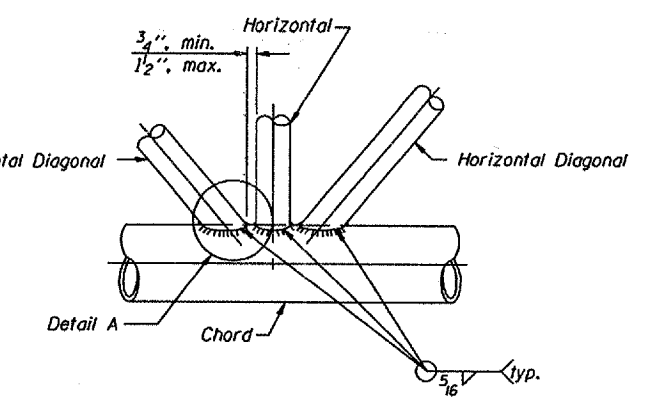
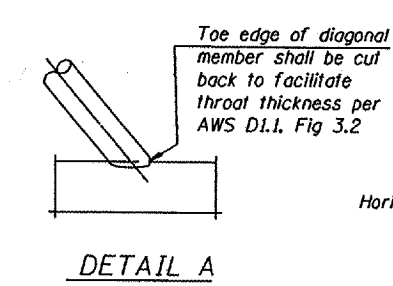
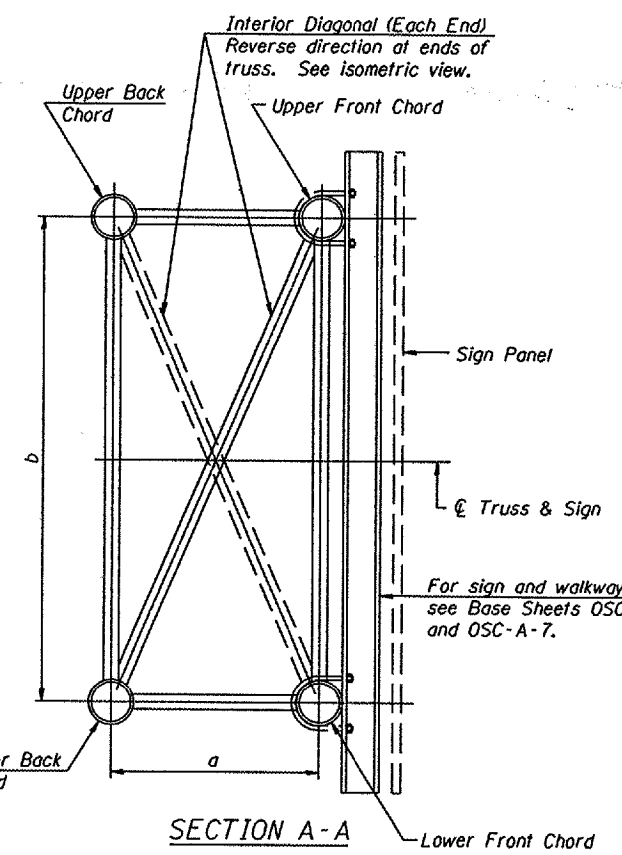


STATE OF ILLINOIS  
DEPARTMENT OF TRANSPORTATION

Various Routes  
OVD SIN STR REP & REPL 2008-9  
Various Counties  
Sheet 9 of 105  
Contract Number 44973



**ELEVATION**  
(Sign and walkway omitted for clarity)  
**TYPICAL TRUSS UNIT**  
For Section B-B and Section C-C, see Base Sheet OSC-A-3.

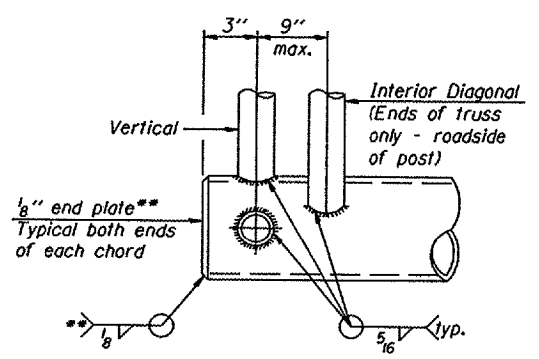


**TRUSS INTERIOR JOINT DETAIL**

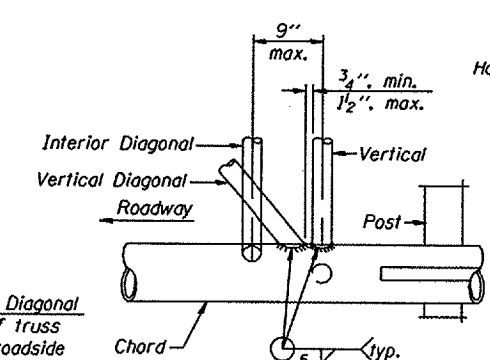
This Sheet For Information Only

Structure Number	Station	Truss Type	Design Length (L)	Number of Panels Per Unit	Panel Length (P)*
IC049U041R000.0-004		I-C-A	25'-0"	6	3' - 10 3/4"

Note:  
There are twice as many horizontal diagonals as there are vertical diagonals.



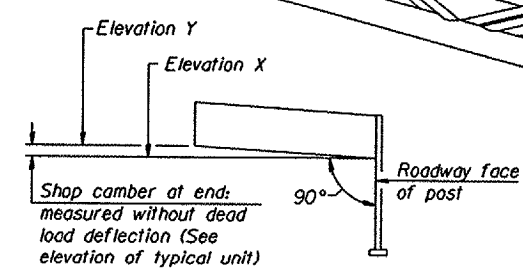
**CANTILEVER END JOINT DETAIL**  
\*\* Contractor may alternatively use standard aluminum drive-fit cap to close ends.



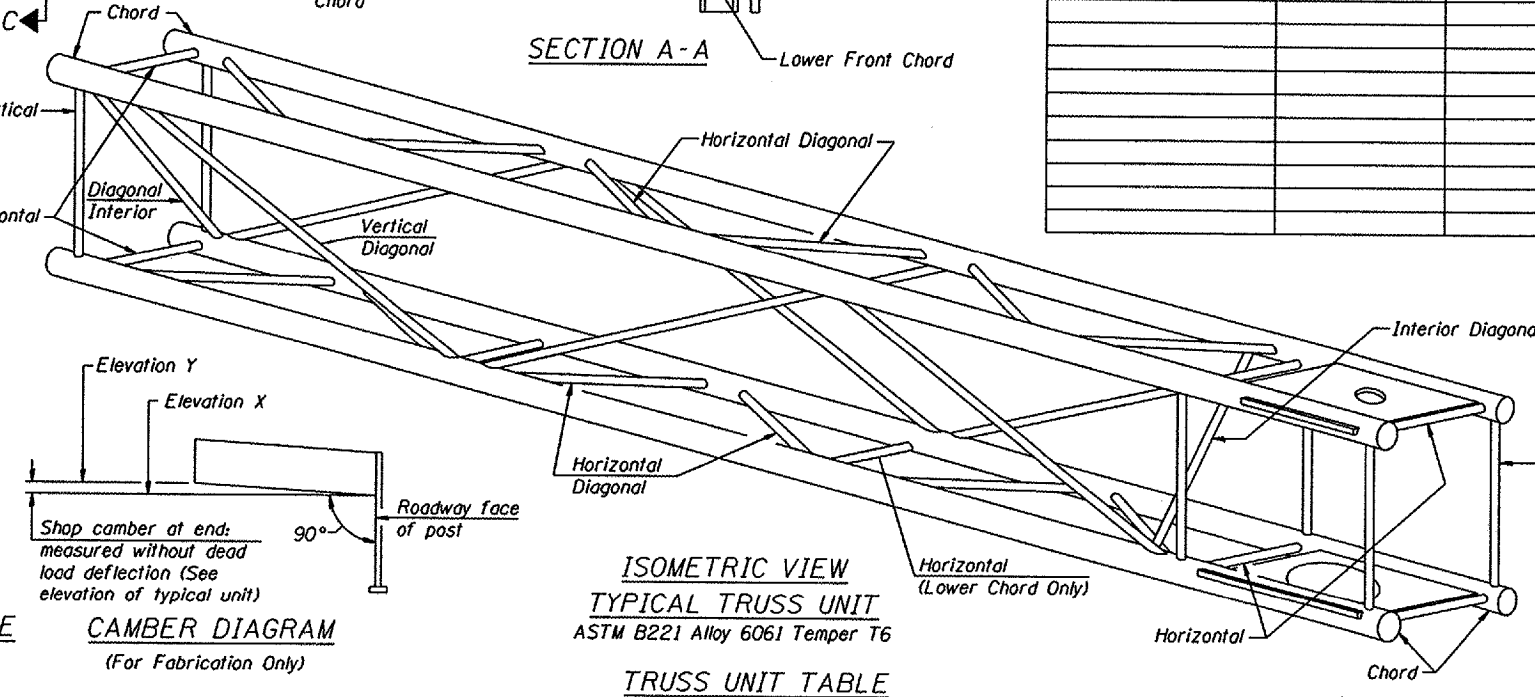
**POST END JOINT DETAIL**

**SHOP CAMBER TABLE**

Unit Length (L)	Shop Camber at End
15'	1 1/2"
16'-17'	1 3/4"
18'-20'	2"
21'-22'	2 1/4"
23'-25'	2 3/4"
26'-27'	2 3/4"
28'-30'	3"
31'-32'	3 1/4"
33'-35'	3 1/2"
36'-37'	4"
38'-40'	4 1/2"



**CAMBER DIAGRAM**  
(For Fabrication Only)



**ISOMETRIC VIEW**  
**TYPICAL TRUSS UNIT**  
ASTM B221 Alloy 6061 Temper T6  
**TRUSS UNIT TABLE**

Truss Type	Dimension "a"	Dimension "b"	Dimension "s"	Limits for Panel Spacing (P)*	Up. & Low. Chord		Verticals, Horizontals, Vertical, Horizontal, and Interior Diagonals	
					O.D.	Wall	O.D.	Wall
I-C-A	24"	54"	16"	36" min. to 48" max.	5"	5/16"	2 1/2"	5/16"
II-C-A	36"	66"	21"	42" min. to 54" max.	6 1/2"	5/16"	3 1/4"	5/16"
III-C-A (35' Max.)	36"	84"	21"	48" min. to 66" max.	7"	3/8"	3 1/2"	3/8"
III-C-A (>35' to 40')	36"	84"	21"	48" min. to 66" max.	8"	3/8"	3 1/2"	3/8"

\*P =  $\frac{L-s-3"}{\# \text{ Panels}}$

NUMBER	REVISION	DATE

**CANTILEVER SIGN STRUCTURES**  
**TRUSS DETAILS**  
**ALUMINUM TRUSS & STEEL POST**

District 1  
Overhead Sign Structure  
Repair and Replacement

DESIGNED -	20
CHECKED -	EXAMINED
DRAWN -	PASSED
CHECKED -	ENGINEER OF BRIDGES AND STRUCTURES

OSC-A-2      6/01/2007