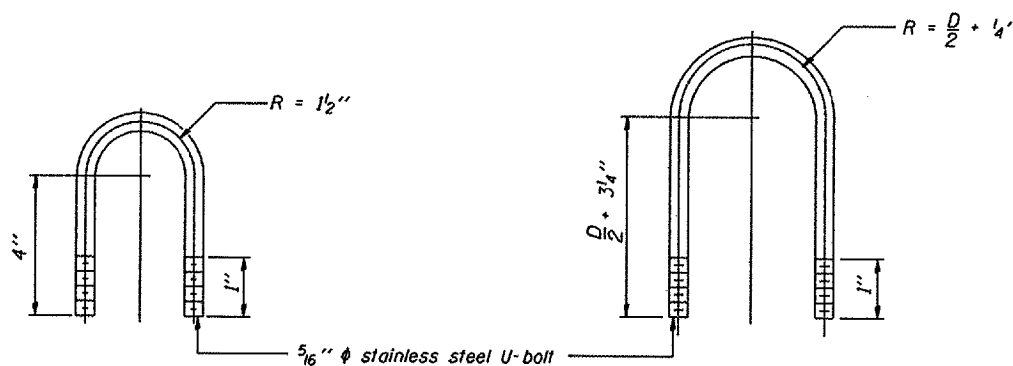
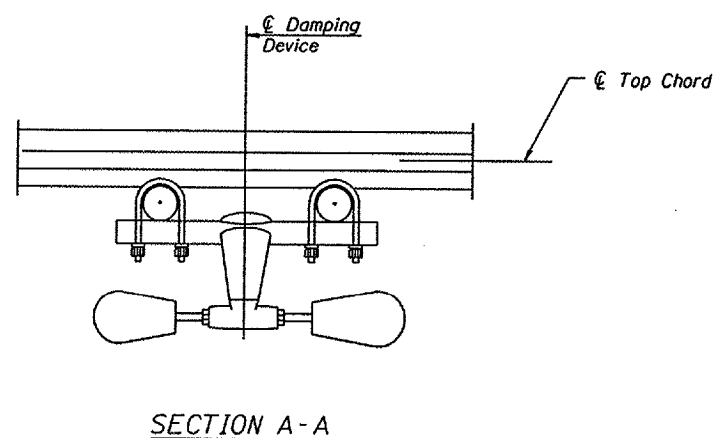


**GENERAL NOTES**

Damper: One damper per truss. (31 lbs. Stockbridge-Type Aluminum-29" minimum between ends of weights)

Materials: Aluminum tubes shall be ASTM B221 alloy 6061 temper T6



This Sheet For Information Only

DESIGNED -	20
CHECKED -	EXAMINED
DRAWN -	PASSED
CHECKED -	ENGINEER OF BRIDGE DESIGN
	ENGINEER OF BRIDGES AND STRUCTURES

OSC-A-D 6/01/2007

CANTILEVER SIGN STRUCTURE DAMPING DEVICE
District 1 Overhead Sign Structure Repair and Replacement