

CONTRACT NO. 60C19	FA RTE.	SECTION	COUNTY	TOTAL SHEETS	SHEET NO.
	338	114 BY-R-1	WILL.	139	1

+2
141
D-91-124-02

INDEX OF SHEETS

SEE SHEET NO. 2

STANDARDS

SEE SHEET NO. 2

TRAFFIC DATA

ADT (IL RTE 59) = 30,600 = SPEED LIMIT 45 MPH

PROJECT LOCATION

CITY OF JOLIET
WILL COUNTY

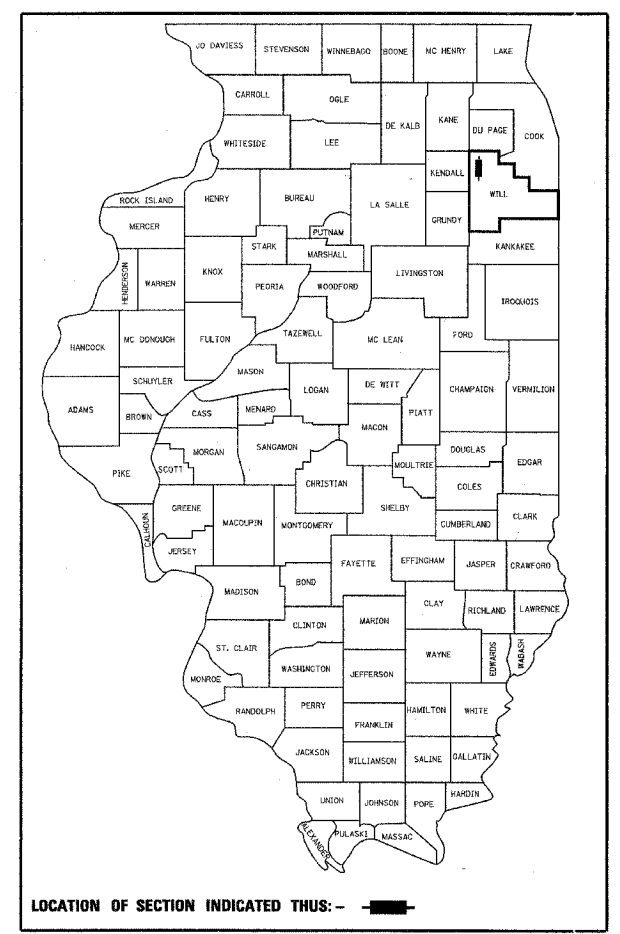
DESIGN DESIGNATION

1,745 (24) OTHER PRINCIPAL ARTERIAL 11.85 (PCC-20)

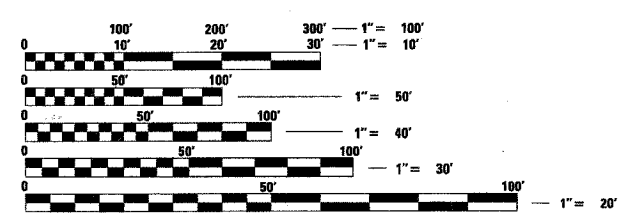
STATE OF ILLINOIS
DEPARTMENT OF TRANSPORTATION
DIVISION OF HIGHWAYS

**PROPOSED
HIGHWAY PLANS
(FAP 338) IL ROUTE 59
BRIDGE OVER THE DUPAGE RIVER**

SECTION 114 BY-R-1
PROJECT NO. ACBRF-0338(032)
BRIDGE REPLACEMENT
WILL COUNTY
C-91-160-07



LOCATION OF SECTION INDICATED THUS: -



FULL SIZE PLANS HAVE BEEN PREPARED USING STANDARD ENGINEERING SCALES, REDUCED SIZED PLANS WILL NOT CONFORM TO STANDARD SCALES, IN MAKING MEASUREMENTS ON REDUCED PLANS, THE ABOVE SCALES MAY BE USED.

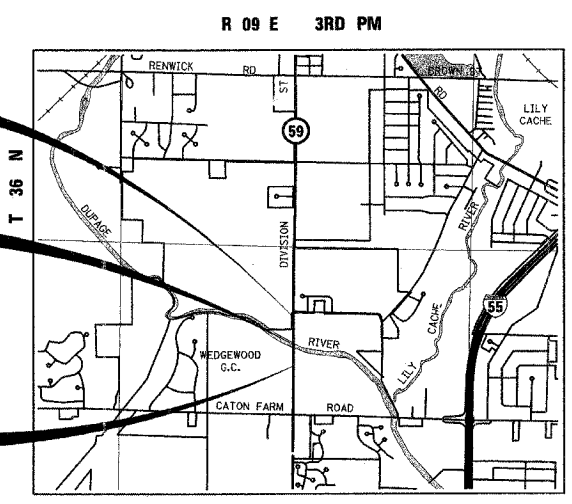
J.U.L.I.E.
JOINT UTILITY LOCATION INFORMATION FOR EXCAVATION
1-800-892-0123

CONTRACT NO. 60C19

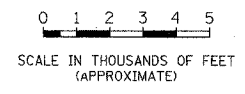
END OF IMPROVEMENT
IL ROUTE 59
STA. 3218 + 00

SN 099-0143 (EXISTING)
SN 099-0339 (PROPOSED)
IL 59 STRUCTURE OVER
THE DUPAGE RIVER
☐ STA. 3209 + 85

BEGIN OF IMPROVEMENT
IL ROUTE 59
STA. 3203 + 00



PLAINFIELD TOWNSHIP
LOCATION MAP



NET LENGTH OF PROJECT = 1,500 FEET = 0.284 MILES
GROSS LENGTH OF PROJECT = 1,500 FEET = 0.284 MILES



SIGNED: *John C. Murillo*
John C. Murillo, P.E. Il. Lic. No. 062-052397
Expires 11/30/2007

DATE: 6/01/07
EXCLUDES DRAWING NO. S-01 TO S-34



SIGNED: *William P. Murphy*
William P. Murphy, S.E. Il. Lic. No. 081-004491
Expires 11/30/2008

DATE: 6/11/07
FOR STRUCTURAL DRAWING NO. S-01 TO S-34

STATE OF ILLINOIS
DEPARTMENT OF TRANSPORTATION
DIVISION OF HIGHWAYS

SUBMITTED June 6 2007

Diane O'Keefe
DISTRICT ENGINEER

October 12, 2007
Eric E. Harman
ENGINEER OF DESIGN AND ENVIRONMENT

October 12, 2007
Milton R. Seay
DIRECTOR, DIVISION OF HIGHWAYS

Plans Prepared By:
KNIGHT
Engineers & Architects

221 North LaSalle Street
Suite 300
Chicago, IL 60601-1211
Phone: (312) 577-3300

**PRINTED BY THE AUTHORITY
OF THE STATE OF ILLINOIS**

PROJECT COORDINATOR: MS. KIM HARVEY (847)-705-4055

Rev. 10-31-07