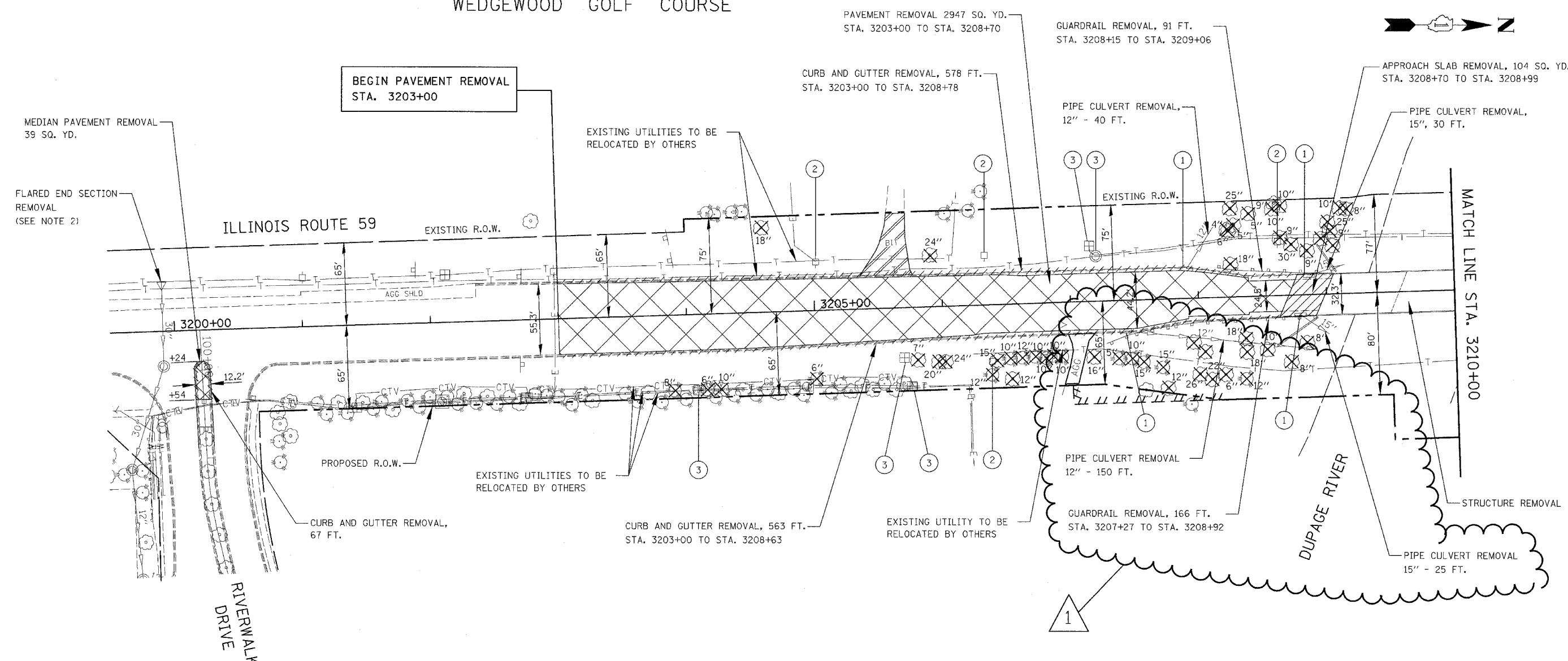


FAP NO.	SECTION	COUNTY	TOTAL SHEETS	SHEET NO.
338	114 BY-R-1	WILL	139	31
STA. 3190+00		TO STA. 3202+00		
FED. ROAD DIST. NO.	ILLINOIS	FAP 338 (IL RTE. 59)		

WEDGEWOOD GOLF COURSE



LEGEND

- 8" TREE REMOVAL (DIA.)
- PAVEMENT REMOVAL
- APPROACH PAVEMENT REMOVAL
- EXISTING BITUMINOUS DRIVEWAY TO BE REMOVED (PAID FOR AS EARTH EXCAVATION)
- EXISTING AGGREGATE DRIVEWAY TO BE REMOVED (PAID FOR AS EARTH EXCAVATION)
- CURB AND GUTTER REMOVAL
- (1) INLET TO BE REMOVED
- (2) UTILITY POLE TO BE RELOCATED BY OTHERS
- (3) UTILITY RISER TO BE RELOCATED BY OTHERS

NOTE

- SEE SCHEDULE OF QUANTITY SHEETS FOR TREE REMOVAL SCHEDULE.
- FLARED END SECTION REMOVAL SHALL BE PAID FOR AS "PIPE CULVERT REMOVAL".

REVISIONS	
NAME	DATE
ADDENDUM A	10-26-07

ILLINOIS DEPARTMENT OF TRANSPORTATION
DISTRICT NO. 1 SCHAUMBURG

REMOVAL PLANS

SCALE AS SHOWN
DATE AUGUST 17, 2007

DRAWN BY BSB/KGP
CHECKED BY JCM

