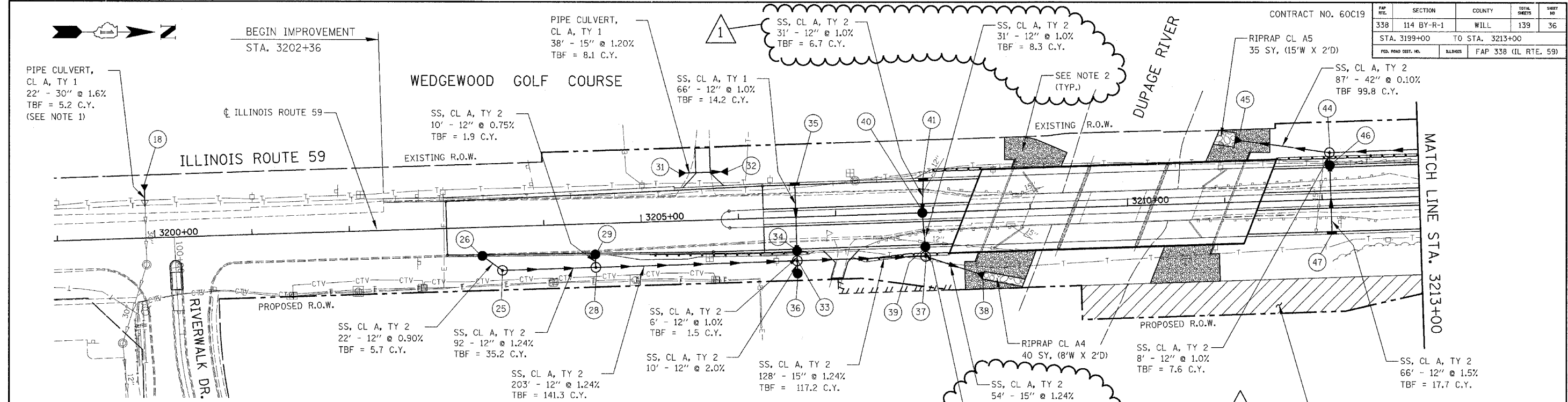
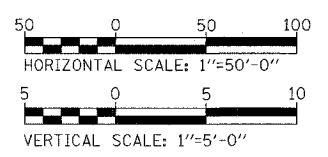


CONTRACT NO. 60C19	FAP NO. 338	SECTION 114 BY-R-1	COUNTY WILL	TOTAL SHEETS 139	SHEET NO. 36
	STA. 3199+00	TO STA. 3213+00			
	FED. ROAD DIST. NO.	BILLINGS	FAP 338 (IL RTE. 59)		

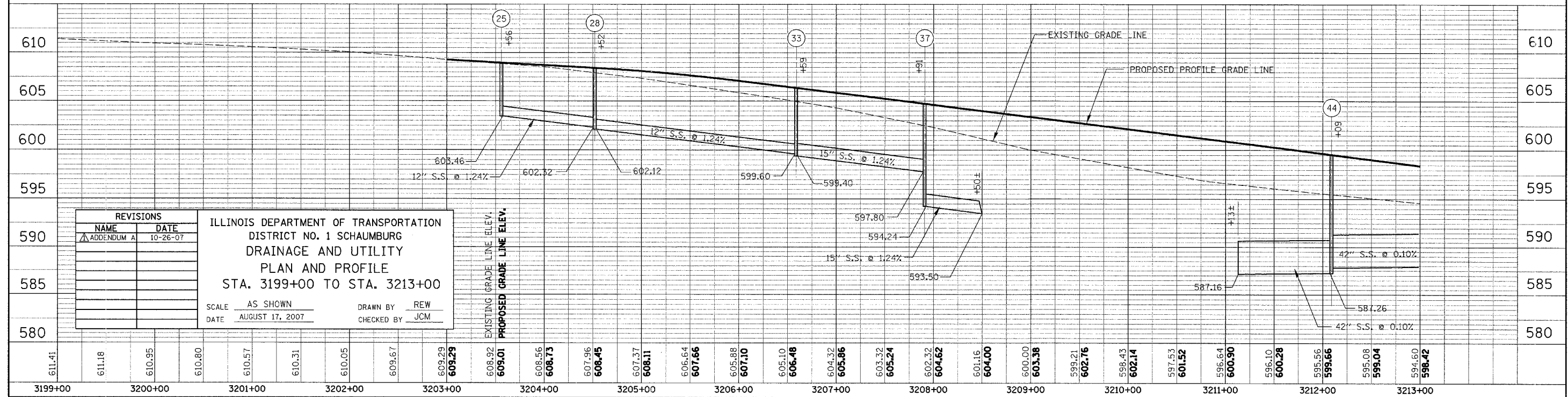


NO.	STATION	OFFSET	TYPE	FRAME	RIM	N. INV.	S. INV.	E. INV.	W. INV.	NO.	STATION	OFFSET	TYPE	FRAME	RIM	N. INV.	S. INV.	E. INV.	W. INV.
18	3199+91	55' LT	FES-30	N/A	N/A			606.74		37	3207+91	45' RT	MH-DT4	T1-CL	604.75	594.24	597.80		598.80
25	3203+56	45' RT	MH-A4	T1-CL	608.26	603.46	603.56			38	3208+50	66' RT	FES-15	N/A	N/A	593.50			
26	3203+36	32' RT	CB-A4	T-24	608.46			603.76		39	3207+91	35' RT	CB-A4	T-24	604.13			598.86	599.06
28	3204+52	45' RT	MH-A4	T1-CL	606.89	602.12	602.32		602.92	40	3207+89	0' LT	CB-A4	T-8	604.52			599.37	599.57
29	3204+50	32' RT	CB-A4	T-24	607.77			603.00		41	3207+91	34' LT	IN-A	T-24	604.13			599.88	
30	NOT USED									42	NOT USED								
31	3205+40	49' LT	FES-15	N/A	N/A		605.62			43	NOT USED								
32	3205+90	49' LT	FES-15	N/A	N/A	605.02				44	3212+09	48' LT	MH-DT6	T1-CL	598.27	587.82	587.26	593.16	
33	3206+59	45' RT	MH-A4	T1-CL	605.49	599.40	599.60	600.03	600.60	45	3211+13	64' LT	FES-42	N/A	N/A		587.16		
34	3206+59	34' LT	CB-A4	T-24	605.77			600.66	600.86	46	3212+09	35' LT	CB-A4	T-24	598.95			593.44	593.24
35	3206+59	35' RT	IN-A	T-24	605.77			601.52		47	3212+09	34' RT	IN-A	T-24	598.95			594.43	
36	3206+59	58' RT	CB-C	T-8	604.40			600.23											



**NOTES**

- PROPOSED PIPE CULVERT SHALL BE CONNECTED TO THE EXISTING 30" PIPE CULVERT AND SHALL BE IN ACCORDANCE WITH IDOT DISTRICT 1 STANDARD BD-07, SEE SHEET 105.
- SEE STRUCTURAL PLANS FOR RIPRAP DETAILS.



REVISIONS	
NAME	DATE
ADDENDUM A	10-26-07

ILLINOIS DEPARTMENT OF TRANSPORTATION  
DISTRICT NO. 1 SCHAUMBURG  
DRAINAGE AND UTILITY  
PLAN AND PROFILE  
STA. 3199+00 TO STA. 3213+00

SCALE AS SHOWN      DRAWN BY REW  
DATE AUGUST 17, 2007      CHECKED BY JCM

PLAN  
DESIGNED BY  
CHECKED BY  
DATE

PROFILE  
DESIGNED BY  
CHECKED BY  
DATE