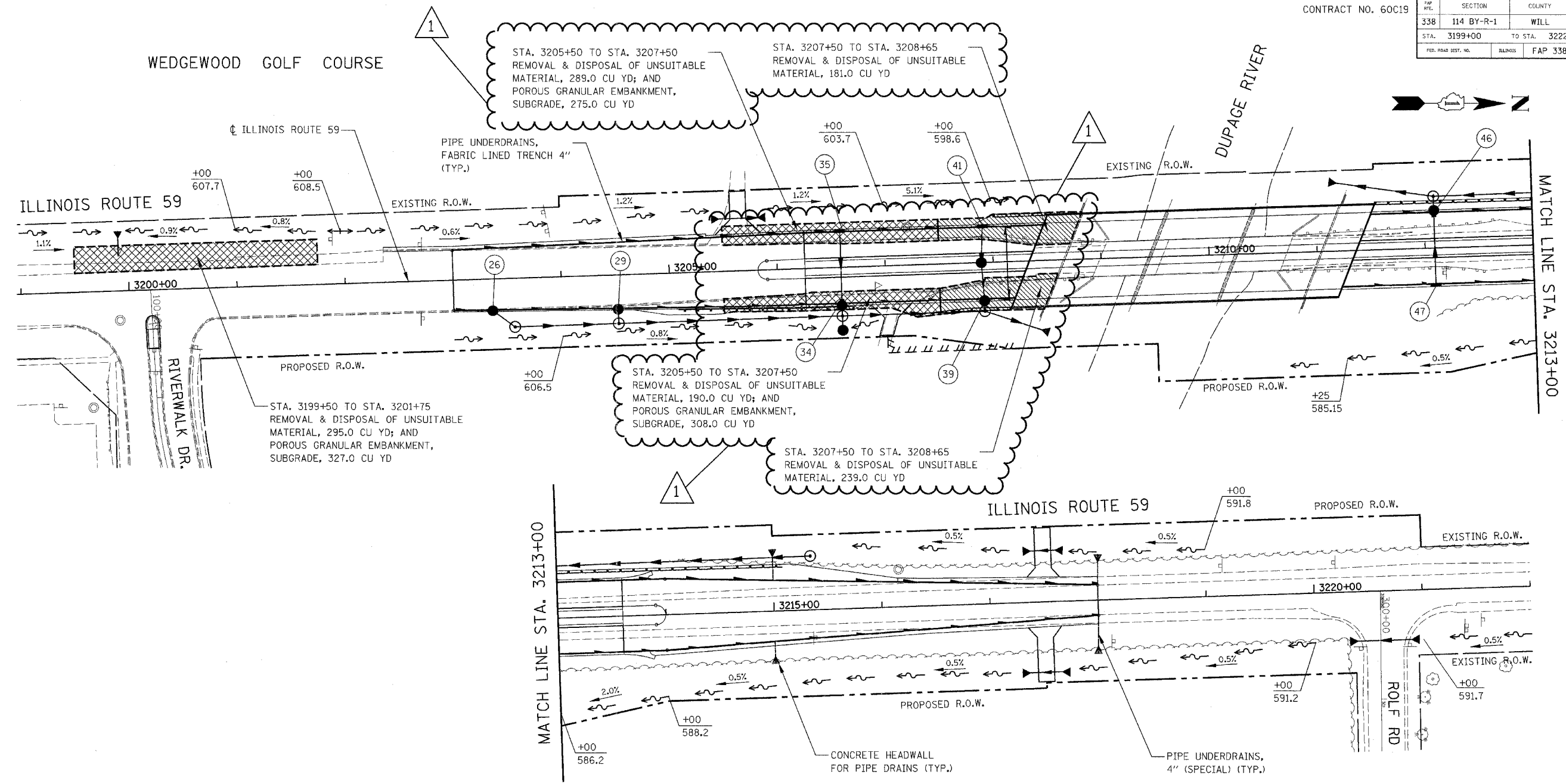


FAP NO.	SECTION	COUNTY	TOTAL SHEETS	SHEET NO.
338	114 BY-R-1	WILL	139	38
STA.	TO STA.			
3199+00	3222+00			
FED. ROAD DIST. NO.	ILLINOIS	FAP 338 (IL RTE. 59)		



PIPE UNDERDRAINS, FABRIC LINED TRENCH 4"								
PIPE UNDERDRAINS, 4" (SPECIAL)								
CONCRETE HEADWALL FOR PIPE DRAINS								
UP STATION	DOWN STATION	RUN LOCATION	P UNDR FAB LINE TR 4 (FT)	PIPE UNDER-DRAIN 4 SP (FT)	DEPTH (IN)	CONC HDWL FOR P DRAIN (EACH)	OUTLET STRUCTURE NO.	OUTLET STRUCTURE LOCATION
3203+00	3203+36	N.B. - RT	32	4	29		26	
3203+38	3204+52	N.B. - RT	110	4	29		29	
3204+54	3206+59	N.B. - RT	201	4	34		34	
3206+61	3207+91	N.B. - RT	126	4	34		39	
3208+20	3207+93	N.B. - RT	23	4	34 - 39		39	
3203+00	3206+59	S.B. - RT	356	3	34		35	
3206+60	3207+91	S.B. - RT	127	4	34		41	
3208+48	3207+92	S.B. - RT	52	4	34 - 40		41	
3208+13	3208+13	N.B. - LAT.	33	0	34 - 36		N.B. - RT	
3208+13	3208+13	S.B. - LAT.	33	0	34 - 36		S.B. - RT	
BRIDGE OVER DUPAGE RIVER								
3211+22	3212+09	N.B. - RT	85	3	34		47	
3212+10	3215+00	N.B. - RT	290	21	34	1	P.U.D. HEADWALL	STA. 3215+00, 48.8' RT, INV 592.13
3215+02	3218+00	N.B. - RT	298	36	29	1	P.U.D. HEADWALL	STA. 3218+00, 49.4' RT, INV 591.49
3211+50	3212+09	S.B. - RT	55	4	34		46	
3212+11	3215+00	S.B. - RT	289	29	34	1	P.U.D. HEADWALL	STA. 3215+00, 57.2' LT, INV 591.96
3215+02	3218+00	S.B. - RT	298	29	29	1	P.U.D. HEADWALL	STA. 3218+00, 42.3' LT, INV 591.85
TOTAL			2408	153		4		

LEGEND

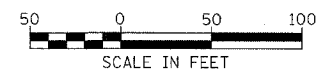
- PIPE UNDERDRAINS, FABRIC LINED TRENCH 4"
- PIPE UNDERDRAINS, 4" (SPECIAL)
- PROPOSED DITCH LINE
- HIGH POINT PROPOSED DITCH
- DITCH SLOPE
- CONCRETE HEADWALL FOR PIPE DRAINS

NOTES:

1. SEE STRUCTURAL PLANS FOR ABUTMENT WALL DRAINS.
2. SEE CROSS-SECTIONS FOR DEPTH OF UNDERCUT; AND DITCH INFORMATION.

REVISIONS	
NAME	DATE
ADDENDUM A	10-26-07

ILLINOIS DEPARTMENT OF TRANSPORTATION  
DISTRICT NO. 1 SCHAUMBURG  
**PIPE UNDERDRAINS,  
UNDERCUT AND  
DITCH ELEVATION PLAN**



SCALE AS SHOWN  
DATE AUGUST 17, 2007  
DRAWN BY RTA  
CHECKED BY JCM