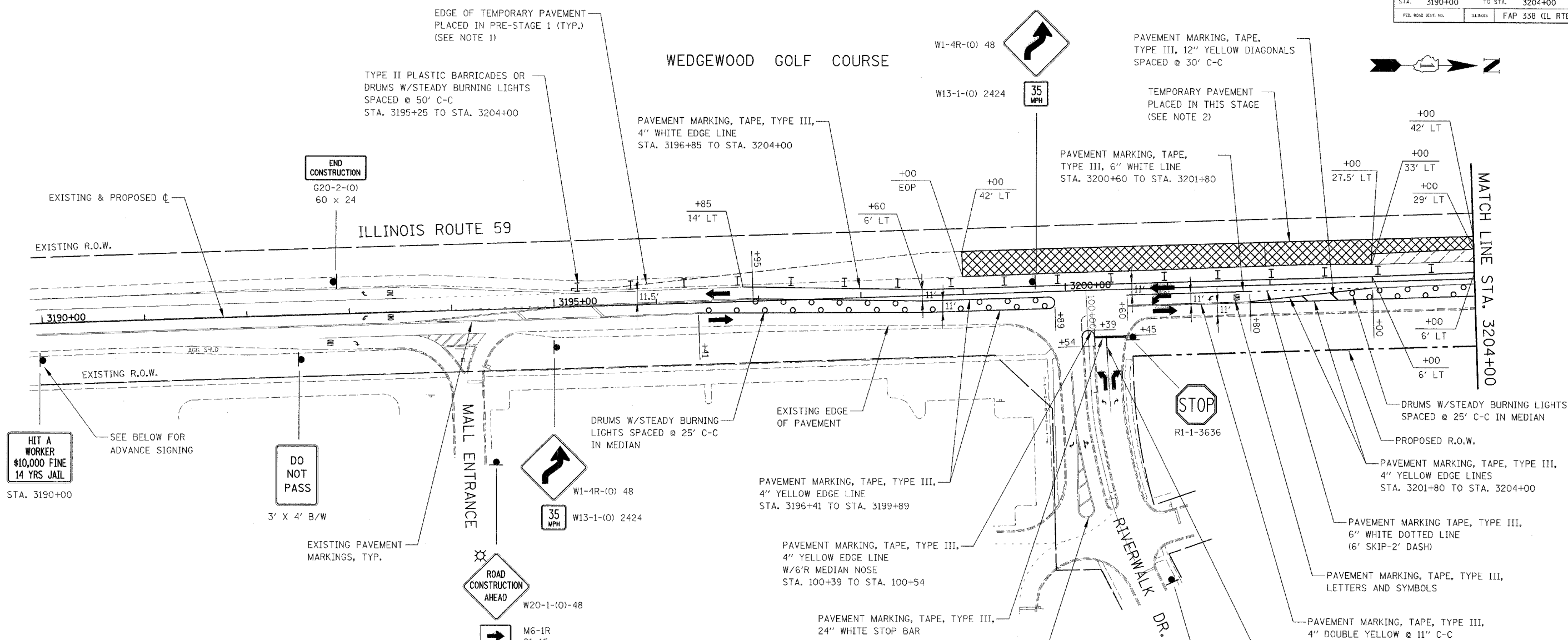
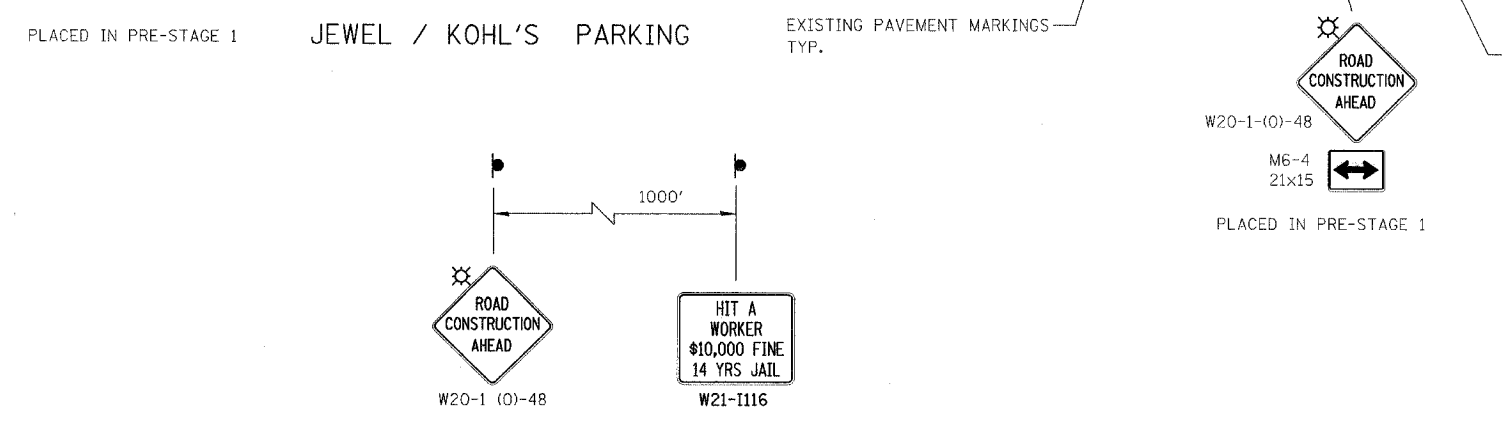


FAP REC.	SECTION	COUNTY	TOTAL SHEETS	SHEET NO.
338	114 BY-R-1	WILL	139	19
STA. 3190+00		TO STA. 3204+00		
FED. ROAD DIST. NO.		ILLINOIS		FAP 338 (IL RTE. 59)



- LEGEND**
- CONSTRUCTION WORK ZONE
 - TEMPORARY PAVEMENT PLACED IN THIS STAGE
 - DIRECTION OF TRAFFIC
 - TYPE II PLASTIC BARRICADES OR DRUMS
 - TRAFFIC WARNING OR CHANNELIZATION DRUM
 - VERTICAL PANEL
 - TEMPORARY SOIL RETENTION SYSTEM
 - SIGN LOCATION
 - TYPE III BARRICADE LOCATION
 - FLASHING YELLOW LIGHT



- NOTES**
- SEE PLANS FOR LOCATION AND DIMENSIONS OF TEMPORARY PAVEMENT PLACED IN PRE-STAGE 1.
 - TEMPORARY PAVEMENT SHALL BE CONSTRUCTED IN ACCORDANCE WITH DETAIL ON SHEET NO. 102. THIS WORK SHALL BE PAID FOR AT THE CONTRACT UNIT PRICE FOR TEMPORARY PAVEMENT.
 - SEE CROSS SECTIONS FOR GRADING DETAILS.



ILLINOIS DEPARTMENT OF TRANSPORTATION
 DISTRICT NO. 1 SCHAUMBURG
 STAGING PLANS
 ILLINOIS ROUTE 59
 STAGE 1

SCALE AS SHOWN
 DATE AUGUST 17, 2007
 DRAWN BY REW
 CHECKED BY JCM