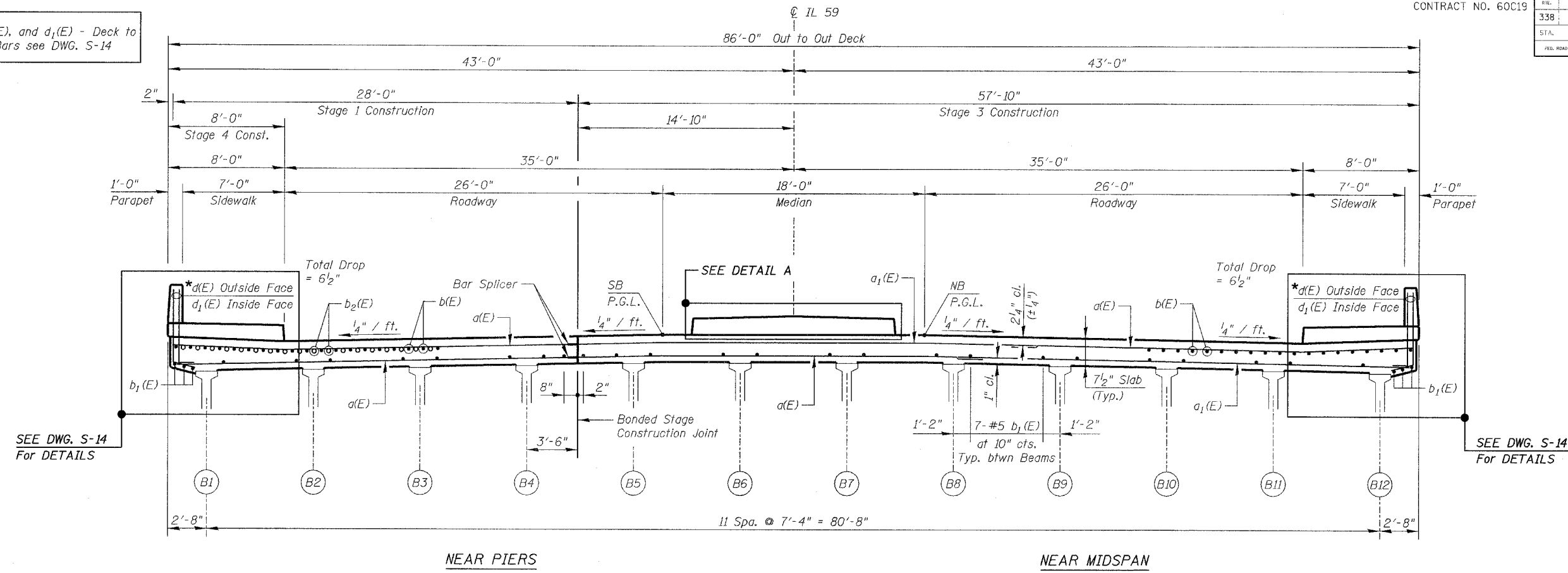


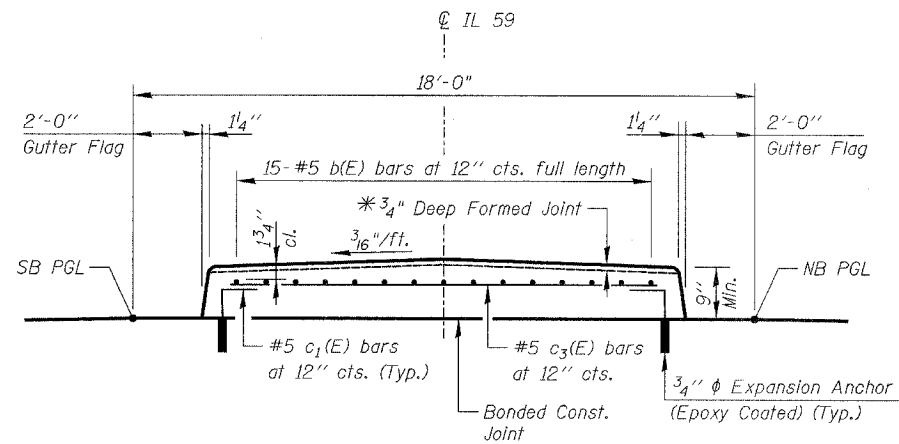
FAP R/E	SECTION	COUNTY	TOTAL SHEETS	SHEET NO
338	114 BY-R-1	WILL	139	72
STA.		TO STA.		
FED. ROAD DIST. NO.	DISTRICT	FED. AID PROJECT		

* For $c(E)$, $c_1(E)$, $d(E)$, and $d_1(E)$ - Deck to Sidewalk/Parapet Bars see DWG. S-14



MIN. BAR LAPS:
 #5 = 1'-8"
 #7 = 2'-9"

CROSS SECTION
(Looking North)



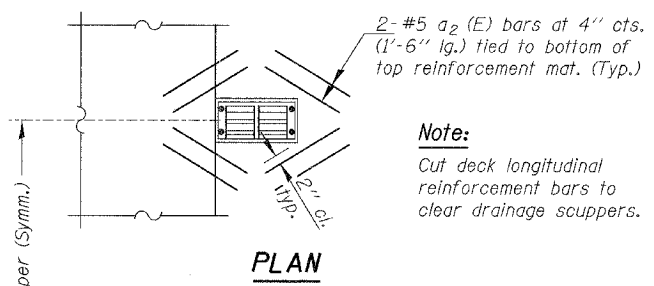
DETAIL A

* 3/4" Deep Formed Joints located at same locations as the aluminum sheets in the sidewalks detailed on DWG. S-14.

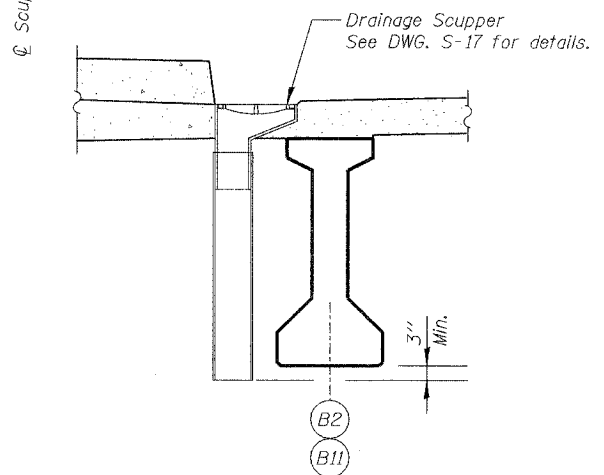
Notes:

- Reinforcement Bars designated (E) shall be epoxy coated.
- SEE DWG. S-14 for Sidewalk & Parapet Details.
- SEE DWG. S-16 for Deck Misc. Details and Bill of Material.
- SEE DWG. S-17 for Drainage Scupper Details.

The Expansion Anchors shall have a minimum proof load tension of 7,500 lbs. The cost of furnishing and installing Expansion Anchors (Epoxy Coated) shall be included in the cost of "Reinforcement Bars, Epoxy Coated".
 Work this DWG. with DWGS. S-12 & S-14 thru S-16.



Note:
 Cut deck longitudinal reinforcement bars to clear drainage scuppers.



SECTION AT SCUPPERS

REVISIONS	
NAME	DATE

DWG. S-13 of 34
 ILLINOIS DEPARTMENT OF TRANSPORTATION
DECK CROSS SECTION & DETAILS
 ILLINOIS ROUTE 59 OVER DuPAGE RIVER
 FAP ROUTE 338 SECTION 114 BY-R-1
 WILL COUNTY
 STATION 3209+85.00
 STRUCTURE NUMBER 099-0339
 SCALE: NONE DESIGNED BY: SB DRAWN BY: TL
 DATE: 08/17/07 CHECKED BY: WPM CHECKED BY: SB

FILE: L:\6632\01\Coord\Sheets\Roadway Structures\Bridge\663201-S0339-DK02.dgn