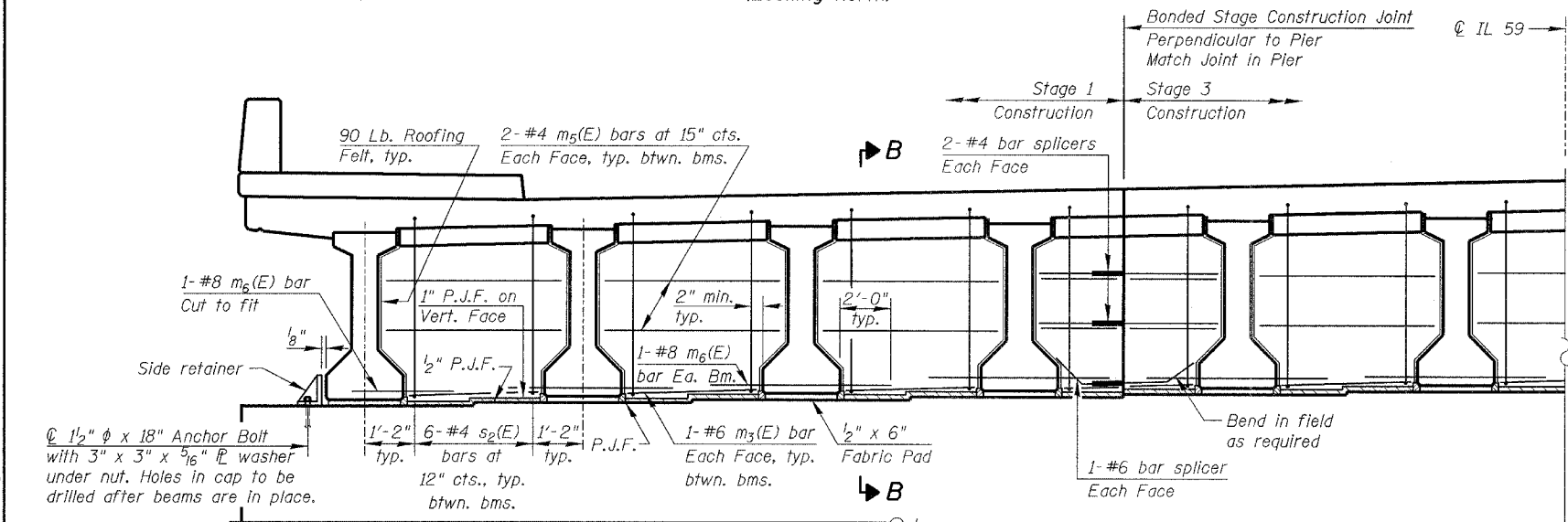
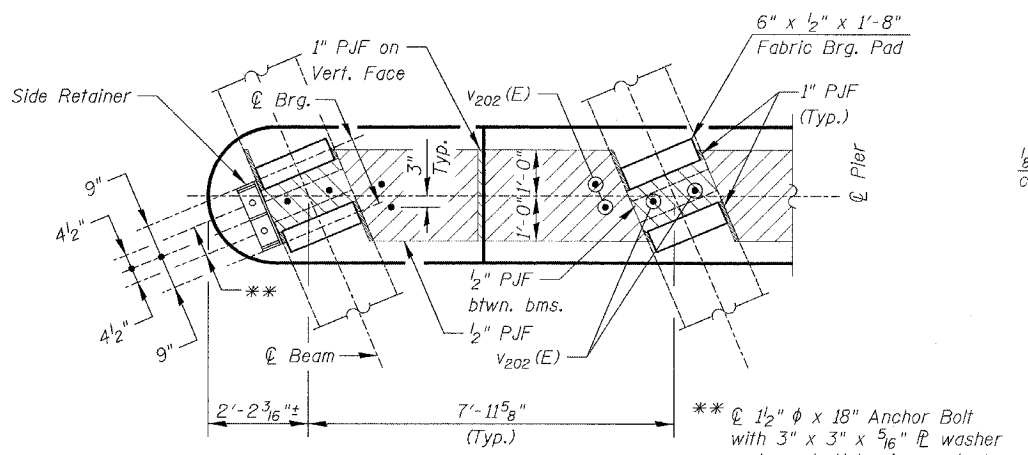


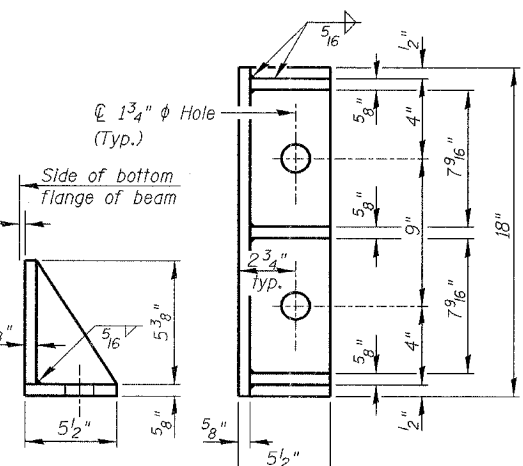
**DIAPHRAGM ELEVATION AT ABUTMENT**  
(Looking North)



**DIAPHRAGM ELEVATION AT PIER**  
(Looking North)

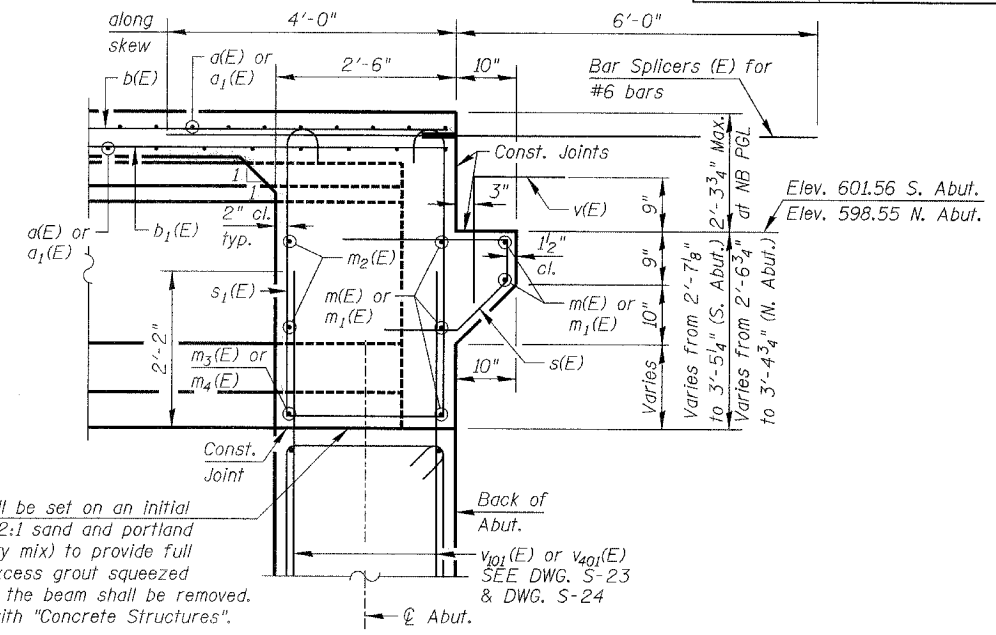


**PLAN AT PIER**  
(Showing bearing pad and PJF details)



**SIDE RETAINER**  
(4 Required)

Equivalent rolled angle with stiffeners will be allowed in lieu of welded plates.

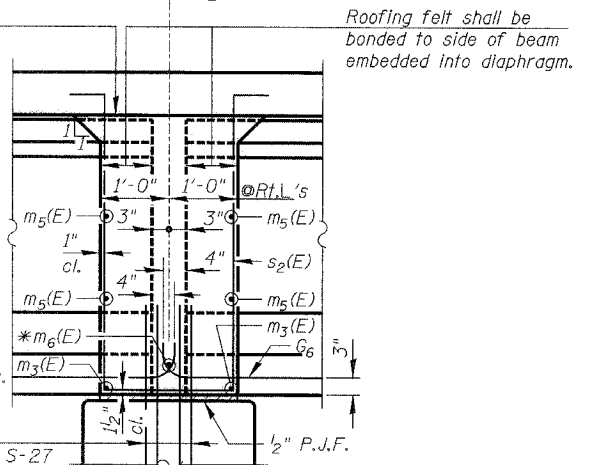


**SECTION A-A**

Dimensions at right angles to abutment, except as shown.

Beam ends shall be set on an initial 1/2" min. grout (2:1 sand and portland cement, very dry mix) to provide full bearing. Any excess grout squeezed out from under the beam shall be removed. Cost included with "Concrete Structures".

Pour diaphragm flush with bottom of slab. Concrete in slab above this line shall be placed not less than 45 min. nor more than 90 min. after diaphragm has been poured.



**SECTION B-B**

Dimensions along CL of beam, except as shown.

**Notes:**

- Reinforcement bars in diaphragm are billed with superstructure on DWG. S-16.
- Concrete in diaphragm is included with "Concrete Superstructure" on DWG. S-16.
- For details of bars s(E), s1(E) and s2(E) see DWG. S-16.
- The s(E), s1(E) and s2(E) bars shall be placed parallel to the beams. Spacing for these bars shall be at right angles to the beams.
- Cost of 90 Lb. roofing felt is included with "Concrete Superstructure".
- The side retainer shall be galvanized after shop fabrication according to AASHTO M 111 and ASTM A 385. Cost of side retainer and anchor bolts shall be included with "Concrete Structures".
- See DWG. S-22 for anchor bolt details.
- Work this DWG. with DWGS. S-12 thru S-14 & S-16.
- Reinforcement Bars designated (E) shall be epoxy coated.
- Cost of Fabric Bearing Pad included with "Concrete Superstructure".

**MIN. BAR LAP**  
#6 bar = 2'-9"

DWG. S-15 of 34

REVISIONS		ILLINOIS DEPARTMENT OF TRANSPORTATION <b>DECK DIAPHRAGM DETAILS</b> ILLINOIS ROUTE 59 OVER DuPAGE RIVER FAP ROUTE 338 SECTION 114 BY-R-1 WILL COUNTY STATION 3209+85.00 STRUCTURE NUMBER 099-0339
NAME	DATE	
		SCALE: NONE DATE: 08/17/07 DESIGNED BY: SB CHECKED BY: WPM DRAWN BY: TL CHECKED BY: SB