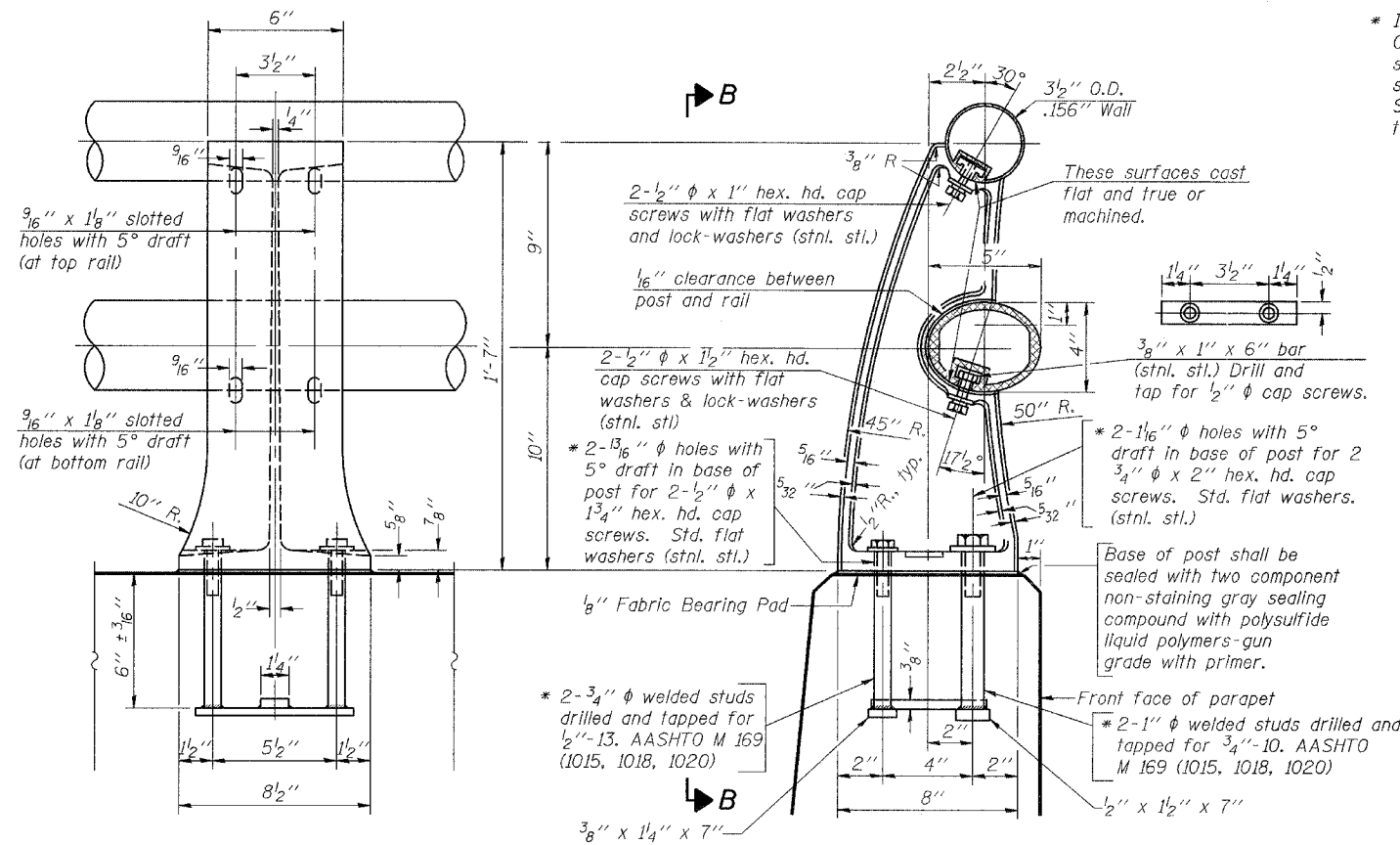
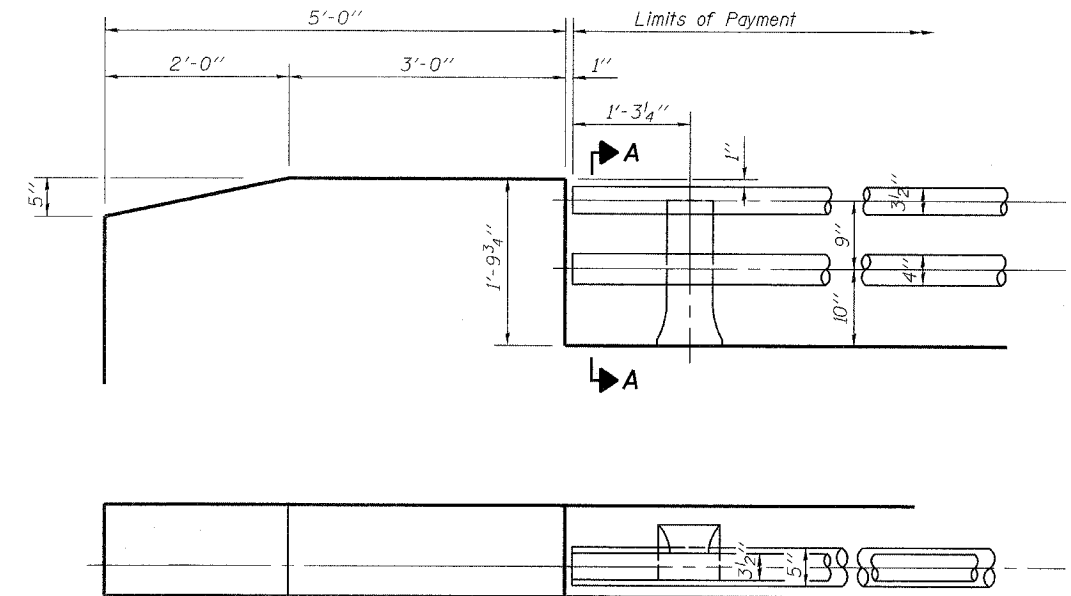


FAP RTEL	SECTION	COUNTY	TOTAL SHEETS	SHEET NO.
338	114 BY-R-1	WILL	139	77
STA.	TO STA.			
FED. ROAD DIST. NO.	ILLINOIS	FED. AID PROJECT		

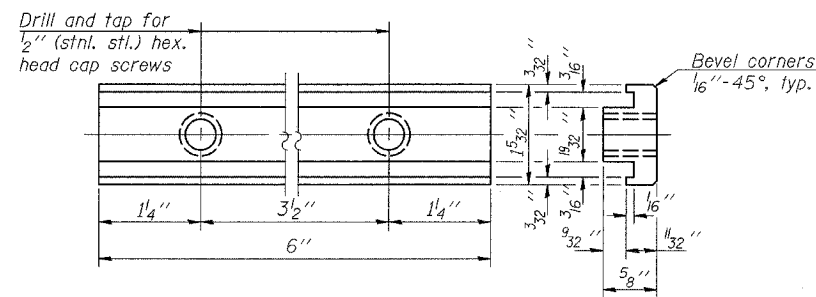
* In lieu of the cast-in-place anchor device shown, the Contractor has the option of drilling and setting stainless steel anchor rods of the same diameter and grade as the specified cap screws according to Article 509.06 of the Standard Specifications. Embedment shall be according to the manufacturer's specifications.



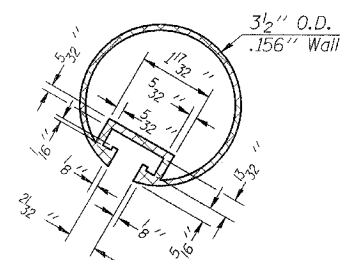
RAIL POST DETAILS



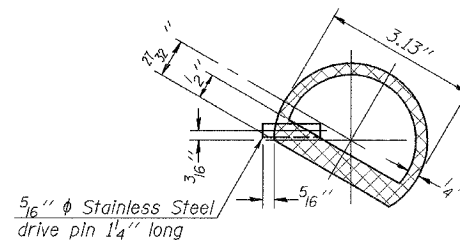
RAIL END SECTION



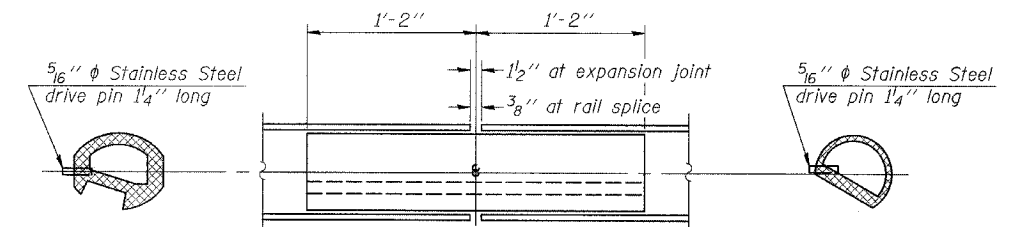
RAIL POST CLAMP BAR
For Top Rail



SECTION THRU TOP RAIL



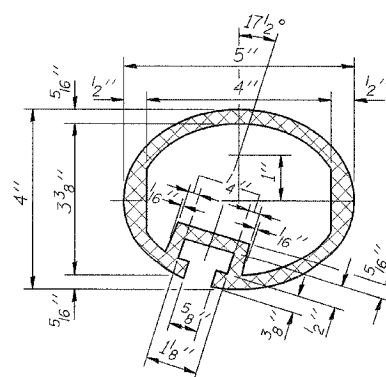
SECTION THRU SPLICE
For Top Rail



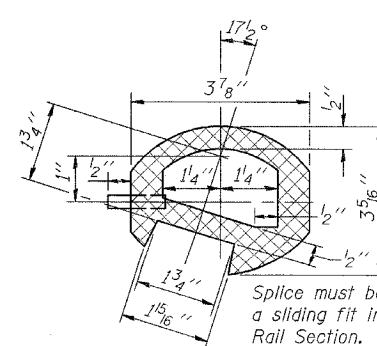
BOTTOM RAIL

RAIL SPLICE

TOP RAIL



SEC. THRU ELLIPTICAL RAIL SECTION



SEC. THRU SPLICE

Notes:

All Posts shall be normal to parapet.
All joints in rail shall be spliced per detail.
Provide 1-8" and 2-1/8" Aluminum Shims for 25% of the Posts. Rail elements shall be parallel to Grade-high spots will be ground and low spots shimmed.
See DWG. S-14 and Sheet - for rail post spacing.

BILL OF MATERIAL

Item	Unit	Quantity
Aluminum Railing, Type L	Foot	590

DWG. S-18 of 34

REVISIONS		ILLINOIS DEPARTMENT OF TRANSPORTATION BRIDGE RAILING DETAILS ILLINOIS ROUTE 59 OVER DUPAGE RIVER FAP ROUTE 338 SECTION 114 BY-R-1 WILL COUNTY STATION 3209+85.00 STRUCTURE NUMBER 099-0339
NAME	DATE	

SCALE: NONE
DATE: 08/17/07
DESIGNED BY: SB
CHECKED BY: WPM
DRAWN BY: TL
CHECKED BY: SB