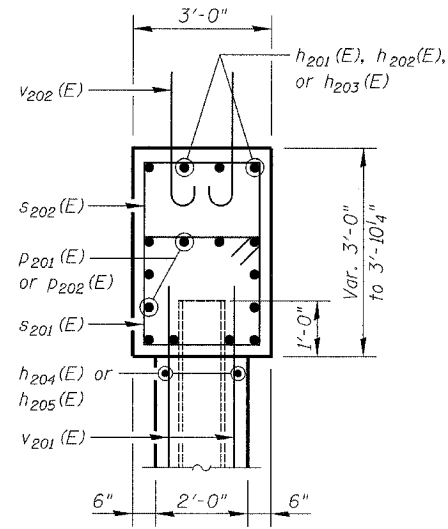
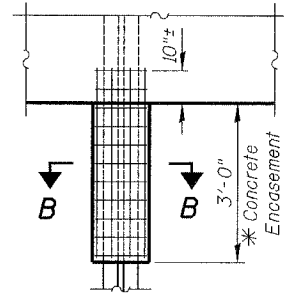


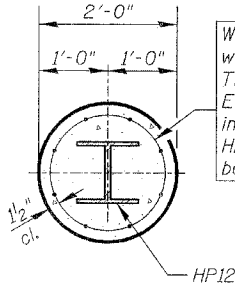
FAP RITE	SECTION	COUNTY	TOTAL SHEETS	SHEET NO.
338	114 BY-R-1	WILL	139	86
STA.		TO STA.		
FED. ROAD DIST. NO.	ILLINOIS	FED. AID PROJECT		



SECTION A-A



PILE ENCASEMENT DETAIL



SECTION B-B

Welded wire fabric 6x6-W4.0 x W4.0 weighing 58#/100 sq. ft.
The cost of Excavation, Concrete Encasement and Reinforcement is included with "Furnishing Steel Piles HP 12x74". Forms for Encasement may be omitted when soil conditions permit.

Encasement Note:

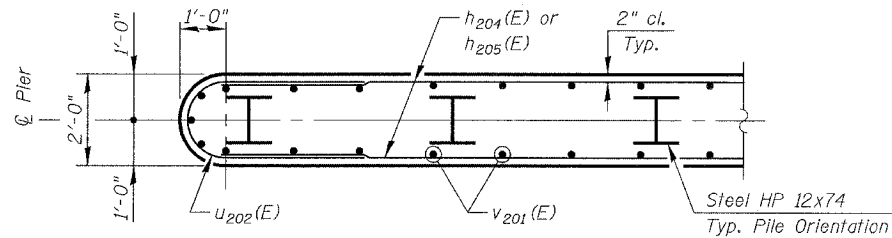
Forms shall be placed below Elev. 578.50 after excavation for pier walls. Reinforcement and concrete for encasements shall be placed underwater into forms. The cost of concrete for encasements, reinforcement, form excavation, and furnishing and placing forms is included in the cost of "Furnishing Steel Piles HP 12x74". If a portion of the pier wall is below the waterline, the concrete shall be tremied underwater into forms according to Article 503.08 of the Standard Specifications. Tremied concrete shall be placed to an elevation 12" above the water level at the time of construction. Provide protection for the underwater excavation at Piers 1 & 2. See Special Provisions for "Underwater Structure Excavation Protection".

PIER 1 BILL OF MATERIAL

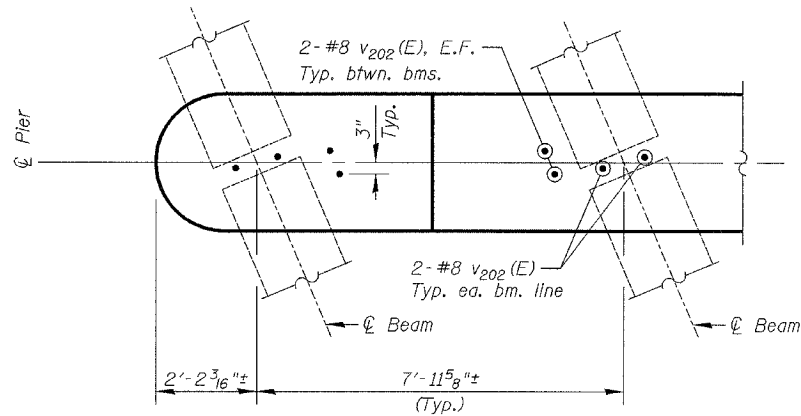
BAR	NO.	SIZE	LENGTH	SHAPE
h201(E)	4	#5	15'-8"	
h202(E)	8	#5	21'-6"	
h203(E)	4	#5	23'-0"	
h204(E)	22	#4	28'-0"	
h205(E)	44	#4	31'-6"	
p201(E)	12	#7	28'-0"	
p202(E)	24	#7	33'-0"	
s201(E)	132	#5	11'-7"	□
s202(E)	57	#4	6'-8"	□
u201(E)	9	#6	12'-2"	U
u202(E)	22	#4	8'-8"	U
v201(E)	130	#4	16'-6"	I
v202(E)	68	#8	4'-2"	I
Reinforcement Bars, Epoxy Coated			LB	8320
Concrete Structures			Cu. Yd.	149
Structure Excavation			Cu. Yd.	25
Furnishing Steel Piles HP 12x74			Foot	840
Underwater Structure Excavation Protection - Location 1			Each	1
Setting Piles in Rock			Each	20

PIER 2 BILL OF MATERIAL

BAR	NO.	SIZE	LENGTH	SHAPE
h201(E)	4	#5	15'-8"	
h202(E)	8	#5	21'-6"	
h203(E)	4	#5	23'-0"	
h204(E)	22	#4	28'-0"	
h205(E)	44	#4	31'-6"	
p201(E)	12	#7	28'-0"	
p202(E)	24	#7	33'-0"	
s201(E)	132	#5	11'-7"	□
s202(E)	57	#4	6'-8"	□
u201(E)	9	#6	12'-2"	U
u202(E)	22	#4	8'-8"	U
v201(E)	130	#4	16'-6"	I
v202(E)	68	#8	4'-2"	I
Reinforcement Bars, Epoxy Coated			LB	8320
Concrete Structures			Cu. Yd.	142
Structure Excavation			Cu. Yd.	25
Furnishing Steel Piles HP 12x74			Foot	820
Underwater Structure Excavation Protection - Location 2			Each	1
Setting Piles in Rock			Each	20

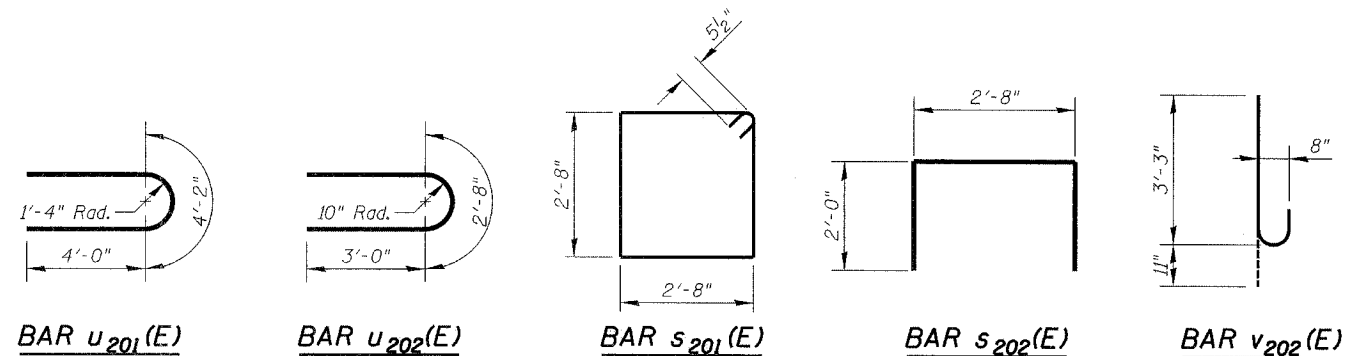


SECTION B-B



PLAN AT PIER

(Showing v202(E) bars)



Notes:

Reinforcement Bars designated (E) shall be epoxy coated.

All exposed edges shall have 3/4" chamfers except as noted.

Work this DWG. with DWG. S-26.

REVISIONS	
NAME	DATE

ILLINOIS DEPARTMENT OF TRANSPORTATION
PIER 1 & 2 DETAILS
 ILLINOIS ROUTE 59 OVER DUPAGE RIVER
 FAP ROUTE 338 SECTION 114 BY-R-1
 WILL COUNTY
 STATION 3209+85.00
 STRUCTURE NUMBER 099-0339
 SCALE: NONE DESIGNED BY: TB DRAWN BY: TL
 DATE: 08/17/07 CHECKED BY: WPM CHECKED BY: TB