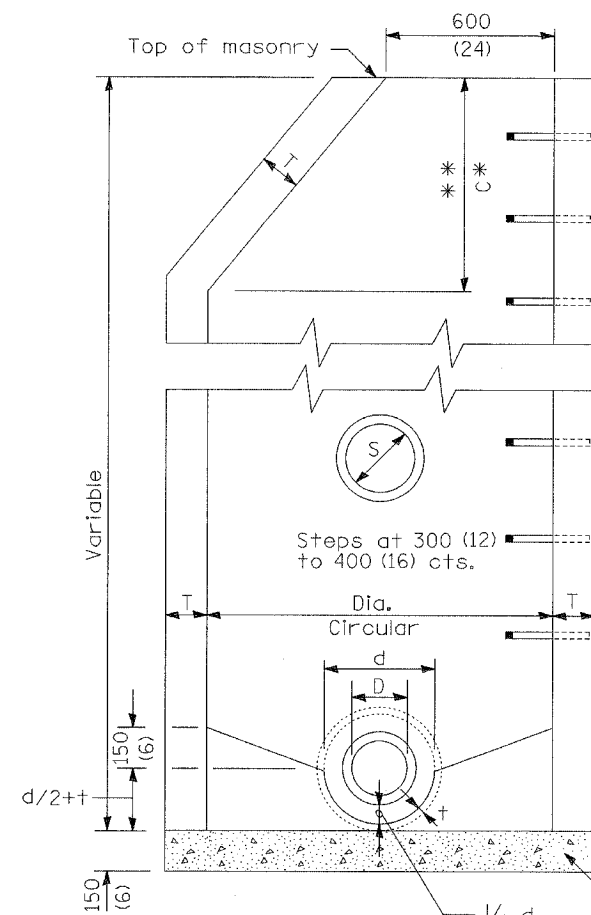
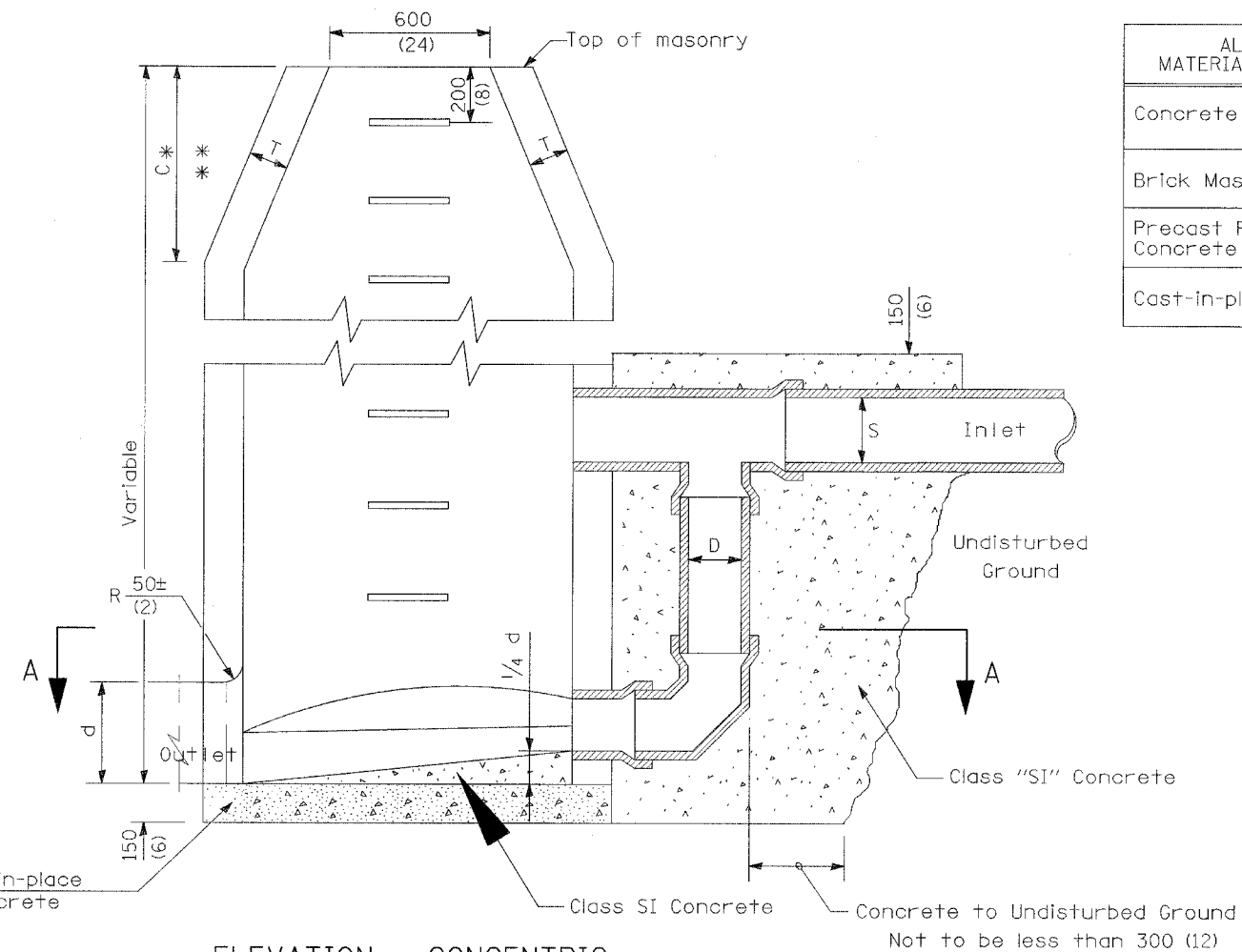


F&P RTE.	SECTION	COUNTY	TOTAL SHEETS	SHEET NO.
338	114 BY-R-1	WILL	139	101
STA.		TO STA.		
FED. ROAD DIST. NO.	ILLINOIS	FAP 338 (IL RTE. 59)		

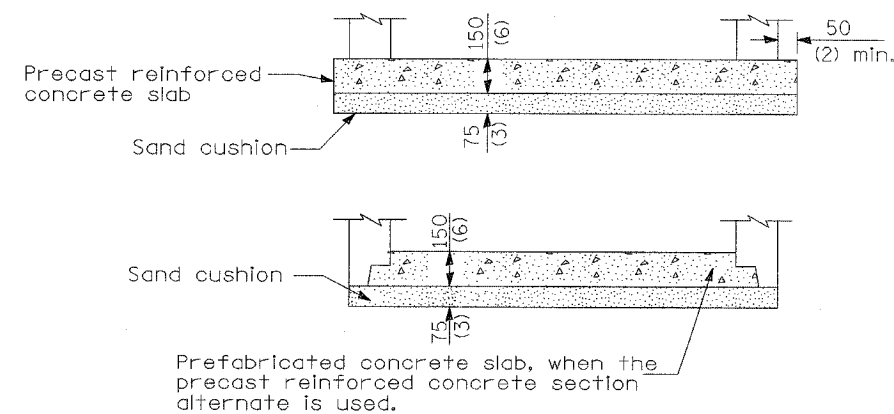


ELEVATION - ECCENTRIC

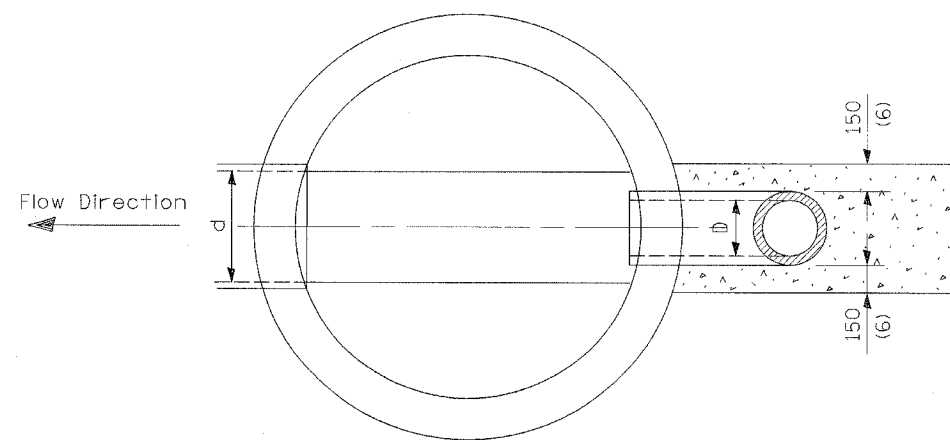


ELEVATION - CONCENTRIC

ALTERNATE MATERIALS FOR WALLS	Dia.	C	T (min.)
Concrete Masonry Unit	1.2 m (4'-0")	750 (30)	125 (5)
	1.5 m (5'-0")	1.15 m (3'-9")	125 (5)
Brick Masonry	1.2 m (4'-0")	750 (30)	200 (8)
	1.5 m (5'-0")	1.15 m (3'-9")	200 (8)
Precast Reinforced Concrete Section	1.2 m (4'-0")	750 (30)	100 (4)
	1.5 m (5'-0")	1.15 m (3'-9")	125 (5)
Cast-in-place Concrete	1.2 m (4'-0")	750 (30)	150 (6)
	1.5 m (5'-0")	1.15 m (3'-9")	150 (6)



ALTERNATE BOTTOM SLAB



PLAN SECTION A-A

GENERAL NOTES

Diameter of Riser of Manhole Drop Connection "D" to be of a diameter one standard pipe size smaller than the diameter of the sewer being connected to the Manhole "S" excepting that no riser shall be less than 200 mm (8") in diam.

See Standard 602701 for details of steps.

* Dimension "C" for Precast Reinforced Concrete Sections may vary from the dimension given to plus 150 mm (6").

** See Standard 602601 for Optional Precast Reinforced Concrete Flat Slab Top.

All dimensions are in millimeters (inches) unless otherwise shown.

ILLINOIS DEPARTMENT OF TRANSPORTATION
DISTRICT NO. 1 SCHAUMBURG

DETAILS

SCALE NONE
DATE AUGUST 17, 2007

DRAWN BY BSB
CHECKED BY JCM