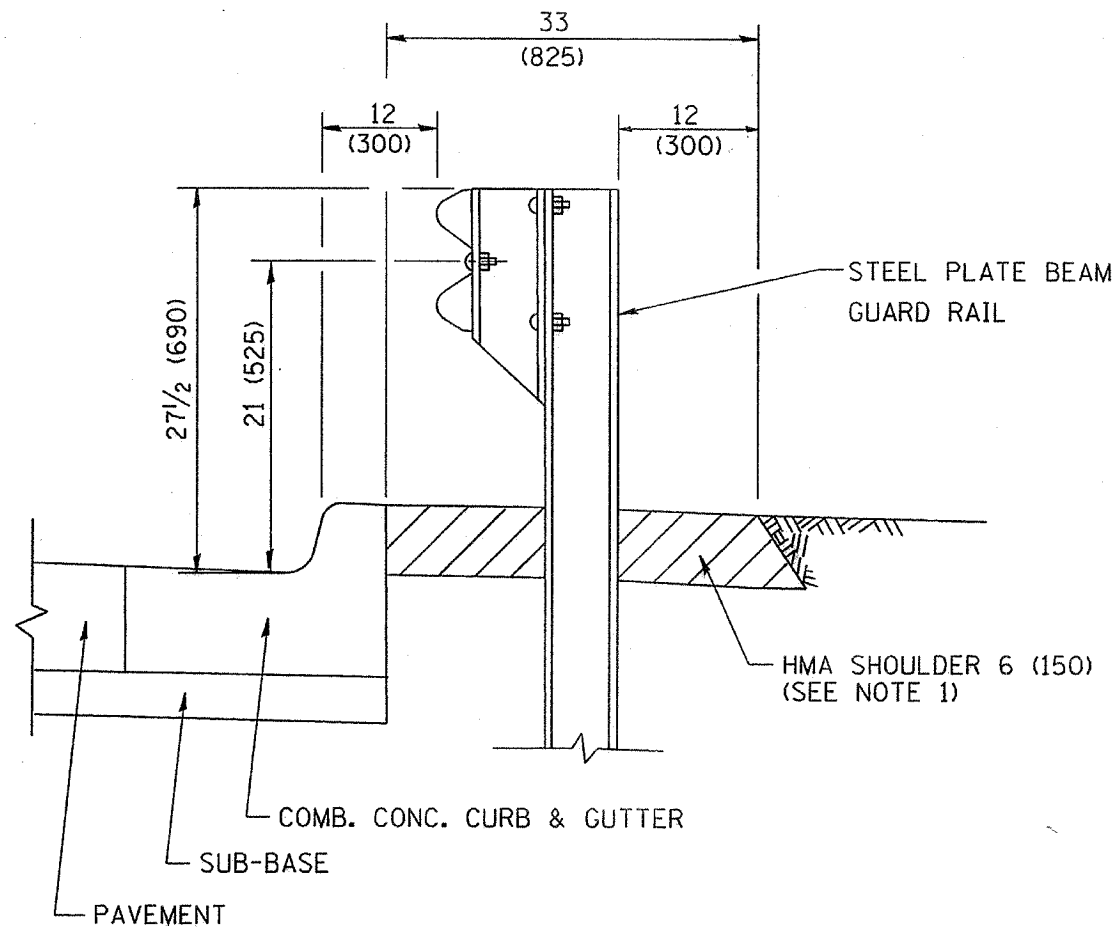


FAP R/L	SECTION	COUNTY	TOTAL SHEETS	SHEET NO
338	114 BY-R-1	WILL	139	104
STA.		TO STA.		
FED. ROAD DIST. NO.	BLM/MS	FAP 338 (IL RTE. 59)		

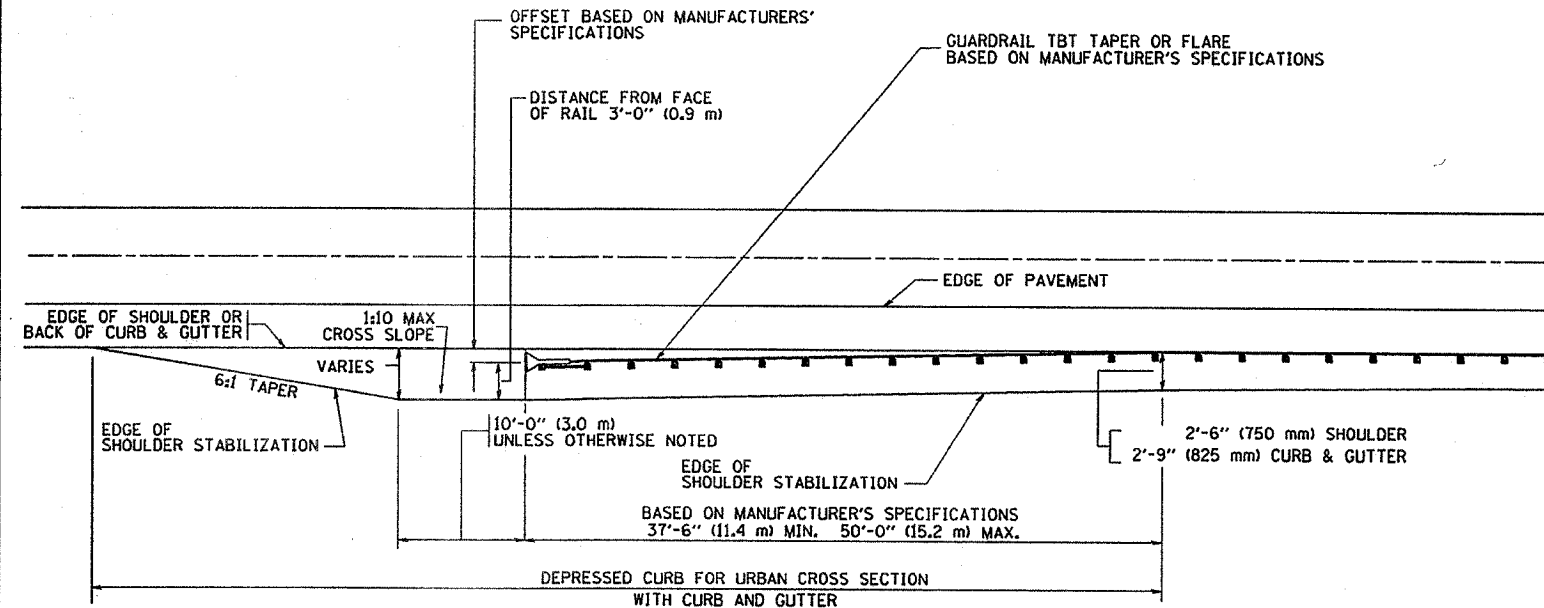


- NOTES: 1. THE HMA SHOULDER SHALL EXTEND UNDER THE TRAFFIC BARRIER TERMINAL
2. GUARD RAIL MAY BE PLACED AT THE BACK OF CURB WHEN DIRECTED BY THE ENGINEER.

BASIS OF PAYMENT: HMA SHOULDER 6 (150) WILL BE PAID FOR AT THE CONTRACT UNIT PRICE PER SQUARE YARD (SQUARE METER) FOR "HOT-MIX ASPHALT SHOULDER 6" (150 mm)".

STEEL PLATE BEAM GUARD RAIL AND TRAFFIC BARRIER TERMINAL, OF THE TYPE SPECIFIED WILL BE PAID FOR SEPARATELY.

DETAILS FOR STEEL PLATE BEAM GUARD RAIL ADJACENT TO CURB AND GUTTER
 [FOR ROADWAY SPEED 35 MPH (60 kmh) TO 45 MPH (70 kmh)]



STABILIZATION AT TBT TY. 1 SPL.

TBT = TRAFFIC BARRIER TERMINAL
 ALL DIMENSIONS ARE IN INCHES (MILLIMETERS) UNLESS OTHERWISE SHOWN.

REVISIONS	
NAME	DATE
M. DE YONG	09-22-90
M. DE YONG	07-14-92
R. SHAH	09/09/94
R. SHAH	10/25/94
R. SHAH	02/23/98
A. ABBAS	03/21/97
E. GOMEZ	08/28/00
R. BORO	01/01/07

ILLINOIS DEPARTMENT OF TRANSPORTATION
 DETAILS FOR
 STEEL PLATE BEAM GUARD RAIL
 ADJACENT TO CURB AND GUTTER
 STABILIZATION AT TBT TY 1 SPL.

SCALE: VERT. NONE
 HORIZ.

DRAWN BY Jls
 CHECKED BY

PLOT DATE: 3/6/2007
 FILE NAME: K:\data\60c19\60c19.dwg
 PLOTTER: HP DesignJet 710c
 USER NAME: bborod