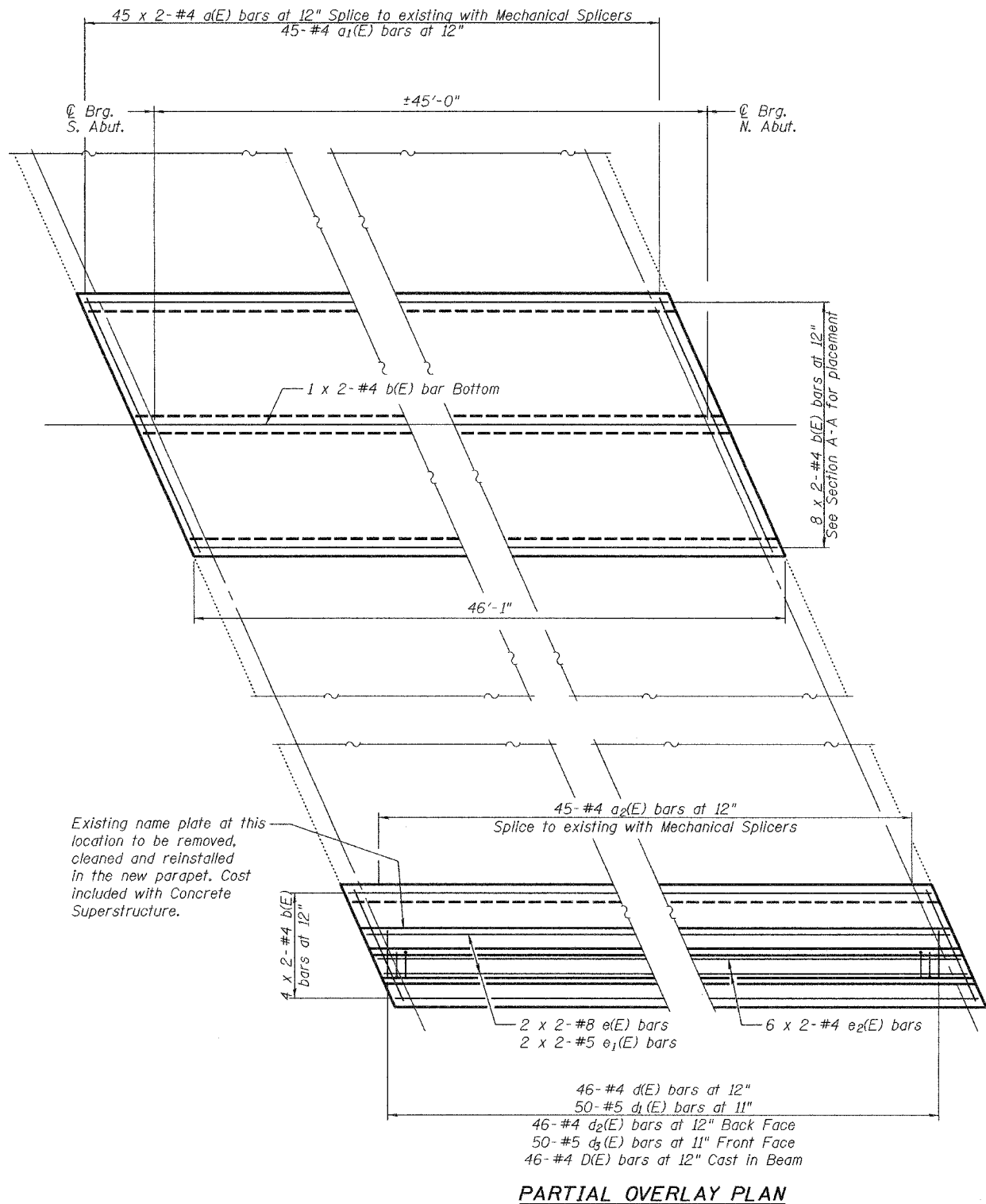


STATE OF ILLINOIS  
DEPARTMENT OF TRANSPORTATION

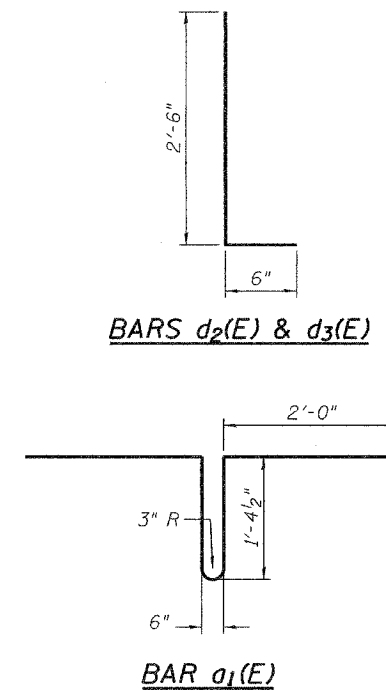
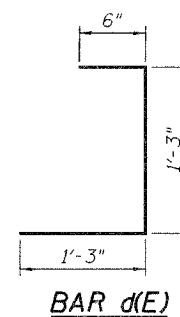
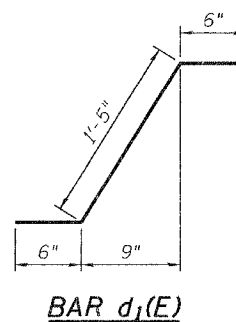
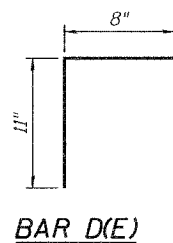
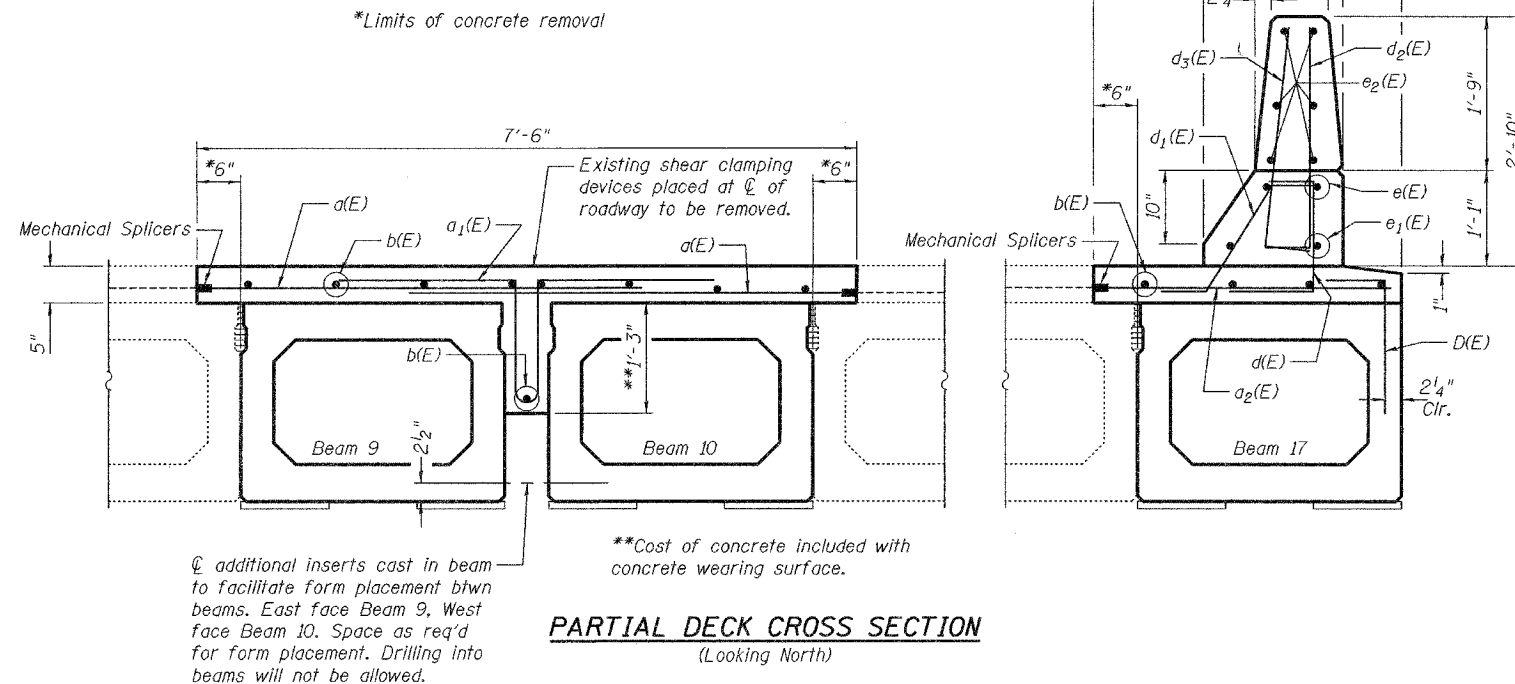
ROUTE NO.	SECTION	COUNTY	POST MILE	SHEET NO.
		Cook	11	8
FED. ROAD DIST. NO. 7		ILLINOIS	FED. AID PROJECT	

Contract Number: 60D24

SHEET NO. 3  
3 SHEETS



Notes:  
Removal cost of concrete wearing surface over PPC Deck Beams is included with removal of existing deck beams.  
The cost of removing the existing shear clamping devices shall be included with removal of existing deck beams.



**BILL OF MATERIAL**

Bar	No.	Size	Length	Shape
a(E)	90	#4	5'-0"	—
a <sub>1</sub> (E)	45	#4	7'-7"	⌋
a <sub>2</sub> (E)	45	#4	3'-6"	—
b(E)	26	#4	24'-4"	—
d(E)	46	#4	3'-0"	⌋
d <sub>1</sub> (E)	50	#5	2'-5"	⌋
d <sub>2</sub> (E)	46	#4	3'-0"	⌋
d <sub>3</sub> (E)	50	#5	3'-0"	⌋
e(E)	4	#8	25'-3"	—
e <sub>1</sub> (E)	4	#5	24'-1"	—
e <sub>2</sub> (E)	12	#4	23'-10"	—
Mechanical Splice	Each		135	
Concrete Superstructure	Cu. Yd.		5.0	
Concrete Wearing Surface, 5"	Sq. Yd.		56.3	
Reinforcement Bars, Epoxy Coated	Lbs.		2,080	
Concrete Removal	Cu. Yd.		6.1	

Bars indicated thus 1 x 2-#5 etc. indicates 1 line of bars with 2 lengths per line.

**Min Bar Laps**

- #4 = 1'-8"
- #5 = 2'-2"
- #8 = 4'-6"

**OVERLAY DETAILS**  
F.A.U. RT. 3597  
COOK COUNTY  
SN 016-0771

DESIGNED	S.J.B.
CHECKED	A.T.H.
DRAWN	Drew Christopher
CHECKED	S.J.B. A.T.H.

EXAMINED	September 17, 2007
PASSED	Carl Krueger ENGINEER OF STRUCTURAL SERVICES
	Ralph E. Anderson ENGINEER OF BRIDGES AND STRUCTURES