

F.A.U. RTE.	SECTION	COUNTY	TOTAL SHEETS	SHEET NO.
3597	0710I-1	COOK	11	1

STATE OF ILLINOIS
DEPARTMENT OF TRANSPORTATION
DIVISION OF HIGHWAYS

**PROPOSED
HIGHWAY PLANS**

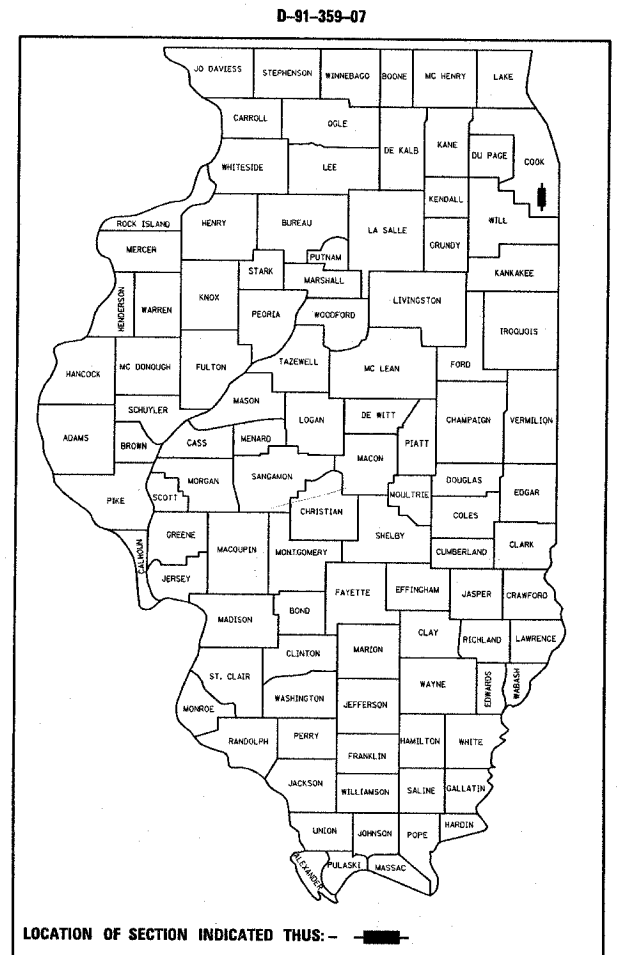
**FAU ROUTE 3597: PARK AVE.
OVER CAL UNION DITCH
SECTION: 0710I-1
PPC DECK BEAM REPLACEMENT
COOK COUNTY
C-91-359-07**

FOR INDEX OF SHEETS, SEE SHEET NO. 2

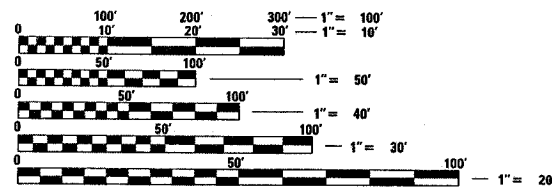
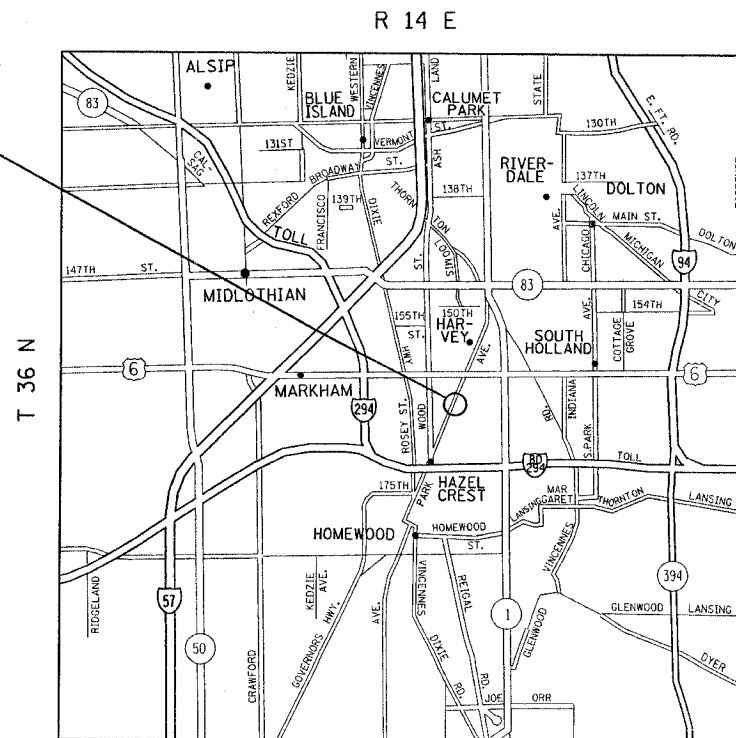
IMPROVEMENT IS LOCATED IN THE VILLAGES OF MARKHAM, HAZEL CREST & HARVEY

TRAFFIC DATA

(PARK AVE.)
SPEED LIMIT= 40 MPH
2006 ADT = 8400



IMPROVEMENT LOCATION:
SN 016-0771



FULL SIZE PLANS HAVE BEEN PREPARED USING STANDARD ENGINEERING SCALES. REDUCED SIZED PLANS WILL NOT CONFORM TO STANDARD SCALES. IN MAKING MEASUREMENTS ON REDUCED PLANS, THE ABOVE SCALES MAY BE USED.

J.U.L.I.E.
JOINT UTILITY LOCATION INFORMATION FOR EXCAVATION
1-800-892-0123

CONTRACT NO. 60D24

DISTRICT ONE DESIGN PLAN PREPARATION ENGINEER:
KEN ENG/ROBERT BORO (847)705-4178

STATE OF ILLINOIS
DEPARTMENT OF TRANSPORTATION
DIVISION OF HIGHWAYS

SUBMITTED Sept. 6 2007

Diane O'Keefe
DEPUTY DIRECTOR OF HIGHWAYS, REGION ENGINEER

October 12, 2007
Eric E. Hamm
INTERIM ENGINEER OF DESIGN AND ENVIRONMENT

October 12, 2007
Milton R. Seos, P.E.
DIRECTOR OF HIGHWAYS, CHIEF ENGINEER

PRINTED BY THE AUTHORITY
OF THE STATE OF ILLINOIS

F.A.U. RTE.	SECTION	COUNTY	TOTAL SHEETS	SHEET NO.
3597	07/01-1	COOK	11	2
STA.		TO STA.		
FED. ROAD DIST. NO.		ILLINOIS FED. AID PROJECT		

INDEX OF SHEETS

1. COVER PAGE
2. INDEX OF SHEETS, GENERAL NOTES, STATE STANDARDS
3. SUMMARY OF QUANTITIES
- 4.-5. STAGING PLANS
- 6.-8. BRIDGE PLANS (SN 049-0131)
9. US 41 DETOUR PLAN
10. TYPICAL APPLICATION RAISED REFLECTIVE PAVEMENT MARKERS (SNOW-PLOW RESISTANT)
11. TRAFFIC CONTROL AND PROTECTION FOR SIDE ROADS, INTERSECTIONS AND DRIVEWAYS

LIST OF STATE STANDARDS

- 701301-02 LANE CLOSURE, 2L, 2W, SHORT TIME OPERATIONS
 701606-04 URBAN LANE CLOSURE, MULTILANE, 2W WITH MOUNTABLE MEDIAN
 702001-06 TRAFFIC CONTROL DEVICES
 704001-03 TEMPORARY CONCRETE BARRIER
 631031-04 TRAFFIC BARRIER TERMINAL, TYPE 6

GENERAL NOTES

BEFORE STARTING ANY EXCAVATION, THE CONTRACTOR SHALL CALL "J.U.L.I.E" AT (800) 892-0123 FOR FIELD LOCATIONS OF BURIED ELECTRIC, TELEPHONE AND GAS UTILITIES. 48 HOUR NOTIFICATION IS REQUIRED.

THE CONTRACTOR WILL NOT BE ALLOWED TO SET UP A YARD OR FIELD OFFICE ON STATE PROPERTY WITHOUT WRITTEN PERMISSION FROM THE DEPARTMENT.

ALL DAMAGE TO EXISTING PAVEMENT MARKINGS OR RAISED REFLECTIVE PAVEMENT MARKERS OUTSIDE THE REMOVAL LINE SHOWN ON THE PLANS SHALL BE REPLACED AT THE CONTRACTOR'S EXPENSE.

BEFORE BEGINNING ANY WORK, THE CONTRACTOR SHALL RETAIN AND RECORD FOR FUTURE REFERENCE, ALL EXISTING PAVEMENT MARKING LINES AND RAISED REFLECTIVE PAVEMENT MARKERS IN ORDER THAT THESE LOCATIONS CAN BE RE-ESTABLISHED FOR STRIPING. EXACT LOCATIONS OF ALL PAVEMENT MARKINGS SHALL BE AS DIRECTED BY THE ENGINEER.

IT SHALL BE THE CONTRACTORS RESPONSIBILITY TO VERIFY ALL DIMENSIONS AND CONDITIONS EXISTING IN THE FIELD PRIOR TO CONSTRUCTION AND ORDERING OF MATERIALS.

THE CONTRATOR SHALL CONTACT THE DISTRICT ONE TRAFFIC CONTROL SUPERVISOR AT (847) 705-4470 A MINIMUM OF 72 HOURS IN ADVANCE OF BEGINNING WORK.

THE CONTRACTOR SHALL CONTACT PATRICE HARRIS AT (708) 597-9800 TWO (2) WEEKS PRIOR TO PLACEMENT OF PERMANENT PAVEMENT MARKINGS.

THESE PLANS HAVE BEEN PREPARED FROM NOTES RECIEVED FROM BRIDGE INSPECTORS

THE CONTRACTOR SHALL BE REQUIRED TO PROVIDE ACCESS TO ABUTTING PROPERTY AT ALL TIMES DURING THE CONSTRUCTION OF THIS PROJECT.

DO NOT SCALE PLANS FOR CONSTRUCTION DIMENSIONS.

DOUBLE LANE MARKERS ARE TO BE USED AS SHOWN ON THE DISTRICT ONE DETAIL FOR TYPICAL APPLICATION OF RAISED REFLECTIVE PAVEMENT MARKERS (SNOW-PLOW RESISTANT) SHOWN IN THE PLANS.

CONCRETE SUPERSTRUCTURES SHALL HAVE A SEVEN DAY MINIMUM CURE.

THE CONTRATOR SHALL COORDINATE CONSTRUCTION ACTIVITIES WITH UTILITY COMPANIES.

THE CONTRATOR SHALL BE RESPONSIBLE FOR THE NOTIFICATION OF ALL EMERGENCY SERVICES, SCHOOL DISTRICTS, I.D.O.T.'S COMMUNICATIONS CENTER, SPRINGFIELD TRUCK PERMIT SECTION AND OTHER AGENCIES AFFECTED BY THE CLOSURE. THE CONTRACTOR SHALL ALSO BE RESPONSIBLE FOR POSTING SIGNS THAT WILL INDICATE THE DATES THE CLOSURE WILL BE IN PLACE.

THE CONTRACTOR SHALL CONTACT DISTRICT ONE TRAFFIC AT (847) 705-4424 ONE WEEK PRIOR TO IMPLEMENTING THE DETOUR SO TRAFFIC SIGNAL TIMINGS CAN BE ADJUSTED.

REVISIONS		ILLINOIS DEPARTMENT OF TRANSPORTATION
NAME	DATE	
		INDEX OF SHEETS GENERAL NOTES AND STATE STANDARDS PARK AVE. SCALE: VERT. DRAWN BY DATE HORIZ. CHECKED BY

F.A. RTE. 3597	SECTION 0710I-1	COUNTY COOK	TOTAL SHEETS 11	SHEET NO. 3
FED. ROAD DIST. NO. 1		ILLINOIS	HIGHWAY PROJECT	
CONTRACT 60D24				

SUMMARY OF QUANTITIES				CONSTRUCTION TYPE CODE					SUMMARY OF QUANTITIES				CONSTRUCTION TYPE CODE							
CODE NO	ITEM	UNIT	TOTAL QUANTITIES	URBAN 100% STATE SFTY-2A						CODE NO	ITEM	UNIT	TOTAL QUANTITIES							
50102400	CONCRETE REMOVAL	CU YD	6.1	6.1																
50300255	CONCRETE SUPERSTRUCTURE	CU YD	5	5																
50300260	BRIDGE DECK GROOVING	SQ YD	38.4	38.4																
50300300	PROTECTIVE COAT	SQ YD	81.6	81.6																
50400505	PRECAST PRESTRESSED CONCRETE DECK BEAMS (27" DEPTH)	SQ FT	414.8	414.8																
50500405	FURNISHING AND ERECTING STRUCTURAL STEEL	POUND	320	320																
50800205	REINFORCEMENT BARS, EPOXY COATED	POUND	2080	2080																
67000400	ENGINEER'S FIELD OFFICE, TYPE A	CAL MO	2	2																
67100100	MOBILIZATION	L SUM	1	1																
70102550	TRAFFIC CONTROL AND PROTECTION FOR TEMPORARY DETOUR	EACH	1	1																
70101800	TRAFFIC CONTROL AND PROTECTION (SPECIAL)	L SUM	1	1																
70400100	TEMPORARY CONCRETE BARRIER	FOOT	150	150																
* 78008210	POLYUREA PAVEMENT MARKING TYPE I - LINE 4"	FOOT	150	150																
X0301424	SILICONE JOINT SEALER	FOOT	24	24																
X0320047	REMOVAL OF EXISTING PRECAST PRESTRESSED CONCRETE DECK BEAMS	SQ FT	414.8	414.8																
X0321781	MECHANICAL SPLICE	EACH	135	135																
X0322467	TEMPORARY INFORMATION SIGNING FOR LANE CLOSURE	SQ FT	48	48																
X5030305	CONCRETE WEARING SURFACE, 5"	SQ YD	56.3	56.3																
Z0030240	IMPACT ATTENUATORS, TEMPORARY (NON- REDIRECTIVE), TEST LEVEL 2	EACH	1	1																

* SPECIALTY ITEMS

REVISIONS	
NAME	DATE

ILLINOIS DEPARTMENT OF TRANSPORTATION
SUMMARY OF QUANTITIES

PLOT DATE: 9/5/2007

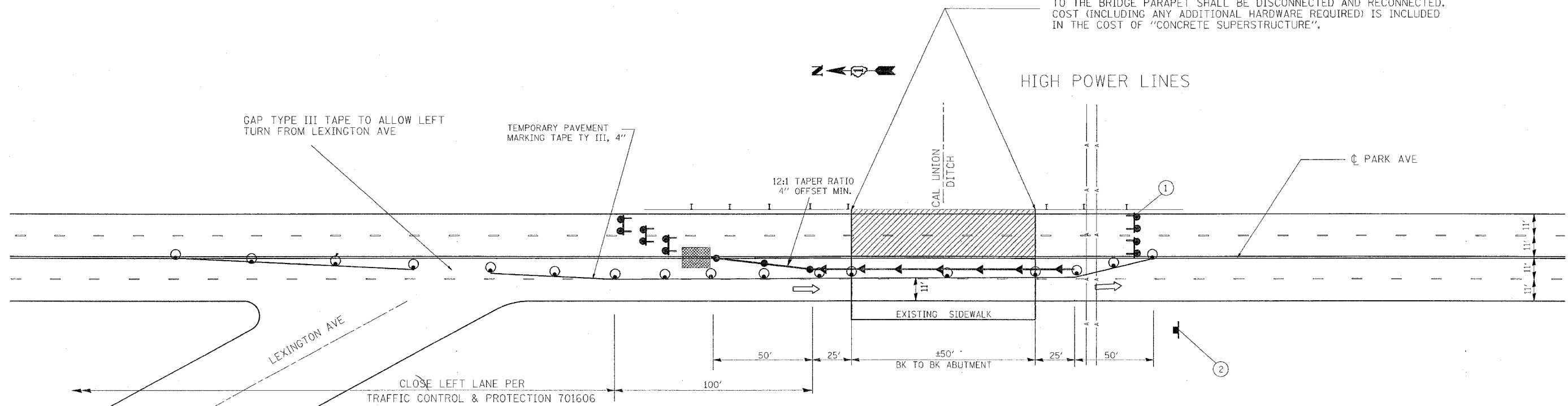
Rev.

9/5/2007 11:20:00 AM

I:\Projects\60D24\60D24.dwg 9/5/2007 11:20:00 AM

F.A.U. RTE.	SECTION	COUNTY	TOTAL SHEETS	SHEET NO.
3597	07101-1	COOK	11	4
STA.		TO STA.		
FED. ROAD DIST. NO.	ILLINOIS	FED. AID PROJECT		

EXISTING TYPE 6 TERMINAL GUARDRAIL CONNECTIONS (SEE STD 631031) TO THE BRIDGE PARAPET SHALL BE DISCONNECTED AND RECONNECTED. COST (INCLUDING ANY ADDITIONAL HARDWARE REQUIRED) IS INCLUDED IN THE COST OF "CONCRETE SUPERSTRUCTURE".



LEXINGTON AVE

LEXINGTON AVE

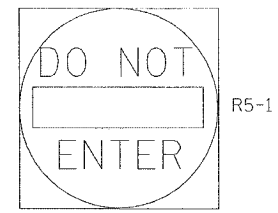
CLOSE LEFT LANE PER TRAFFIC CONTROL & PROTECTION 701606

HIGH POWER LINES

PARK AVE



- SIGN
- TYPE II BARRICADE, DRUM OR VERTICAL BARRICADE WITH STEADY BURNING MONODIRECTIONAL LIGHT @ 25' CTS
- TYPE III BARRICADE WITH 2 STEADY BURNING LIGHTS
- WORK ZONE
- IMPACT ATTENUATORS
- TEMP. CONCRETE BARRIER WITH TYPE C MONODIRECTIONAL REFLECTOR ON TANGENT PORTION AT BARRIER AT 50' CENTERS (SEE DETAIL A)
- TEMP. CONCRETE BARRIER WITH VERTICAL PANELS AT 25' CENTERS WITH STEADY BURN MONODIRECTIONAL LIGHT
- DIRECTION OF TRAFFIC



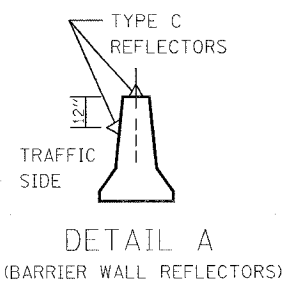
M3-1 2412

R11-2 4830

2

1

MOUNTED ON TYPE III BARRICADE



NOTES: TYPE III TAPE & ITS REMOVAL, LANE CLOSURE AND ADDITIONAL TRAFFIC CONTROL ITEMS SHOWN ON THESE SHEETS ARE INCLUDED IN THE COST OF "TRAFFIC CONTROL & PROTECTION (SPECIAL)".

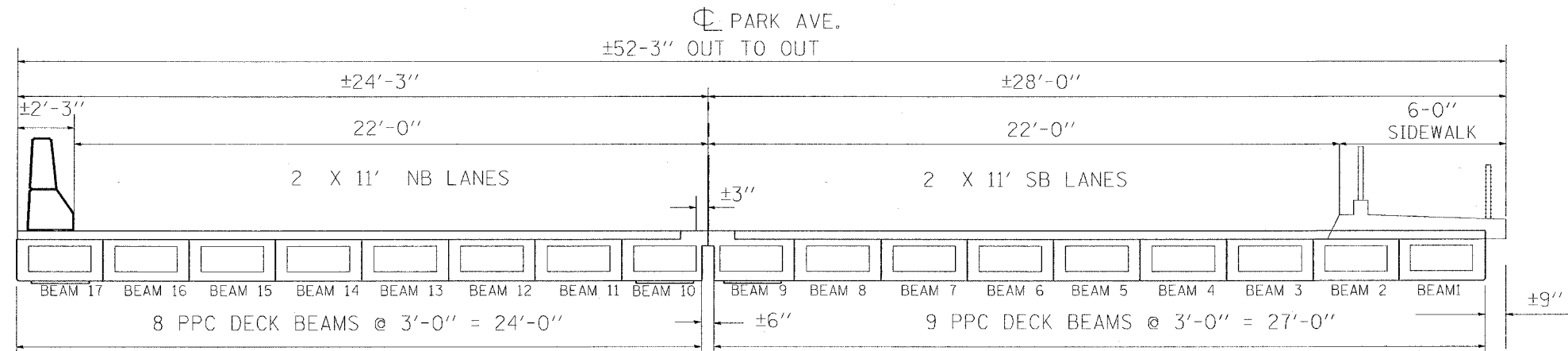
REVISIONS	
NAME	DATE

ILLINOIS DEPARTMENT OF TRANSPORTATION

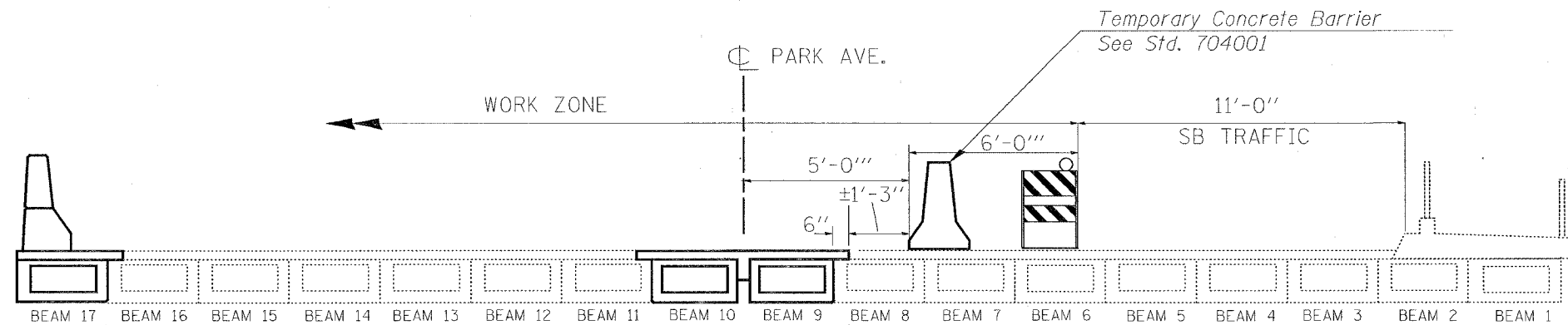
TRAFFIC CONTROL PLAN
SN 016-0771

SCALE: VERT. DRAWN BY
HORIZ. CHECKED BY
DATE

F.A.U. RTE.	SECTION	COUNTY	TOTAL SHEETS	SHEET NO.
3597	07101-1	COOK	11	5
STA.		TO STA.		
FED. ROAD DIST. NO.	ILLINOIS	FED. AID PROJECT		



EXISTING DECK CROSS-SECTION
(LOOKING SOUTH)



TRAFFIC STAGING
(LOOKING SOUTH)

ROAD IS CLOSED TO NB TRAFFIC DURING CONSTRUCTION.
NB TRAFFIC IS DETOURED. SEE DETOUR.

PLOT DATE = 9/17/2007
FILE NAME = c:\proje\3597\07101\design_leadgn
PLOT SCALE = 5/8"=1'-0" / IN.
USER NAME = mitchellr

REVISIONS	
NAME	DATE

ILLINOIS DEPARTMENT OF TRANSPORTATION

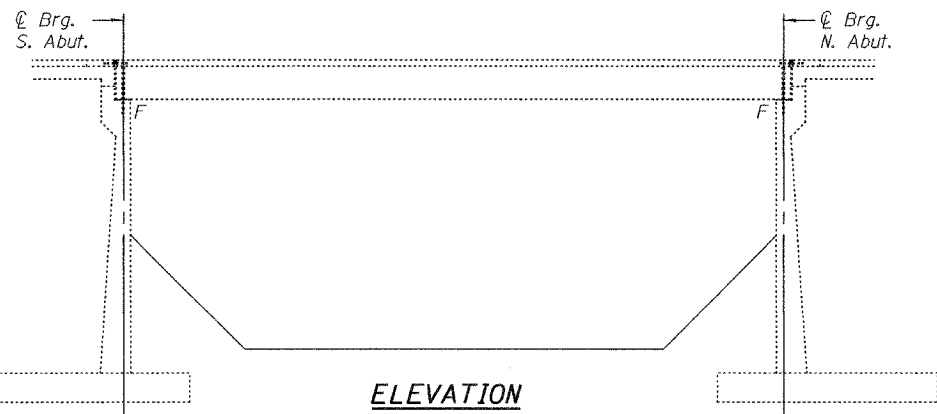
TRAFFIC STAGING
PARK AVE.
SN 016-0771

SCALE: VERT. DRAWN BY
 HORIZ. CHECKED BY
DATE

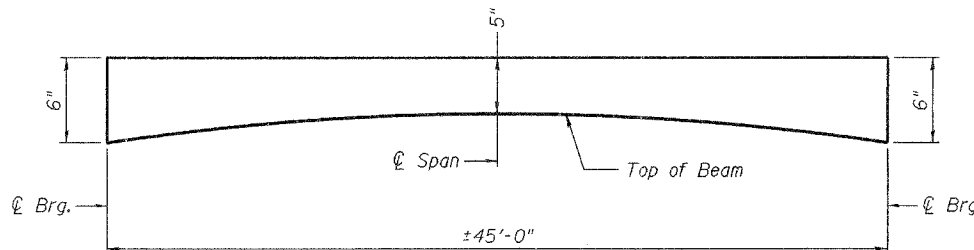
STATE OF ILLINOIS
DEPARTMENT OF TRANSPORTATION

ROUTE NO.	SECTION	COUNTY	SHEETS	SHEET NO.
		Cook	11	6
FED. ROAD DIST. NO. 7		ILLINOIS		FED. AID PROJECT-

Contract Number: 60D24



ELEVATION



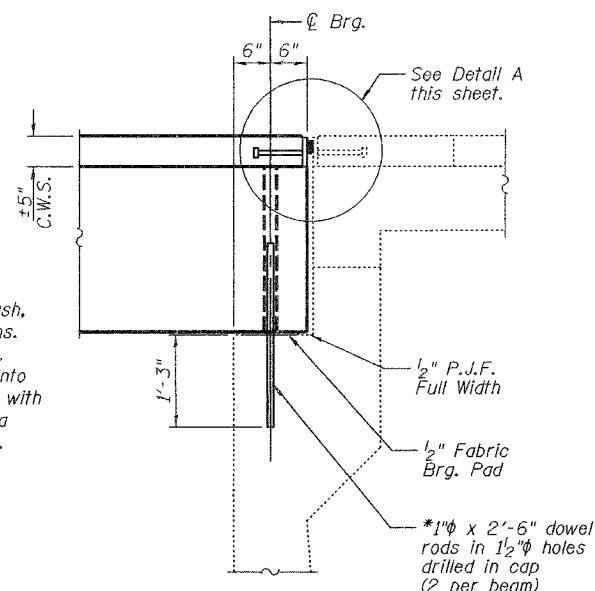
CONCRETE WEARING SURFACE PROFILE

DESIGN STRESSES

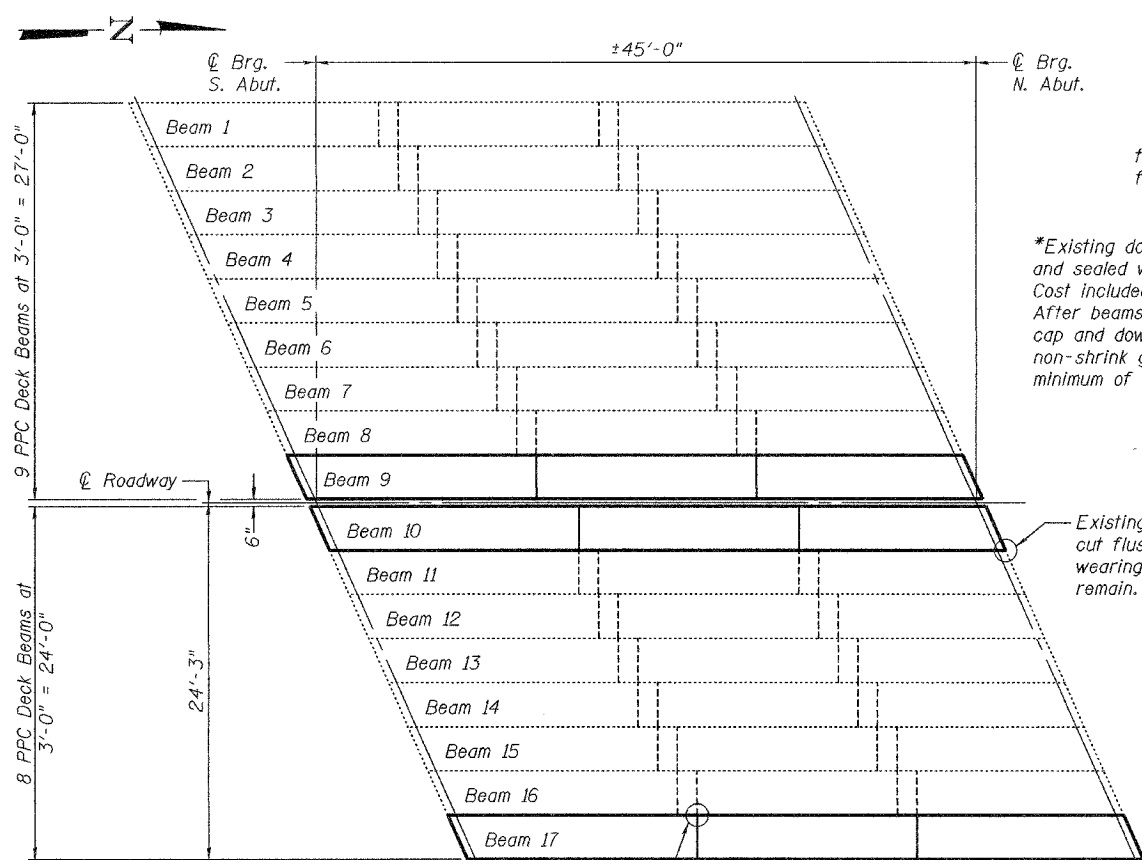
FIELD UNITS
 $f'_c = 3,500$ psi
 $f_y = 60,000$ psi (Reinforcement)

PRECAST PRESTRESSED UNITS
 $f'_c = 5,000$ psi
 $f'_{ci} = 4,000$ psi
 $f'_s = 270,000$ psi ($\frac{1}{2}$ " ϕ low lax strands)
 $f'_{si} = 201,960$ psi ($\frac{1}{2}$ " ϕ low lax strands)

*Existing dowel rods are to be burned off, ground flush, and sealed with epoxy prior to placement of new beams. Cost included in Removal of Existing PPC Deck Beams. After beams have been erected holes shall be drilled into cap and dowel rods placed. Dowel holes shall be filled with non-shrink grout to top of beam and allowed to cure a minimum of 24 hours prior to grouting the shear keys.

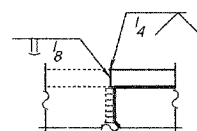


TYPICAL ABUTMENT SECTION

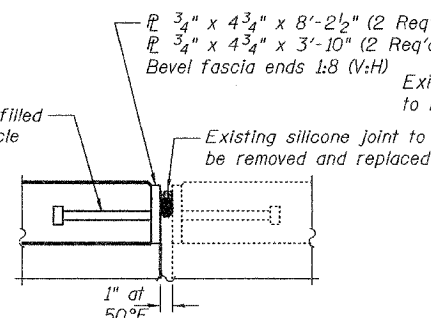


PLAN

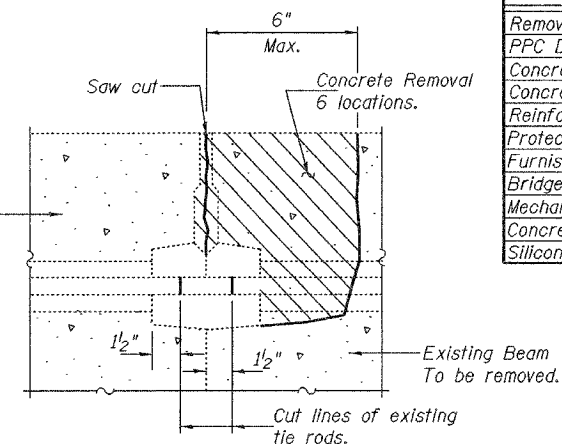
ELEVATION NEW JOINT \mathcal{R}
TO EXISTING JOINT \mathcal{R}



$\frac{3}{4}$ " ϕ x 8" granular or solid flux filled headed studs conforming to Article 1006.32 of the Std. Spec's automatically end welded at 12" ctrs. (8 req'd for 8'-2 1/2" \mathcal{R} 4 req'd for 3'-10" \mathcal{R})



DETAIL A
TYPICAL JOINT SECTION



BEAM REMOVAL DETAIL
AT TRANSVERSE TIES

TOTAL BILL OF MATERIAL

ITEM	UNIT	QUANTITY
Removal of Existing PPC Deck Beams	Sq. Ft.	414.8
PPC Deck Beams (27" Depth)	Sq. Ft.	414.8
Concrete Wearing Surface 5"	Sq. Yd.	56.3
Concrete Superstructure	Cu. Yd.	5.0
Reinforcement Bars Epoxy Coated	Pound	2,080
Protective Coat	Sq. Yd.	81.6
Furnishing and Erecting Structural Steel	Pound	320
Bridge Deck Grooving	Sq. Yd.	38.4
Mechanical Splice	Each	135
Concrete Removal	Cu. Yd.	6.1
Silicone Joint Sealer	Foot	24

GENERAL NOTES

The contractor is advised that the existing PPC Deck Beams are in a deteriorated condition with reduced load carrying capacity. It is the contractor's responsibility to account for the condition of the beams when developing construction procedures.

If the contractor's procedure for existing beam removal or placement of new beams involves placement of cranes or other heavy equipment on the bridge, a detailed procedure shall be submitted to the Engineer for approval. The procedure shall include calculations, prepared and sealed by an Illinois Licensed Structural Engineer, verifying that the equipment and procedure used will not overstress the new or existing beams. To distribute load to multiple beams and protect the existing surface, in all cases a double layer mat of heavy timbers shall be used at all times under crane tracks or wheels and any outriggers in the down position. If necessary, shims shall be used under the crane mat to ensure uniform contact with the underlying beams. If heavy equipment will be placed on new PPC deck beams, the following shall be done prior to placement of the timber mats: placement and tightening of transverse tie assemblies, grouting and curing the dowel rods 24 hours minimum and grouting and curing the shear keys.

The minimum thickness of the Concrete overlay shall be 5" and varies as required to adjust for the new profile grade and beam camber.

Any damage done to the bridge during beam removal shall be repaired by the Contractor. Cost to be included in the cost of Removal of Existing PPC Deck Beams.

The top surface of the beams shall be finished according to the IDOT Manual for Fabrication of Precast Prestressed Concrete Products.

Existing reinforcement bars extending into the removal area shall be cleaned, straightened and incorporated into the new construction. Any reinforcement bars that are damaged during concrete removal shall be replaced with an approved bar splicer or anchorage system. Cost included with Concrete Removal.

Plan dimensions and details relative to existing plans are subject to routine variations. The Contractor shall field verify existing dimensions and details affecting new construction and make necessary approved adjustments prior to construction or ordering of materials. Such variations shall not be cause for additional compensation for a change in scope of the work, however, the Contractor will be paid for the quantity actually furnished based upon the unit price bid for the work.

Reinforcement bars shall conform to the requirements of ASTM A 706 Gr 60 (IL Modified). See Special Provisions.

Reinforcement bars designated (E) shall be epoxy coated.

All structural steel shall conform to AASHTO Classification M-270 Gr. 36, unless otherwise noted.

Temporary concrete barrier shall only be anchored into the overlay and not into the PPC Deck Beams.

PLAN AND ELEVATION
F.A.U. RT. 3597
COOK COUNTY
SN 016-0771

DESIGNED	[Signature]
CHECKED	Alexis Holloway
DRAWN	[Signature]
CHECKED	SJB

EXAMINED	[Signature]	September 17, 2007
PASSED	[Signature]	



Expires: November 30, 2008

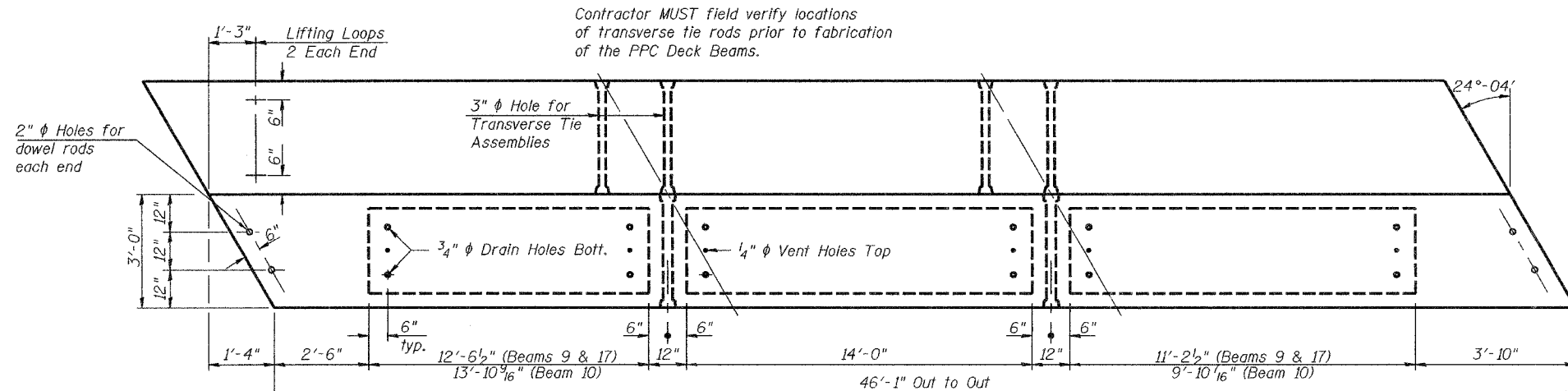
STATE OF ILLINOIS
DEPARTMENT OF TRANSPORTATION

ROUTE NO.	SECTION	COUNTY	TOTAL SHEETS	SHEET NO.
		Cook	11	7
FED. ROAD DIST. NO. 7	ILLINOIS	FED. AID PROJECT		

SHEET NO. 2
3 SHEETS

**0.2 x Length of beam

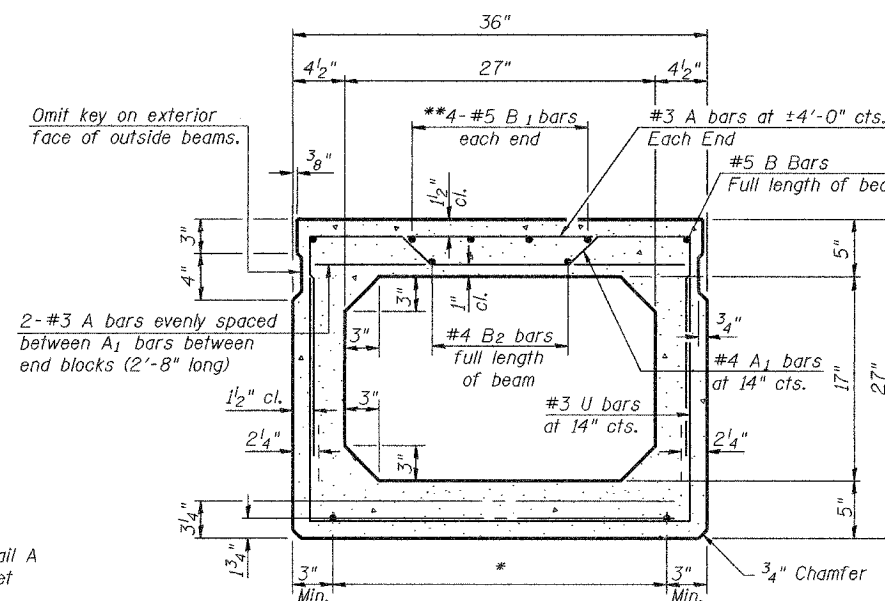
Contract Number: 60D24



Contractor MUST field verify locations of transverse tie rods prior to fabrication of the PPC Deck Beams.

PLAN

6" x 6" x 14" Blockout to be filled with Class BS Concrete after Beams have been installed and keyways are grouted and cured. Cost shall be included in the cost of Concrete Wearing Surface 5". Omit on outside of Fascia Beams and face adjacent to ϕ for Beams 9 and 10.



TYPICAL SECTION

$\frac{1}{2}$ " ϕ Strands, Each Strand Stressed to 30,900 Lbs.
7-Strands $1\frac{3}{4}$ " up, 4-Strands $3\frac{1}{4}$ " up, 2-Strands $4\frac{1}{2}$ " up

* TRANSVERSE PLACEMENT GUIDELINES

1. Place strands symmetrically about centerline of beam.
2. The minimum distance from center to center of strands in all directions shall be 2".
3. The minimum clearance from strand to dowel hole shall be $\frac{1}{2}$ ".
4. The minimum clearance from strand to void shall be $\frac{1}{2}$ ".

Vertical placement of strands shall not be adjusted to satisfy the above guidelines.

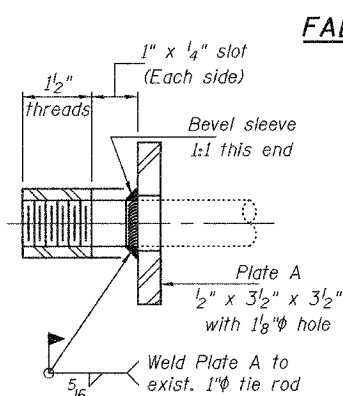
NOTES

Prestressing steel shall be uncoated high strength, low relaxation 7-wire strand, Grade 270. The nominal diameter shall be $\frac{1}{2}$ " and the nominal cross-sectional area shall be 0.153 sq. in. Lifting loops shall be 2 - $\frac{1}{2}$ " ϕ - 270 ksi strands, as shown. The 1" ϕ rods in the transverse tie assembly shall be tightened to a snug fit and the threads set. Pockets that receive transverse tie bar on outside shall be filled with grout after transverse tie assembly is in place. Non prestressing steel shall conform to ASTM A 706 (IL MOD), Grade 60. The bearing seat surfaces shall be adjusted by shimming to assure firm and even bearing. Two 9" x 9" x $\frac{1}{8}$ " fabric adjusting shims shall be provided for each bearing. Keyway surfaces shall be cleaned to remove form oil or other bond breaking material prior to shipment of the beams. Cleaning shall be done by sandblasting the keyway areas between top of the beam and the bottom edge of the key. Corrosion Inhibitor, per Article 1020.05(b)(12) of the Standard Specifications, shall be used in the concrete for precast prestressed concrete deck beams. Required Release Strength, f'ci, shall be 4,000 p.s.i.

BILL OF MATERIAL

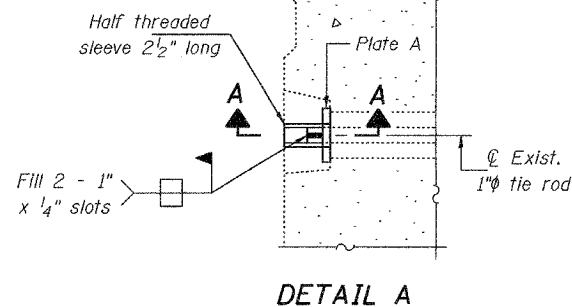
Precast Prestressed Conc. Deck Bms. (27" Depth)	Sq. Ft.	414.8
---	---------	-------

BEAM DETAILS
F.A.U. RT. 3597
COOK COUNTY
SN 016-0771

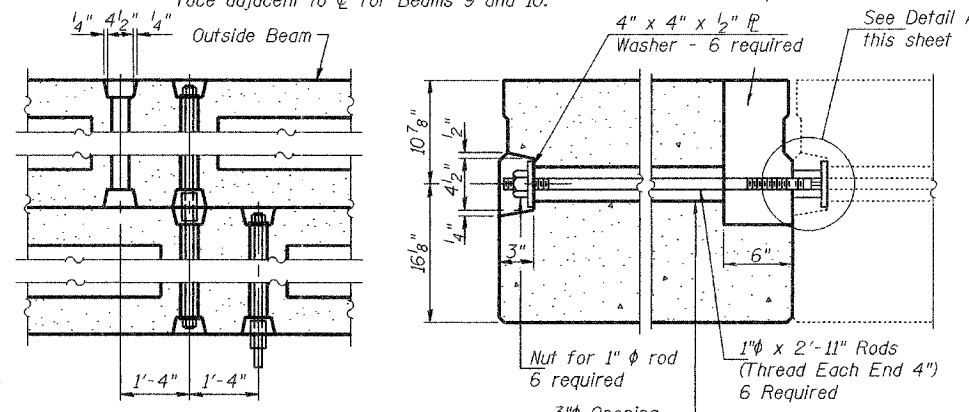


SECTION A-A
(6 Required)

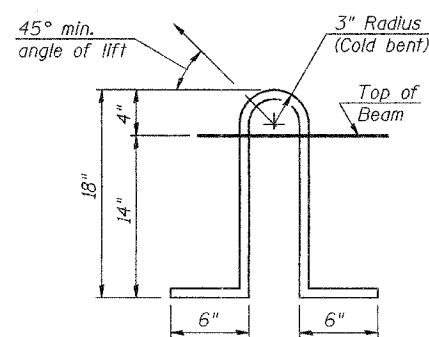
FABRIC BEARING PAD



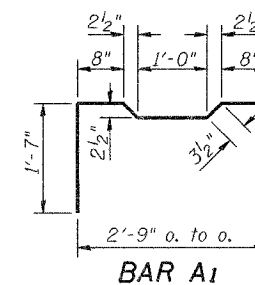
DETAIL A



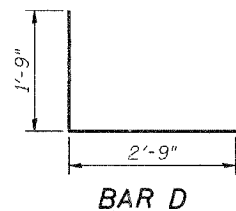
TYPICAL TRANSVERSE TIE ASSEMBLY



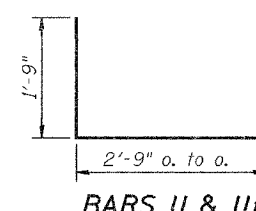
LIFTING LOOP DETAIL



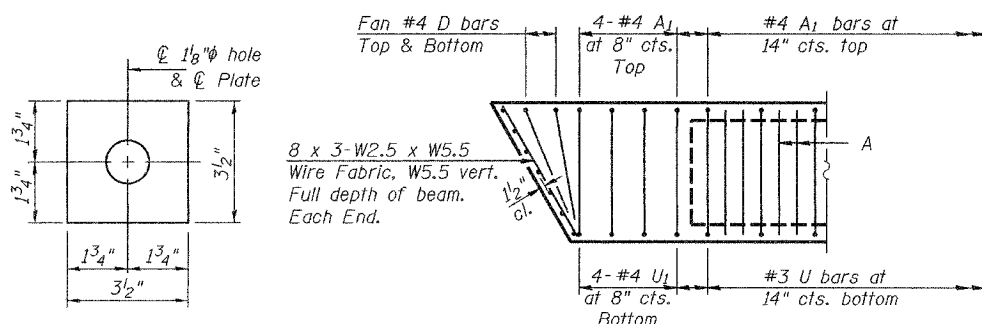
BAR A1



BAR D



BARS U & U1



END PLAN

PLATE A
(6 Required)

DESIGNED	S.J.B.
CHECKED	A.T.H.
DRAWN	Drew Christopher
CHECKED	S.J.B. A.T.H.

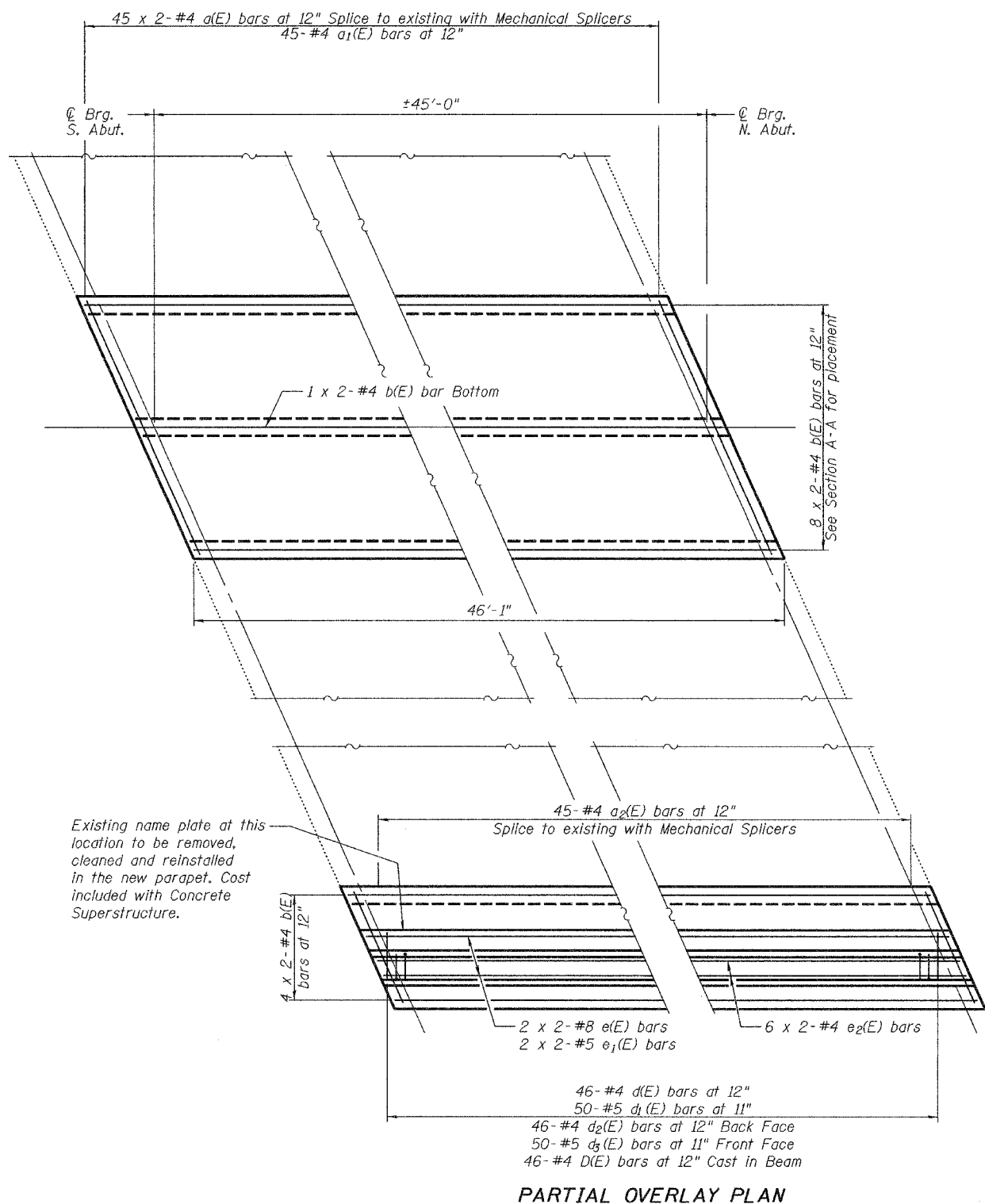
September 17, 2007
EXAMINED *Carl Hayes*
ENGINEER OF STRUCTURAL SERVICES
PASSED *Ralph E. Anderson*
ENGINEER OF BRIDGES AND STRUCTURES

PD-5-R 11-1-06

STATE OF ILLINOIS
DEPARTMENT OF TRANSPORTATION

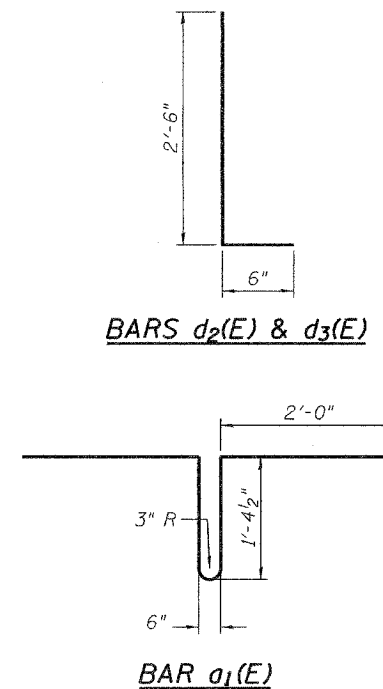
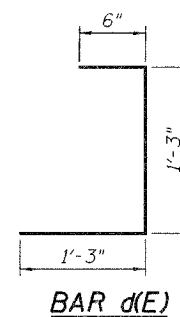
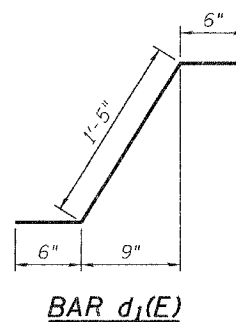
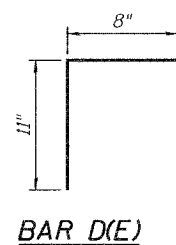
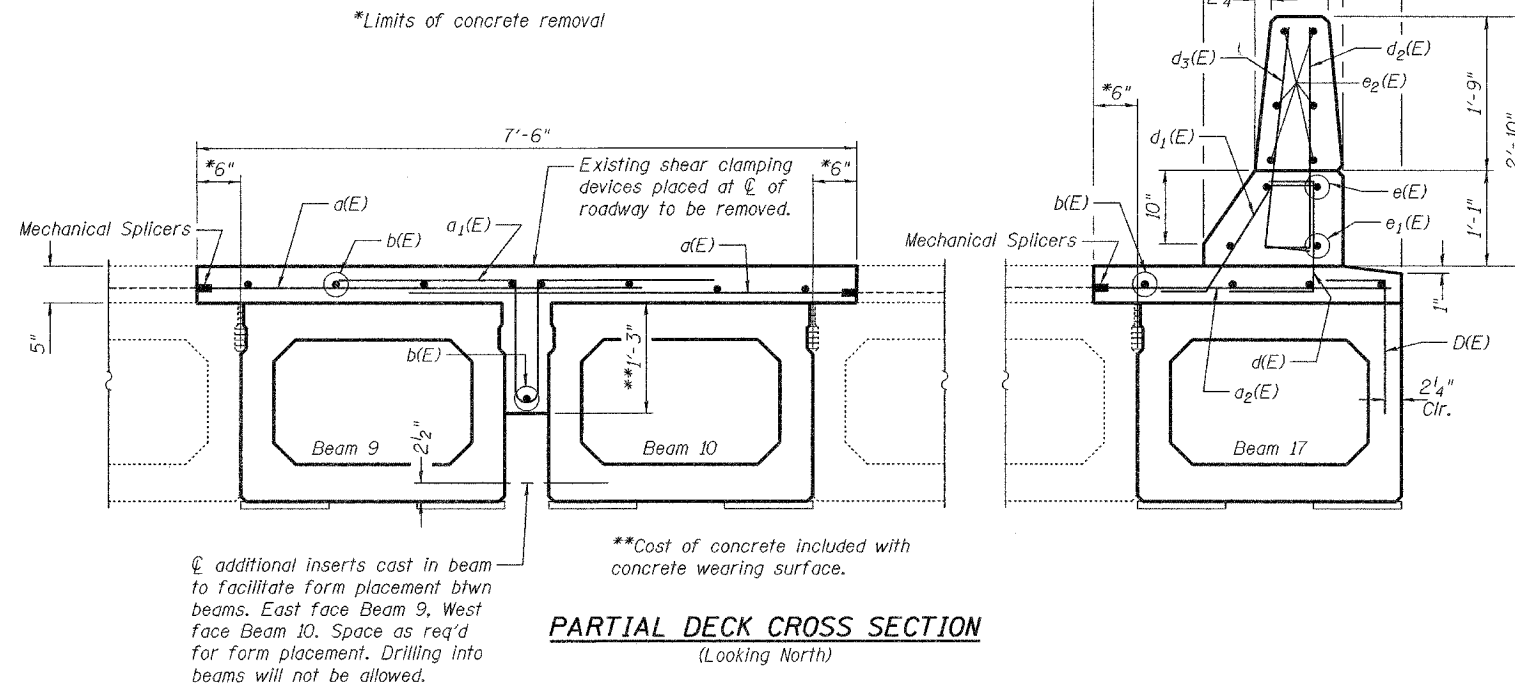
ROUTE NO.	SECTION	COUNTY	POST MILE	SHEET NO.
		Cook	11	8
FED. ROAD DIST. NO. 7		ILLINOIS	FED. AID PROJECT	
Contract Number: 60D24				

SHEET NO. 3
3 SHEETS



PARTIAL OVERLAY PLAN

Notes:
Removal cost of concrete wearing surface over PPC Deck Beams is included with removal of existing deck beams.
The cost of removing the existing shear clamping devices shall be included with removal of existing deck beams.



BILL OF MATERIAL

Bar	No.	Size	Length	Shape
a(E)	90	#4	5'-0"	—
a ₁ (E)	45	#4	7'-7"	—
a ₂ (E)	45	#4	3'-6"	—
b(E)	26	#4	24'-4"	—
d(E)	46	#4	3'-0"	—
d ₁ (E)	50	#5	2'-5"	—
d ₂ (E)	46	#4	3'-0"	—
d ₃ (E)	50	#5	3'-0"	—
e(E)	4	#8	25'-3"	—
e ₁ (E)	4	#5	24'-1"	—
e ₂ (E)	12	#4	23'-10"	—
Mechanical Splice	Each		135	
Concrete Superstructure	Cu. Yd.		5.0	
Concrete Wearing Surface, 5"	Sq. Yd.		56.3	
Reinforcement Bars, Epoxy Coated	Lbs.		2,080	
Concrete Removal	Cu. Yd.		6.1	

Bars indicated thus 1 x 2-#5 etc. indicates 1 line of bars with 2 lengths per line.

OVERLAY DETAILS
F.A.U. RT. 3597
COOK COUNTY
SN 016-0771

DESIGNED	S.J.B.
CHECKED	A.T.H.
DRAWN	Drew Christopher
CHECKED	S.J.B. A.T.H.

EXAMINED	September 17, 2007
PASSED	September 17, 2007

Min Bar Laps

- #4 = 1'-8"
- #5 = 2'-2"
- #8 = 4'-6"

F.A.I.D. RTE.	SECTION	COUNTY	TOTAL SHEETS	SHEET NO.
3597	07101-1	COOK	11	9
STA.		TO STA.		
FED. ROAD DIST. NO.		ILLINOIS FED. AID PROJECT		

DETOUR M4-8(O) 3015



M5-1R (O) 3018



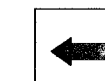
M6-3 (O) 3018



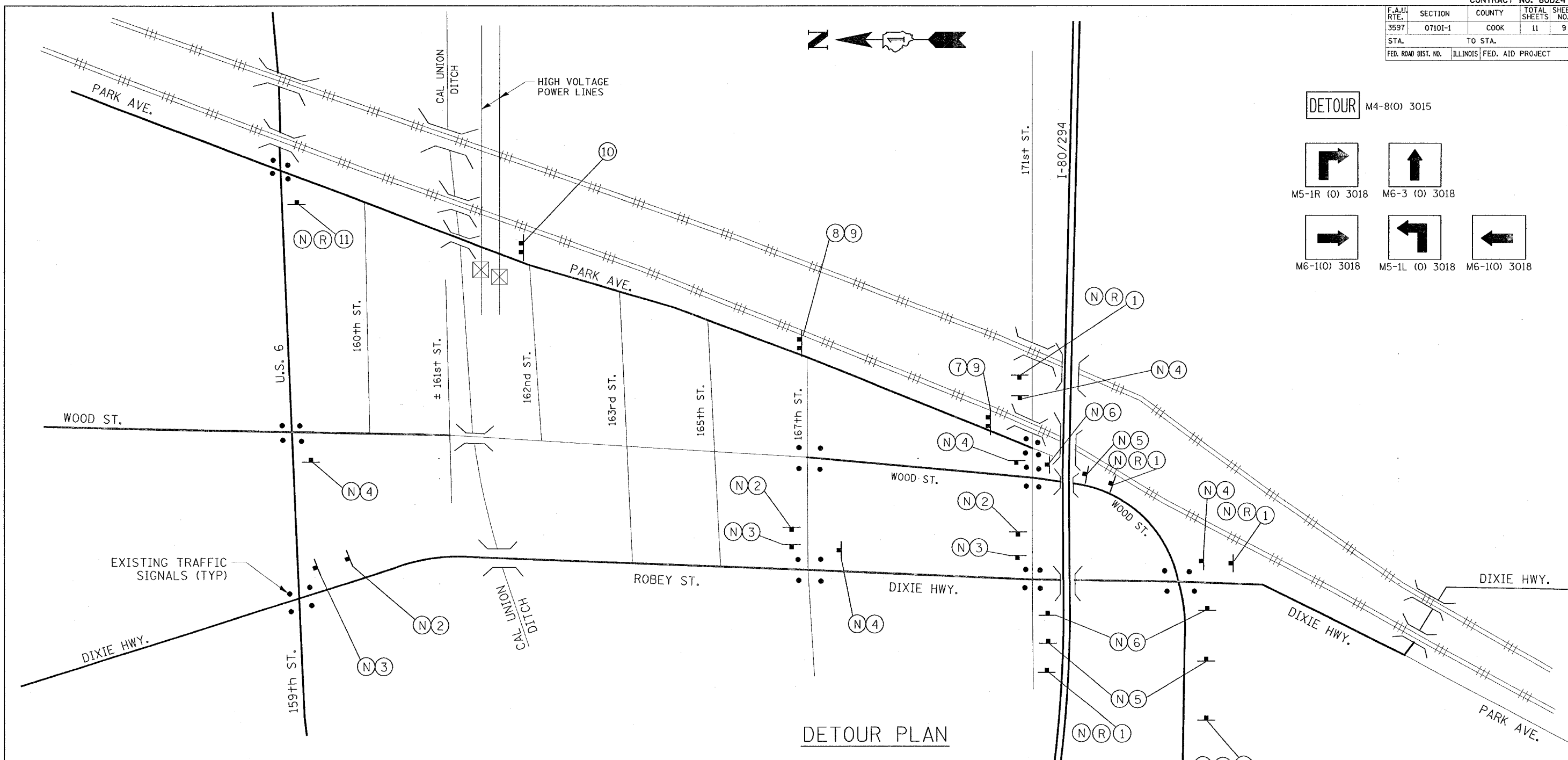
M6-1(O) 3018



M5-1L (O) 3018



M6-1(O) 3018



DETOUR PLAN

(R) PARK AVE	DETOUR	DETOUR	DETOUR	DETOUR	DETOUR	(7) ROAD CLOSED 1 MILE AHEAD LOCAL TRAFFIC ONLY R11-3 6030	(10) ROAD CLOSED R11-2 4830
(N) NORTH M3-1 2412	(R) [Right Turn]	(R) [Right Arrow]	(R) [Up Arrow]	(R) [Left Turn]	(R) [Left Arrow]	(8) ROAD CLOSED TO THRU TRAFFIC R11-4 6030	(11) END DETOUR M4-8a
(1) DETOUR AHEAD W20-2(O) 48	(2) [Right Turn]	(3) [Right Arrow]	(4) [Up Arrow]	(5) [Left Turn]	(6) [Left Arrow]	(9) [Left Arrow] M4-1L(O) 4818	

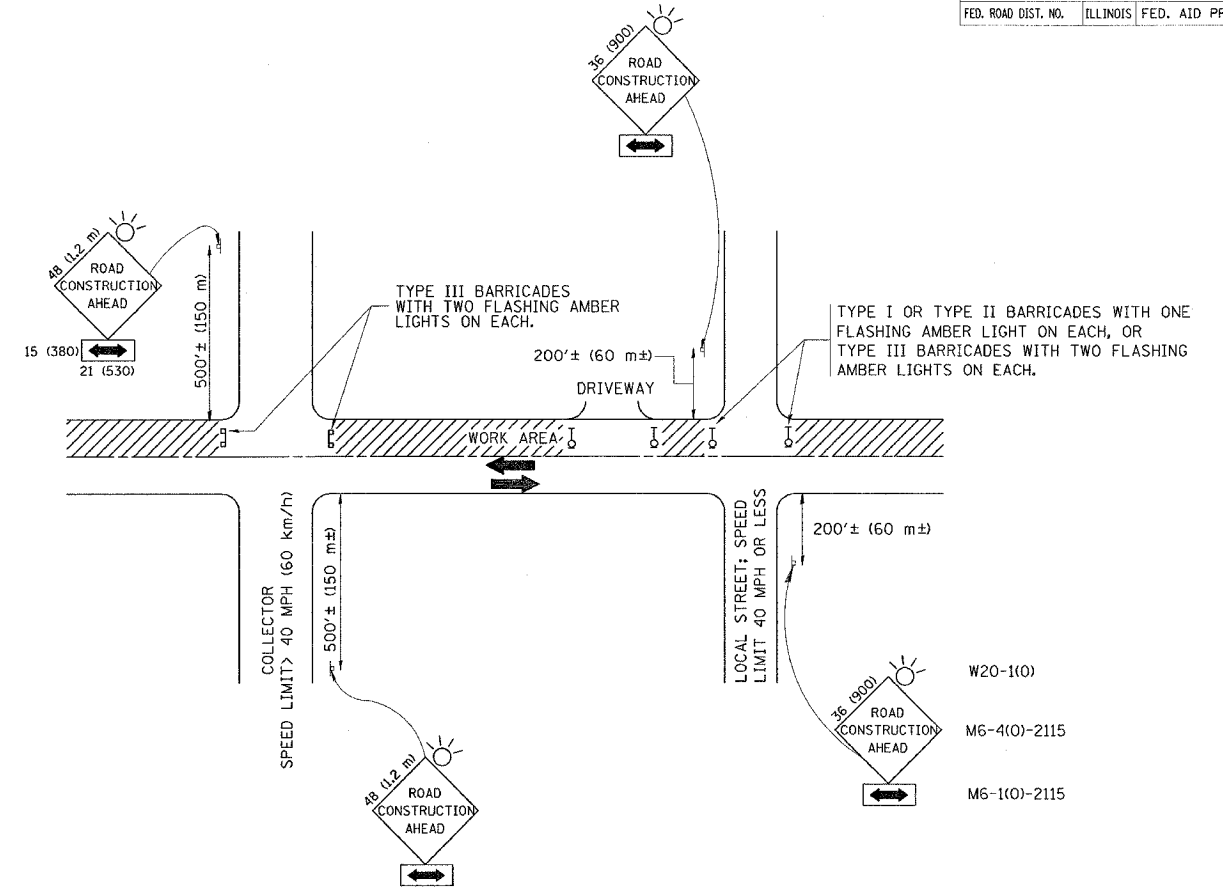
SIGN
 TYPE III BARRICADES (2 OR MORE) W/ STEADY BURN LIGHTS;
 SIGNS (7), (8), (9) & (10) TO BE MOUNTED ABOVE TYPE III BARRICADE

REVISIONS	
NAME	DATE

ILLINOIS DEPARTMENT OF TRANSPORTATION
**PROPOSED DETOUR PLAN
 PARK AVE.**
 SCALE: VERT. NONE
 HORIZ. DATE 9/17/2007
 DRAWN BY
 CHECKED BY

PLOT DATE = 9/17/2007
 PLOT SCALE = 50/800'S / IN.
 USER NAME = mitchellr

F.A. RTE.	SECTION	COUNTY	TOTAL SHEETS	SHEET NO.
3597	0710I-1	COOK	11	10
STA.		TO STA.		
FED. ROAD DIST. NO.	ILLINOIS	FED. AID PROJECT		



TRAFFIC CONTROL AND PROTECTION FOR SIDE ROADS, INTERSECTIONS, AND DRIVEWAYS

NOTES:

- A. FOR NO LANE RESTRICTION ON THE SIDE ROAD OR DRIVEWAYS
 1. SIDE ROAD WITH A SPEED LIMIT OF 40 MPH (60 km/h) OR LESS AS SHOWN ON THE DRAWING AND AS DIRECTED BY THE ENGINEER:
 - a) ONE ROAD CONSTRUCTION AHEAD SIGN 36 x 36 (900x900) WITH A FLASHER AND FLAG MOUNTED ON IT APPROXIMATELY 200' (60 m) IN ADVANCE OF THE MAIN ROUTE.
 - b) THE CLOSED PORTION OF THE MAIN ROUTE SHALL BE PROTECTED BY BLOCKING WITH TYPE I, TYPE II OR TYPE III BARRICADES, 1/3 OF THE CROSS SECTION OF THE CLOSED PORTION.
 2. SIDE ROAD WITH A SPEED LIMIT GREATER THAN 40 MPH (60 km/h) AS SHOWN ON THE DRAWING AND AS DIRECTED BY THE ENGINEER:
 - a) ONE ROAD CONSTRUCTION AHEAD SIGN 48 x 48 (1.2 m x 1.2 m) WITH A FLASHER MOUNTED ON IT APPROXIMATELY 500' (150 m) IN ADVANCE OF THE MAIN ROUTE.
 - b) THE CLOSED PORTION OF THE MAIN ROUTE SHALL BE PROTECTED BY BLOCKING WITH TYPE III BARRICADES, 1/2 OF THE CROSS SECTION OF THE CLOSED PORTION.
 3. WHEN THE SIDE ROAD LIES BETWEEN THE BEGINNING OF THE MAINLINE SIGNING AND THE WORK ZONE, A SINGLE HEADED ARROW (M6-1) SHALL BE USED IN LIEU OF THE DOUBLE HEADED ARROW (M6-4).
- B. FOR A LANE CLOSURE ON A SIDE ROAD OR DRIVEWAY:
 - USE APPLICABLE PORTIONS OF THE TYPICAL APPLICATION OF TRAFFIC CONTROL DEVICES (STD. 701501, STD. 701606 OR THE APPROPRIATE STANDARD). THE SPACING OF SIGNS AND BARRICADES SHALL BE ADJUSTED FOR FIELD CONDITIONS AS DIRECTED BY THE ENGINEER. THE DIRECTIONAL ARROW SHALL BE COVERED OR REMOVED WHEN NO LONGER CONSISTENT WITH THE SIDE ROAD LANE CLOSURE.
- C. ADVANCE WARNING SIGNS ARE TO BE OMITTED ON DRIVEWAY UNLESS OTHERWISE NOTED.
- D. THE TRAFFIC CONTROL AND PROTECTION FOR SIDE ROADS, INTERSECTIONS, AND DRIVEWAYS SHALL BE INCIDENTAL TO THE COST OF SPECIFIED TRAFFIC CONTROL STANDARDS OR ITEMS.

All dimensions are in millimeters (inches) unless otherwise shown.

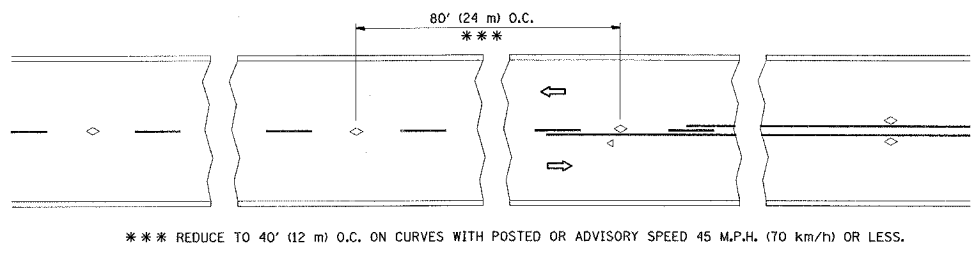
REVISIONS	
NAME	DATE
LHA	6/89
T. RAMMACHER	09/08/94
J. OBERLE	10/18/95
A. HOUSEH	03/06/96
A. HOUSEH	10/15/96
T. RAMMACHER	01/06/00

ILLINOIS DEPARTMENT OF TRANSPORTATION
 TRAFFIC CONTROL AND PROTECTION
 FOR
 SIDE ROADS, INTERSECTIONS, AND
 DRIVEWAYS

SCALE: NONE
 DRAWN BY
 CHECKED BY

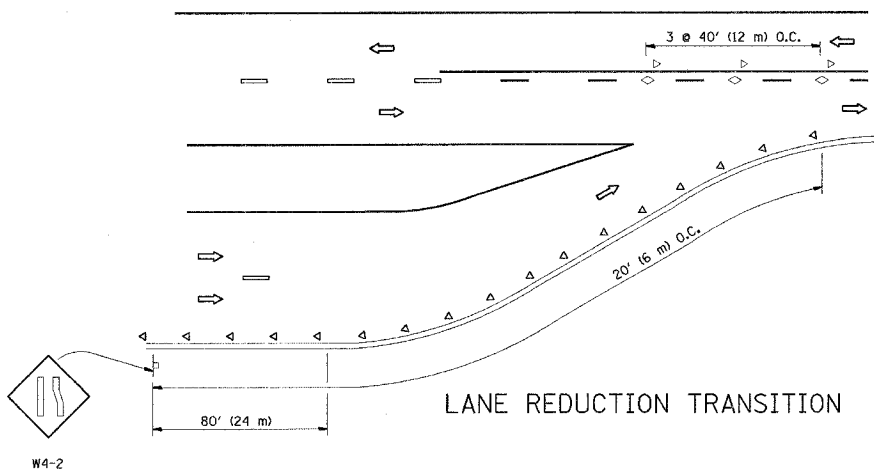
PLOT DATE = 9/12/2007
 FILE NAME = m:\projects\101101.dgn
 PLOT SCALE = 80.0000 / IN.
 USER NAME = mtche11r

CONTRACT NO.				
F.A. RTE.	SECTION	COUNTY	TOTAL SHEETS	SHEET NO.
3597	0710I-1	Cook	11	11
STA.		TO STA.		
FED. ROAD DIST. NO.	ILLINOIS FED. AID PROJECT			

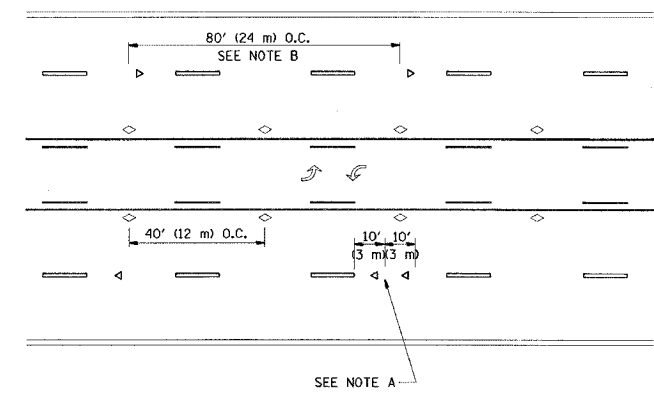


*** REDUCE TO 40' (12 m) O.C. ON CURVES WITH POSTED OR ADVISORY SPEED 45 M.P.H. (70 km/h) OR LESS.

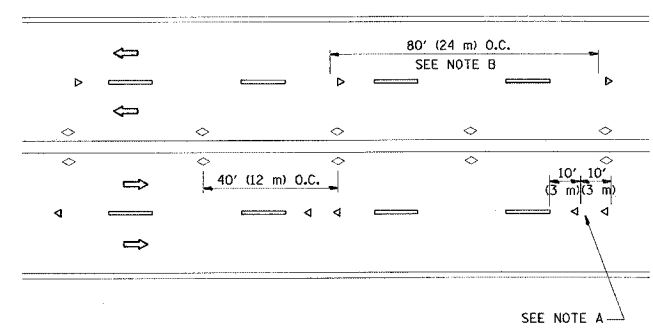
TWO-LANE/TWO-WAY



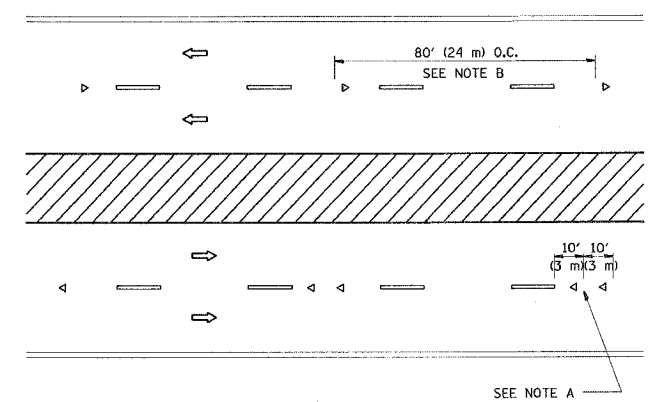
LANE REDUCTION TRANSITION



TWO-WAY LEFT TURN



MULTI-LANE/UNDIVIDED



MULTI-LANE/DIVIDED

GENERAL NOTES

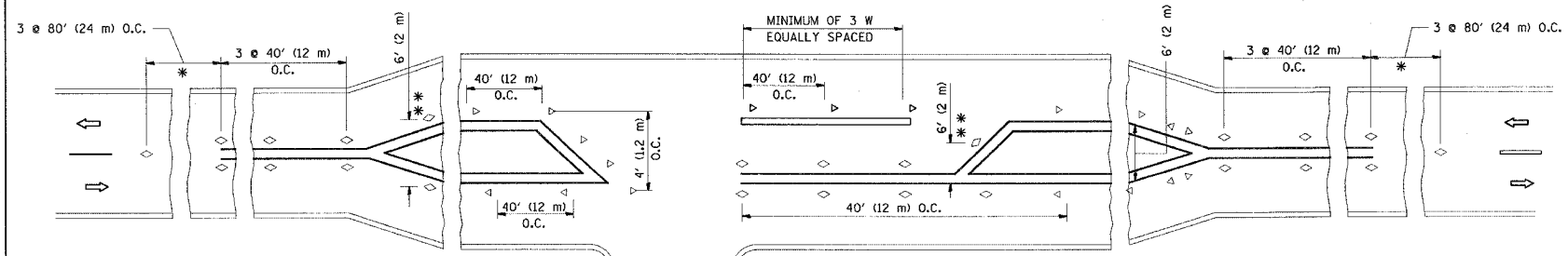
1. MARKERS USED WITH DASHED LINES SHALL BE CENTERED IN THE GAP BETWEEN SEGMENTS.
2. MARKERS USED ADJACENT TO SOLID LINES SHALL BE OFFSET 2 TO 3 (50 TO 75) TOWARD TRAFFIC AS SHOWN.
3. MARKERS THROUGH TANGENTS LESS THAN 500' (150 m) IN LENGTH BETWEEN CURVES SHALL BE INSTALLED AT THE LESSER OF THE TWO CURVE SPACINGS.

SYMBOLS

- YELLOW STRIPE
- WHITE STRIPE
- ◁ ONE-WAY AMBER MARKER
- ◁ ONE-WAY CRYSTAL MARKER (W/O)
- ◊ TWO-WAY AMBER MARKER

LANE MARKER NOTES

- B. REDUCE TO 40' (12 m) O.C. ON CURVES WHERE ADVISORY SPEEDS ARE 10 M.P.H (20 km/h) LOWER THAN POSTED SPEEDS.
- A. USE DOUBLE LANE LINE MARKERS SPACED AS SHOWN.



LEFT TURN

All dimensions are in inches (millimeters) unless otherwise shown.

REVISIONS	
NAME	DATE
T. RAMMACHER	09-19-94
T. RAMMACHER	03-12-99
T. RAMMACHER	01-06-00

ILLINOIS DEPARTMENT OF TRANSPORTATION
TYPICAL APPLICATIONS
RAISED REFLECTIVE PAVEMENT
MARKERS (SNOW-PLOW RESISTANT)

SCALE: NONE

DRAWN BY CADD
CHECKED BY
TC-11

PLOT DATE = 9/12/2007
FILE NAME = P:\2007\acell\cadd
PLOT SCALE = 1/8" = 1'-0" / IN.
USER NAME = mitchellr