

F.A.P. RTE.	SECTION	COUNTY	TOTAL SHEETS	SHEET NO.
370	01031-2	COOK	27	1

STATE OF ILLINOIS
DEPARTMENT OF TRANSPORTATION
DIVISION OF HIGHWAYS

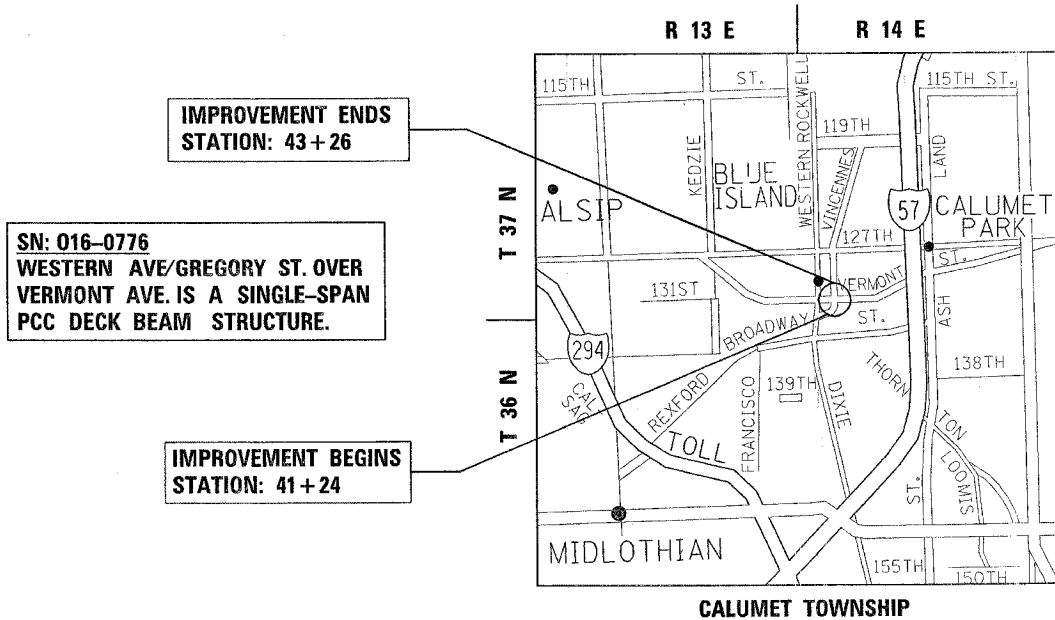
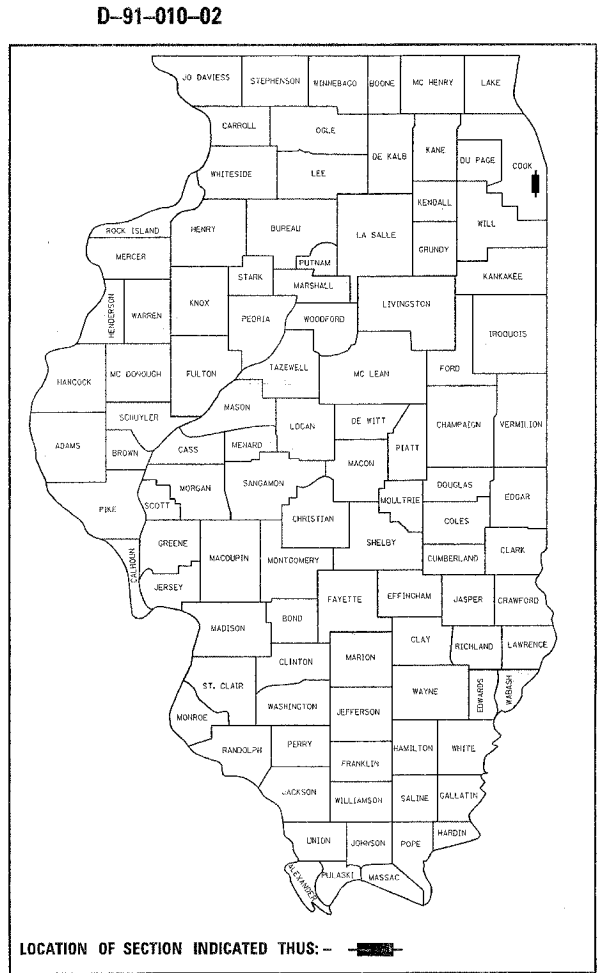
**PROPOSED
HIGHWAY PLANS**

**F.A.P. 370: WESTERN AVE./GREGORY ST.
OVER VERMONT AVE.
SECTION: 0103 I-2
BRIDGE BEAM REPLACEMENT & NEW DECK
COOK COUNTY
C-91-010-02**

FOR INDEX OF SHEETS, SEE SHEET NO. 2

IMPROVEMENT LOCATED IN
THE CITY OF BLUE ISLAND

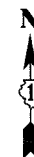
DISTRICT ONE - DESIGN / PLAN PREPARATION ENGINEER KEN ENG / LONG TRAN (847) 705-4240



IMPROVEMENT ENDS
STATION: 43+26

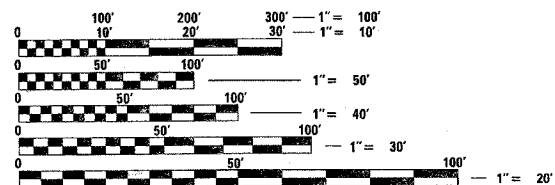
SN: 016-0776
WESTERN AVE/GREGORY ST. OVER
VERMONT AVE. IS A SINGLE-SPAN
PCC DECK BEAM STRUCTURE.

IMPROVEMENT BEGINS
STATION: 41+24



TRAFFIC DATA

2006 ADT = 10,900
SPEED = 25 MPH



FULL SIZE PLANS HAVE BEEN PREPARED USING STANDARD
ENGINEERING SCALES. REDUCED SIZED PLANS WILL NOT
CONFORM TO STANDARD SCALES. IN MAKING MEASUREMENTS
ON REDUCED PLANS, THE ABOVE SCALES MAY BE USED.

J.U.L.I.E.
JOINT UTILITY LOCATION INFORMATION FOR EXCAVATION
1-800-892-0123

GROSS AND NET LENGTH OF IMPROVEMENT = 202 FEET (0.04 MILE)

STATE OF ILLINOIS
DEPARTMENT OF TRANSPORTATION
DIVISION OF HIGHWAYS

SUBMITTED August 27 20 07

Diane O'Keefe
DEPUTY DIRECTOR OF HIGHWAYS, REGION ENGINEER

October 12, 20 07

Eric E. Harrel
ENGINEER OF DESIGN AND ENVIRONMENT

October 12, 20 07

Milton R. Seo
DIRECTOR OF HIGHWAYS, CHIEF ENGINEER

**PRINTED BY THE AUTHORITY
OF THE STATE OF ILLINOIS**