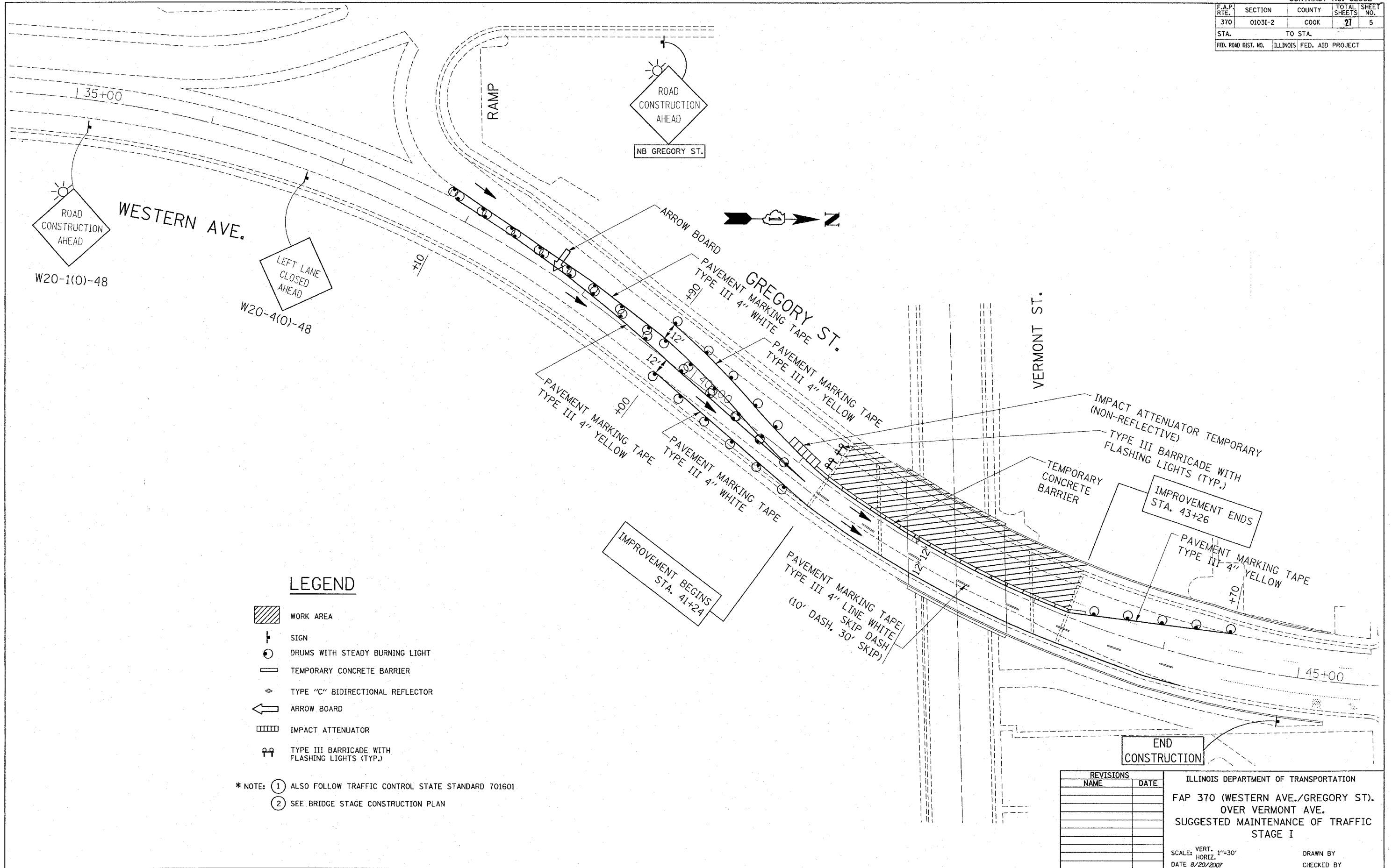



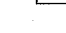


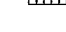
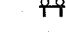


F.A.P. RTE.	SECTION	COUNTY	TOTAL SHEETS	SHEET NO.
370	01031-2	COOK	27	5
STA.		TO STA.		
FED. ROAD DIST. NO.		ILLINOIS FED. AID PROJECT		



LEGEND

-  WORK AREA
-  SIGN
-  DRUMS WITH STEADY BURNING LIGHT
-  TEMPORARY CONCRETE BARRIER
-  TYPE "C" BIDIRECTIONAL REFLECTOR
-  ARROW BOARD
-  IMPACT ATTENUATOR
-  TYPE III BARRICADE WITH FLASHING LIGHTS (TYP.)

* NOTE: ① ALSO FOLLOW TRAFFIC CONTROL STATE STANDARD 701601
 ② SEE BRIDGE STAGE CONSTRUCTION PLAN

REVISIONS		ILLINOIS DEPARTMENT OF TRANSPORTATION FAP 370 (WESTERN AVE./GREGORY ST.) OVER VERMONT AVE. SUGGESTED MAINTENANCE OF TRAFFIC STAGE I
NAME	DATE	

SCALE: VERT. 1"=30'
 HORIZ. 1"=30'
 DATE 8/20/2007

DRAWN BY
 CHECKED BY

PLOT DATE = 8/20/2007
 FILE NAME = g:\projects\1010182\ah_sogal.dgn
 USER NAME = drakeog
 USER NAME = drakeog