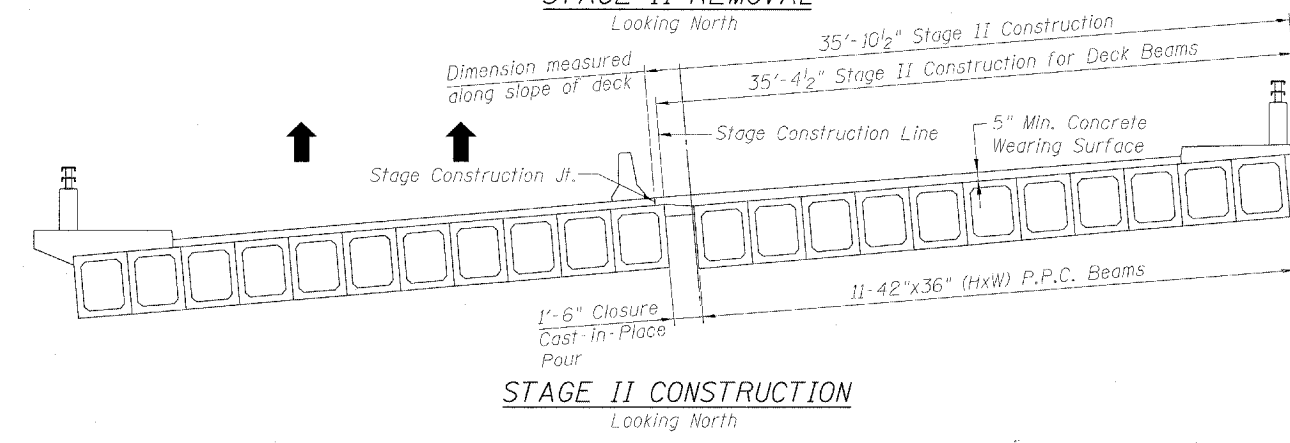
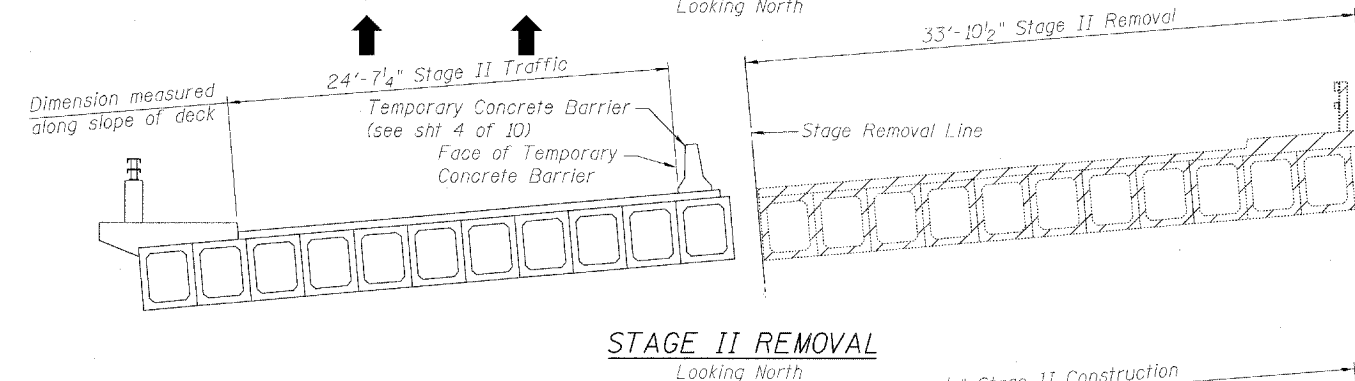
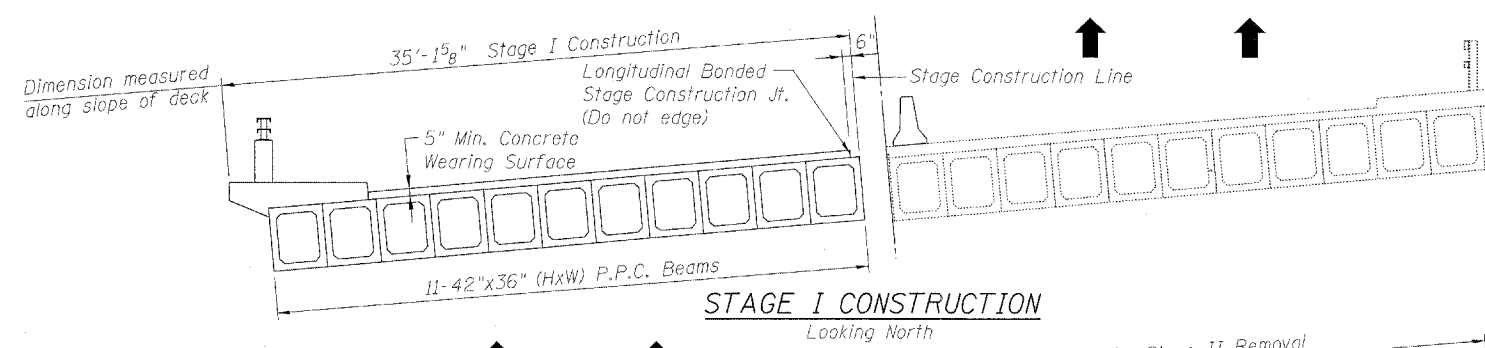
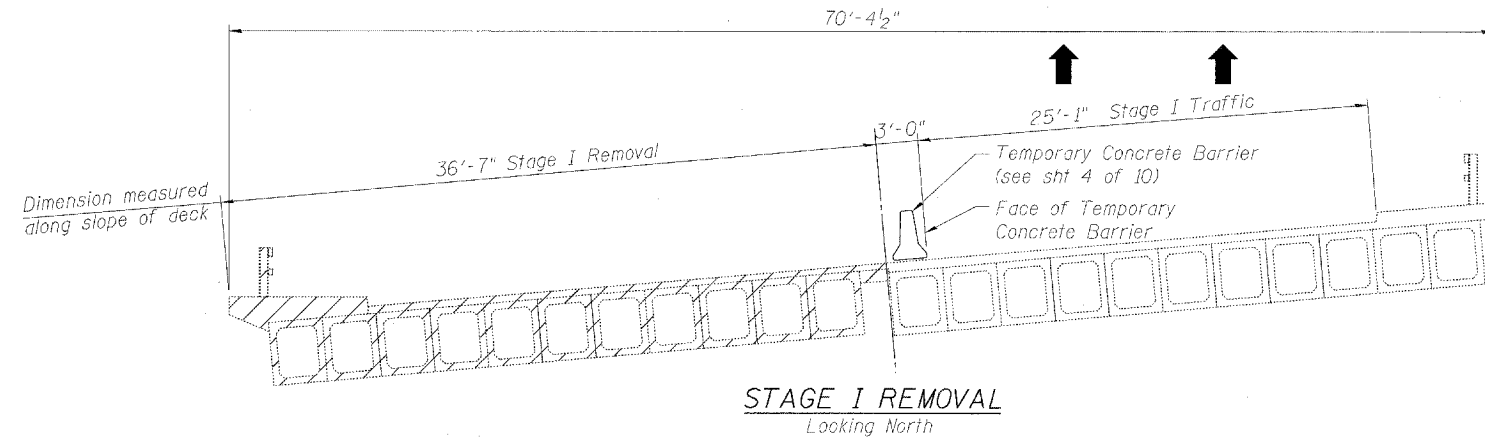


STATE OF ILLINOIS
DEPARTMENT OF TRANSPORTATION

ROUTE NO.	SECTION	COUNTY	TOTAL SHEETS	SHEET NO.	SHEET NO. 3
FAP 370	01031-2	COOK	27	11	10 SHEETS
FED. ROAD DIST. NO. 7	ILLINOIS	FED. AID PROJECT			

Contract # 62362



DESIGNED	JRS
CHECKED	AML
DRAWN	RBH
CHECKED	AML

STAGE CONSTRUCTION
GREGORY STREET
OVER VERMONT STREET
SECTION 01031-2
COOK COUNTY
STRUCTURE NO. 016-0776
STATION 42+37.22

GRAEF ANHALT SCHLOEMER
and Associates Inc.

GRAEF, ANHALT, SCHLOEMER & ASSOCIATES, INC.
CONSULTING ENGINEERS AND LAND SURVEYORS
8501 N. Higgins Road, Suite 280
Chicago, Illinois 60631
(773) 399-0112