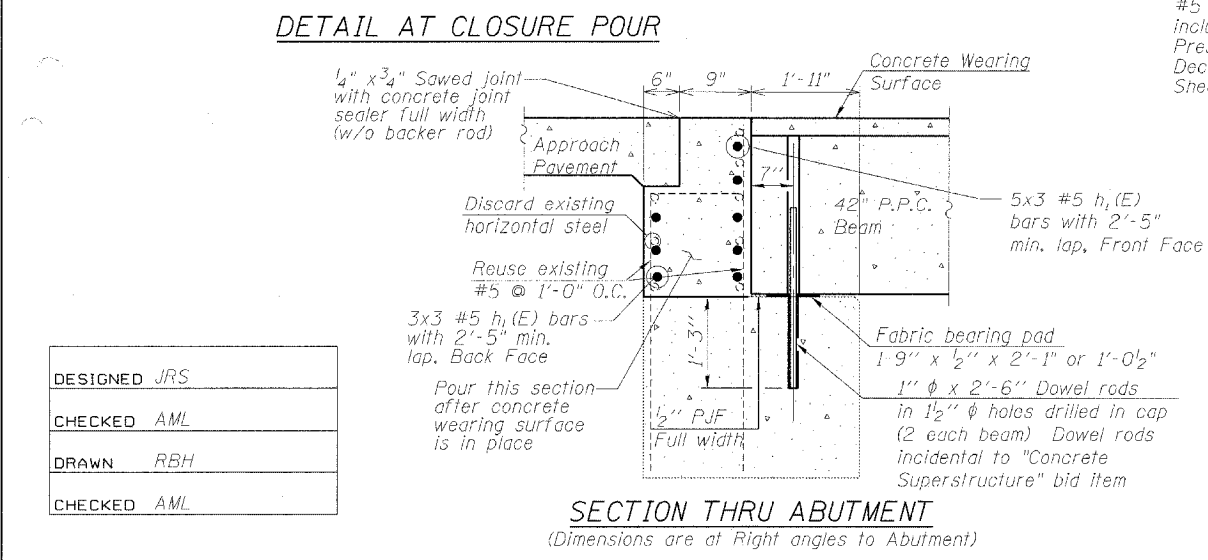
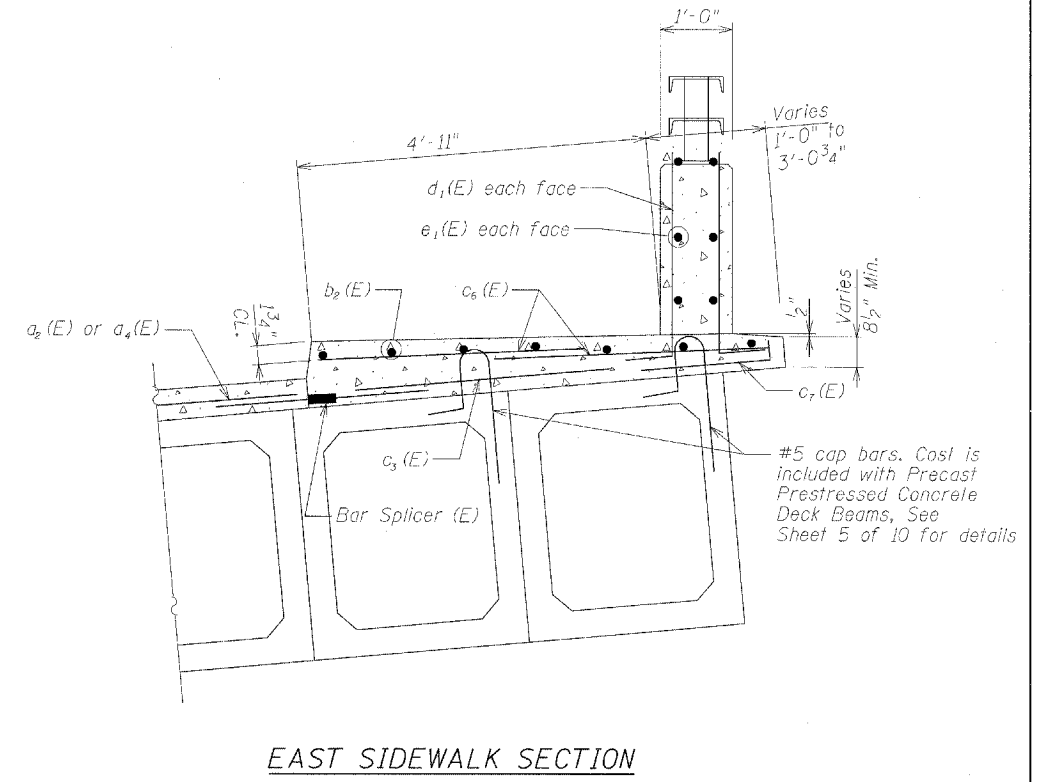
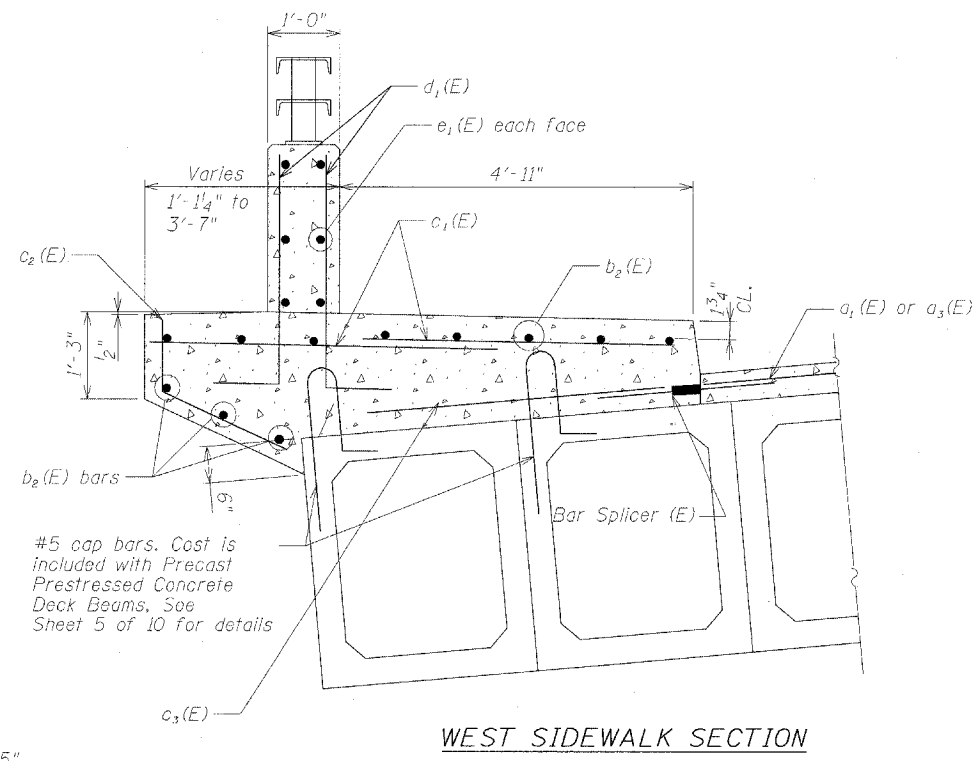
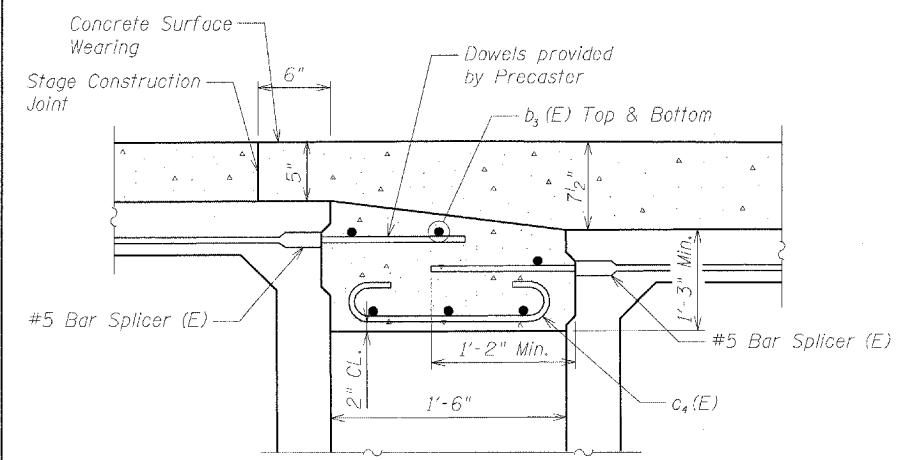
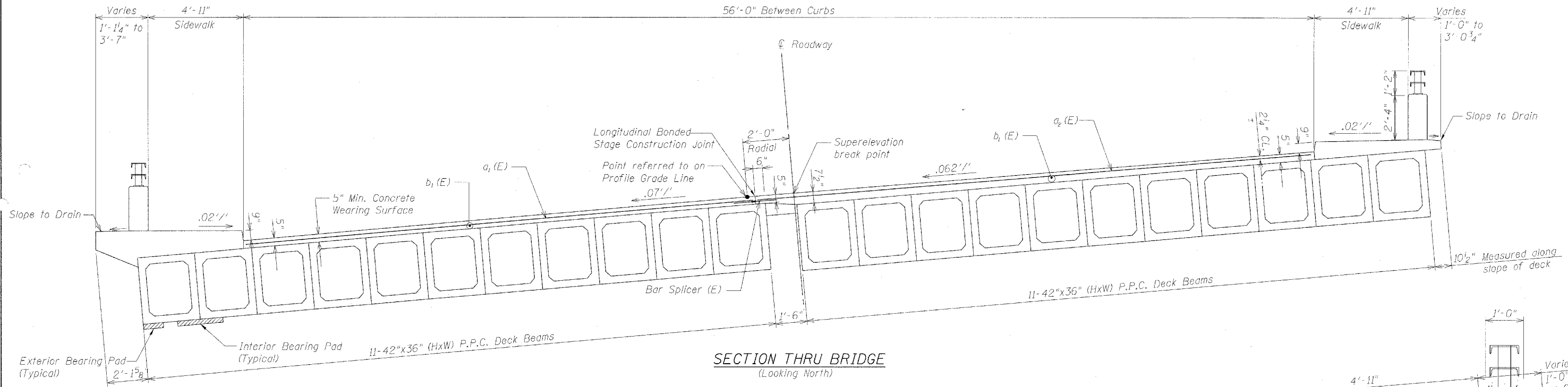


STATE OF ILLINOIS
DEPARTMENT OF TRANSPORTATION

ROUTE NO.	PROJECT	COUNTY	TOTAL SHEETS	SHEET NO.	SHEET NO. 6 10 SHEETS
FAP 370	01031-2	COOK	27	14	
FED. ROAD DIST. NO. 7	ILLINOIS	FED. AID PROJECT			

Contract # 62362



BILL OF MATERIAL

Bar	No.	Size	Length	Shape
$h_1(E)$	48	#5	28'-9"	
Concrete Superstructure			Cu. Yd.	29.2
Reinforcement Bars, Epoxy Coated			Pound	1440

Reinforcement Bars designated (E) shall be epoxy coated

Notes :

After beams have been erected, holes shall be drilled into substructure and anchor dowels placed. Dowel holes shall be filled with non-shrink grout to top of beam and allowed to cure min. 24 hrs. prior to grouting the shear keys.

All horizontal dimensions are at right angles to beam ends.

Preformed joint filler is incidental to "Precast Prestressed Concrete Deck Beams (42" Depth)" bid item.

See sheet 5 of 10 for bearing pad details.

SUPERSTRUCTURE DETAILS
SECTIONS AND JOINT DETAILS
GREGORY STREET
OVER VERMONT STREET
SECTION 01031-2
COOK COUNTY
STRUCTURE NO. 016-0776
STATION 42+37.22

GRAEF, ANHALT, SCHLOEMER & ASSOCIATES, INC.
CONSULTING ENGINEERS AND LAND SURVEYORS
8501 W. Higgins Road, Suite 280
Chicago, Illinois 60631
(773) 399-0112

GRAEF ANHALT SCHLOEMER and Associates Inc.

DESIGNED	JRS
CHECKED	AML
DRAWN	RBH
CHECKED	AML